



**Johnsonite®**

**HIGH-PERFORMANCE MODULAR RESILIENT TILE**

**HETEROGENEOUS**



**Square**

THE TARKETT COLLECTION

“Ninety percent of business decision-makers say improvements in design can increase productivity.”

*ASID research study:  
The Impact of Interior Design on the Bottom Line*

Studies show that high-quality design that integrates all interior elements can increase productivity by as much as 20 percent. The right flooring can make people more comfortable, control noise, reduce slips/falls, lower maintenance costs and downtime, and minimize change-rate costs. And, it can motivate and inspire through color, pattern, texture and design.

**INTRODUCING THE WORLD'S MOST INTEGRATED, HIGH-PERFORMANCE FLOORING SYSTEM.**

Now you can design floors that make perfect sense over the whole space, working with one trusted partner. Our system, which includes rubber, linoleum, homogeneous and heterogeneous vinyl, sports flooring, stair treads, finishing borders and transitions, is modeled after all good design paradigms, uniting function and aesthetics to help you create efficiencies that pay off for the end-user in real lifetime return. Every element is designed to work together functionally, aesthetically and logistically.

**THE SYSTEM MAKES YOUR LIFE EASIER.**

The Johnsonite system simplifies the design process by allowing you to deal with a single knowledgeable source – a Johnsonite consultant – to help you create high-performance spaces that work hard for end-users.



Creating high-performance environments.

# Square tile.

## A high-performance solution from Johnsonite®

Many organizations demand the ability to change space quickly. Until now, carpet tiles have been about the only option. Introducing Square, a high-performance resilient tile that uses releasable adhesive and can be repurposed as easily as carpet tiles. When paired with rePLACE®, the leading demountable wall base, you get a truly modular flooring system. So you can change out a room in hours, not days. And, you get real, measurable return any CFO can appreciate.

Square's extremely durable PUR-reinforced wear layer contributes to its long life and its ability to better resist abrasions, stains and tearing.

Best of all, Square is a modular flooring that requires less subfloor preparation, is easy to install and easy to clean. By eliminating the need for labor-intensive cleaning procedures throughout its lifetime, a savings of 30 percent in maintenance costs can be expected.

### Modular and interchangeable

- tiles can be replaced whenever necessary
- more flexibility and less downtime
- easy access to subfloors
- pair with rePLACE demountable wall base for a complete modular flooring system

### Low maintenance means enhanced ROI

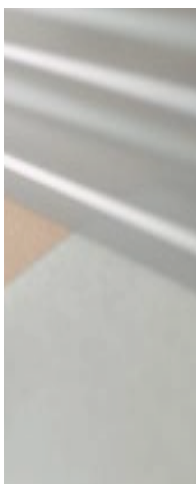
- PUR-reinforced wear layer means less cleaning and maintenance
- good resistance to static indentation, abrasion, scuffing and tearing
- reduced life-cycle cost

### Low environmental impact

- low maintenance reduces the need for water and chemicals
- longer life means fewer resources to reproduce, transport and install
- ISO 14001 Environmental Management System
- FloorScore certified

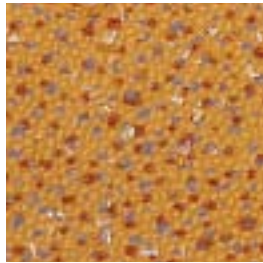
### Elements for a motivating space

- five complementary designs create warm, welcoming office interiors
- coordinating wall base, transitions and other accessories
- high-density backing for comfort underfoot and improved acoustical properties
- Sanitized® treatment for anti-bacterial properties
- built-in anti-migration barrier



# Square Malaga

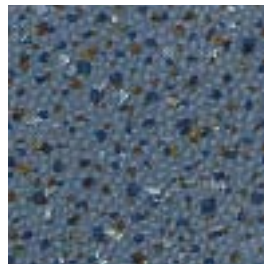
Malaga's five designs include those with warmer colors and a touch of copper and gold; and the colder grey colors with iron effects, ideal in more urban space designs.



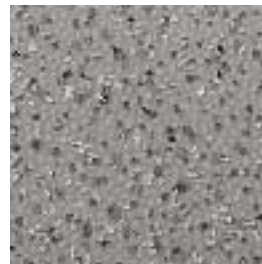
**2005 Carnival  
Tile**



**3001 Cobblestone WG  
Tile**



**2002 Holiday  
Tile**



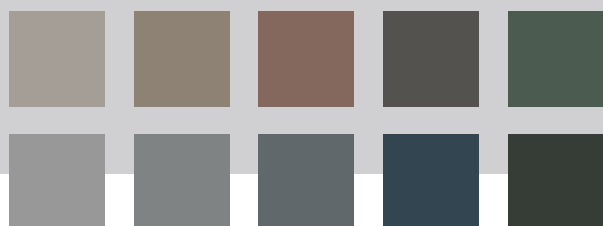
**3002 City Street CG  
Tile**



**3003 Concrete Confetti CG  
Tile**

## COORDINATING JOHNSONITE COLORS

The Johnsonite system of flooring and accessory items coordinates color as well as design elements. The rich, natural colors of Malaga can accent the soft colors and patterns of Palma. Finishing borders and accessories in more than 140 colors can tie the whole design together. And we guarantee you'll always have neutrals that coordinate across our entire system with Color Foundations, six neutral palettes that coordinate across product lines.





**9011 Pecan Sundae WB Tile**



**9014 Paisley Stone CB Tile**



**9013 Praline Scone WB Tile**



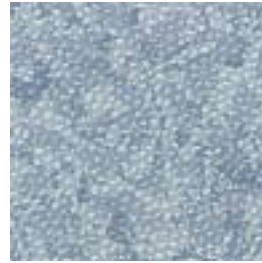
**9008 Metal Bucket CG Tile**



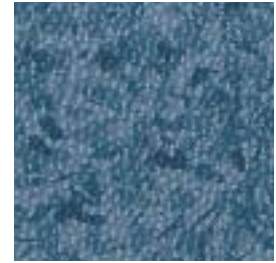
**9009 Howling Wolf CG Tile**



**9010 Pewter Mug CG Tile**



**9015 Norwegian Sky Tile**



**9016 Shallow Water Tile**



**9017 Foliage Tile**

## Square Palma

The nine designs in the Palma collection include soothing patterns and softer color shades to create a simple, open and airy atmosphere in any high-traffic area.



# Square Patine

The four designs in the Patine collection combine earthy colors with the look of slightly worn leather to create a warm, dynamic environment.



**9004** Leather Strap  
Tile



**9002** Grey Tuxedo **WG**  
Tile



**9006** Ottoman Blue  
Tile



**9005** Cocktail Hour  
Tile

# Square Silk

The two designs in the Silk collection feature aluminum-like colors and unique 3D pattern images, creating a powerful effect in any contemporary space design.



**9024** Dry Brush  
Tile



**9023** Grey Beach **CG**  
Tile



0002 Oak  
Tile



0001 Teak  
Tile



## Square Wood

The two rich, saturated colors and beautiful textures of the Wood collection combine to create the look of real wood flooring, without the expense.

## Square and rePLACE®

Now change happens. Faster.

rePLACE is the world's leading demountable base product. With rePLACE, you can change rooms faster, repair high-abuse areas quickly, reduce downtime and protect the environment. All while increasing your return on investment.

rePLACE doesn't use any type of adhesive for application. You simply slide it onto a track that can be installed before or after the flooring. When a section of the base — or the entire room — needs to be changed out for maintenance or redecorating, the base is removed from the track and recycled or reused in another room. It's that easy.

When paired with Square, an entire room can be changed out quickly and with minimum downtime.





# Square | The Tarkett Collection

## DESCRIPTION

Modular resilient tile on glass fiber non-woven. Clear wear layer. High-density foam backing with anti-migration barrier. Polyurethane reinforcement for easy maintenance. Sanitized®, bacteriostatic and fungistatic built-in treatment.

Technical Data	Standards	Square
Type of Floor Covering	Commercial	Heterogeneous Modular Tile
Total Thickness	EN 428	.188" (4.70 mm)
Wear Layer Thickness	EN 429	.032" (0.80 mm)
Total weight/m <sup>2</sup> /sq yd	EN 430	5.46 kg/9.97 lbs
Abrasion Group	EN 660-1	Group T : ≤ 0.08 mm
Residual Indentation	ASTM F-970	350 psi
Wear by Furniture Legs	EN 424	No damage
Dimensional Stability	EN 434	≤ 0.10%
Curl Resultant to Heat	EN 434	≤ 2 mm
Reaction to Fire	ASTM E-662 ASTM E-648	Pending Class 1
Slip Resistance	ASTM D-2047	< 0.6 COF
Electrostatic Properties		
Static Electrical Charge	EN 1815	< 2 kV
Electrical Resistance	EN 1081	R1 > 10 <sup>10</sup> Ω
Grading	IEC 1340-4-1	ASF Class 2
Impact Sound Reduction	EN ISO 140-8 EN ISO 717/2	ΔL <sub>w</sub> = 14 dB
Acoustic Improvement	NF S 31-074	L <sub>n,e,w</sub> = 66 dB
Light Fastness	EN ISO 105-B02	≥ Level 6
Chemical Resistance	EN 423	High resistance
Thermal Resistance	EN 12524	0.05 m <sup>2</sup> K/W
Underfloor Heating		Suitable up to 90° F
Colors		22
Form of Delivery	EN 427	Tiles: 50 x 50 cm (19.68" x 19.68" nominal) 16 tiles per ctn (43.06 sq ft)
Weight		48 lbs per ctn (21.80 kg)

Please visit [johnsonite.com](http://johnsonite.com) for the most updated specifications, and installation, cleaning and maintenance instructions.

### How to Order:

Square Malaga: SQMA-T-(XXXX) Color Number  
 Square Palma: SQPL-T-(XXXX) Color Number  
 Square Patine: SQPT-T-(XXXX) Color Number  
 Square Silk: SQSI-T-(XXXX) Color Number  
 Square Wood: SQWO-T-(XXXX) Color Number

*The Johnsonite system includes several accessories, including transitions, finishing borders, wall base, cove fillers and caps to complete your flooring design and installation. The Johnsonite system simplifies the design process by allowing you to deal with a single knowledgeable source – a Johnsonite consultant – to help you create high-performance spaces that work hard for end-users.*

**Johnsonite**  
**A Tarkett Company**  
 16910 Munn Road  
 Chagrin Falls, OH 44023  
 800-899-8916 or 440-543-8916

**Johnsonite®**