


HIGH-PERFORMANCE ELECTROSTATIC FLOORING

Johnsonite®

HOMOGENEOUS

**Toro EL
Granit AS**

THE TARKETT COLLECTION



“Ninety percent of business decision-makers say improvements in design can increase productivity.”

*ASID research study:
The Impact of Interior Design on the Bottom Line*

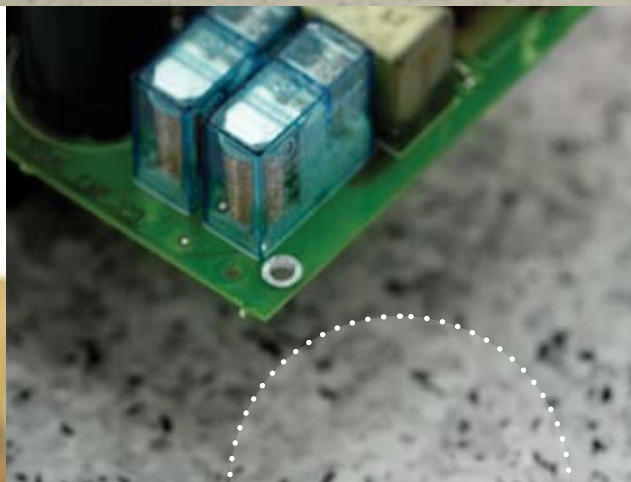
Studies show that high-quality design that integrates all interior elements can increase productivity by as much as 20 percent. The right flooring can make people more comfortable, control noise, reduce slips/falls, lower maintenance costs and downtime, and minimize change-rate costs. And it can motivate and inspire through color, pattern, texture and design.

INTRODUCING THE WORLD’S MOST INTEGRATED, HIGH-PERFORMANCE FLOORING SYSTEM.

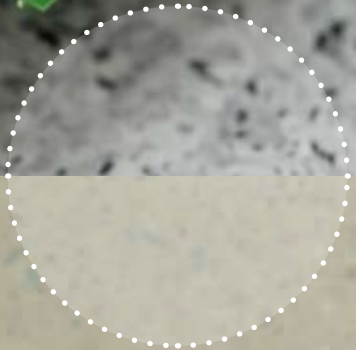
Now you can design floors that make perfect sense over the whole space, working with one trusted partner. Our system, which includes rubber, linoleum, homogeneous and heterogeneous vinyl, sports flooring, stair treads, finishing borders and transitions, is modeled after all good design paradigms, uniting function and aesthetics to help you create efficiencies that pay off for the end-user in real lifetime return. Every element is designed to work together functionally, aesthetically and logistically.

THE SYSTEM MAKES YOUR LIFE EASIER.

The Johnsonite system simplifies the design process by allowing you to deal with a single knowledgeable source – a Johnsonite consultant – to help you create high-performance spaces that work hard for end-users.



Creating high-performance environments.



Toro EL and Granit AS.

High performance when it's needed most.



It could be a busy operating room in a major hospital. A telecommunications center for a global corporation. Or anywhere electronic devices are produced, repaired, stored or used. The discharge of static electricity can be a concern because of the potential for major equipment damage. One way to help reduce this occurrence is to choose either Toro EL or Granit AS – both designed to help reduce damaging static discharges.



These innovative flooring solutions can meet the electrostatic needs of a sensitive space while still providing a low-maintenance, durable surface. With a combination of high-quality raw materials and innovative production techniques, these solutions can decrease ongoing costs, offering savings in water and chemicals.

And we've created a totally non-directional pattern image, making the conductivity all the more reliable.

As hardworking as they are, both Granit AS and Toro EL are not your typical dull, drab static conductive floor coverings. Choose one of nine color designs in the Toro EL collection for extremely sensitive applications such as operating rooms and chemical plants; or one of six color designs in the Granit AS collection, ideal in all of your less critical applications.

THE RIGHT
PERFORMANCE
FOR DEMANDING
ENVIRONMENTS

Toro EL

- suitable for areas where static discharges can cause problems
- meets ASTM standard for conductive flooring
- easy installation using conventional adhesives (roll form)
- iQ™ construction eliminates the need for wax or polish for the life of the floor

Granit AS

- permanent static dissipative properties in less critical areas
- easy installation using conventional adhesives (roll form)

Static Dissipative Flooring Granit AS

Granit AS is a high-performance, homogeneous, permanently antistatic resilient flooring that provides more than just an aesthetic appearance. It brings peace of mind that electrical charges will be dissipated throughout its lifetime. Available in six attractive color designs, it is as aesthetically pleasing as it is high performing.

Like Toro EL, Granit AS is easy to maintain, reducing the use of water and chemicals. This can save up to 30 percent on maintenance costs and up to 50 percent on water, detergent and energy costs. What's more, Granit AS is less susceptible to abrasion, stains and chemicals, maintaining its great looks throughout its long service life.



793 Storm
Roll | Tile*
Weldrod 1291210



795 Morning Mist W
Roll | Tile
Weldrod 1292801



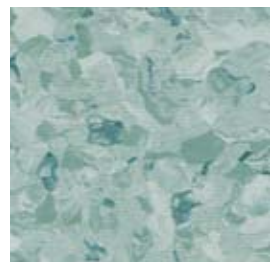
791 Fog Horn CG
Roll | Tile
Weldrod 1291811



790 Gravel Road CB
Roll | Tile*
Weldrod 1291821



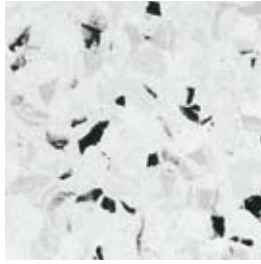
792 Heavy Fog CG
Roll | Tile*
Weldrod 1292767



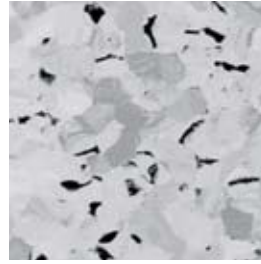
794 Country Sage
Roll | Tile*
Weldrod 1291794



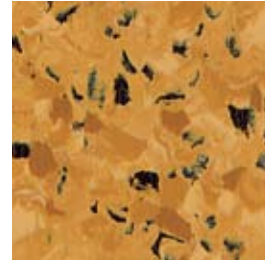
120 Nebula CG
Roll | Tile*
Weldrod 1291968



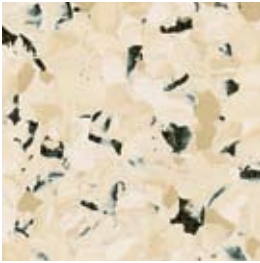
118 Country Road W
Roll | Tile
Weldrod 1292801



119 Marble Top CG
Roll | Tile
Weldrod 1291811



114 Early Autumn
Roll | Tile*
Weldrod 1288409



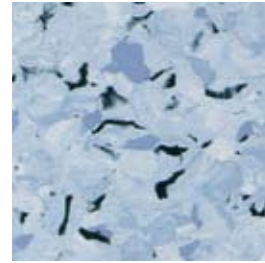
112 First Snow WB
Roll | Tile*
Weldrod 1292465



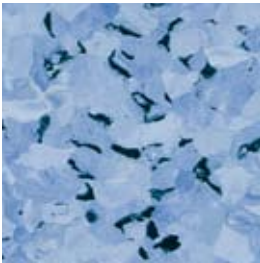
113 Sourdough WG
Roll | Tile*
Weldrod 1292319



115 Sea Port
Roll | Tile*
Weldrod 1291806



116 Spring Sky
Roll | Tile*
Weldrod 1288170



117 Spring Showers
Roll | Tile*
Weldrod 1288158



Static Conductive Flooring Toro EL

Flooring can be a critical element wherever electronic devices are produced, repaired, stored or used.

For instance, telecommunication centers, operating rooms, explosives manufacturing and other areas where conductivity is a concern. Toro EL has low electrical resistance (10^4 to 10^6 ohms), making it a safer, aesthetically pleasing choice in these applications.

Like Granit AS, Toro EL can be installed quickly and easily, using standard gluing methods.

Conductive adhesive is not needed when installing rolls. What's more, the backing is coated with pure carbon for increased and consistent conductivity.

*Standard non-stock item available in full cartons (tile). Call for availability.

We've identified Color Foundations neutrals in the following way: **WB** (warm beige), **CB** (cool beige), **WG** (warm grey), **CG** (cool grey), **B** (black), **W** (white)



Toro EL | Granit AS | The Tarkett Collection

DESCRIPTION

Toro EL combines outstanding technical properties with a unique design and a selection of non-directional colors. Suitable for operating rooms, electronic industries, computer rooms and similar applications. Toro EL in roll form has a special conductive treatment that allows installation using conventional adhesives in most areas. It is made with iQ™ construction, which means no sealers, waxes or polishes are required.

Granit AS is a homogeneous, static dissipative, resilient flooring manufactured using the latest technology. The conductive properties have been achieved by making some of the pigments electrically conductive. This provides stable and reliable conductivity while, at the same time, a product that is aesthetically pleasing. The pattern is non-directional. Granit AS in roll form has a special conductive treatment that allows installation using conventional adhesives in most areas.

| Technical Data | | Toro EL | Granit AS |
|-----------------------------|---------------------|---|---|
| Type of Floor Covering | EN 649 | Conductive Homogeneous Flooring | Static Dissipative Homogeneous Flooring |
| Classification | ASTM F-1913 | Exceeds (Also meets ASTM F-1303, Type II, Grade 1, Class B) | Exceeds (Also meets ASTM F-1303, Type II, Grade 1, Class B) |
| Wear Layer Thickness | EN 429 | 0.080" (2.0 mm) | 0.080" (2.0 mm) |
| Polyurethane Reinforced | | Yes | No |
| Total Thickness | EN 428 | 0.080" (2.0 mm) | 0.080" (2.0 mm) |
| Weight/sq yd/m ² | EN 430 | 5.67 lbs sq yd (3.1 kg sq meter) | 5.67 lbs sq yd (3.1 kg sq meter) |
| Abrasion/Thickness Loss | Pr EN 660: Part I | Group P: ≤ 0.15 mm | Group P: ≤ 0.15 mm |
| Residual Indentation | ASTM F-970/modified | 125/800 lbs/sq in | 125/800 lbs/sq in |
| Wear by Chair Casters | EN 425 | Suitable | Suitable |
| Underfloor Heating | | Suitable | Suitable |
| Impact Sound Resistance | DIN 52210 | +3dB | +3dB |
| Electrical Resistance | DIN 51953 | 10 ⁴ - 10 ⁶ ohms | 10 ⁶ - 10 ⁸ ohms |
| | ASTM F-150 | @ 500 volts 10 ⁴ - 10 ⁶ ohms | @ 500 volts 10 ⁶ - 10 ⁸ ohms |
| | ANSI / ESD-57.1-94 | @ 100 volts 10 ⁴ - 10 ⁶ ohms | @ 100 volts 10 ⁶ - 10 ⁸ ohms |
| Thermal Conductivity | DIN 52612 | .013m k/w | .013m k/w |
| Smoke Density | ASTM E-662 | < 450 | < 450 |
| Flammability | ASTM E-648 | Class 1 | Class 1 |
| Slip Resistance | ASTM D-2047 | > 0.5 COF | > 0.5 COF |
| Color Fastness | EN 20105-B02 | ≥ Level 6 | ≥ Level 6 |
| Chemical Resistance | EN 423 | Good Resistance | Good Resistance |
| Colors | | 9 | 6 |
| Roll length | | Approx. 82' (25 linear meters) | Approx. 82' (25 linear meters) |
| Width | | 6' 6" nominal (2 m) | 6' 6" nominal (2 m) |
| Tile Size | | 24" x 24" nominal (61 cm x 61 cm) | 24" x 24" nominal (61 cm x 61 cm) |
| Quantity | | 14 tiles per ctn, 56 sq ft (5.21 m ² per ctn) | 14 tiles per ctn, 56 sq ft (5.21 m ² per ctn) |

Please visit johnsonite.com for the most updated specifications, and installation, cleaning and maintenance instructions.

The weldrods listed are intended to correspond with the denoted Toro EL and Granit AS colors.

Other welding rods can be used for a variety of visual effects.

How to Order:

Toro EL

Roll: TOR-R-(XXX) Color Number
Tile: TOR-T-(XXX) Color Number

Granit AS

Roll: GRTAS-R-(XXX) Color Number
Tile: GRTAS-T-(XXX) Color Number

The Johnsonite system includes several accessories, including transitions, finishing borders, wall base, cove fillers and caps to complete your flooring design and installation. The Johnsonite system simplifies the design process by allowing you to deal with a single knowledgeable source - a Johnsonite consultant - to help you create high-performance spaces that work hard for end-users.

Johnsonite
A Tarkett Company
16910 Munn Road
Chagrin Falls, OH 44023
800-899-8916 or 440-543-8916

www.johnsonite.com

Johnsonite®