




Johnsonite®

HIGH-PERFORMANCE RUBBER FLOORING

A photograph of a woman sitting at a desk in a modern office. She is looking towards the right. On the desk in front of her is an open silver laptop. The floor is covered in blue rubber flooring with a geometric pattern. The lighting is soft and professional.

Rubber Flooring



“Ninety percent of business decision-makers say improvements in design can increase productivity.”

*ASID research study:
The Impact of Interior Design on the Bottom Line*

Studies show that high-quality design that integrates all interior elements can increase productivity by as much as 20 percent.* The right flooring can make people more comfortable, control noise, reduce slips/falls, lower maintenance costs and downtime, and minimize change-rate costs. And it can motivate and inspire through color, pattern, texture and design.

**INTRODUCING THE WORLD’S MOST INTEGRATED,
HIGH-PERFORMANCE FLOORING SYSTEM.**

Now you can design floors that make perfect sense over the whole space, working with one trusted partner. Our system, which includes rubber, linoleum, homogeneous and heterogeneous vinyl, sports flooring, stair treads, finishing borders (wall base), chair rails and transitions, is modeled after all good design paradigms, uniting function and aesthetics to help you create efficiencies that pay off for the end-user in real lifetime return. Every element is designed to work together functionally, aesthetically and logistically.

THE SYSTEM MAKES YOUR LIFE EASIER.

The Johnsonite system simplifies the design process by allowing you to deal with a single knowledgeable source — a Johnsonite consultant — to help you create high-performance spaces that work hard for end-users.



*The Gensler Design + Performance Index
The U.S. Workplace Survey

Creating high-performance environments.

Roundel® Rubber Tile.

Welcome to the rubber revolution.

Revolutions start with ideas. And rubber flooring is an idea whose time has come. Designers are bringing rubber flooring out of the backroom and into the halls of academia, the floors of upscale retail spaces, the corridors of healthcare institutions and the conference rooms of large corporations.

Designers are embracing rubber's practical beauty. It's slip-resistant, shock absorbent and has natural acoustic properties. They're using it to create spaces that inspire and motivate, yet are safe and efficient. And they've discovered a huge benefit along the way: rubber is truly sustainable, with its long life cycle and low maintenance requirements. Rubber is more resource-efficient over time than other materials. And that reduces the impact on the environment while increasing the value proposition for end-users.

Only Johnsonite's rubber flooring is part of an integrated system that lets you use rubber in one area, vinyl or other flooring solutions in another and use our accessories and finishing borders to connect all the dots.

HOW RUBBER
FLOORING HELPS
YOU CREATE
HIGH-PERFORMANCE
ENVIRONMENTS

Long life cycle, lower costs.

- durable surface with long service life
- maintains appearance over time
- easy to clean, no waxing required
- extended life means fewer replacements
- less disruption to people using the space

Provides safety.

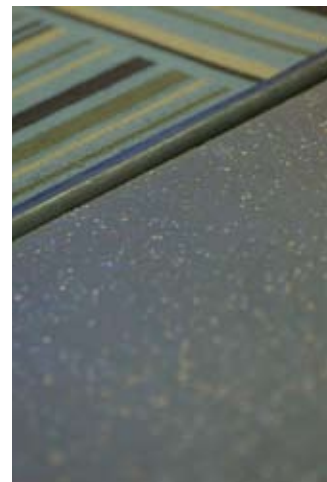
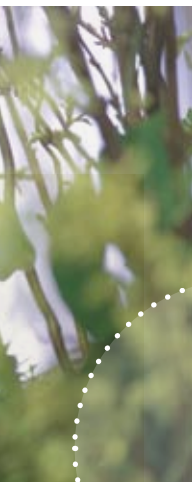
- provides superior slip resistance
- reduces the number of slips/falls resulting in insurance claims
- sterile, and easy to clean, does not hold dust and allergens

Low environmental impact.

- eliminates use of chemicals to strip and wax
- longer life means fewer resources to remake, transport and install
- FloorScore™ certified

Elements for a motivating space.

- available in 16 distinct textures and an unlimited combination of pattern and color
- underfoot comfort helps alleviate fatigue and impact on joints and backs
- sound absorption leads to less disruption
- coordinating stair treads, finishing borders (wall base), chair rails, transitions and other finishing accessories

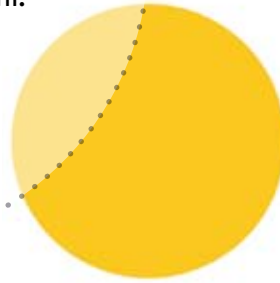


Roundel® Rubber Tile.

1.

Select a pattern.

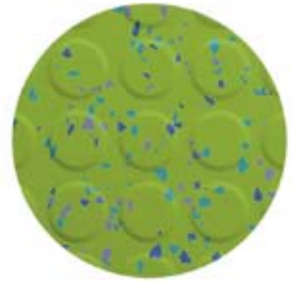
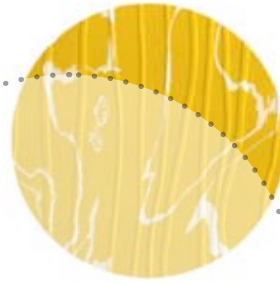
Solid
Speckled
Prima



Start your own design revolution.

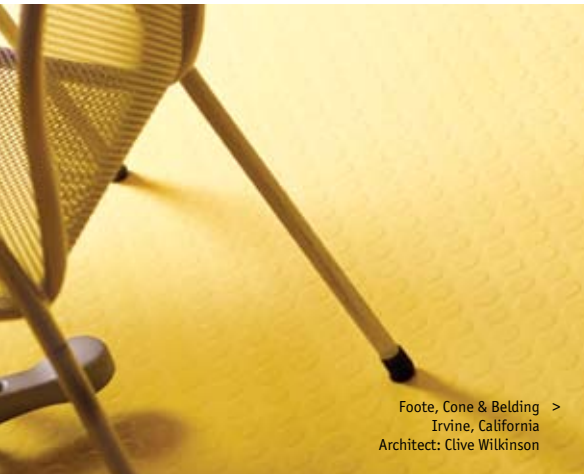
We, the people of Johnsonite, believe freedom of design should be an inalienable right. Freedom to find the exact color, the perfect pattern and most appealing texture imaginable. We provide all the color tools fundamental to freedom of expression, beginning with more than 70 standard color choices and the ability to create your own custom colors and patterns.

We give you more choices in texture than anyone, 11 Roundel and 5 Circulinity™ tile textures alone, to help you design a space the way you see it and feel it. And we give you a way to choose colors, patterns and textures confidently, with our interactive online design tools. In a few steps, you'll see your design online; you can then choose to receive an accurate printed sample showing your creation from several perspectives with our innovative CustomfloorView™ program. Finally, you can receive a hard sample of your unique design to ensure the utmost confidence in your finished space. Here's to freedom of design.

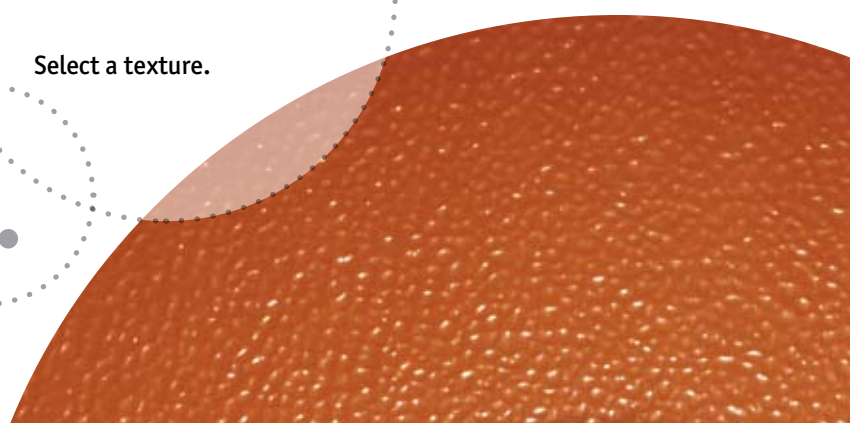


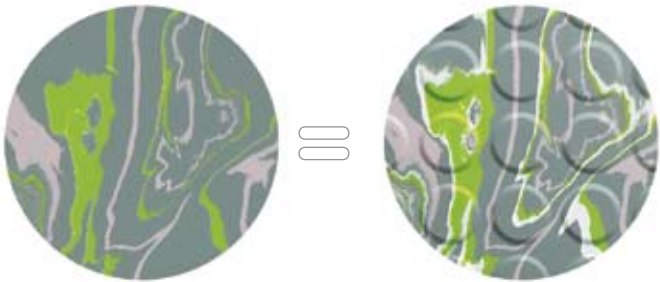
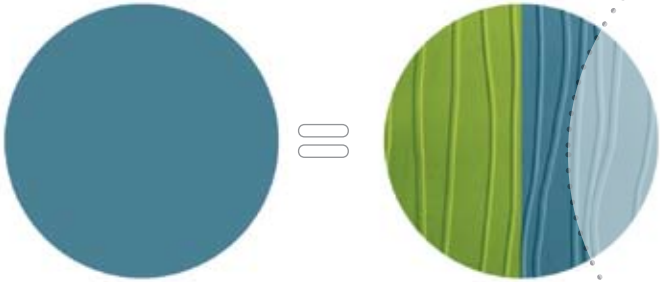
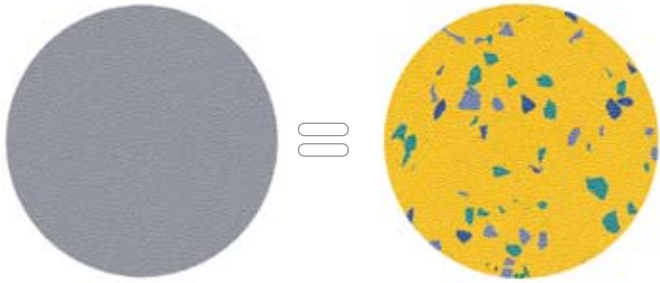
Select a texture.

2.



Foote, Cone & Belding >
Irvine, California
Architect: Clive Wilkinson





= freedom of design.

The right to get the pattern you want, in the color and quantity you want, when you want it, at a reasonable cost — that should be a fundamental right. And it is with Johnsonite. We promise you won't wait a long time for custom colors or patterns. We promise you won't hear the words, "that's impossible." We promise you freedom of design. So go for it. Design without constraint. Push the boundaries. Do what you do best.

**CUSTOM:
A FUNDAMENTAL
RIGHT FROM
JOHNSONITE**

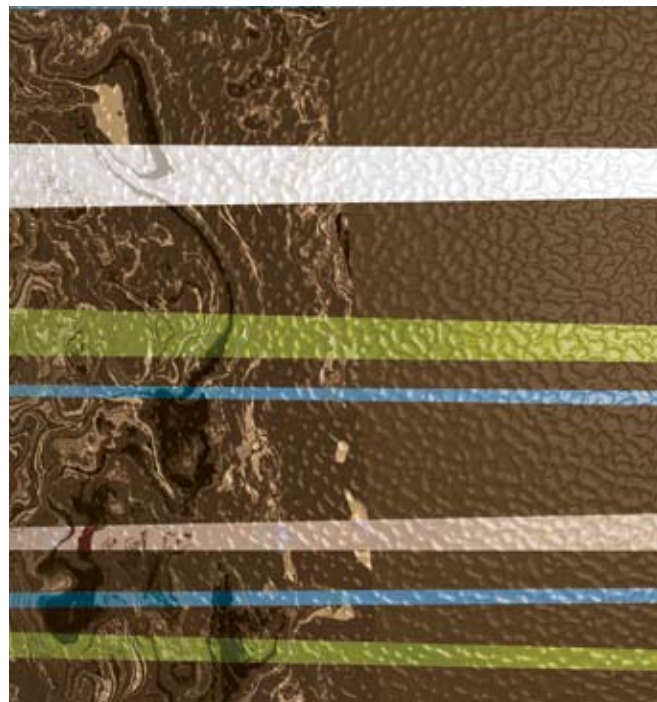
3.



Select colors.

The Johnsonite integrated flooring system lets you look at each space as a whole, offering flooring, stairwell management and finishing borders (wall base) in coordinating colors, to tie it all together.

**COORDINATING
JOHNSONITE COLORS**



Roundel® Rubber Tile

SOLID COLORS. SOLID SOLUTIONS.

Freedom of choice starts here, with Roundel solid rubber tile in 74 standard colors. Combine color with the most standard textures in the industry for a unique and inspired look.

- thickness = 1/8" (3.2 mm)
- tile size = 24" x 24" (610 mm x 610 mm nominal)
- Raised Round and Raised Square textures also available in .155" (4 mm) thickness
- Naturally slip-resistant
- Comfortable underfoot
- Easy to maintain
- Custom logo and floor design capabilities
- Low life-cycle costs

COLOR FOUNDATIONS™

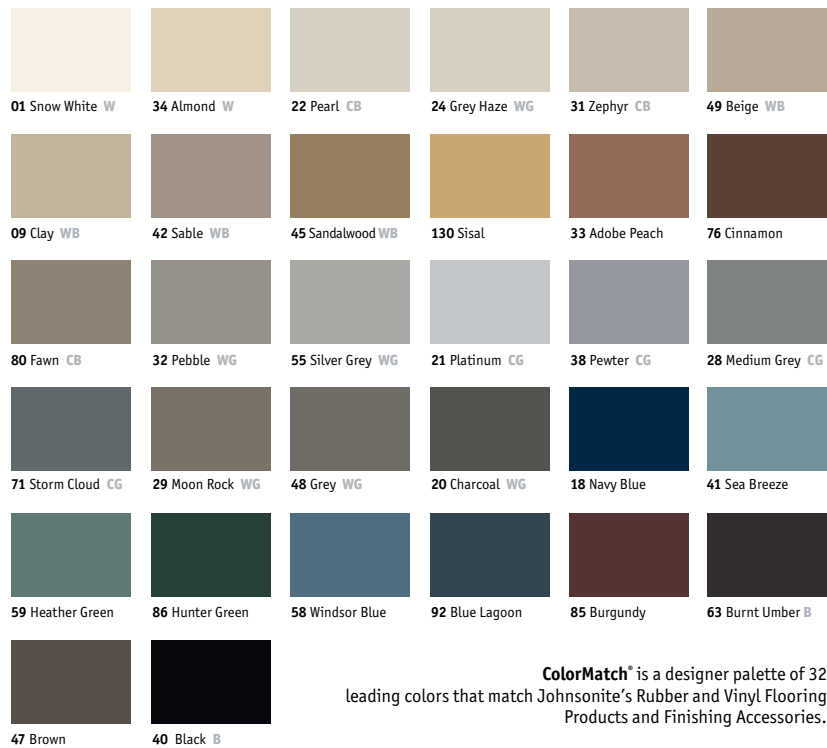
Now you'll never again have to worry about coordinating neutrals across product lines, patterns or textures.

We guarantee you'll always have neutrals that coordinate over our whole system of flooring, stairwell management, finishing borders (wall base) and accessories. And with six neutral palettes – Warm Grey, Cool Grey, Warm Beige, Cool Beige, Black and White – you can design any space with confidence.



We've identified Color Foundations neutrals in the following way: **WB** (warm beige), **CB** (cool beige), **WG** (warm grey), **CG** (cool grey), **B** (black), **W** (white)

COLOR PALETTE A



ColorMatch® is a designer palette of 32 leading colors that match Johnsonite's Rubber and Vinyl Flooring Products and Finishing Accessories.

COLOR PALETTE B



LET TEXTURE SET YOU FREE.

Only Johnsonite gives you the freedom to design with such feeling, offering the industry's largest selection of textures. That's 11 textures, plus 5 more Circulinity™, multiplied by an infinite number of colors. You do the math. Then start imagining the possibilities.

Textures shown in one-half actual size. For more textures, see Circulinity on page 8.

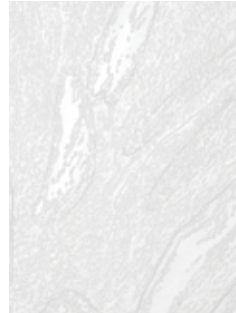
Smooth (RET)



Weathered (WRT)



Hammered (HRT)



Flagstone (FRT)



Raised Square (RT)



Raised Round (RT)



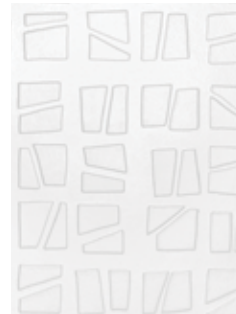
Bamboo (BMRT)



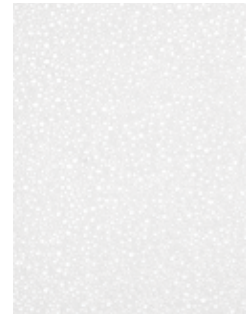
Chopped Bamboo (CBMRT)



Cubis (CRT)



Artistic Square (ART)



Pebbles (PRT)

RUBBER TILE TEXTURE AVAILABILITY					
TEXTURES	TILE PATTERNS				TREAD PATTERN
	Roundel Solid Color	Roundel Speckled	Prima Olio and Prima Marbleized Tile	CityScope	Rubber Tread with Integrated Riser
Weathered	STD	STD	STD	SO	N/A
Hammered	STD	STD	STD	STD	STD
Flagstone	STD	STD	STD	N/A	N/A
Raised Square	STD	STD	SO	N/A	STD
Raised Round	STD	SO	SO	N/A	STD
Smooth for accents & borders	STD	N/A	STD	N/A	N/A
Bamboo	STD	SO	SO	N/A	STD
Chopped Bamboo	STD	SO	SO	N/A	N/A
Cubis	STD	SO	SO	N/A	STD
Artistic Square	STD	SO	SO	N/A	N/A
Pebbles	STD	SO	SO	N/A	N/A
Fast Lane	STD	SO	SO	N/A	STD
Round-A-Bout	STD	SO	SO	N/A	N/A
Tricycle	STD	SO	SO	N/A	N/A
Tic-Tac-Toe	STD	SO	SO	N/A	N/A
Effervescent	STD	SO	SO	N/A	N/A

STD = Standard SO = Special Order N/A = Not Available

Circulinity™. New textures. New system.

Circulinity is a specially designed component rubber tile system that provides limitless floor pattern options. The collection consists of 5 different, yet coordinated, patterns of circles and lines that work with each other or alone. The patterns can be arranged in any direction, creating special effects through the distinctive light refraction built into each one. Mix and match between the 5 textures to create your own unique space.

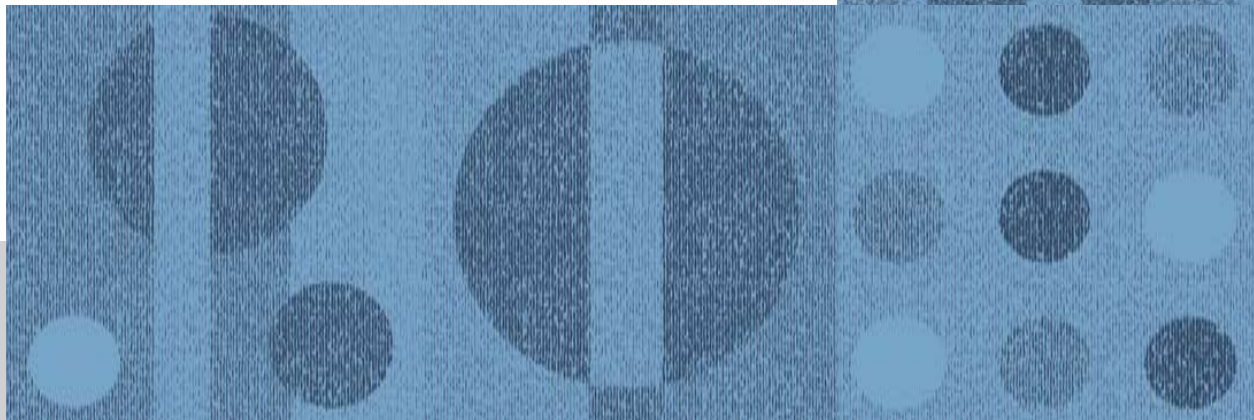


- thickness = 1/8" (3.2 mm)
- tile size = 24" x 24"
(610 mm x 610 mm nominal)
- Naturally slip-resistant
- Combination of performance and design flexibility
- Easy to maintain

Fast Lane™ (CFL)*



Round-A-Bout™ (CRB)



Tricycle™ (CTR)

Tic-Tac-Toe™ (CTT)

A+B

For available standard colors see page 6.
Custom colors available.

Effervescent™ (CEF)

*Fast Lane also available in rubber tread with integrated riser.

Images are representative of tile texture.



It's patterning
once only possible
with carpet tiles.

Patterns of change.



Roundel® Prima® Marbleized and Prima Olio®

Now you can create your own signature rubber flooring, designing a custom look that also keeps safety, productivity and comfort in mind. Johnsonite makes it easy, allowing you to integrate the colors and character of the space into your own marbleized design or a unique oil-and-water effect. You can preview your signature colorway at johnsonite.com with the Interactive Viewer, receive a printed sample from our CustomfloorView™ program and an actual production sample to ensure confidence in your decision.


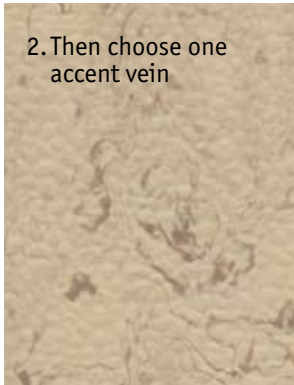
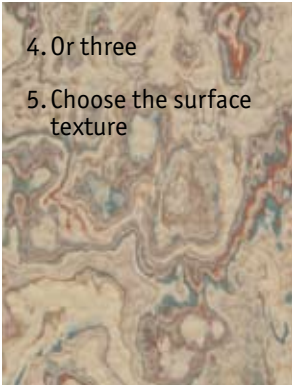
PRIMA MARBLEIZED Textures shown in one-half actual size.

thickness = 1/8" (3.2 mm)
tile size = 12" x 12" (305 mm x 305 mm nominal)

<p>1. Choose a field color</p>  <p>09 Clay</p>	<p>2. Then choose one accent vein</p>  <p>09 Clay 80 Fawn</p>	<p>3. Or two</p>  <p>09 Clay 80 Fawn 33 Adobe Peach</p>	<p>4. Or three</p> <p>5. Choose the surface texture</p>  <p>09 Clay 80 Fawn 33 Adobe Peach 41 Sea Breeze</p>
--	--	--	---

PRIMA OLIO Textures shown in one-half actual size.

thickness = 1/8" (3.2 mm)
tile size = 12" x 12" (305 mm x 305 mm nominal)

<p>1. Choose a field color</p>  <p>09 Clay</p>	<p>2. Then choose one accent vein</p>  <p>09 Clay 80 Fawn</p>	<p>3. Or two</p>  <p>09 Clay 80 Fawn 33 Adobe Peach</p>	<p>4. Or three</p> <p>5. Choose the surface texture</p>  <p>09 Clay 80 Fawn 33 Adobe Peach 41 Sea Breeze</p>
--	--	--	---

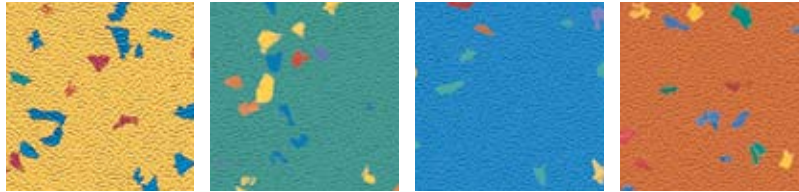


Roundel® Speckled. Make it your own.

Thinking speckles? Choose from the industry's largest standard selection. Roundel Speckled Rubber Tile is available in 3 distinct collections, offering 27 standard patterns in all. You'll also enjoy all of the most important life-safety, durability, comfort and life-cycle benefits, making it ideal in so many high-performance environments. Or create your own Speckled pattern. Pick your background color. Add a speckled color. Or two. Or three. Pick up all the colors in the space and put them into one perfect pattern.

VIBRANCE® COLLECTION

thickness = 1/8" (3.2 mm)
tile size = 24" x 24" (610 mm x 610 mm nominal)



718 Sunburst 720 Aquamarina 721 Blue Skies 719 Citrus



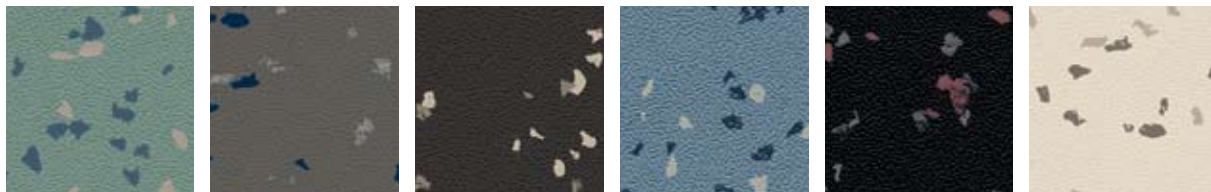
722 Watermelon 717 Wildflower 724 Confetti W 723 Fireworks B

Visit johnsonite.com to use our Interactive Viewer and design your very own custom tile colorway. Then with our CustomfloorView™ program, receive a printed sample and an actual production sample to ensure confidence in your selection.

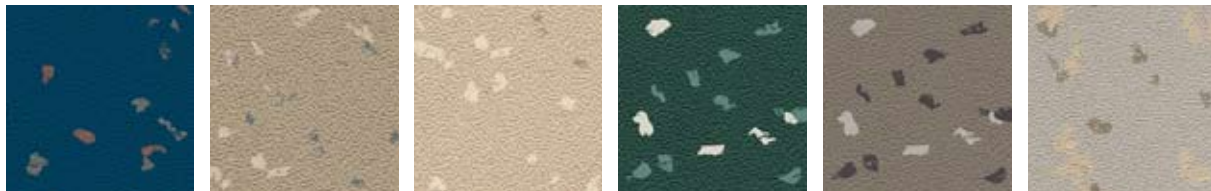
All speckles shown in actual size in Weathered texture.

ARTISAN® COLLECTION

thickness = 1/8" (3.2 mm)
tile size = 24" x 24" (610 mm x 610 mm nominal)



716 Celadon 710 Saber WG 725 Meteor B 715 Ming Blue 709 Empire B 728 Sidewalk CB



714 Azure 712 Curry CB 713 Sahara WB 727 Vine 726 Mud Pie WG 711 Steam WG

MATERA® COLLECTION

thickness = 1/8" (3.2 mm)
tile size = 24" x 24" (610 mm x 610 mm nominal)



583 Sicily CG 584 Venice WG 585 Florence WG 586 Milan CG



587 Naples CG 588 Genoa WG 589 Tuscany B

All speckles shown in actual size in Hammered texture.



^
Abrazo Health Care
Corporate Headquarters
Phoenix, Arizona

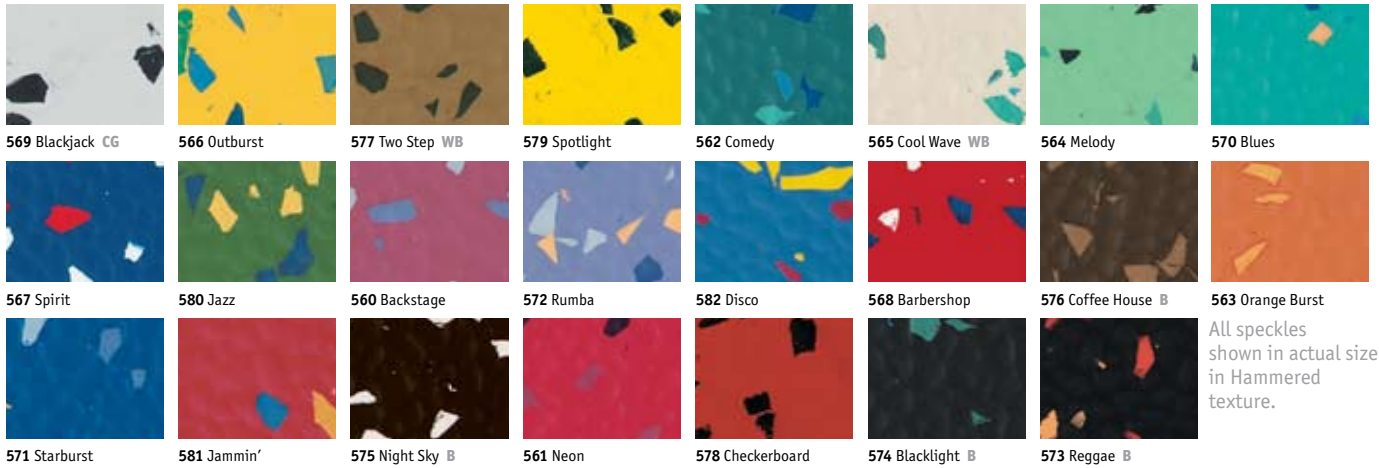


CityScape™

CityScape fits into the design picture whenever budget is a consideration. Offering all of the high-performance benefits of Roundel rubber flooring, CityScape is 2 mm rubber flooring that's available at a lower cost.

THE NIGHTLIFE® COLLECTION

thickness = .080" (2 mm) tile size = 24" x 24" (610 mm x 610 mm nominal)
(1/8" tiles available by special order)



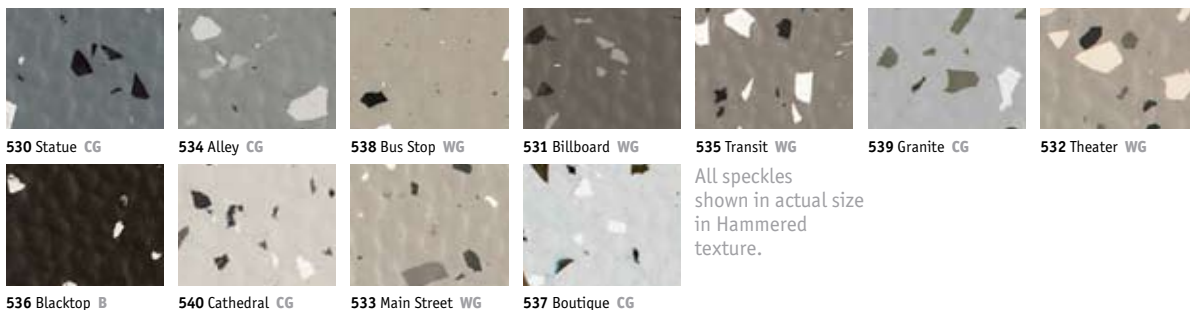
THE GARDENS® COLLECTION

thickness = .080" (2 mm) tile size = 24" x 24" (610 mm x 610 mm nominal)
(1/8" tiles available by special order)



THE DOWNTOWN® COLLECTION

thickness = .080" (2 mm) tile size = 24" x 24" (610 mm x 610 mm nominal)
(1/8" tiles available by special order)



THE GREENWICH® COLLECTION

thickness = .080" (2 mm) tile size = 24" x 24" (610 mm x 610 mm nominal)
(1/8" tiles available by special order)



We've identified Color Foundations™ neutrals in the following way:
WB (warm beige), CB (cool beige), WG (warm grey), CG (cool grey), B (black), W (white)

ComforTech® Rubber Sheet

FREEDOM FROM FATIGUE.

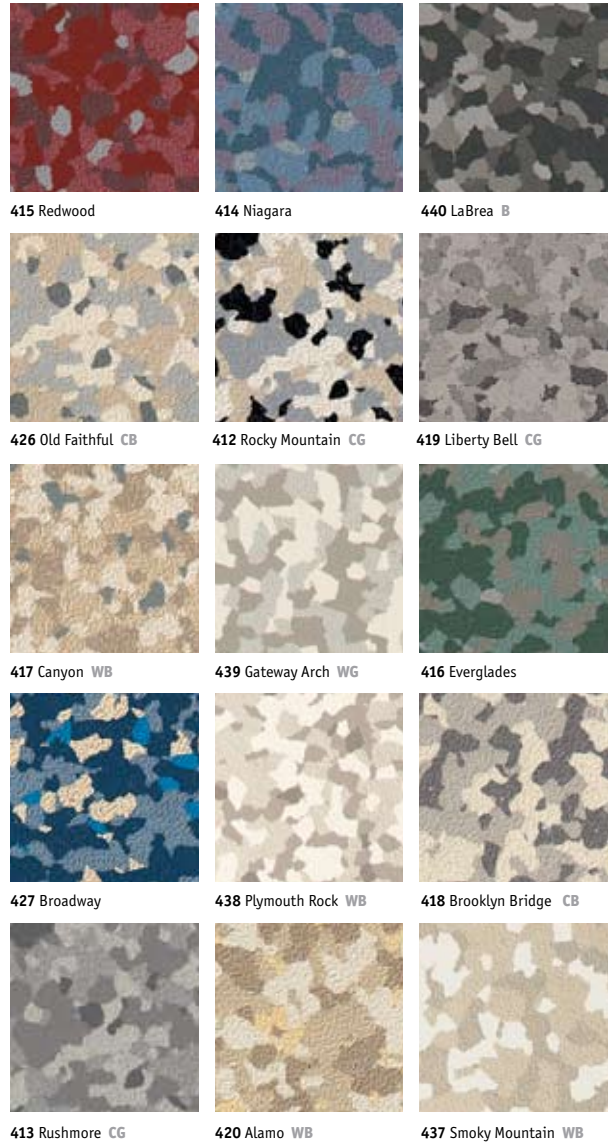
ComforTech is designed to consider people on their feet all day or children at play. Use it anywhere an extra layer of cushioning is key.

- Cushioned inner layer
- Slip-resistant wear layer
- Enhances life safety
- Enhances walking comfort and reduces leg and foot fatigue
- Absorbs sound from rolling and pedestrian traffic



ANTHEM® COLLECTION

thickness = .080" (2 mm)
roll width = 55" (1.4 m nominal)
roll length = approximately 49'3" (15 m)



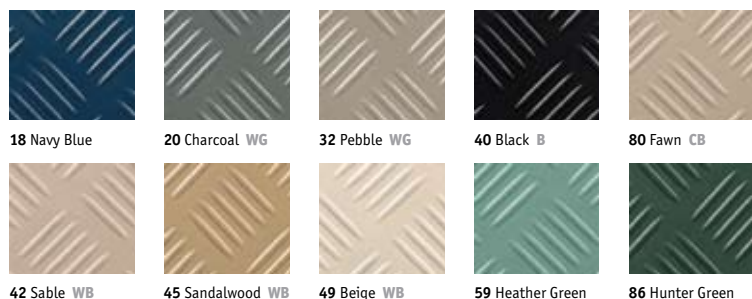
Speckles shown in actual size.

SOLID COLOR CHECKER COLLECTION

thickness = .118" (3 mm) roll width = 54" (1.37 m nominal) roll length = approximately 32'10" (10 m)



The Checker surface texture shown here is one-half actual size. Other colors shown at right are 25% of actual size.



We've identified Color Foundations™ neutrals in the following way: **WB** (warm beige), **CB** (cool beige), **WG** (warm grey), **CG** (cool grey), **B** (black), **W** (white)

Defiant™ Oil and Grease Resistant Rubber Tile

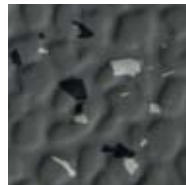
Defiant tiles are engineered to work most anywhere petroleum products, animal fats and vegetable oils are present. It meets ASTM specifications D-471 for Oil and Grease Resistance and F-925 for Chemical Resistance to assure you the best protection available. Defiant requires no additional waxing or sealing and helps prevent slips and falls. When you choose Defiant Rubber Flooring, you're helping to create a high-performance environment that allows the occupants to be safer, more efficient and more productive.

6 STANDARD SPECKLED COLORWAYS

thickness = 1/8" (3.2 mm)
tile size = 24" x 24" (610 mm x 610 mm nominal)



729 Thickett CB



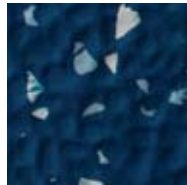
732 Tundra WG



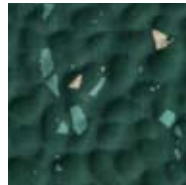
733 Molten B



277 Cold Front CG



278 Dress Blues



279 Dew Point

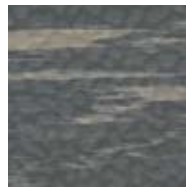
Defiant is also available in stair treads as special order.



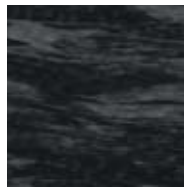
4 STANDARD PRIMA™ MARBLEIZED COLORWAYS



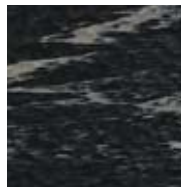
295 Hazy



296 Misty WG



297 Blackout B



298 Vague B

Each tile is unique through variation of pattern and configuration.

6 SOLID COLOR TILES



40 Black B



86 Hunter Green



18 Navy Blue



80 Fawn CB



20 Charcoal WG



48 Grey WG


MEETS ASTM SPECIFICATIONS

- D-471 Oil and Grease Resistance
- F-925 Resistance to Chemicals
- F-1344 Rubber Floor Tile
- F-2199 Dimensional Stability
- D-3389 Abrasion Resistance
- D-2240 Hardness > 85
- F-970 Static Load < 0.005"
- F-1514 Resistance to Heat
- D-2047 Slip Resistance > 0.5
- E-648 – Class 1
- E-662 Smoke < 450; Passes
- ADA Slip Resistance on Ramps and Flat Surfaces

APPLICATIONS

- Food preparation areas
- Bakeries
- Cafeterias and restaurant areas
- Factory production areas
- Oil change work areas and waiting rooms
- Auto customer service and parts counter areas
- Service stations and mini-marts
- Machine shops
- Restrooms
- Commercial kitchens





For sampling and the most updated specifications,
warranty, installation and maintenance details,
contact Johnsonite or visit us at johnsonite.com.

Johnsonite
A Tarkett Company
16910 Munn Road
Chagrin Falls, OH 44023
800-899-8916 or 440-543-8916

www.johnsonite.com

Johnsonite[®]

©2007 Johnsonite Inc. Printed in the USA 95100-621 05/07 JOH2217