

A man in a red jacket is balancing on a large, textured rock formation on a beach. He is in a dynamic, slightly off-balance pose, with his arms outstretched. Three glowing white circles are superimposed around his waist, suggesting a hula hoop or a digital effect. The background shows the ocean with waves crashing against the shore under a bright, hazy sky.

# Johnsonite®

The future will belong to organizations  
that put people in the center.

see us at  
**Sweets**.com

[www.johnsonite.com](http://www.johnsonite.com)



## Introducing the world's first integrated, high-performance flooring system.

With Johnsonite, you can now design floors that make perfect sense over the whole space, working with one trusted partner. Our system, which includes rubber, vinyl and linoleum flooring, stairwell management systems, finishing borders (wall base) and accessories, is modeled after all good design paradigms, uniting function and aesthetics to help you create efficiencies that pay off for the end-user in real lifetime return.

Human productivity is at the center of a high-performance space.

rubber + linoleum + vinyl + stair treads + finishing borders (wall base) + accessories

## The Color Foundations™ System. Design with absolute confidence.



With Color Foundations™, we guarantee you'll always have the neutrals that coordinate over our whole system of rubber, linoleum and vinyl flooring, stairwell management systems, finishing borders (wall base) and accessories.

Now you'll never have to worry about coordinating neutrals across product lines, patterns and textures. And, with six neutral palettes, you can design any space with confidence.

The true beauty of working within the Color Foundations System may not be fully realized until the time comes to expand or refresh the space. Whether it's 5, 10 or 20 years from now, there will still be colors and patterns available that work within your original standards program.

Visit us at [www.johnsonite.com](http://www.johnsonite.com) for complete information.



# Roundel® Rubber Tile

09 65 00/JOH  
BuyLine 0822

Roundel Rubber Tile is a collection that epitomizes the depth of design dimension Johnsonite offers. It begins with a wide range of standard color choices, from deep, rich tones and dependable neutrals to colors that are bold and bright. Then, choose from more standard textures than any other rubber flooring manufacturer, with each texture distinct enough to create a unique look of its own.

Let's see. Red in raised round or in bamboo? It's all up to you – there are so many possibilities to create a space that is uniquely your own. With Johnsonite, solid colors plus texture add up to amazing freedom of design.

[www.johnsonite.com](http://www.johnsonite.com)

High-performance environments don't just happen. They're carefully planned, and often include Roundel® Rubber Tiles, whether in a solid color, speckled pattern or your own customized Prima® Olió® or Prima® Marbleized design. Johnsonite rubber tile is available in so many colors and patterns, with up to 16 distinctive textures to mix and match, it's easy to design a safer, more comfortable space in three easy steps.

1. **Select a pattern.**  
• Solid • Speckled • Prima
2. **Select a texture.**
3. **Select colors.**

thickness = 1/8" (3.175 mm)  
tile size = 24" x 24" nominal  
(610 mm x 610 mm)

## Roundel Rubber Tile Textures

For available colors reference color palettes A + B in the Johnsonite Story. Custom colors available.

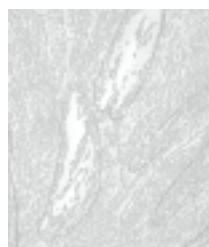
Not only does Johnsonite offer the industry's largest selection of colors, but also the opportunity to further refine your look with a choice of 11 distinctive textures. Many of these are also available in stair treads. **Please call for details or visit [www.johnsonite.com](http://www.johnsonite.com).**



Weathered (WRT)



Hammered (HRT)



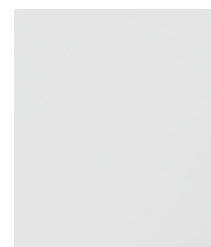
Flagstone (FRT)



Raised Square (RT)



Raised Round (RT)



Smooth (RET)



Bamboo (BMRT)



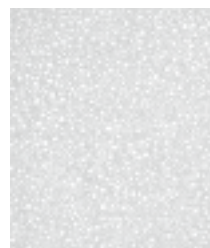
Chopped Bamboo  
(CBMRT)



Cubis (CRT)



Artistic Square (ART)

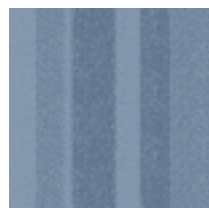


Pebbles (PRT)

Textures shown in one-half actual size.

See the Johnsonite Story for more information or visit [www.johnsonite.com](http://www.johnsonite.com)

## Circulinity™. New textures. New system.



Fast Lane™ (CFL)



Round-A-Bout™ (CRB)



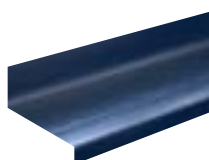
Tricycle™ (CTR)



Tic-Tac-Toe™ (CTT)



Effervescent™ (CEF)



Fast Lane also available in rubber tread with integrated riser.

Circulinity™ is a specially designed component rubber tile system that provides limitless floor pattern options. The collection consists of 5 different, yet coordinated, patterns can be arranged in any direction, creating special effects through the distinctive light refraction built into each one. Mix and match between the 5 textures to create your own unique space.

To create your unique flooring program with Circulinity™, please visit [Johnsonite.com](http://Johnsonite.com).






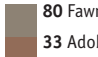
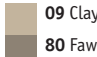

For available colors reference color palettes A + B in the Johnsonite Story. Custom colors available.

# Roundel® Prima® Marbleized and Prima Olio®

Now you can create your own signature rubber flooring, designing a custom look that also keeps safety, productivity and comfort in mind. Johnsonite makes it easy, allowing you to integrate the colors and character of the space into your own marbleized design or a unique oil-and-water effect. You can preview your signature colorway at [johnsonite.com](http://johnsonite.com) with the Johnsonite Product Design Tool, receive a printed sample from our CustomfloorView™ program and an actual production sample to ensure confidence in your decision.

## PRIMA MARBLEIZED Textures shown one-half actual size.

thickness = 1/8" (3.2 mm)  
tile size = 12" x 12" nominal (305 mm x 305 mm)

<p>1. Choose a field color</p>  <p>09 Clay</p>	<p>2. Then choose one accent vein</p>  <p>09 Clay 80 Fawn</p>	<p>3. Or two</p>  <p>09 Clay</p>  <p>80 Fawn 33 Adobe Peach</p>	<p>4. Or three</p> <p>5. Choose the surface texture</p>  <p>09 Clay 80 Fawn</p>  <p>33 Adobe Peach 41 Sea Breeze</p>
--	--	--	--

## PRIMA OLIO Textures shown one-half actual size.

thickness = 1/8" (3.2 mm)  
tile size = 12" x 12" nominal (305 mm x 305 mm)

<p>1. Choose a field color</p>  <p>09 Clay</p>	<p>2. Then choose one accent vein</p>  <p>09 Clay 80 Fawn</p>	<p>3. Or two</p>  <p>09 Clay</p>  <p>80 Fawn 33 Adobe Peach</p>	<p>4. Or three</p> <p>5. Choose the surface texture</p>  <p>09 Clay 80 Fawn</p>  <p>33 Adobe Peach 41 Sea Breeze</p>
--	--	--	--

# Roundel® Vibrance®, Artisan® and Matera®

thickness = 1/8" (3.2 mm)  
tile size = 24" x 24" nominal (610 mm x 610 mm)

Enjoy all the benefits of Roundel Speckled Rubber Tile with life-safety, durability and comfort making it ideal for any high-performance environment.

For texture availability please visit [Johnsonite.com](http://Johnsonite.com).

## VIBRANCE® COLLECTION



718 Sunburst    720 Aquamarina    719 Citrus

8 colors available

## ARTISAN® COLLECTION



716 Celadon    710 Saber    715 Ming Blue

12 colors available

## MATERA® COLLECTION



583 Sicily    584 Venice    585 Florence

23 colors available

# CityScape™

thickness = .080" (2 mm) tile size = 24" x 24" nominal (610 mm x 610 mm)  
(1/8" tiles available by special order)

Available in Hammered texture.  
Weathered available by special order.

CityScape is a family of .080" (2mm) rubber floor tile designed to deliver all of the important benefits of rubber flooring at a more economical price.

## THE NIGHTLIFE® COLLECTION



566 Outburst    581 Jammin'    582 Disco

23 colors available

## THE GARDENS® COLLECTION



550 Carriage    555 Lily Pond    551 Meadows

10 colors available

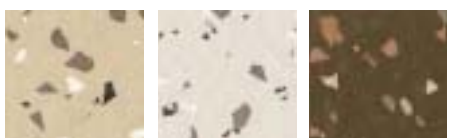
## THE DOWNTOWN® COLLECTION



530 Statue    536 Blacktop    540 Cathedral

11 colors available

## THE GREENWICH® COLLECTION



546 Playhouse    547 Cornerstone    548 Chocolate Shop

9 colors available



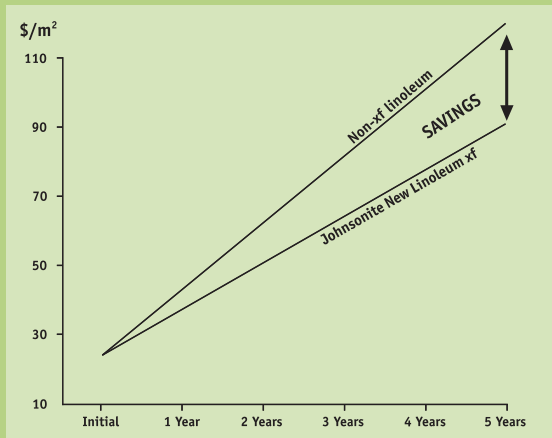
For a view of the full line of Roundel® and CityScape™ solutions, please visit [Johnsonite.com](http://Johnsonite.com).

# Linoleum xf™

The story of more and less.  
And more.

xf™ Finish is exactly what linoleum needed. A tough surface to protect and enhance a beautifully natural and renewable product. Which is exactly what our exclusive xf surface treatment does.

xf Finish changes the whole linoleum equation, starting with maintenance. With xf, the end-user saves 30 percent on maintenance costs. That's because xf Finish requires much less wax and polish, and cleaning and stain removal are faster and easier. In addition, end-users reduce their use of water, detergent and energy by 50 percent. All of which gives Linoleum xf an extremely low life-cycle cost.



The greatest percentage of cost over the life of a floor is not the initial investment and installation – it's the cleaning and maintenance. Because Linoleum xf is so much easier to maintain, xf Finish starts paying for itself immediately. That's real ROI.

Linoleum is at the intersection of beauty and toughness. No other linoleum is so resistant to stain, abrasion or chemicals. In fact, extensive testing shows that Linoleum xf significantly outperforms ordinary linoleum in brightness and color retention, in alkali resistance and stain resistance to a series of substances, including acetone, coffee and betadine.

We offer a full line of rich colors to help you create custom linoleum designs. Please visit the Johnsonite Product Design Tool on Johnsonite.com.

For a view of the full line of Linoleum xf Natural, Contemporary, Urban, and Cosmopolitan solutions, please visit Johnsonite.com.

## Linoleum xf Natural

18 colors available

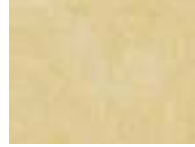
09 65 00/JOH  
BuyLine 0822



**Veneto | 617 Quartz**  
Roll 2.0 mm, 2.5 mm  
Weldrod 1750617



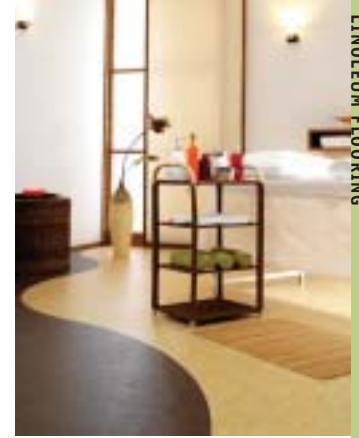
**Toscano | 522 Jasper**  
Roll 2.5 mm  
Weldrod 1750522



**Veneto | 622 Geode**  
Roll 2.0 mm, 2.5 mm  
Weldrod 1750119



**Toscano | 524 Tiger Eye**  
Roll 2.5 mm  
Weldrod 1750524



LINOLEUM FLOORING

thickness = see individual pattern for availability roll width = 6'6" nominal (2 m)  
roll length = 20-30 lm/65-100 linear feet nominal tile size = 19.68" x 19.68" nominal (500 mm x 500 mm)

## Linoleum xf Contemporary

18 colors available



**Toscano | 535 Hot Spring**  
Roll 2.5 mm  
Weldrod 1750535



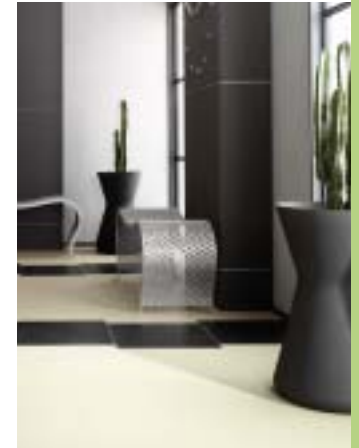
**Toscano | 559 Fish Pond**  
Roll 2.5 mm  
Weldrod 1750559



**Veneto | 652 Kayak**  
Roll 2.0 mm, 2.5 mm | Tile  
Weldrod 1750652



**Veneto | 603 Sand Dollar**  
Roll 2.0 mm, 2.5 mm | Tile  
Weldrod 1750603



thickness = see individual pattern for availability roll width = 6'6" nominal (2 m)  
roll length = 20-30 lm/65-100 linear feet nominal tile size = 19.68" x 19.68" nominal (500 mm x 500 mm)

## Linoleum xf Urban

11 colors available



**Veneto | 675 Horizon**  
Roll 2.5 mm  
Weldrod 1750672



**Veneto | 602 Luminary**  
Roll 2.0 mm, 2.5 mm | Tile  
Weldrod 1750306



**Veneto | 674 Falling Star**  
Roll 2.0 mm, 2.5 mm | Tile  
Weldrod 1750674

thickness = see individual pattern for availability roll width = 6'6" nominal (2 m)  
roll length = 20-30 lm/65-100 linear feet nominal tile size = 19.68" x 19.68" nominal (500 mm x 500 mm)

## Linoleum xf Cosmopolitan

18 colors available



**Veneto | 634 Daisy**  
Roll 2.0 mm, 2.5 mm | Tile  
Weldrod 1750634



**Veneto | 612 Dandelion**  
Roll 2.0 mm, 2.5 mm, 3.2 mm  
Tile | Weldrod 1750612



**Veneto | 645 Ladybug**  
Roll 2.0 mm, 2.5 mm  
Weldrod 1750645

thickness = see individual pattern for availability roll width = 6'6" nominal (2 m)  
roll length = 20-30 lm/65-100 linear feet nominal tile size = 19.68" x 19.68" nominal (500 mm x 500 mm)

# iQ™ Construction – a no finish floor that delivers on its promise for life



## NO WAX, NO FINISH FOR LIFE

No other comparable product can live up to this claim. Because no other comparable product has our proprietary iQ™ Construction. Read the fine print in the maintenance instructions of other products, and you'll find that they need to be waxed or finished at some point in time. iQ™ Construction means no waxing or finishing for the lifetime of the floor. It's that simple. A minimum amount of wet cleaning. Some dry buffing. None of the waxes, polishes, strippers and other chemicals that add needless maintenance and needless expense. How do we know it's true? More than 240 million square yards of iQ constructed product have been installed by customers all over the world.

## INCREASED ROI

Our experience and research indicate that purchase price and installation cost typically represent 8 percent of a flooring's life-cycle cost. Only 8 percent. That leaves a full 92 percent for cleaning and maintenance. iQ floors that do not require wax or finish lower cleaning and maintenance costs, which lead to increased ROI. Plus, there is less ongoing disruption for maintenance, adding to the overall productivity of the space. These are facts that any CFO can appreciate.



**Optima®**  
44 colors available



Number one performer around the world.

thickness = .080" (2 mm) roll width = 6'6" nominal (2 m) roll length = approximately 82'7" (25.17 m)  
tile size = 24" x 24" nominal (610 mm x 610 mm)



**827 Crunchy Granola**  
Roll | Tile  
Weldrod 1292443



**903 Spanish Turtle**  
Roll  
Weldrod 1287240



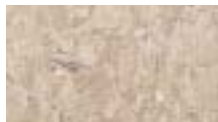
**886 Beluga**  
Roll | Tile  
Weldrod 1291609



**Granit™**  
24 colors available



thickness = .080" (2 mm) roll width = 6'6" nominal (2 m) roll length = approximately 82'7" (25.17 m)  
tile size = 24" x 24" nominal (610 mm x 610 mm)



**371 Mocha Swirl**  
Roll | Tile  
Weldrod 1292371



**379 Full Sail**  
Roll | Tile  
Weldrod 1292379

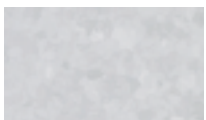


**381 Very Jade**  
Roll | Tile  
Weldrod 1292381

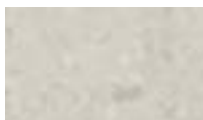
## Melodia & Aria Homogeneous Sheet Flooring

A subtle, tonal pattern in a wide range of 40 colors, **Melodia** is intended to coordinate with other interior finishes within a healthcare or education environment. It also works directly with **Aria**, 16 newly designed references which include unique accent granules to add depth to any space. The 56 color/design options are designed to work beautifully together. Melodia is a simple tone-on-tone design, for the areas of a facility that require a quiet visual pattern. Aria is a more complex visual design intended for areas with busier traffic patterns requiring a bit more contrast and camouflage.

### 40 Melodia colors available



**602 Gray Stone**  
Roll | Weldrod 1294680



**606 Alto**  
Roll | Weldrod 1287290

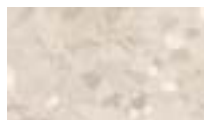


**616 Plaza**  
Roll | Weldrod 1287010



thickness = .080" (2 mm) roll width = 6'6" nominal (2 m) roll length = approximately 82'7" (25.17 m)  
tile size = 24" x 24" nominal (610 mm x 610 mm)

### 16 Aria colors available



**557 Cabana**  
Roll | Weldrod 1292319



**565 Blue Iris**  
Roll | Weldrod 1288334



**552 Windy City**  
Roll | Weldrod 1291811

For a view of the full line of Optima®, Granit™, Melodia & Aria solutions, please visit [Johnsonite.com](http://Johnsonite.com).

# Acczent® Wood

thickness = .080" (2 mm) roll length = approximately 76' (23.16 m)  
roll width = 6'6" nominal (2 m)

**09 65 00/JOH**  
**BuyLine 0822**



14 colors available

Acczent's 28 mil wear layer adds durability, while the Polyurethane (PUR)-reinforced construction can minimize maintenance.



**3003 Medium Beech**  
Roll  
Weldrod 1291205



**3005 Maple**  
Roll  
Weldrod 1291342



**6004 Rosewood Blush**  
Roll  
Weldrod 1291205



**3012 Rosewood**  
Roll  
Weldrod 1287008

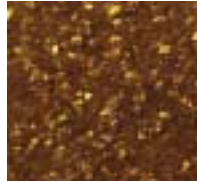
# Acczent® Glass

thickness = .080" nominal (2 mm) roll width = 6'6" nominal (2 m) roll length = approximately 76' (23.16 m)

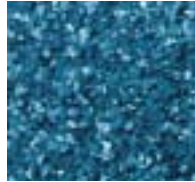
**STAINED ACCZENT GLASS** 8 colors available



**2004 Peanut Butter Smoothie**  
Roll  
Weldrod 1292101



**2005 Chocolate Crunch**  
Roll  
Weldrod 1287002

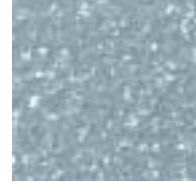


**2008 Midnight Shale**  
Roll  
Weldrod 1287001

**FROSTED ACCZENT GLASS** 6 colors available



**6004 Alabaster Green**  
Roll  
Weldrod 1291954



**6003 Blue Fish**  
Roll  
Weldrod 1291210



**2001 Shipwreck**  
Roll  
Weldrod 1287006

# Acczent® Steel

thickness = .080" nominal (2 mm)  
roll width = 6'6" nominal (2 m)  
roll length = approximately 76' (23.16 m)



**5001 Grey** Roll  
Weldrod 1291542



# I.D. Moduline Wood

20 colors available

thickness = .100" (2.5 mm) plank width = see individual pattern for availability plank length = approximately 39.25" (1 m)

Combine the rich looks of wood, stone, aluminum and other contemporary materials to this PUR-reinforced wear layer floor.



**6001 Maple 3.25" Plank**



**7013 Doussie 6.5" Plank**



**7015 Oriental Plum 6.5" Plank**



**6008 Mahogany 3.25" Plank**



**7014 Golden Cherry 6.5" Plank**



**9002 Light Weathered Oak 6.5" Plank**

# I.D. Moduline UNI

8 colors available



**5002 Acid Green Tile**



**5003 Impulse Yellow Tile**



**5009 Pink Emotion Tile**



**5007 Eclectic Blue Tile**

thickness = .100" (2.5 mm) tile size = 19.68" x 19.68" nominal (500 mm x 500 mm)

# I.D. Moduline Metallics

thickness = .100" (2.5 mm) tile size = 19.68" x 19.68" nominal (500 mm x 500 mm)

All 4 patterns shown



**5028 Steel Tile**



**6001 Hammered Silver Tile**



**5001 Aluminum Tile**



**7001 Natural Slate Tile**

# I.D. Moduline Cements

All 5 patterns shown



**5024 Concrete Tile**



**5025 Ecu Stone Tile**



**5027 Beige Stone Tile**



**5023 Light Concrete Tile**



**5026 Sand Stone Tile**

thickness = .100" (2.5 mm)  
tile size = 19.68" x 19.68"  
nominal (500 mm x 500 mm)

For a view of the full line of Acczent® Finishes and I.D. Moduline solutions, please visit [Johnsonite.com](http://Johnsonite.com).

# Resilient Modular Tile

Square is a high-performance resilient tile that uses releasable adhesive and can be repurposed as easily as carpet tiles. When paired with rePLACE, the leading demountable wall base, you get a truly modular flooring system. So you can change out a room in hours, not days. Square's extremely durable Polyurethane

(PUR)-reinforced wear layer contributes to its long life and its ability to better resist abrasions, stains and tearing.

Best of all, Square is a modular flooring that requires less subfloor preparation, is easy to install and easy to clean. A savings of 30 percent in maintenance costs can be expected.



For a view of the full line of Square Malaga, Palma, Patine, Silk and Wood solutions, please visit [Johnsonite.com](http://Johnsonite.com).

## Square Malaga

5 colors available



2005 Carnival Tile



3001 Cobblestone Tile



2002 Holiday Tile

## Square Palma

9 colors available



9011 Pecan Sundae Tile



9008 Metal Bucket Tile



9017 Foliage Tile

## Square Patine

4 colors available



9004 Leather Strap Tile



9002 Grey Tuxedo Tile



9006 Ottoman Blue Tile

## Square Silk

Both available colors shown.



9023 Grey Beach Tile



9024 Dry Brush Tile

## Square Wood

Both available colors shown.



0002 Oak Tile



0001 Teak Tile

FOR ALL SQUARE PRODUCTS: thickness = .188" (4.70 mm) tile size = 19.68" x 19.68" nominal (500 mm x 500 mm)

## rePLACE. It's about time.

U.S. Patent No. 6,122,872

Change rooms faster. Repair high-abuse areas quickly. Reduce downtime. Protect the environment. Increase return on investment.

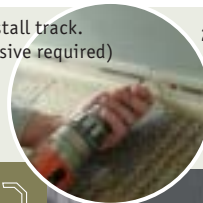
- All rePLACE profiles and track available in standard 4' lengths
- Ideal for tenant improvement projects with tight budgets and time tables
- Removability permits reuse of product after remodeling
- Damaged sections can be easily replaced
- Track and base can be removed and reused
- Inside and outside corners and end stops available
- Traditional and contemporary profiles
- No adhesives improves indoor air quality
- Return rePLACE once you are finished with it. As part of RESTART, our reclamation program, we'll recycle it and keep it out of landfills

\*Check local building codes.

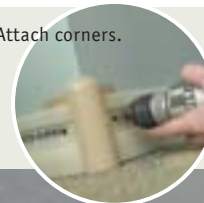
Available in Color Palette A plus 08, 50, 66, 68, 79, 129, 130. Please see Johnsonite Story for details.

For a view of the full line of rePLACE® solutions, please visit [Johnsonite.com](http://Johnsonite.com).

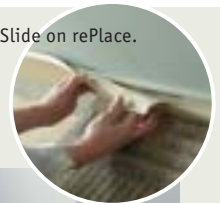
1. Install track. (No adhesive required)



2. Attach corners.



3. Slide on rePlace.





09 65 00/JOH  
BuyLine 0822

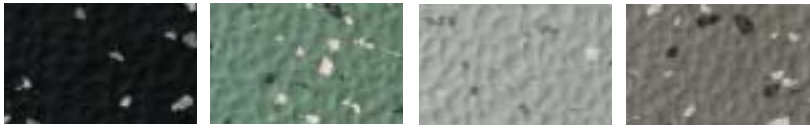


# Triumph and Inertia™ floor score

Triumph thickness = 3/8" (9.5 mm) Inertia thickness = 1/4" (6.35 mm)

## STANDARD SPECKLED

12 colors available



733 Molten

730 Timberline

731 Altitude

732 Tundra

## 22 SOLID COLORS\* (ALSO AVAILABLE FOR REPLAY)



148 Paprika

18 Navy Blue

38 Pewter

40 Black

70 Bluest

55 Silver Grey

63 Burnt Umber

80 Fawn

20 Charcoal

29 Moon Rock

46 Empire Green

49 Beige

58 Windsor Blue

59 Heather Green

86 Hunter Green

134 Gold Rush

45 Sandalwood

48 Grey

61 Brick

143 Marine

144 Blueprint

142 Aquatic

\*Other solid colors available by special request. For available colors, reference color palettes A and B.

UnderLock available as standard in speckled and special order in solid.

TRIUMPH PATTERN	Thickness	Speckled	Prima Marbleized and Olio	Solid Colors
■ Square Edge 24" x 24"	3/8"	All colorways available	SO	All 22 Solid Colors available**
■ Interlocking 23.5" x 23.5"	3/8"	Six colorways available*	SO	SO
■ UnderLock 25.5" x 25.5"	3/8"	All colorways available	SO	SO

INERTIA PATTERN	Thickness	Speckled	Prima Marbleized and Olio	Solid Colors
■ Square Edge 24" x 24"	1/4"	All colorways available	SO	All 22 Solid Colors available**
■ Interlocking 23.5" x 23.5"	1/4"	SO	SO	SO
■ UnderLock 25.5" x 25.5"	1/4"	All colorways available	SO	SO

Matching accessories available in solid colors (not skate- and spike-resistant). Visit [johnsonite.com](http://johnsonite.com).  
STD = Standard SO = Special Order

\*\*See [Johnsonite.com](http://Johnsonite.com) for details.

## TRIUMPH

Triumph performs where ordinary flooring simply cannot. Engineered for extreme conditions, 3/8-inch thick Triumph is a durable, spike-, skate- and slip-resistant rubber tile. Designed to bear the brunt of constant foot traffic, sports activities, heavy rolling and static abuse from objects like sporting equipment, Triumph can also absorb more of the noise generated in these types of environments.

## INERTIA™

When extreme activity involving spikes, skates or free weights is not an issue, 1/4-inch thick Inertia™ can be a more affordable alternative to Triumph. While they differ functionally, Triumph and Inertia are identical aesthetically, allowing you to blend the two to create seamless, high-performance environments that meet your needs as well as your budget.

# Triumph and Inertia UnderLock™

## A PORTABLE PROFILE FOR TRIUMPH AND INERTIA.

A clever locking – and unlocking – installation system makes UnderLock™ an ideal solution in many sports and multi-functional applications where Triumph or Inertia flooring lines are specified. Requiring no adhesives, tiles with the UnderLock profile simply fit together, almost like a puzzle, making them totally portable, yet suitable for both temporary and permanent installations.

Never before has installation been such a snap. In fact, anyone can put UnderLock tiles together easily – even over uncured concrete slabs. Changing out damaged tiles is also a breeze. For a more seamless finished appearance, choose darker colors for their high seam-hiding ability. Or, consider creating a checkerboard or geometric design when selecting colors in the lighter range.

For a view of the full line of Triumph, Inertia™ and UnderLock™ solutions, please visit [Johnsonite.com](http://Johnsonite.com).



### HOW TO ORDER:

Specify: Triumph SMHU – (color number),  
Specify: Inertia INRHU – (color number)

### Please note:

While Triumph in Square Edge or Interlocking tiles can be applied where skates or spikes are used, we do not recommend Triumph UnderLock in these applications.



# Replay<sup>®</sup> Reaction<sup>®</sup> and Fusion<sup>™</sup>

## STANDARD REACTION COLORWAYS

6 standard colorways with 22 Decorative Solid Color tiles to use as accents or borders are available.



501 Mercury



502 Constellation



504 Jungle

## STANDARD FUSION COLORWAYS

7 standard colorways with 22 Decorative Solid Color tiles to use as accents or borders are available.



735 Chrome



736 Blue Ice



734 Tanglewood

For a view of the full line of Replay<sup>®</sup> Reaction<sup>®</sup> and Fusion<sup>™</sup> solutions, please visit [Johnsonite.com](http://Johnsonite.com).

A winning solution for many applications, Replay<sup>®</sup> is resistant to golf spikes, ice skate blades, barbells, baseball cleats and more. What sets it apart is that it's molded from recycled rubber tires, making it a more economical, environmentally conscious solution that doesn't compromise on performance. Easy to install and easy to maintain, Replay has a lightly textured surface and is available in Interlocking tiles for loose-lay applications, square tiles for permanent placement or rolls for more seamless installations.

		THICKNESS	1/4"	3/8"	1/2"
■ Square Edge Tile	Fusion	S0	STD	S0	S0
	Reaction	S0	STD	S0	S0
■ Interlocking Tiles	Fusion	S0	STD	S0	S0
	Reaction	S0	STD	S0	S0
📦 Rolls	Fusion	STD 75'	STD 50'	S0 50'	S0 50'
	Reaction	STD 75'	STD 50'	S0 50'	S0 50'



# Amerisport<sup>®</sup>

Available in 8 solid colors and 2 wood tones

Amerisport thickness = .301" (7.65 mm) Training thickness = .197" (5 mm)  
roll width = 6'6" nominal (2 m) roll length = approximately 67' (20.42 m)



Golden Maple  
2002 Amerisport  
9002 Training  
Roll  
Weldrod 1285368



Beech  
2001 Amerisport  
9001 Training  
Roll  
Weldrod 1285363

**Amerisport** is a unique vinyl flooring solution specially designed for indoor sports activities, offering the perfect balance of energy return, shock absorption and value. In compliance with NCAA basketball regulations for bounce, rebound and hardness, it's ideal for use in indoor gyms, health clubs and basketball courts.

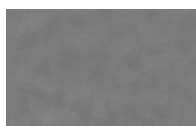
**Training** - All areas in a fitness center or health club are not created equal - or have the same high-performance requirements. For instance, hallways, reception areas or meeting rooms. Training is a heavy-duty vinyl flooring which is engineered to provide many years of dependable performance with minimal maintenance.

# Training<sup>®</sup>

Available in 8 solid colors and 2 wood tones



Orange  
1012 Amerisport  
8012 Training  
Roll  
Weldrod 1285365



Grey  
1009 Amerisport  
8009 Training  
Roll  
Weldrod 1285808



Field Green  
1002 Amerisport  
8002 Training  
Roll  
Weldrod 1285183



Red  
1011 Amerisport  
8011 Training  
Roll  
Weldrod 1285139

For a view of the full line of Amerisport<sup>®</sup> and Training<sup>®</sup> solutions, please visit [Johnsonite.com](http://Johnsonite.com).

# ComforTech® Rubber Sheet

09 65 00/JOH  
BuyLine 0822

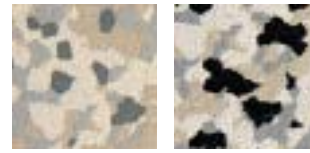
When it comes to comfort, life safety and ROI, nothing works harder than ComforTech®. With a cushioned inner layer, it's ideal in environments where people are on their feet all day, helping reduce fatigue, as well as costly slip/fall accidents. ComforTech high-performance flooring is always a safer, more comfortable choice.

**ANTHEM** thickness = .080" (2 mm) roll width = 55" nominal (1.4 m)  
roll length = approximately 49'3" (15 m)

**SOLID COLOR CHECKER** thickness = .118" (3 mm) roll width = 54" nominal (1.37 m)  
roll length = approximately 32'10" (10 m)

## ANTHEM® COLLECTION

15 patterns available



426 Old Faithful

412 Rocky Mountain

## SOLID COLOR CHECKER COLLECTION

10 colors available



18 Navy Blue

20 Charcoal

# Acczent® Comfort

Five wood patterns are available in a Comfort version. The thick construction increases the acoustic qualities of Acczent® while adding comfort underfoot.

thickness = .13" (3.3 mm) roll width = 6'6" nominal (2 m)  
roll length = approximately 76' (2 m) Impact sound insulation = 19 db

## 5 wood patterns available



**9001 Maple**  
Roll  
Weldrod 1291342

**9002 Medium Beech**  
Roll  
Weldrod 1291205

**9005 Rosewood**  
Roll  
Weldrod 1287008



# Linoleum xf™ Acoustic



thickness = .160" (4 mm) roll width = 6'6" nominal (2 m)  
roll length = approximately 65'-100' (19.8 m-30.5 m)  
Impact sound insulation = 14 db

## 6 patterns available



**Veneto | 616 Feldspar**  
Roll | Weldrod 1750313

**Veneto | 600 Limestone**  
Roll | Weldrod 1750622

**Veneto | 663 Lighthouse**  
Roll | Weldrod 1750660



Linoleum xf™ Acoustic helps absorb noise and cushions the impact on joints and backs.

# Granit™ Acoustiflor



thickness = .160" (4 mm) roll width = 6'6" nominal (2 m)  
roll length = approximately 82.7' (25.2 m)  
Impact sound insulation = 17db

## 8 patterns available



**770 Soft Fleece**  
Roll  
Weldrod 1288255

**370 White Sand**  
Roll  
Weldrod 1292370

**382 Yoga**  
Roll  
Weldrod 1291811

**383 Homing Pigeon**  
Roll  
Weldrod 1292383

Granit Acoustiflor® is also available in select patterns, and it includes an added layer to absorb more noise and reduce the impact on joints and backs.

# Electrostatic Granit AS



thickness = .080" (2 mm)  
roll width = 6'6" nominal (2 m)  
roll length = approximately 82' (25 m)  
tile size = 24" x 24" nominal (610 mm x 610 mm)

## STATIC DISSIPATIVE FLOORING 6 patterns available

Granit AS is a high-performance, homogeneous, permanently static dissipative resilient flooring that provides more than just an aesthetic appearance. It brings peace of mind that electrical charges will be dissipated throughout its lifetime.



**790 Gravel Road**  
Roll | Tile\*  
Weldrod 1291821

**792 Heavy Fog**  
Roll | Tile\*  
Weldrod 1292767

**794 Country Sage**  
Roll | Tile\*  
Weldrod 1291794

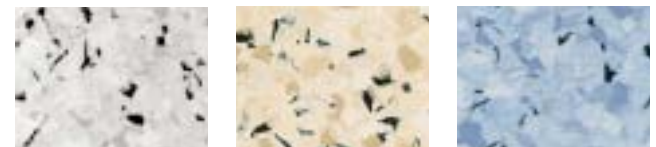
# Toro EL



thickness = .080" (2 mm)  
roll width = 6'6" nominal (2 m)  
roll length = approximately 82' (25 m)  
tile size = 24" x 24" nominal (610 mm x 610 mm)

## 9 patterns available CONDUCTIVE FLOORING

Flooring can be a critical element wherever electronic devices are produced, repaired, stored or used. For instance, telecommunication centers, operating rooms, explosives manufacturing and other areas where conductivity is a concern. Toro EL has low electrical resistance (10<sup>4</sup> to 10<sup>6</sup> ohms), making it a safer, aesthetically pleasing choice.



**118 Country Road**  
Roll | Tile  
Weldrod 1292801

**112 First Snow**  
Roll | Tile\*  
Weldrod 1292465

**116 Spring Sky**  
Roll | Tile\*  
Weldrod 1288170

\* Standard non-stock item available in full cartons (tile). Call for availability.

For a view of the full line of ComforTech®, Acczent® Comfort, Linoleum xf™ Acoustic, Granit™ Acoustiflor and AS, and Toro EL solutions, please visit Johnsonite.com.

# Safe-T Sheet™

thickness = .080" (2mm) roll width = 6'6" nominal (2 m)  
roll length = approximately 75'6" (23 m)

10 colors available



136 Wing Tip  
Roll | Weldrod 1289136



133 Green Eyes  
Roll | Weldrod 1289133

Safe-T Sheet™ is specially designed for superior slip resistance. Its unique homogeneous construction includes colors, patterns and traction-enhancing aluminum granules that are dispersed throughout the flooring.



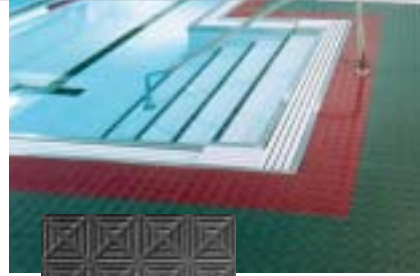
Specially designed for superior slip resistance

# Safety Stride®

SOLID VINYL FLOORING SYSTEM

Safety is the main priority with Safety Stride®, the high-performance choice for locker and shower rooms, pool and spa decks, kitchens\* and restaurants,\* or wherever you want to improve foot traction in wet or dry conditions. Safety Stride's patented pyramid-and-duct pattern keeps low-volume spills below foot level.

\* Check local codes for using raised profile designs in commercial kitchens and food preparation areas.

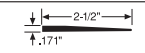
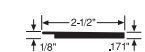
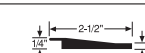
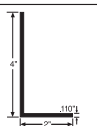


thickness = .171" (4.3 mm)  
tile size = 12" x 12"  
(305 mm x 305 mm)

Available in Color Palette A. Please see Johnsonite Story for details.

For a view of the full line of Safe-T Sheet™ and Safety Stride® solutions, please visit Johnsonite.com.

## SAFETY STRIDE ACCESSORIES

TYPE	PROFILE	DESCRIPTION
SST-XX-A Transition		Safety Stride to floor. Tapered reducer.
SST-XX-B Transition		Safety Stride to 1/8" material.
SST-XX-C Transition		Safety Stride to 1/4" or 5/16" material.
SB-XX Wall Base		Sanitary Wall Base for Safety Stride.

# Defiant™ Oil and Grease Resistant Rubber Tile



6 SOLID COLOR TILES



40 Black B    86 Hunter Green    18 Navy Blue



Hammered Texture    Raised Round Texture

STANDARD SPECKLED COLORWAYS

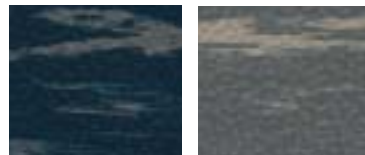
6 colors available



729 Thickett CB    732 Tundra WG

STANDARD PRIMA MARBLEIZED COLORWAYS

4 colors available



295 Hazy    296 Misty WG

Defiant™ tiles are engineered to work most anywhere petroleum products, animal fats and vegetable oils are present. It meets ASTM specifications D-471 for Oil and Grease Resistance and F-925 for Chemical Resistance to assure you the best protection available. Defiant requires no additional waxing or sealing and helps prevent slips and falls.

Defiant is also available in stair treads as special order.



For a view of the full line of Defiant™ solutions, please visit Johnsonite.com.

# Floor Keeper

thickness = 1/2" (12.7 mm) and 3/4" (19.1 mm)  
mat width = 19-5/8" nominal (498.5 mm) mat length = approximately 78-3/4" (2 m)

U.S. Patent No. 5,529,825



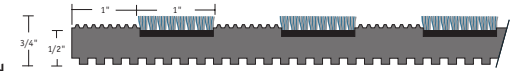
Floor Keeper is a high-performance solution designed exclusively for use in air-lock environments and interior entrances. Its patented ribbed rubber design and nylon fibers quietly scrape, absorb and conceal dirt and moisture, trapping them below foot level for evaporation or removal. Floor Keeper also helps to prevent expensive slip/fall accidents and control maintenance costs.

9 colors available



Steel    Turf    Lava

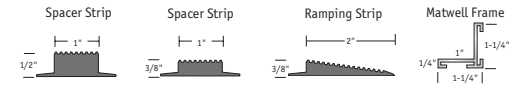
FLOOR KEEPER 3/4" Matting for recessed application in standard matwell frames



FLOOR KEEPER 1/2" Matting for surface-mounted application or shallow frames



ACCESSORIES



# Terra-Turf® Recycled Tile

thickness = 3/8" (9.5 mm) roll width = 12" nominal (305 mm)  
roll length = approximately 25' (7.6 m)  
tile size = 12" x 12" nominal (305 mm x 305 mm)

A rugged flooring designed for ramps and entrances, Terra-Turf® is made from post-consumer recycled tires and will not shrink or delaminate.



Available in black/brown

For a view of the full line of Floor Keeper and Terra Turf® solutions, please visit Johnsonite.com.



# Safe-T-First™ Photoluminescent Egress Routing System

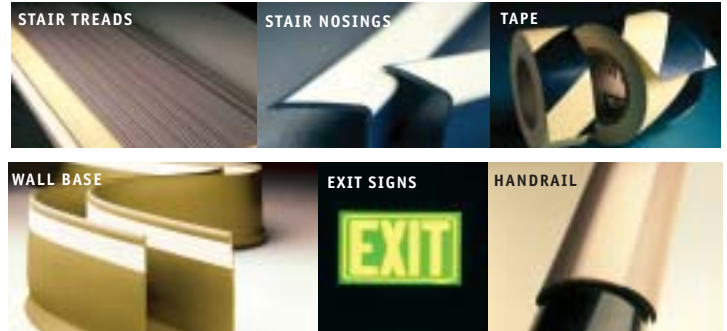


09 65 00/JOH  
BuyLine 0822

Create a non-electrical, low-location egress route by integrating photoluminescent technology into Johnsonite's fully integrated high-performance system.



For a view of the full line of Safe-T-First™ solutions, please visit Johnsonite.com.

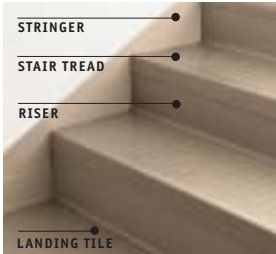


## Rubber Stair Treads



### TWO TREAD STYLES

Tread without Integrated Riser  
Integrated Tread/Riser



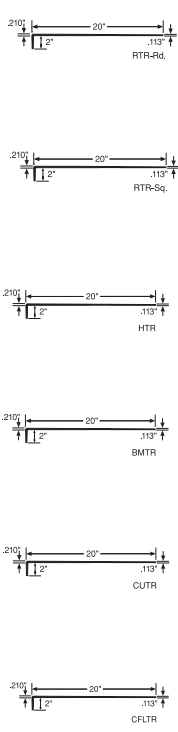
Johnsonite standard treads with integrated riser are available with contrasting inserts to satisfy California Title 24 requirements and ADA recommendations for the visually impaired.

### RUBBER TREAD WITH INTEGRATED RISER

### RUBBER TREAD WITH INTEGRATED RISER FOR THE VISUALLY IMPAIRED

	Raised Round Tread/Riser (RTR-RD) A B ▲ ★ Z *
	Raised Square Tread/Riser (RTR-SQ) A B ▲ ★ Z *
	Hammered Tread/Riser (HTR) A B ▲ ★ Z *
	Bamboo Tread/Riser (BMTR) A B ▲ ★ X *
	Cubis Tread/Riser (CUTR) A B ▲ ★ X *
	Fast Lane Tread/Riser (CFLTR) A B ▲ ★ X *

	Raised Round Tread/Riser Visually Impaired (VIRTR-RD) A B ▲ ★ ✖ Z *
	Raised Square Tread/Riser Visually Impaired (VIRTR-SQ) A B ▲ ★ ✖ Z *
	Hammered Tread/Riser Visually Impaired (VIHTR) A B ▲ ★ ✖ Z *
	Bamboo Tread/Riser Visually Impaired (VIBMTR) A B ▲ ★ ✖ X *
	Cubis Tread/Riser Visually Impaired (VICUTR) A B ▲ ★ ✖ X *
	Fast Lane Tread/Riser Visually Impaired (VICFLTR) A B ▲ ★ ✖ X *



### COLOR PALETTE AVAILABILITY

- A = Color palette A. See color guide for details. Plus 15 Cabernet and 132 Espresso in Vinyl Stair Treads and Stairwell Accessories
- B = Color palette B. See color guide for details.
- = Standard Speckled colorways. See page 23 for choices.
- ▲ = Can be specially ordered in Prima Marbleized and Prima Olivo colorways. Minimums may apply.
- ★ = Can be specially ordered in Speckled colorways.

### STAIR TREAD INSERT COLOR COMBINATIONS

- ⊕ = See chart on page 14 for recommended contrasting color combinations.
- ✖ = See chart on page 14 for recommended contrasting color combinations.

### SIZES / AVAILABLE LENGTHS

- W = 3', 3.5', 4', 6', 8', 12'
- X = 3', 3.5', 4', 4.5', 5', 6'
- Y = 3', 3.5', 4', 4.5', 5', 6', 7', 8'
- Z = 3', 3.5', 4', 4.5', 5', 6', 7', 8', 9'
- \* = Hinged nose for angled steps.

### STANDARD RUBBER TREADS

	Raised Round Tread (RH-RD) A B ▲ ★ Y *	
	Raised Square Tread (RH-SQ) A B ▲ ★ X *	
	Heavy Duty Smooth Tread (GS) A B X	
	Service Weight Tread (S) A B X	
	Heavy Duty Diamond Tread (C) A B X *	
	Sur-Grip Tread (SG) A B X	
	Service Weight Safe-T-Grip Tread (SA) A B X	
	Heavy Duty Safe-T-Grip Tread (G) A B X	

SPECIALTY APPLICATION FLOORING STAIRWELL MANAGEMENT

# Rubber Stair Treads continued

## VISUALLY IMPAIRED COLOR SOLUTIONS

### STANDARD RUBBER TREADS FOR THE VISUALLY IMPAIRED



**Raised Round Tread Without Riser Visually Impaired (VIRH-RD)**



**Raised Square Tread Without Riser Visually Impaired (VIRH-SQ)**



**Heavy Duty Smooth Tread Visually Impaired (VIG)**



**Service Weight Tread Visually Impaired (VIS)**



**Heavy Duty Diamond Tread Visually Impaired (VIC)**



**Sur-Grip Tread Visually Impaired (VISG)**



### PRIMA MARBLEIZED RUBBER INSERT

INSERT COLOR	TREAD COLOR
	18 Navy Blue
	20 Charcoal
	40 Black
	47 Brown
	48 Grey
	49 Beige
	55 Silver Grey
	59 Heather Green
	80 Fawn
	85 Burgundy

For a view of the full line of Rubber Stair Tread solutions, please visit [Johnsonite.com](http://Johnsonite.com).

### GRIT TAPE COLOR

	Black		Tan
	Brown		Yellow
	Grey		White

**Black Grit Tape** contrasts with colors 01, 05, 12, 21, 24, 28, 29, 31, 32, 38, 41, 48, 55, 58, 59, 62, 64, 71, 75, 84, 121, 128, 129, 134, 163, 185, 187, 584, 585, 586, 587, 588, 711, 715, 716, 717, 718, 719, 720, 721, 722, 724, 726

**Brown Grit Tape** contrasts with colors 09, 11, 22, 33, 34, 42, 45, 49, 60, 80, 125, 130, 712, 713, 728

**Grey Grit Tape** contrasts with colors 06, 15, 18, 20, 30, 40, 72, 73, 85, 86, 92, 148, 152, 162, 164, 168, 583, 589, 709, 710, 714, 723, 727

**Tan Grit Tape** contrasts with colors 47, 63, 76, 132, 725

**Yellow Grit Tape** contrasts with colors 70, 74

**White Grit Tape** available by special order

**Photoluminescent Tape** available by special order

### SOLID COLOR RUBBER INSERT

	40 Black		55 Silver Grey
	47 Brown		75 Lemon
	49 Beige		85 Burgundy

**40 Black Insert** contrasts with colors 01, 05, 12, 21, 24, 28, 29, 31, 32, 38, 41, 48, 55, 58, 59, 62, 64, 71, 75, 84, 121, 128, 129, 134, 163, 185, 187, 584, 585, 586, 587, 588, 711, 715, 716, 717, 718, 719, 720, 721, 722, 724, 726

**47 Brown Insert** contrasts with colors 09, 11, 22, 34, 42, 45, 49, 80, 130, 712, 713, 728

**49 Beige Insert** contrasts with colors 47, 63, 76, 132, 725

**55 Silver Grey Insert** contrasts with colors 06, 15, 18, 20, 30, 40, 72, 73, 85, 86, 92, 148, 152, 162, 164, 168, 583, 589, 709, 710, 714, 723, 727

**75 Lemon Insert** contrasts with colors 70, 74

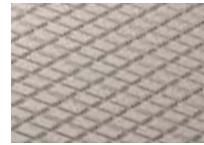
**85 Burgundy Insert** contrasts with colors 33, 60, 125

### LANDING TILE

All tiles available in 24" x 24". Smooth is also available in 12" x 12".



Smooth (C)



Diamond (C)

All tile textures can be used as landing tile.

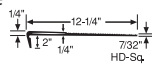
# Vinyl Stair Treads

## VISUALLY IMPAIRED COLOR SOLUTIONS

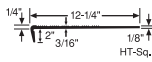
### VINYL TREADS



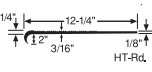
**Heavy Duty Square Nose (HD)**



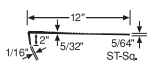
**Safe-T-Rib Square Nose (HT)**



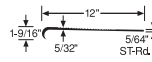
**Safe-T-Rib Round Nose (HT)**



**Service Weight Square Nose (ST)**



**Service Weight Round Nose (ST)**



### VINYL TREADS FOR THE VISUALLY IMPAIRED



**Heavy Duty Square Nose Visually Impaired (VIHD)**



**Safe-T-Rib Square Nose Visually Impaired (VIHT)**



**Safe-T-Rib Round Nose Visually Impaired (VIHT)**



**Safe-T-Grip Square Nose Visually Impaired (VIVG)**



### RUBBER LANDING TILE FOR USE WITH VINYL STAIR TREADS



Tiles available in 24" x 24" and in 12" x 12".

Smooth (C)

All tile textures can be used as landing tile.

### GRIT TAPE COLOR

	Black
	Brown
	Grey
	Tan
	Yellow
	White

**Black Grit Tape** contrasts with colors 01, 21, 24, 28, 29, 31, 32, 38, 41, 48, 55, 58, 59

**Brown Grit Tape** contrasts with colors 09, 22, 33, 34, 42, 45, 49, 60, 80

**Grey Grit Tape** contrasts with colors 15, 18, 20, 40, 71, 85, 86, 92

**Tan Grit Tape** contrasts with colors 47, 63, 76, 132

**Yellow Grit Tape** available by special order

**White Grit Tape** available by special order

### CO-EXTRUDED VINYL INSERT

	40 Black
	47 Brown
	49 Beige
	55 Silver Grey
	85 Burgundy

**40 Black Insert** contrasts with colors 01, 21, 24, 28, 29, 31, 32, 38, 41, 48, 55, 58, 59

**47 Brown Insert** contrasts with colors 09, 22, 34, 42, 45, 49, 80

**49 Beige Insert** contrasts with colors 47, 63, 76, 132

**55 Silver Grey Insert** contrasts with colors 15, 18, 20, 40, 71, 85, 86, 92

**85 Burgundy Insert** contrasts with colors 33, 60

**Photoluminescent Co-extruded Insert** available by special order

For a view of the full line of Vinyl Stair Tread solutions, please visit [Johnsonite.com](http://Johnsonite.com).

Please refer to the key on page 13 for all symbols on pages 13-15 of this catalog.

# Stairwell Accessories

\* Also available in 50 White.  
 ✓ Available without contrasting strip.

09 65 00/JOH  
 BuyLine 0822

STAIRWELL MANAGEMENT

## RUBBER STRINGERS AND RISERS

ITEM	SIZE	GAUGE
Stringers Solid Color	10" x 6"	.080"
Stringers Marbleized	10" x 6"	1/8"
Risers	6" x 4'	1/8"
	6" x 100"*	1/8"
	7" x 4'	1/8"
	7" x 5'	1/8"
	7" x 6'	1/8"
	7" x 50"*	1/8"



Stringers and risers are available in more than 50 standard solid colors. Speckled, Prima Marbleized or Prima Olio are available by special order.

\*Not available in Speckled or Marbleized.

## VINYL STRINGERS AND RISERS

ITEM	SIZE	GAUGE
Stringers	10" x 50"	.080"
Risers	6" x 4'	.080"
	6" x 120"	.080"
	7" x 4'	.080"
	7" x 50"	.080"



Vinyl stringers and risers are available to coordinate with vinyl or rubber treads in your choice of more than 30 colors including ColorMatch.

For a view of the full line of Stairwell Accessory solutions, please visit Johnsonite.com.



## TACTILE WARNING SURFACE



Reduce potential accidents by alerting the visually impaired that they're approaching hazardous areas. Detectable tactile warning surface meets ANSI A117.1-1986 design requirements and is available in 32 attractive solid colors. Permanently co-extruded contrasting striping can also be ordered.



## FLEXIBLE VINYL STAIR NOSINGS

Now it's easy to protect carpeting, resilient tile or sheet vinyl from worn edges. Choose from 13 popular profiles in more than 30 colors including ColorMatch. Or we can custom-match colors. To meet stringent accessibility requirements, choose permanently co-extruded contrasting striping.

## FLEXIBLE VINYL STAIR NOSINGS FOR THE VISUALLY IMPAIRED

VIRCN-XX-B A * ✓		1/8" material w/lip or 3/16" w/o lip. 2" co-extruded visually impaired strip.
VIRCN-XX-B2 A		1/8" material. 2" visually impaired grit tape insert.
VITSN-XX A		Top set with 2" co-extruded visually impaired strip.
VIRCN-XX-A A * ✓		1/4" or 5/16" material. 2" co-extruded visually impaired strip.
VIVCD-XX A * ✓		1/4" or 5/16" material for step and riser. 2" co-extruded visually impaired strip.

## SOLID COLOR FLEXIBLE VINYL STAIR NOSINGS

VDL-XX-RD A		1/8" material.
VDL-XX-SQ A		1/8" material.
RCN-XX-B A		1/8" material w/lip or 3/16" w/o lip.
DTN-XX A		Top set stair nosing for residential use.
RCN-XX-A A *		1/4" or 5/16" material.
VCD-XX A		1/4" or 5/16" material on step and riser.
SVCD-XX-A A		3/8" material on step and riser.
SRCN-XX-C A		3/8" material on step.



# Millwork® Wall Finishing System

## MILLWORK CONTOURED WALL BASE

Millwork offers the look of finely milled wood at roughly half the cost and installs in half the time.

OVERLOOK® MW-XX-C 7.5" H x .25" thick	ATTACHÉ MW-XX-E 6" H x .25" thick	DIPLOMAT® MW-XX-A 4.5" H x .375" thick	AMBASSADOR MW-XX-K 4" H x .375" thick	EMISSARY MW-XX-P 4.5" H x .585" thick	SILHOUETTE® MW-XX-J 4" H x .50" thick	OUTLINE® MW-XX-D 3.5" H x .313" thick
MONARCH MW-XX-M 6" H x .19" thick	ENVOY MW-XX-L 5.5" H x .75" thick	INFLECTION MW-XX-G 5.25" H x .375" thick	MANDALAY 4.5" MW-XX-H 6" MW-XX-H6 2.5" MW-XX-H25 all are .375" thick	REVEAL® 4.25" MW-XX-F 6" MW-XX-F6 both are .25" thick	EQUINOX MW-XX-R 4.5" H x .375" thick	OBLIQUE MW-XX-N 3" H x .375" thick

## COLOR PALETTE AVAILABILITY

- A = Color palette A
- B = Color palette B
- C = Color palette C
- D = Color palette D
- W = Available in Wall Art palette

- ◆ = Available in Selects Color Palette:  
 01 Snow White, 08 Icicle, 09 Clay, 11 Canvas, 20 Charcoal, 22 Pearl, 27 Mist, 34 Almond, 40 Black, 45 Sandalwood, 47 Brown, 49 Beige, 50 White, 57 Flaxen, 63 Burnt Umber, 66 Either Ore, 68 White Sand, 69 Sterling Silver, 76 Cinnamon, 79 Bone White, 80 Fawn, 129 Silk, 130 Sisal, 150 Wetlands, 167 Fudge, 194 Antique White and 00 (unfinished and ready to paint)

Colors other than standard available by special request.

For a view of the full line of Millwork solutions, please visit Johnsonite.com.

## MILLWORK ACCESSORIES

QUARTER ROUND  
QTR-XX-A  
QTR-XX-D  
A W + 08, 14, 15, 50, 60, 68, 129, 132, 00

SHOE MOULDING  
SHU-XX-A  
A W + 08, 14, 15, 50, 60, 68, 129, 132, 00

## MILLWORK CORNER GUARD

MILLWORK CORNER GUARD  
VBG-XX-C  
◆ + 14, 15, 16, 132

## MILLWORK CHAIR RAIL

FORTIS  
CHR-XX ◆

BASTION  
CHR-XX-B ◆

RAMPART  
CHR-XX-C ◆

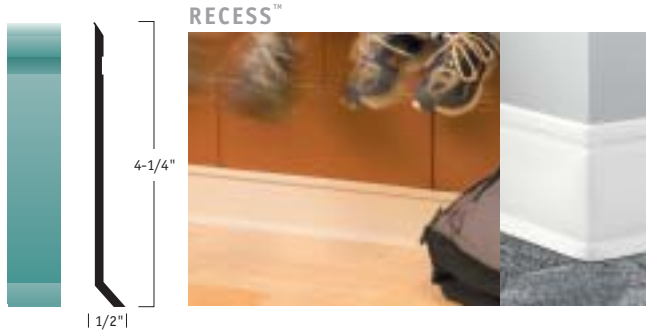
FINISHING BORDERS (WALL BASE)

## Traditional Wall Base Color palettes A+B+C

- 4' sections and 120' coils available
- Premanufactured inside and outside corners available
- Three standard heights: 2-1/2" (6.4 cm), 4" (10.2 cm) or 6" (15.3 cm)
- 4-1/2", 6", 8", 9" and 10" heights available by special order. Call for details
- Available in toe or toeless
- Available in rubber and vinyl
- Two thicknesses: 1/8" (3.2 mm) and .080" (2.0 mm)

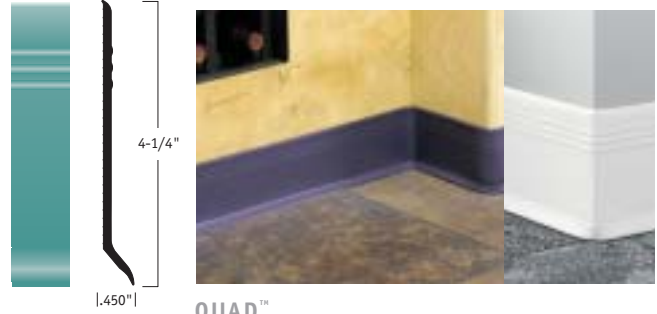


## Perceptions™ Color palettes A+B+C



- Durable rubber construction
- 4-1/4" height helps hide old glue lines
- Installs like traditional wall base
- Premanufactured inside and outside corners available
- Recess is available in: 4-1/4" toe base (standard) and 4-1/4" toeless base (special order)
- 120-lineal-foot rolls
- 4' sections by special order

### SPIRE™



### QUAD™



## TightLock® Wall Base Color palettes A+B+C+D

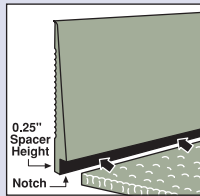
U.S. Patent No. 5,212,923

The patented TightLock® Wall Base System for carpet is designed to be installed before the flooring, for a tighter finished appearance. For resilient flooring, TightLock offers a sealed cove base look with a smaller lip.

- 4' sections or 75' coils
- Inside and outside corners available
- Clean, toeless look
- More than 140 colors and specialty finishes
- Easy to maintain
- Scuff and scratch resistant
- Low life-cycle cost

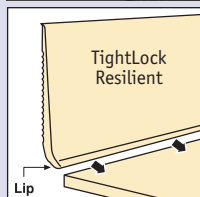
#### TightLock for carpet

- 3-1/4" (8.3 cm), 3" (7.6 cm) face
- 4-1/2" (11.4 cm), 4-1/4" (10.8 cm) face
- 6-1/2" (16.2 cm), 6-1/4" (15.9 cm) face



#### TightLock for resilient flooring

- 3-1/8" (7.9 cm), 3" (7.6 cm) face
- 4-3/8" (11.1 cm), 4-1/4" (10.8 cm) face
- 6-3/8" (16.2 cm), 6-1/4" (15.9 cm) face



\*Available without 1/4" spacer tab. (special order)

### TIGHTLOCK CARPET\*



### TIGHTLOCK RESILIENT







SILHOUETTE      REVEAL      OUTLINE      QUARTER ROUND      SHOE MOULDING

- Easy to maintain
- Scuff, scratch, nick and dent resistant
- Will not peel or crack
- Permanently impregnated pattern, not a laminate
- Preformed corners available for TightLock and Traditional base
- Designed to coordinate with I.D. Moduline, Accent and Square collections
- Standard profiles shown below

PLF Armor	LBE Light Beech	ACH Amber Cherry	MSA Baroque	MBE Medium Beech	POK Pin Oak
GGT Ironware	DBE Dark Beech	WAL Walnut	APT Medallion	LOK Light Oak	CRW Mission
SLF Silversmith	WOK Willow Oak	WEN Wenge Wood	BWG Balsa*	MOK Medium Oak	CWG Shaker*
NMP Natural Maple	DOK Dark Oak	GSM Bullion	*Not available for Millwork Silhouette, Reveal, Oblique and Outline profiles, as well as Quarter Round and Shoe Moulding.		

For a view of the full line of Wall Art™ Decorative Wall Base solutions, please visit [Johnsonite.com](http://Johnsonite.com).

## Floor Finishing Accessories

### TRANSITION SELECTOR CHART BY DIMENSION

For profile drawing and details, see specific accessory categories on pages 99-103.

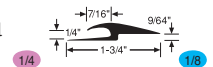
Gauge	Subfloor	1/16"	.080"	1/8"	.171"	3/16"	1/4"	5/16"	3/8"	1/2"	5/8"
Subfloor		SSR-XX-B RRS-XX-A	RRS-XX-B	SSR-XX-B RRS-XX-C RRS-XX-D	SST-XX-A	CRS-XX-C EG-XX-J	CRS-XX-A EG-XX-H EG-XX-K EG-XX-M CTA-XX-J CTA-XX-JL	EG-XX-G EG-XX-L EG-XX-M	CRS-XX-B EG-XX-W CTA-XX-P CTA-XX-PL	CRS-XX-D CTA-XX-Q	DPT-XX-FR
1/16"	SSR-XX-B RRS-XX-A							CTA-XX-D			
.080"	RRS-XX-B		CTA-XX-Y	SLT-XX-B RRS-XX-B CTA-XX-X			CTA-XX-HT SLT-XX-C		CTA-XX-Z		
1/8"	SSR-XX-B RRS-XX-C RRS-XX-D		SLT-XX-B RRS-XX-B CTA-XX-X	CTA-XX-N FS-XX-DW1 FS-XX-DW2 FS-XX-DW3	SST-XX-B		SLT-XX-A CTA-XX-H CTA-XX-HL CTA-XX-A CTA-XX-C CE-XX-A	CTA-XX-D CE-XX-A	CTA-XX-K	CD-XX-B	
.171"	SST-XX-A			SST-XX-B			SST-XX-C	SST-XX-C			
3/16"	CRS-XX-C EG-XX-J										
1/4"	CRS-XX-A EG-XX-H EG-XX-K EG-XX-M CTA-XX-J CTA-XX-JL		SLT-XX-C CTA-XX-HT	SLT-XX-A CTA-XX-H CTA-XX-HL CTA-XX-A CTA-XX-C CE-XX-A	SST-XX-C		CTA-XX-M CD-XX CD-XX-C CD-XX-W	CD-XX CD-XX-C CD-XX-W	CTA-XX-L CT-XX	CE-XX-C	
5/16"	EG-XX-G EG-XX-L EG-XX-M	CTA-XX-D		CTA-XX-D CE-XX-A	SST-XX-C		CD-XX CD-XX-C CD-XX-W	CD-XX CD-XX-C CD-XX-W	CCA-XX	CWA-XX	
3/8"	CRS-XX-B EG-XX-W CTA-XX-P CTA-XX-PL		CTA-XX-Z	CTA-XX-K			CTA-XX-L CT-XX	CCA-XX		CE-XX-C	
1/2"	CRS-XX-D CTA-XX-Q			CD-XX-B			CE-XX-C	CWA-XX	CE-XX-C	CD-XX-A	
5/8"	DPT-XX-FR										

### DIMENSIONS BY COLOR

1. Identify thickness of materials to be transitioned.
2. Find the corresponding color to match the thicknesses.
3. Find your colors together in any profile below.

● 0 = 0"      ● 1/16 = 1/16"      ● .080 = .080"  
● 1/8 = 1/8"      ● .171 = .171"      ● 3/16 = 3/16"  
● 1/4 = 1/4"      ● 9/32 = 9/32"      ● 5/16 = 5/16"  
● 3/8 = 3/8"      ● 1/2 = 1/2"      ● 5/8 = 5/8"

Example: 1/4" ● material to 1/8" ● material.



Can't find a transition to meet your needs? Call your Johnsonite representative and ask about getting a custom transition made for you.

For a view of the full line of Floor Finishing Accessory solutions, please visit [Johnsonite.com](http://Johnsonite.com).



# Floor Finishing Accessories

FINISHING ACCESSORIES

## TRACK BASE

<b>CDB-00-A</b> Rigid Vinyl		Pinless for glue-down installation. Neutral color only.
<b>MT-00-A</b> Aluminum		Pinless for glue-down installation.
<b>MT-00-B</b> Aluminum		Pin type for stretch-in installation.
<b>MTC-00-A</b> Aluminum		Pinless for glue-down installation. Minimum contour radius 6'.
<b>MTC-00-B</b> Aluminum		Pin type for stretch-in installation. Minimum contour radius 6'.

## EXPANSION JOINT SEALS

<b>EJS-XX</b>		1-1/2" wide expansion joint strip for resilient materials.
<b>EJS-XX-B</b>		3" wide expansion joint strip for resilient materials.

U.S. Patent No. 5,888,017

## T MOULDINGS

<b>CE-XX-A</b>		1/4" or 5/16" to 1/8" material. 1/4" leg.
<b>CE-XX-C</b>		1/2" to 1/4" or 3/8" material. 1/2" leg.
<b>CD-XX</b>		1/4" or 5/16" to 1/4" or 5/16" material. 1/4" leg.
<b>CD-XX-A</b>		1/2" to 1/2" material. 1/2" leg.
<b>CD-XX-B</b>		1/2" to 1/8" material. 1/2" leg.
<b>CD-XX-C</b>		1/4" or 5/16" to 1/4" or 5/16" material. 1/4" leg.
<b>CD-XX-W</b>		1/4" or 5/16" to 1/4" or 5/16" material. 1/4" leg.

## ADAPTORS

<b>CTA-XX-A</b>		1/4" to 1/8" material.
<b>CTA-XX-C</b>		1/4" to 1/8" material.
<b>CTA-XX-D</b>		5/16" to 1/16" or 1/8" material.
<b>CCA-XX</b>		3/8" to 5/16" material.
<b>CWA-XX</b>		1/2" to 5/16" material.



EXPANSION JOINT SEALS

## REDUCERS

<b>CRS-XX-A</b>		1/4" material to floor.
<b>CRS-XX-B</b>		3/8" material to floor.
<b>CRS-XX-C</b> 50' roll		3/16" material to floor.
<b>CRS-XX-D</b>		1/2" material to floor.
<b>SSR-XX-B</b> 35' roll		1/16" or 1/8" material to floor.
<b>RRS-XX-A</b> 3' pieces		1/16" material to floor.
<b>RRS-XX-B</b> 3' pieces		.080" material to floor.
<b>RRS-XX-C</b> 3' pieces		1/8" material to floor.
<b>RRS-XX-D</b> 25' roll		1/8" material to floor.



REDUCERS

## SLIM LINE TRANSITIONS

<b>SLT-XX-A</b>		1/4" to 1/8" material.
<b>SLT-XX-B</b>		.080" to 1/8" material.
<b>SLT-XX-C</b>		.080" to 1/4" material.

## COVE FILLER STRIPS

<b>CFS-00</b>		1-3/4" radius. Neutral only.
<b>CFS-00-A</b>		1-1/4" radius. Neutral only.
<b>CFS-00-M</b> 5' pieces		1" radius. Neutral only.

## WHEELED TRAFFIC TRANSITIONS

<b>CTA-XX-H</b>		1/4" to 1/8" material.
<b>CTA-XX-HL</b>		1/4" to 1/8" material.
<b>CTA-XX-HT</b>		1/4" to .080" or 2 mm material.
<b>CTA-XX-J</b>		1/4" material to floor.
<b>CTA-XX-JL</b>		1/4" material to floor.
<b>CTA-XX-K</b>		3/8" to 1/8" material.
<b>CTA-XX-L</b>		3/8" to 1/4" material.
<b>CTA-XX-M</b>		1/4" to 1/4" material.
<b>CTA-XX-N</b>		1/8" to 1/8" material.
<b>CTA-XX-P</b>		3/8" material to floor.
<b>CTA-XX-PL</b>		3/8" material to floor.
<b>CTA-XX-Q</b>		1/2" material to floor.
<b>CTA-XX-X</b>		.080" to 1/8" material.
<b>CTA-XX-Y</b>		.080" to .080" material.
<b>CTA-XX-Z</b>		.080" to 3/8" material.

U.S. Patent No. 5,581,967

## COVE CAPS

<b>SCC-XX-A</b>		For 1/8" materials.
<b>SCC-XX-B</b>		For 1/8" materials.
<b>CCC-XX-A</b>		For 1/4" or 5/16" materials.
<b>CCC-XX-B</b>		9/32" inside dimension.
<b>CCC-XX-C</b>		For 1/4" materials.
<b>CCC-XX-D</b>		For 3/16" materials.
<b>RCC-XX</b> 250' roll		For 1/4" or 5/16" materials.
<b>SCC-XX-D</b> with self-stick tape		For .080 materials.

## FLEXIBLE VINYL CORNER GUARDS

<b>VBG-XX-B-48</b> <b>VBG-XX-B-96</b> 4' or 8' pieces		Corner guard. 3/4" returns. 1/8" thick. Tapered ends.
<b>VBG-XX-A-48</b> <b>VBG-XX-A-96</b> 4' or 8' pieces		Corner guard. 1-1/2" returns. 1/8" thick. Tapered ends.
<b>VBG-XX-48</b> <b>VBG-XX-96</b> 4' or 8' pieces		Corner guard. 2-3/8" returns. 1/8" thick. Tapered ends.
<b>VBG-XX-C</b> 8' pieces		Milwork profile corner guard. 1/4" thick.

Also available in 68 White Sand and 79 Bone White  
Available in Selects Color Palette.

## CLEAR LEXAN CORNER GUARDS AND WALL PROTECTORS

<b>Available in 3/4" and 1-1/8" returns.</b>		4' and 8' lengths. Available in self-stick or with self-tapping nail screws.
<b>Available in 1-1/8", 1-1/2", 2" and 2-1/2" returns.</b>		4' and 8' lengths. Pre-drilled mounting holes and chrome screws.
<b>Available in 3" and 4" widths.</b>		Wall protector. 8' lengths. Fasten with screws provided.

Available in clear material only.



TRANSITIONS FOR LAMINATE FLOORING

## TRANSITIONS FOR LAMINATE FLOORING

<b>CD-XX-B1</b>		Flexible transition for laminate flooring to same height materials.
<b>DPT-XX-A</b>		Flexible transition for laminate to laminate flooring or laminate to same height materials.
<b>DPT-XX-B</b>		Flexible transition for laminate to carpet or resilient materials.
<b>DPT-XX-C</b>		Flexible track base for DPT-XX-A and DPT-XX-B profiles.
<b>DPT-XX-D</b>		Flexible edge to finish exposed laminate surfaces.
<b>DPT-XX-FR</b> 4' pieces		Flexible reducer for transitioning from 5/8" laminate to floor.

## LAMINATE TRANSITION COLORS

<b>169 Tamarind</b>	<b>170 Brownie</b>	<b>171 Golden</b>
<b>172 Acorn</b>	<b>173 Auburn</b>	<b>174 Ginger</b>
<b>175 Caramel</b>		

**SAFETY STRIDE TRANSITIONS**

<b>SST-XX-A</b>		Safety Stride to floor. Tapered reducer.
<b>SST-XX-B</b>		Safety Stride to 1/8" material.
<b>SST-XX-C</b>		Safety Stride to 1/4" or 5/16" material.

**TUB MOULDINGS**

<b>TM-50*</b> 5' pieces (Self-Stick)		Luster finish cove for bathtub, counter and shelves. 1-1/2" height. White only.
<b>TM-50-A*</b> 5' pieces (Self-Stick)		Luster finish cove for bathtub, counter and shelves. 1" height. White only.

\* Available in 50 White only.

**EDGE GUARDS**

<b>EG-XX-G</b>		5/16" material to floor.
<b>EG-XX-H</b>		1/4" material to floor.
<b>EG-XX-J</b>		3/16" material to floor.
<b>EG-XX-K</b>		3/16" material to floor.
<b>EG-XX-L</b>		5/16" material to floor.
<b>EG-XX-M</b>		1/4" or 5/16" carpet over tackless to floor.
<b>EG-XX-W</b>		3/8" material to floor.

**THRESHOLDS**

U.S. Patent No. 6,553,616

<b>VT-XX-M2</b> 3' pieces		5-1/2" carpet threshold. For stretch-in and glue-down carpet and ceramic.
<b>VT-XX-M6</b> 3' pieces		1-3/4" carpet threshold. For stretch-in and glue-down carpet and ceramic.

**FEATURE STRIPS**

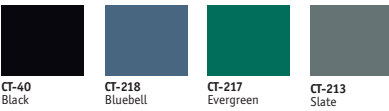
<b>FS-XX-DW1</b> 50' roll		1/4" wide feature strip for 1/8" material.
<b>FS-XX-DW2</b> 50' roll		1/2" wide feature strip for 1/8" material.
<b>FS-XX-DW3</b> 50' roll		1" wide feature strip for 1/8" material.

**CONTOUR EDGES**

<b>CT-XX</b> 8.1' pieces		3/8" to 1/4" material for curved installations up to 20" radius.
-----------------------------	--	--



**MATTE**



**SPECKSTONE®**



**METALLIC**



For a view of the full line of Floor Finishing Accessory solutions, please visit [Johnsonite.com](http://Johnsonite.com).

**SubFloor Leveler System™**

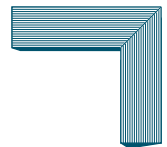
U.S. Patent No. 7,174,682

**SUBFLOOR LEVELER SYSTEM COMPONENTS (BLACK ONLY)**

<b>LS-40-F</b>		Reduces 1/8" to 0".
<b>LS-40</b>		Reduces 1/4" to 0". Can be cut at score line to reduce height as indicated.
<b>LS-40-K</b>		Reduces 1/4" to 0". Tapered flat for tack strip installation.
<b>LS-40-D</b>		Reduces 3/8" to 0". Can be cut at score line to reduce height as indicated.
<b>LS-40-E</b>		Reduces 1/2" to 0". Can be cut at score line to reduce height as indicated.
<b>LS-40-G</b>		Reduces 3/4" to 0".
<b>LS-40-B</b>		Reduces 3/8" to 1/4". Can be used alone or with LS-40 to extend transition.
<b>LS-40-C</b>		Reduces 1/2" to 3/8". Can be used alone or with LS-40-D or LS-40-B to extend transition.



\*The LS-40, LS-40-D and LS-40-E Leveler System Components can be cut at specially premarked scoring lines to create lower transitions for 1/8", 3/16", 1/4" or 3/8" gauge heights if needed, or can be cut to create job-specific heights. All SubFloor Leveler System Components are 48" long or can be special-ordered in other lengths.



**CORNER MITER OPTION**

Pieces can be cut and fit together to form mitered corners to transition evenly from all sides.

Johnsonite's patented SubFloor Leveler System™ helps eliminate abrupt changes in elevation that tend to trip people up. They provide a gradual ramp for a smooth transition between two different flooring elevations. Unlike traditional patching compounds, the Leveler System eliminates the need for costly man-hours, long curing time and uncertain results. Instead, the SubFloor Leveler System installs easily and is ideal in high-traffic areas where small elevation changes can cause expensive slip/fall accidents.

- Available in 4' sections
- Custom lengths available by special order
- Quickly provides a smooth, uniform transition
- No waiting for leveling compounds to cure
- Immediately accepts new flooring over it
- Installs over concrete, wood, terrazzo, ceramic and steel subfloors
- Will not crack or crumble over time

For a view of the full line of SubFloor Leveler System™ solutions, please visit [Johnsonite.com](http://Johnsonite.com).

# www.Johnsonite.com

## TOOLS FOR CREATING HIGH-PERFORMANCE ENVIRONMENTS

Johnsonite.com is an all-inclusive, easy-to-navigate site that provides easy access to key information such as product and color detail, specifications, installation and maintenance instructions, case studies and much more. The site also clarifies the benefits of the Johnsonite® System – the world's most integrated high-performance flooring system. Our system can play an integral role in designing high-performance spaces that create real lifetime return for end-users. **Johnsonite.com** can help you calculate return on investment, save you time by using our Color Foundations™ system of neutrals and let you literally design custom flooring solutions. Visit us today!



Our point of view is that you don't design and manufacture sustainable products just because it feels good. You create them to help end-users achieve lifetime economic return. To solve problems. And to make people and a space more productive. Take our modular flooring systems like UnderLock. They require no adhesives. Which is good for the environment. But there's also a real benefit to end-users: more flexible space. The same goes for rePLACE, the world's first demountable wall base system. In fact, many of our products are good for the environment and good for business because of their long life cycles and reduced maintenance requirements. And many of our flooring solutions have earned the FloorScore certification for their low impact on interior environments. Please look for the FloorScore logo throughout this catalog.

Economic return.  
It's how sustainability becomes sustainable.



Johnsonite  
A Tarkett Company  
16910 Munn Road  
Chagrin Falls, OH 44023  
800-899-8916 or 440-543-8916

[www.johnsonite.com](http://www.johnsonite.com)

# Johnsonite®