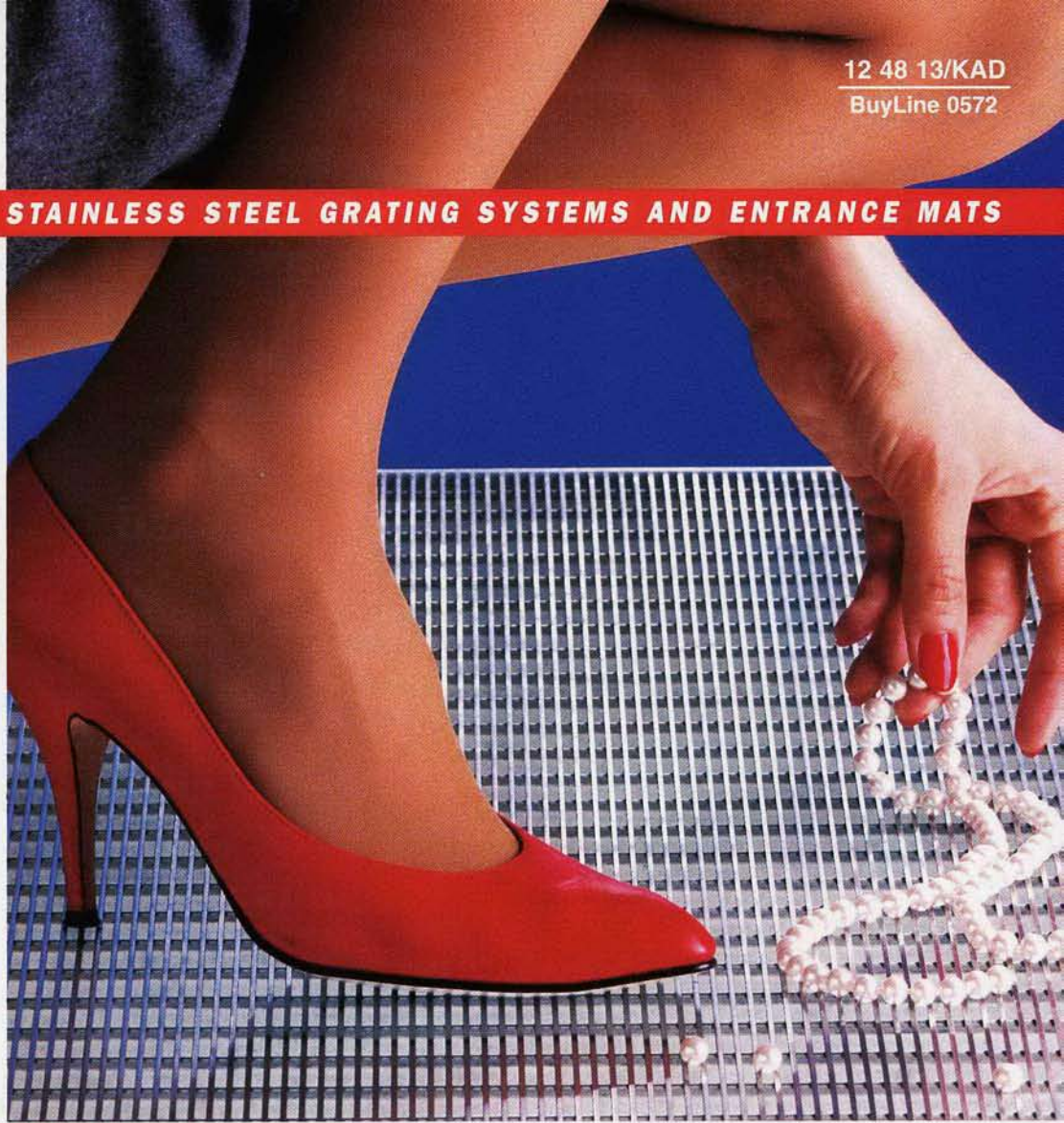


12 48 13/KAD
BuyLine 0572

THE LEADER IN STAINLESS STEEL GRATING SYSTEMS AND ENTRANCE MATS



STAINLESS STEEL GRATES AND GRILLES

ALUMINUM GRATES AND GRILLES

ARCHITECTURAL BRONZE GRATES AND GRILLES

ALUMINUM ROLL-OUT MAT SYSTEMS

ALUMINUM ENTRANCE GRID SYSTEMS

KADEE
INDUSTRIES, INC.

1 1/8" STAINLESS STEEL GRATING

Applications

- ENTRANCE MATS:
- LEVEL BED AND PIT APPLICATIONS
- TRENCH DRAIN GRILLES
- TREE GRATES
- SWIMMING POOL GRATES
- REVOLVING DOORS
- AIR GRILLES

Specifications

■ Section 12484

Furnish and install KD98 Stainless Steel Floor Grate as manufactured by Kadee Industries, Cleveland, Ohio, (800) 321-3827.

■ Construction

Tread Material Type 304 stainless steel .071" x .177" surface wire, #4 satin finish.

Support Rods Type 304 stainless steel .070" x 1", spaced 1" on center.

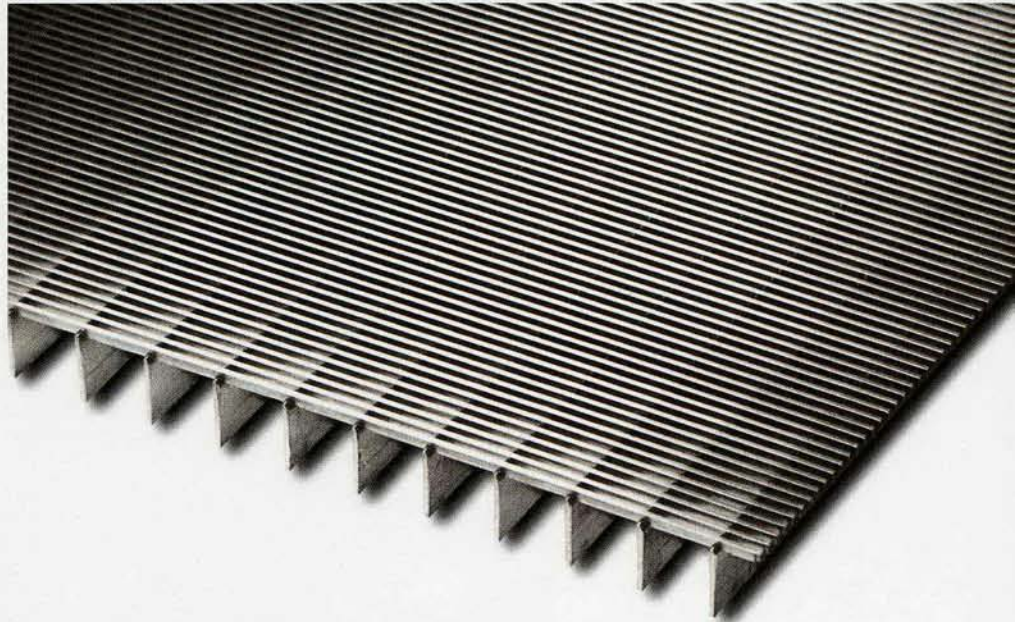
Wire Spacing Standard slot openings of .125".

Construction Each juncture of surface wires to support rods shall have electric resistance welded joints. Hidden or visual locking devices are provided to fasten grating.

Framing 6063-T5 extruded aluminum or Type 304 stainless steel. Custom pit liners are available in aluminum, stainless steel, and galvanized steel for drainage or evaporation applications.

■ Warranty

5 years - details on back cover.

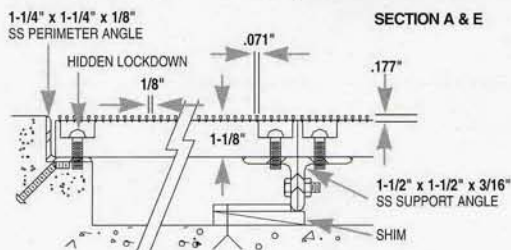


Durable, Practical with the long-lasting beauty of stainless steel.

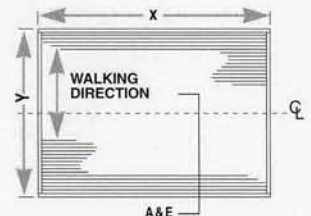
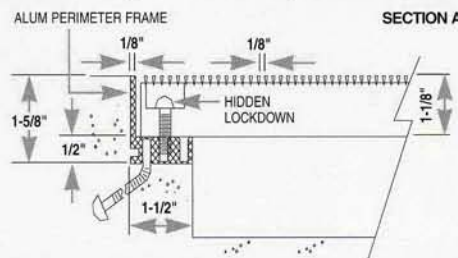
- Specifically designed to span up to 3' without supports, with the ability to withstand a live load of 300lbs. per square foot. Perfect for drains and trenches.
- Wires are evenly spaced providing safe support for high heels, canes, wheelchairs, crutches, and other walking aids.
- Custom designs available to fit almost any application.
- 50% air flow, great for registers.
- Self-cleaning design makes regular maintenance effortless.



KD98 SS Grating, SS Subframe, & hidden lockdowns



KD98 SS Grating, Alum Subframe, & hidden lockdowns



Applications

- ENTRANCE MATS:
- LEVEL BED APPLICATIONS
- AIR GRILLES
- LIGHT DIFFUSERS
- REVOLVING DOORS
- CEILING AND WALL APPLICATIONS

Specifications

■ Section 12484

Furnish and install KD58 Stainless Steel Floor Grate as manufactured by Kadee Industries, Cleveland, Ohio, (800) 321-3827.

■ Construction

Tread Material Type 304 stainless steel .071" x .177" surface wire, #4 satin finish.

Support Rods Type 304 stainless steel .070" x .50", spaced 1" on center.

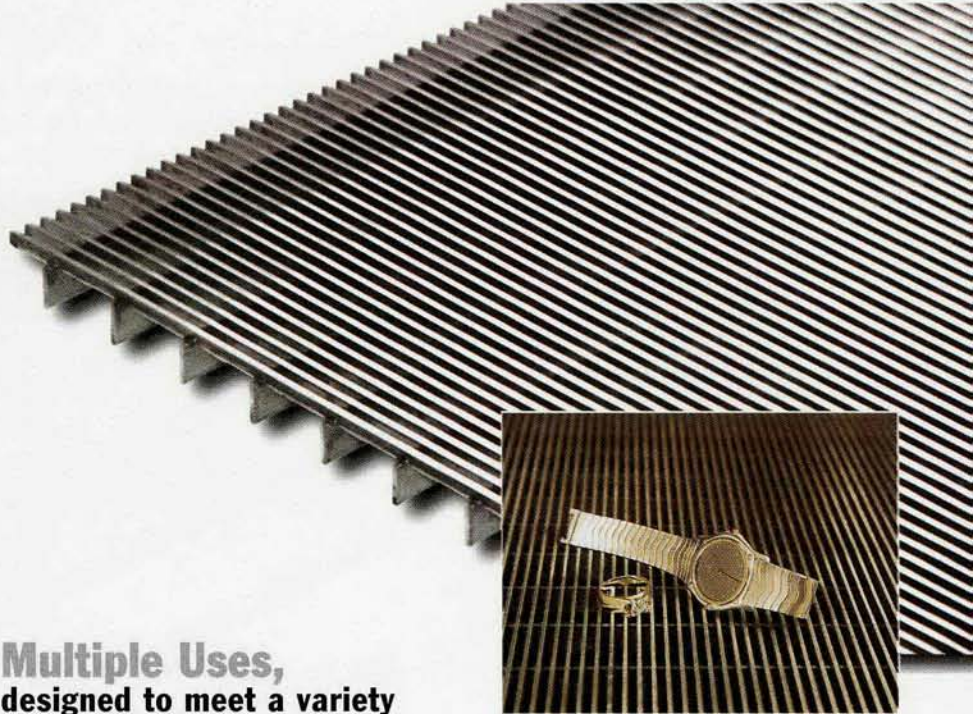
Wire Spacing Standard slot openings of .125".

Construction Each juncture of surface wires to support rods shall have electric resistance welded joints. Hidden or visual locking devices are provided to fasten grating.

Framing 6063-T5 extruded aluminum or Type 304 stainless steel.

■ Warranty

5 years - details on back cover.



Multiple Uses,
designed to meet a variety
of needs.

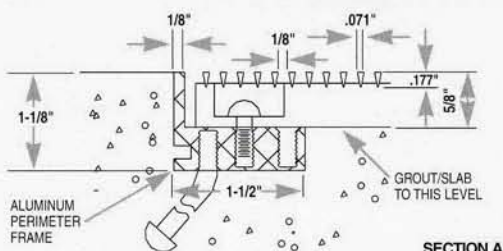
- Designed for shallow, level bed recessed applications for new construction or renovation.
- Self-cleaning design makes regular maintenance effortless.
- Wires are evenly spaced providing safe support for high heels, canes, wheelchairs, crutches, and other walking aids.
- Custom designs available to fit almost any application.
- 50% air flow, great for registers.

KD38 3/8" STAINLESS STEEL GRATING

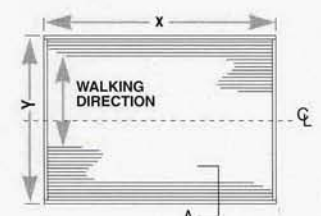
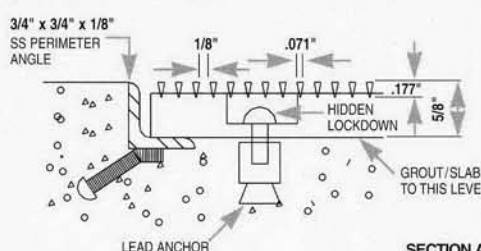
Similar to the model KD58, but at 3/8" height. Excellent alternative to aluminum or vinyl entrance mats, with a much longer life and lower maintenance. KD38 was designed as an ideal replacement/upgrade to standard worn out, roll-out mats.

Surface mounted applications have stainless steel flanging welded to edges of grating.

KD58 SS Grating, Alum Subframe, & hidden lockdowns



KD58 SS Grating, SS Subframe, & hidden lockdowns



3/8" AND 5/8" STAINLESS STEEL GRATING

Applications

3/8" FOR SURFACE MOUNTED AND SHALLOW RECESS APPLICATIONS.

5/8" FOR SHALLOW RECESS, LEVEL BED APPLICATIONS.

Specifications

■ Section 12484

Furnish and install ENTEC™ Stainless Steel Floor Grate with vinyl or carpet inserts as manufactured by Kadee Industries, Cleveland, Ohio, (800) 321-3827.

■ Construction

Tread Material Type 304 stainless steel .090" x .172" surface wire with #4 satin finish.

Support Rods Type 304 stainless steel, spaced on 2" centers. Rod height based on model chosen: ENTEC-38: .25" or ENTEC-58: .50"

Wire Spacing Standard slot openings of .145".

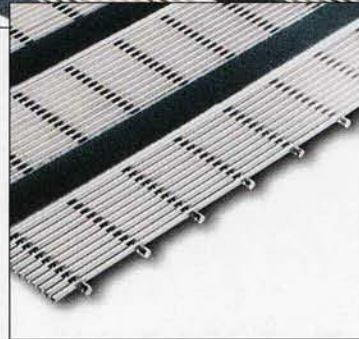
Insert Track Type 304 stainless steel 1-3/8" channel uniformly spaced on 4" centers.

Construction Each juncture of surface wires to support rods shall have electric resistance welded joints. Hidden or visual locking devices are provided to fasten grating.

Framing 6063-T5 extruded aluminum or Type 304 stainless steel. Surface mounted applications have stainless steel flanging fastened to edges of grating.

The Ultimate Entranceway Solution

The grating is a combination of stainless steel surface wires, which create a cleaning/scraping process, along with carpet or vinyl inserts spaced every 4" on center, to clean and dry shoe traffic.



For a Distinctive and Decorative Appearance

- Designed for surface mounted, and shallow recessed applications for new construction or renovation.
- Self-cleaning design makes regular maintenance effortless.
- Wires are evenly spaced providing safe support for high heels, wheel chairs, crutches, canes and other walking aids.
- Custom designs available to fit almost any application.

■ Carpet

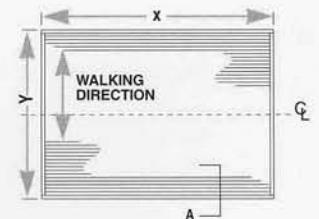
Regular duty: 100% nylon fibers;
Heavy duty: 100% polypropylene fibers.

■ Vinyl

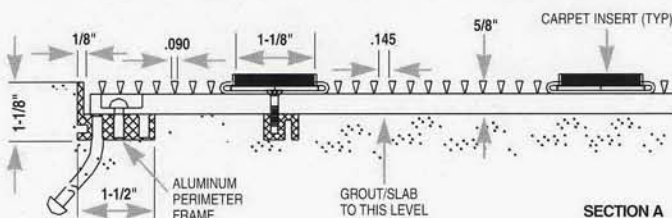
Serrated, nonslip surface with a convex design for drainage.

■ Warranty

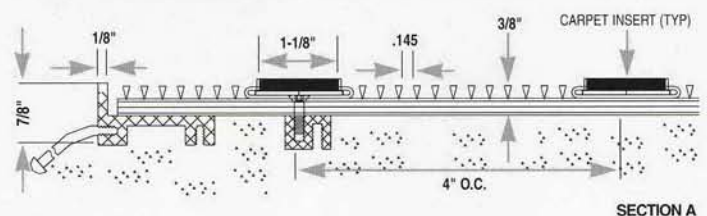
5 years - details on back cover.



ENTE-58 SS Grating w/Alum Subframe, hidden lockdowns, carpet inserts



ENTE-38 SS Grating w/Alum Subframe, hidden lockdowns, carpet inserts



ALUMINUM BAR GRATING

Applications

ENTRANCE MATS:

LEVEL BED APPLICATIONS

DRAINAGE APPLICATIONS

AIR GRILLES

LIGHT DIFFUSERS

CEILING AND WALL APPLICATIONS

Specifications

■ Section 12484

Furnish and install KDAL Aluminum Floor Grate as manufactured by Kadee Industries, Cleveland, Ohio, (800) 321-3827.

■ Construction

Tread Material Mill finish architectural aluminum, 1.175" x .25" tread bars.

Tread Spacing Standard slot openings of .250"

Construction Tread bars spaced with metal spacers and assembled with 1/4" threaded steel rods and nuts. Hidden locking devices are provided to fasten grating.

Framing 6063-T5 extruded aluminum. Custom pit liners are available in aluminum, stainless steel, and galvanized steel for drainage or evaporation applications.

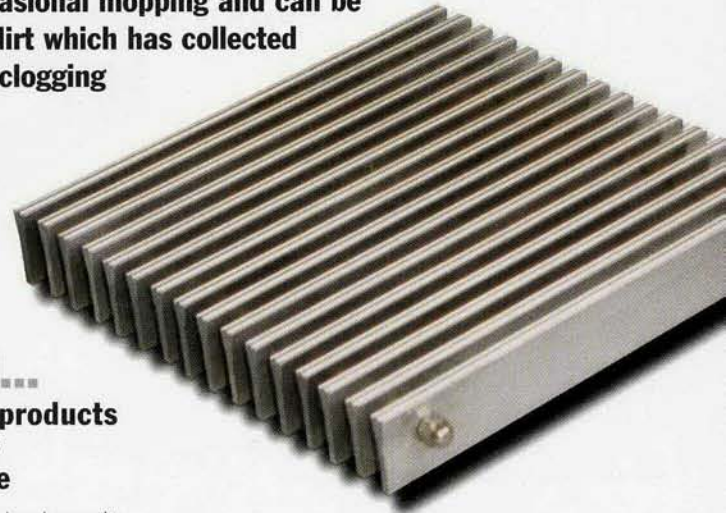
Finish Standard mill. Anodized finishes available upon request.

■ Warranty

1 year - details on back cover.

Lightweight Aluminum Grating Sections

They're easy to handle, and hold-up well in numerous installations. As one of our most economical products, Kadee's aluminum grating only requires occasional mopping and can be lifted to remove dirt which has collected beneath the non-clogging tread bars.



Economical...

...and functional products that are virtually maintenance-free

- Designed for level bed or pit applications.
- Self cleaning design limits tracked-in dirt and mud.
- Designed for 50% free airflow, making this ideal for air registers.
- All metal design eliminates carpet maintenance.
- Custom designs available to fit almost any application.

KDBR

ARCHITECTURAL BRONZE BAR GRATING

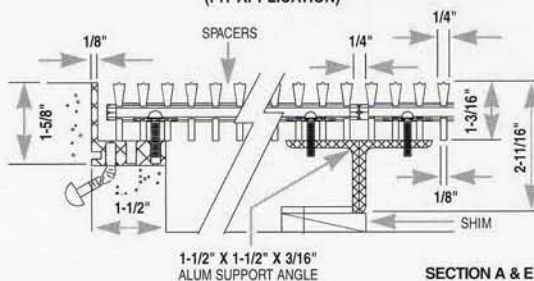
Add beauty and elegance to your design

Have your next project reflect the added luxury and prestige of Kadee's Architectural Bronze Grating.

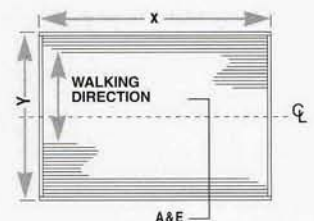
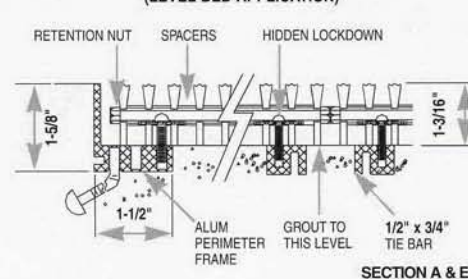
When style, functionality, and durability are of the utmost importance, be sure to specify KDBR Architectural Bronze Grating. The construction of the bronze grating is similar to KDAL, except the tread height is .8125".



KDAL Alum Bar Grating w/ Alum Subframe, hidden lockdowns (PIT APPLICATION)



KDAL Alum Bar Grating w/ Alum Subframe, hidden lockdowns (LEVEL BED APPLICATION)



Mat Clean Tread™

MODELS **KDCM** & **KDVM**

HIGH QUALITY, LOW COST ALUMINUM ROLL-OUT ENTRANCE MAT SYSTEMS

ALUMINUM ROLL-OUT MAT WITH **CARPET** OR **VINYL** INSERTS

Applications

ENTRANCE MATS:

SHALLOW RECESS WITH FRAME

SURFACE MOUNTED WITH VINYL RAMPS

SURFACE MOUNTED W/SQUARE NOSING

Specifications

■ Section 12484

Furnish and install KDCM or KDVM Aluminum Roll-Out Mat as manufactured by Kadee Industries, Cleveland, Ohio. (800) 321-3827.

■ Construction

Tread Surface Carpet or vinyl inserted treads, spaced on 1-1/2" centers.

Tread Rails Mill-finished extruded aluminum with optional drainage holes.

Framing 6063-T5 extruded aluminum. Optional tapered vinyl ramps, for surface mounted units, are attached to first and last panels of each mat. Filler strips are available to adapt mat dimensions to existing recessed areas.

Finishes Standard mill. Anodized finishes available upon request.

■ Carpet

Regular duty: 100% nylon fibers;

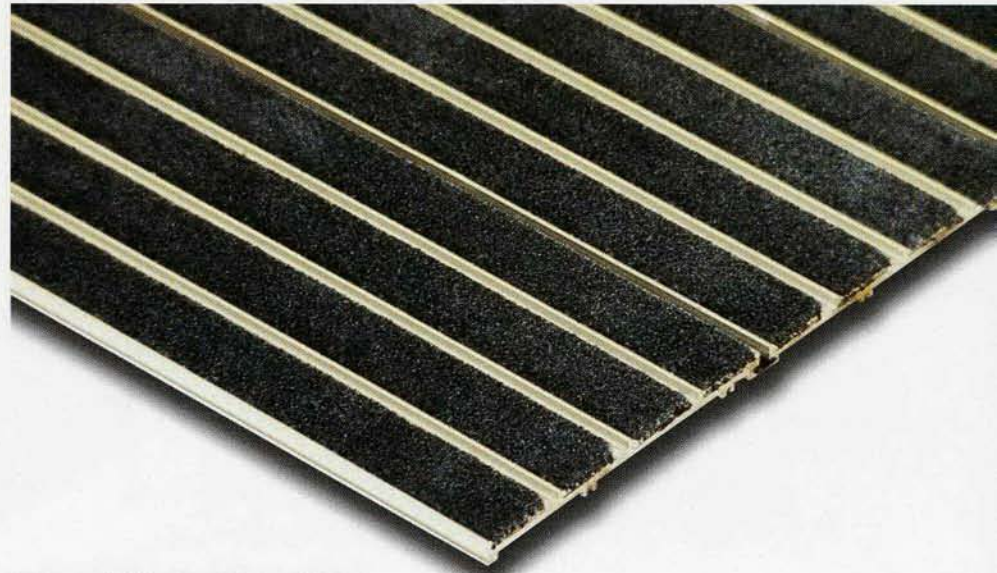
Heavy duty: 100% polypropylene fibers.

■ Vinyl

Serrated, nonslip surface with a convex design for improved drainage.

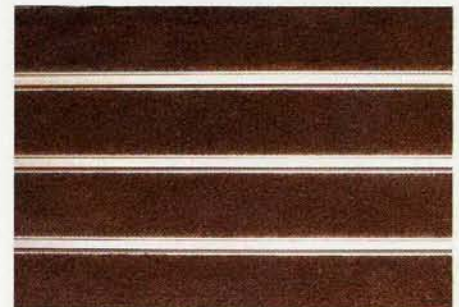
■ Warranty

2 years - details on back cover.

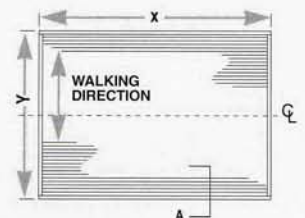
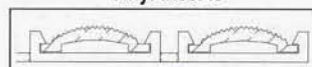


The High Quality, low cost alternative

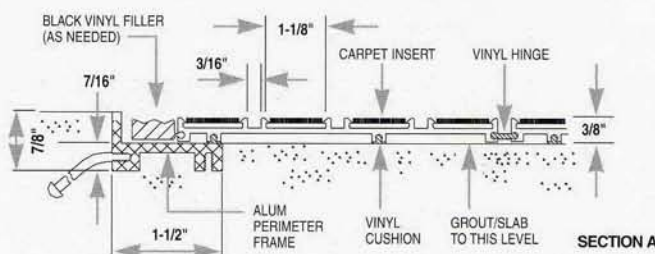
- Reduces tracked-in dirt, slush, and mud.
- Ball and socket hinge design means easy roll-up for cleaning.
- 100% nylon carpet inserts closely spaced to prevent crutch tips and canes from catching.
- Vinyl hinges eliminate metal-to-metal rattle and corrosion lockup.
- Custom designs available to fit almost any application.



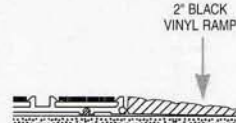
Vinyl Inserts



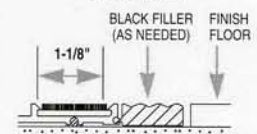
KDCM Alum Roll-Out Mat with Alum Subframe, carpet inserts



Surface application
TAPERED VINYL FRAME



Surface application
NO FRAME



Arc Clean Tread™

MODELS **KDCP & KDVP**

PRACTICAL & ECONOMICAL ALUMINUM ENTRANCE GRID SYSTEMS

ALUMINUM GRID WITH **CARPET** OR **VINYL** INSERTS

Applications

LEVEL BED - SHALLOW RECESS

DRAINAGE - DEEPER RECESS WITH OR WITHOUT SLOPED RECESS FLOOR

Specifications

■ Section 12484

Furnish and install KDCP or KDVP Aluminum Entrance Grid as manufactured by Kadee Industries, Cleveland, Ohio. (800) 321-3827.

■ Construction

Tread Surface Carpet or vinyl inserted treads spaced on 1-1/2" centers.

Tread Rails Mill-finished extruded aluminum with drainage holes.

Framing 6063-T5 extruded aluminum. Custom pit liners are available in aluminum, stainless steel, and galvanized steel for drainage or evaporation applications.

Finishes Standard mill. Anodized finishes available upon request.

■ Carpet

Regular duty: 100% nylon fibers;
Heavy duty: 100% polypropylene fibers.

■ Vinyl

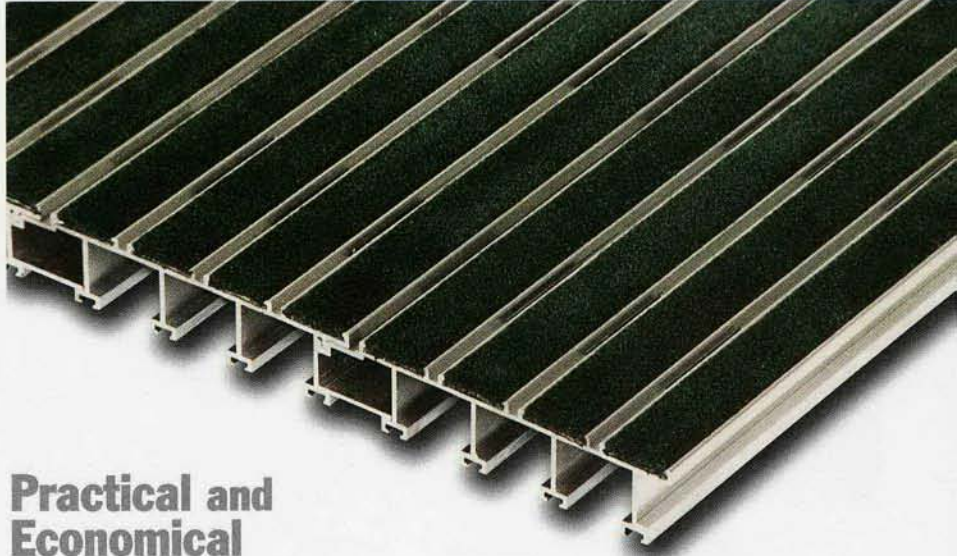
Serrated, nonslip surface with a convex design for improved drainage.

■ Loading

Supports a uniform load of 200 lbs. per square foot.

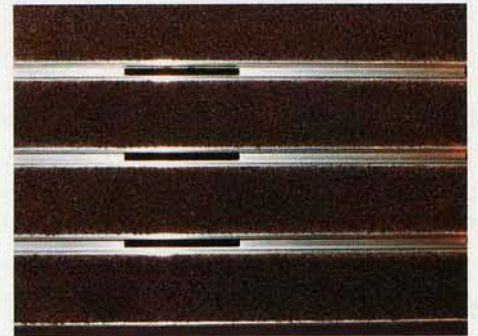
■ Warranty

2 years - details on back cover.

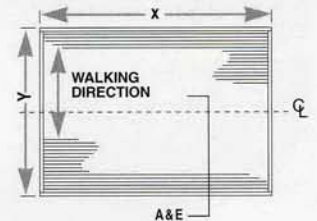
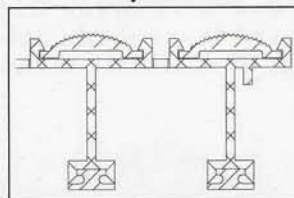


Practical and Economical

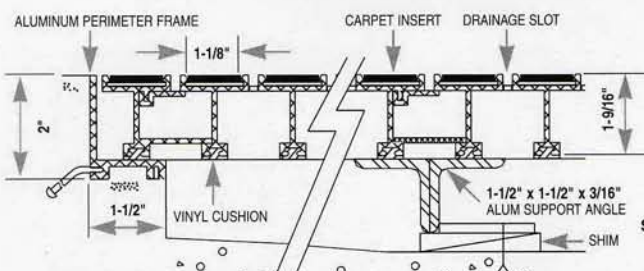
- Reduces tracked-in dirt, slush, and mud.
- Available for level bed or pit applications.
- Drainage slots keep dirt and water away from walking surface.
- 100% nylon carpet inserts closely spaced to prevent crutch tips, high heels, and canes from catching.
- Custom designs available to fit almost any application.



Vinyl Inserts

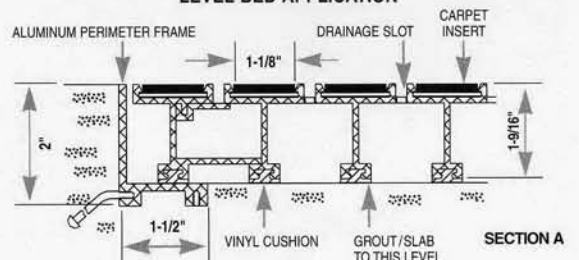


KDCP Alum Entrance Grid w/carpet inserts, alum subframe
PIT APPLICATION



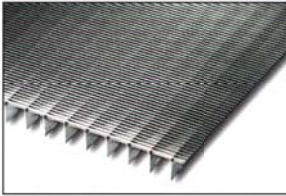
SECTION A & E

KDCP Alum Entrance Grid w/carpet inserts, alum subframe
LEVEL BED APPLICATION

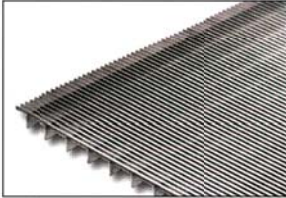


SECTION A

**OUR DISTINCTIVE,
QUALITY PRODUCT LINE**



KD98
1-1/8" Stainless Steel
Grating



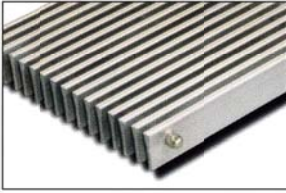
KD58
5/8" Stainless Steel
Grating



KD38
3/8" Stainless Steel
Grating



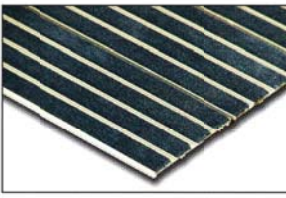
ENTEC
3/8" & 5/8" Stainless
Steel Grating
with Carpet Inserts



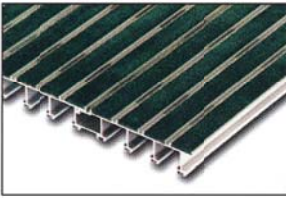
KDAL
Aluminum
Grating



KDBR
Bronze
Grating



KDCM & KDVM
Aluminum Roll-out
Entrance Mats



KDPC & KDVP
Aluminum Entrance
Grids

**KADEE GRATING SYSTEMS
ARE USED AROUND THE WORLD**

African American Museum	Detroit, MI	Bridge Grating
Bob Evans Restaurants	U.S.A.	Entrance Grating
Chicago Transit Stations	Chicago, IL	Trench Drains
Chugiak Eagle River H.S.	Anchorage AK	Entrance Grating
Dallas Cowboys Training Center	Irvine, TX	Trench Drains
Federal Reserve Bank	Minneapolis, MN	Entrance Grating
Franklin D. Roosevelt Memorial	Washington, DC	Entrance Grating
Holocaust Museum	Washington, DC	Entrance Grating
Mammoth Caves	Kentucky	Bridge Grating
MGM Grand Hotel	Las Vegas, NV	Entrance Grating
Miami Airport Elevators	Miami, FL	Ceiling Treatments and Light Diffusers
Newseum-Freedom Forum	Arlington, VA	Ceiling Treatments and Light Diffusers Bridge Grating
Nine Thames Reach	London, England	Air Grilles
Pinellas County Courthouse	Clearwater, FL	Ceiling Treatments and Light Diffusers Air Grilles
Port Canaveral	Ft. Lauderdale, FL	Tree Grating
Rockefeller Plaza	New York, NY	Air Grilles
S.F. Museum of Modern Art	San Francisco, CA	Bridge Grating
Sea World	Orlando, FL	Trench Drains
United Nations Plaza	New York	Ceiling Treatments and Light Diffusers
U.S. Courthouse	Tampa, FL	Entrance Grating
U.S. Courthouse	Portland, OR	Entrance Grating
U.S. Courthouse	Minneapolis, MN	Entrance Grating
World Trade Center	New York, NY	Entrance Grating

Product Warranty

Kadee Industries warrants to its purchasers that any product will be free from defects in material and workmanship. The liability of Kadee Industries is strictly limited to the repair or replacement of units that, in the opinion of the factory, were properly applied and installed and subsequently found to be defective. No claims for consequential damages of any nature will be allowed. This warranty is in lieu of all other warranties, expressed or implied.

Kadee Industries reserves the right to make product changes or withdraw any design without notice.

For More Product Information

With over a quarter of a century of experience in the architectural grating field, Kadee Industries offers a high quality, low-price alternative to competitive products. Questions regarding our products can be answered directly by our factory sales representatives.

Additional product information is available upon request. Contact Kadee for product samples or an architectural binder containing complete product specifications, details, and samples.

800-321-3827

Email: Sales@KadeeIndustries.com

Website: www.KadeeIndustries.com

KADEE
INDUSTRIES, INC.

7160 KRICK ROAD ■ WALTON HILLS, OH 44146
(800) 321-3827 ■ TEL (440) 439-8650 ■ FAX (440) 439-6889