



V E T T E R S T O N E



V E T T E R S T O N E

An enduring product, a trusted partner

Minnesota Stone is a high strength dolomitic limestone. Its inviting warmth, timeless strength and proven durability have made it a leading choice for monumental buildings for more than a century.

Pictured on cover: 1) National Museum of the American Indian, Washington, DC.; Design concept: Douglas Cardinal Ltd., in collaboration with GBQC; Johnpaul Jones, Ramona Sakiestewa and Donna House. Architects: Jones & Jones, Seattle, WA, SmithGroup, Washington, DC., Lou Weller, Albuquerque, NM, the Native American Design Collaborative, and Polshek Partnership Architects, NY, NY, Photo: Robert Lautman. • Pictured above from left to right, top to bottom: 1) National Museum of the American Indian, Washington, DC.; Design concept: Douglas Cardinal Ltd., in collaboration with GBQC; Johnpaul Jones, Ramona Sakiestewa and Donna House. Architects: Jones & Jones, Seattle, WA, SmithGroup, Washington, DC., Lou Weller, Albuquerque, NM, the Native American Design Collaborative, and Polshek Partnership Architects, NY, NY, Photo: Robert Lautman. 2) Plaza Escada, Chicago, IL; Architect: Lucien Lagrange & Associates, LTD, Chicago, IL; Photo: Judith Bromley Photography. 3) U.S. Embassy, Moscow, Russia; Architect: HOK, Washington, DC; Photo: Alan Karchmer/Esto. All rights reserved. 4) Wells Fargo Center, Minneapolis, MN; Architect; Cesar Pelli & Associates, New Haven, CT; Photo: Christian Korab Photography. 5) Gonda Building, Mayo Clinic, Rochester, MN; Architect: Ellerbe Becket, Minneapolis, MN. • Pictured on opposite page from left to right, top to bottom: 1) Elton B. Stephens Science Center, Birmingham Southern College, Birmingham, AL; Architect: Garrison & Barrett Group, Inc., Birmingham, AL, Perkins & Will, Atlanta, GA; Photo, Jonathan Hillyer Photography, Inc./Esto. All rights reserved. 2) Wm. J. Wrigley Global Innovation Center, Chicago, IL; Architect; HOK, Chicago, IL., Photo, Patti & Katie Miller Photography. 3) Roppongi Hills, Tokyo, Japan; Architect; The Jerde Partnership, Venice, CA. 4) Grinnell College Campus Center, Grinnell, IA; Architect: Cesar Pelli & Associates, New Haven, CT. 5) Private Residence, Madison Lake, MN.



A leading choice

For more than a century, stone has been quarried, cut and shipped to sites around the world from Vetter quarries in the Kasota-Mankato stone district of Minnesota. A third generation family business, Vetter Stone has earned a reputation for consistent product quality, technical precision and personalized customer service.

Whether used to construct a metropolitan high rise, embassy or distinctive home, the unique colors offered by Vetter's Minnesota Stone contributes warmth and authenticity to any architectural design.

See our other stone and granite products at alabamastone.com and calyxothinstone.com.

Luminous colors from the Kasota-Mankato stone district

M I N N E S O T A S T O N E



glacier buff, honed, fleuri cut

glacier buff, honed, veine cut

northern buff, honed, veine cut

northern buff, honed, fleuri cut

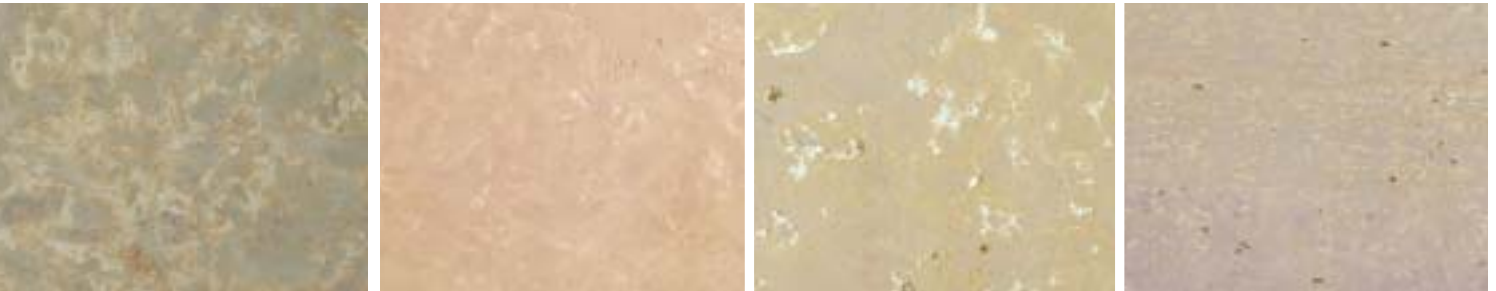


silver shadow, honed, veine cut

silver shadow, tapestry, veine cut

silver shadow, machine smooth, fleuri cut

veined pink, honed, veine cut



northern gold, honed, fleuri cut

northern pink buff, honed, fleuri cut

golden cloud, honed, fleuri cut

minnesota travernelle, honed, veine cut



travertino, honed, veine cut

northern gray buff, honed, fleuri cut

aspen red, honed

colorado yule, polished

FINISHES

Stone colors may vary slightly from the representations in this brochure.



honed

polished

medium tapestry

light tapestry

diamond ground

diamond belt / gang sawn

bush hammer

G R A N I T E

Vetter Stone can supply all your granite needs. Whether used in combination with Minnesota Stone or on its own, our broad array of colors complement any structure.



bethel white



dakota mahogany



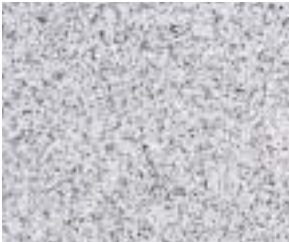
deer isle®



jet mist®



kershaw®



midnight grey



milford pink



missouri red



oconee



sparta pink



texas rose



NES green



caledonia



cambrian black



impala black



pine green



polychrome



portland brownstone



tobacco



verde lavras



vermillion



woodbury

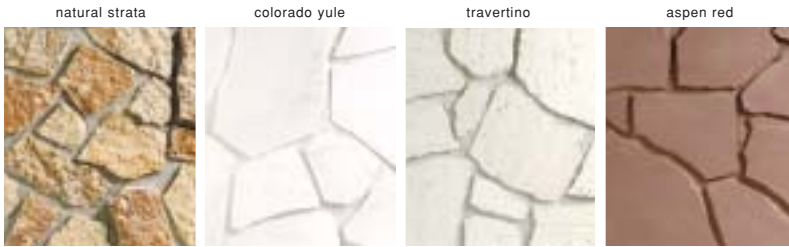
See our other stone and granite products at alabamastone.com and calyothinstone.com.



SPLITFACE PATTERNS

All splitface stone is available in full 3 1/2" thickness or in our 1" thick Calyxo line of thin stone. Call us or visit our website for detailing information, specification review or design assistance.

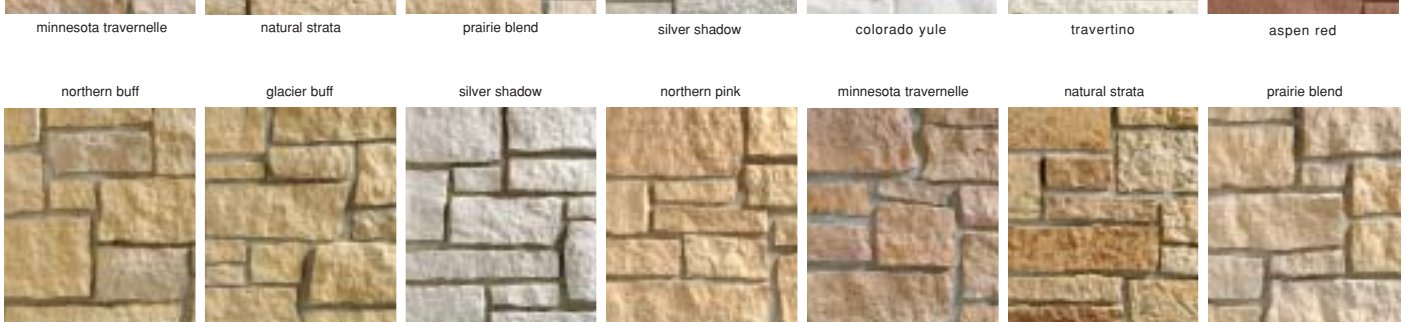
RANDOM



MINNESOTA RIVER



MINNESOTA SPRING



Splitface stone appeal

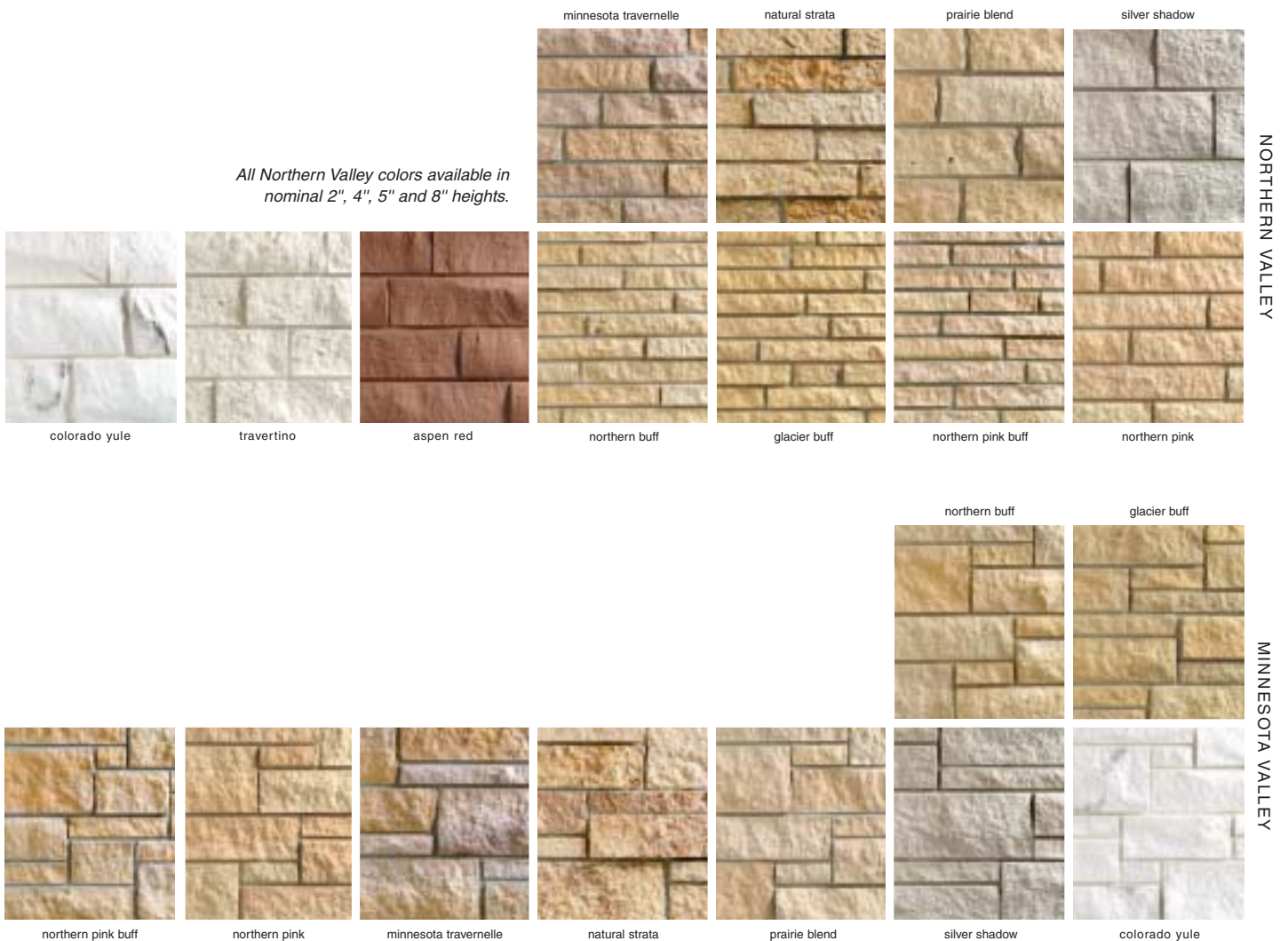
Splitface stone adds a rugged appeal to board room or bedroom. Used alone or in combination with cut stone, this soothing material exudes permanence and beauty.

Stone colors may vary slightly from the representations in this brochure.



Pictured on opposite page from left to right: 1) Wellstead of Rogers, Rogers, MN; Architect: Pope Associates, St. Paul, MN; Photo: Patti & Katie Miller Photography. 2) St. Peter Library, St. Peter, MN; Architect: Paulsen Architects, Inc., Mankato, MN; Photo: Patti & Katie Miller Photography. • Pictured above from left to right: 1) Private Residence, Mankato, MN. 2) Private Residence, Aspen, CO; Photo: Gallegos Corp., Vail, CO. 3) Private Residence, Madison Lake, MN; Deichman Construction, Mankato, MN.

All Northern Valley colors available in nominal 2", 4", 5" and 8" heights.



An enduring product, a trusted partner.



V E T T E R S T O N E

see us at
Sweets.com

See our other stone and granite products at
alabamastone.com and calyxothinstone.com.

www.vetterstone.com 1.800.878.2850

23894 Third Avenue Mankato, Minnesota 56001
Tel: 507.345.4568 Fax: 507.345.4777

Quarried and cut in the United States of America



 ALABAMASTONE

Calyxo

