



Refined tastes

The GE Monogram Collection™ opens up a world of palatable possibilities for your kitchen and home. With three distinct styles—professional, integrated and custom-panel—and seemingly endless options for customization, only Monogram offers something exquisite to suit every taste.





Professional ranges and rangetops

Like a recipe that has been perfected over generations, the Monogram collection of professional rangetops and dual-fuel ranges is the culmination of a 100-year tradition of GE cooking-product innovation. This rich and unparalleled legacy, combined with six years of intensive research and development, makes this new collection the choice for restaurant-caliber cooking performance in the home.



48" dual-fuel ranges and rangetops



ZDP484NGPSS (natural gas)
ZDP484LGPSS (liquid propane)
 48" dual-fuel professional range with four gas burners, a grill and a griddle
 Dimensions: 47-7/8" W x 35-1/4"—36-3/4" H x 28-1/4" D



ZGU484NGPSS (natural gas)
ZGU484LGPSS (liquid propane)
 48" professional rangetop with four gas burners, a grill and a griddle
 Dimensions: 47-7/8" W x 8-1/2" H x 27-1/2" D



ZDP486NRPSS (natural gas)
ZDP486LRPSS (liquid propane)
 48" dual-fuel professional range with six gas burners and a grill
 Dimensions: 47-7/8" W x 35-1/4"—36-3/4" H x 28-1/4" D



ZGU486NRPSS (natural gas)
ZGU486LRPSS (liquid propane)
 48" professional rangetop with six gas burners and a grill
 Dimensions: 47-7/8" W x 8-1/2" H x 27-1/2" D



ZDP486NDPSS (natural gas)
ZDP486LDPSS (liquid propane)
 48" dual-fuel professional range with six gas burners and a griddle
 Dimensions: 47-7/8" W x 35-1/4"—36-3/4" H x 28-1/4" D



ZGU486NDPSS (natural gas)
ZGU486LDPSS (liquid propane)
 48" professional rangetop with six gas burners and a griddle
 Dimensions: 47-7/8" W x 8-1/2" H x 27-1/2" D

36" dual-fuel ranges and rangetops



ZDP364NRPSS (natural gas)
ZDP364LRPSS (liquid propane)
36" dual-fuel professional range
with four gas burners and a grill
Dimensions:
35-7/8" W x 35-1/4"-36-3/4" H x 28-1/4" D



ZGU364NRPSS (natural gas)
ZGU364LRPSS (liquid propane)
36" professional rangetop
with four gas burners and a grill
Dimensions:
35-7/8" W x 8-1/2" H x 27-1/2" D



ZDP364NDPSS (natural gas)
ZDP364LDPSS (liquid propane)
36" dual-fuel professional range
with four gas burners and a griddle
Dimensions:
35-7/8" W x 35-1/4"-36-3/4" H x 28-1/4" D



ZGU364NDPSS (natural gas)
ZGU364LDPSS (liquid propane)
36" professional rangetop
with four gas burners and a griddle
Dimensions:
35-7/8" W x 8-1/2" H x 27-1/2" D



ZDP36N6HSS (natural gas)
ZDP36L6HSS (liquid propane)
36" dual-fuel professional range
with six gas burners
Dimensions:
35-7/8" W x 35-1/4"-36-3/4" H x 28-1/4" D



ZGU36N6HSS (natural gas)
ZGU36L6HSS (liquid propane)
36" professional cooktop with
six gas burners
Dimensions:
35-7/8" W x 8-7/16" H x 26-5/8" D

30" dual-fuel range



ZDP304NPSS (natural gas)
ZDP304LPSS (liquid propane)
30" dual-fuel professional range
with four gas burners
Dimensions:
29-7/8" W x 35-1/4"-36-3/4" H x 28-1/4" D

Backsplash options



ZXADJB48PSS (shown)
ZXADJB36PSS
ZXADJB30PSS
30"-36" adjustable-height
backsplash with warming shelf



ZX12B48PSS (shown)
ZX12B36PSS
ZX12B30PSS
12" backsplash

All models come equipped for island or noncombustible wall installations. Optional fixed (12") or adjustable-height (30"-36") backsplashes are available. The adjustable-height backsplash comes with a slotted shelf/warming rack and is designed to fill the space between the range and the hood.

Accessories included



Depending on the model and space requirements, the toe kick, power cord, grill and griddle covers, bamboo cutting board, island vent trim and other accessories are included—not offered a la carte.



Gas, induction and electric cooktops

From dabblers to devotees of gourmet cooking, Monogram® offers a stunning cooktop to satisfy every culinary inclination. Gas models provide precise control over a full spectrum of heat settings. Electric cooktops also provide an impressive range of cooking power, along with an array of convenient extras.



Gas cooktops



ZGU385NSMSS (natural gas)
ZGU385LSMSS (liquid propane)
36" stainless steel gas cooktop
Dimensions: 36-3/4" W x 3-3/4" H x 21-3/16" D



ZGU384NSMSS (natural gas)
ZGU384LSMSS (liquid propane)
30" stainless steel gas cooktop
Dimensions: 30-3/4" W x 3-3/4" H x 21-5/8" D

Stainless steel gas cooktop general features

Sealed, dual-flame stacked burners provide complete low-simmer-to-rapid-boil flexibility (140°F simmer to 18,000 BTUs*). The burners are sealed to the recessed cooktop for easy cleaning.

Hand-finished, stainless steel knob controls rotate with smooth precision. A red indicator light in each knob makes it easy to view and select heat settings.

Interlocking, continuous grates create a steady surface for cookware, and are integrated into the cooktop for a clean, finished appearance.

Sophisticated design. Angled and hand-finished to perfection, a Monogram stainless steel gas cooktop brings an incomparable mix of edge and elegance to the kitchen.

High-output cooking power. Intense heat ideal for searing and boiling is delivered by an 18,000-BTU* burner, featured on both 36" and 30" cooktops.

Silent, precise simmering. The simmer flame delivers a consistent 140°F temperature, without cycling on and off. No simmer plate required.

Electronic ignition with auto reignition. Instant ignition system ensures a continuous flame and reignites automatically if accidentally extinguished.

*Natural gas



ZGU36KSKSS 36" black, gas on glass cooktop with stainless steel trim
Dimensions: 36" W x 3-1/16" H x 21-7/16" D



ZGU36KBKBB 36" black, gas on glass cooktop
Dimensions: 36" W x 3-1/16" H x 21-1/4" D

Gas on glass cooktop general features

Five sealed burners deliver precise heat with more than 47,000 BTUs* of total cooking power.

Interlocking continuous grates allow easy movement of pots and pans from one burner to another. Each can be removed for safe cleaning in the dishwasher.

Sophisticated design. The front edge is slightly curved to form an attractive, soft arc that complements other Monogram appliances. Soft-touch control knobs enhance the overall appearance and allow easy adjustment of heat settings.

Precise, versatile temperature control. Five burners provide a range of heat intensities: one 15,000-BTU* burner, one 11,000-BTU* burner, one 9100-BTU* burner and two 6000-BTU* burners.

Induction and electric cooktops



ZHU36RSMSS 36" stainless metallic induction cooktop
Dimensions: 36-1/8" W x 4-5/8" H x 21" D



ZHU30RSMSS 30" stainless metallic induction cooktop
Dimensions: 29-7/8" W x 4-5/8" H x 21-1/2" D



ZHU36RMBB 36" black induction cooktop
Dimensions: 36" W x 4-5/8" H x 20-7/8" D



ZHU30RMBB 30" black induction cooktop
Dimensions: 29-3/4" W x 4-5/8" H x 21-3/8" D

Induction cooktops general features

Induction technology. Induction elements use electricity to produce a magnetic field that reacts with the iron in metal cookware—including cast iron and magnetic stainless steel pans—and transfers the heat directly to the cookware itself.

Sophisticated styling with a choice of two color options. Stainless steel-framed models have a reflective metallic finish that captures light and colors inside the kitchen. Black models are smooth from edge to edge, making them easy to clean. Digital controls embedded in the cooktop offer added style and convenience.

Flexible installation. Installation above a Monogram single oven is made possible by shallow-depth configuration with integrated cooling system.



ZEU36RSFSS 36" black digital cooktop with stainless steel trim
Dimensions: 36-1/8" W x 3-1/4" H x 21-1/4" D



ZEU30RSFSS 30" black digital cooktop with stainless steel trim
Dimensions: 29-7/8" W x 3-1/4" H x 21-3/4" D



ZEU36RBFBB 36" black digital cooktop
Dimensions: 36" W x 3-1/4" H x 21-1/8" D



ZEU30RBFBB 30" black digital cooktop
Dimensions: 29-3/4" W x 3-1/4" H x 21-5/8" D

Digital electronic cooktops general features

Dual elements. Designed to accommodate small to large pan sizes, these elements reduce energy loss and optimize cooking performance.

Pan size and presence sensors. Each dual element has an intuitive sensor that selects either a small or large element, depending on the size of the pan. If the pan is removed for more than a minute, the sensor will automatically shut off the element.

Full-function warmer. Positioned at center on 36" models and right rear on 30" models, the convenient warmer offers three warm settings, in addition to the 11 standard heat settings.



ZEU36KSKSS 36" solid black electric cooktop with stainless steel accents, bridge and triple-ring burners
Dimensions: 36-1/8" W x 3-1/4" H x 21-1/4" D



ZEU36KBKBB 36" solid black electric cooktop with bridge and triple-ring burners
Dimensions: 36" W x 3-1/4" H x 21-1/8" D

Electric cooktop features

Sophisticated styling. The flush, frameless design offers a stunning look of sleek simplicity, and the surface is completely solid for a dramatic "true black" appearance.

Expandable elements. Triple-ring and bridge elements allow you to create larger heating zones to match your cooking needs.

Cooking performance. Responsive ribbon elements allow you to simmer and sauté precisely. An infinite range of heat settings leaves plenty of room for improvisation.



Ventilation hoods

Monogram® ventilation systems offer an ideal combination of modern sophistication and innovation. The distinctive lines make an impressive statement in any décor, and different levels of ventilation provide effective power for any cooking occasion.



Chimney hoods



ZV1050SFSS 42" island stainless steel dual-blower hood, 1080 CFM (finished on all sides)
Dimensions: 42" W x 10" H x 31-1/2" D



ZV950SDSS 36" wall-mounted stainless steel dual-blower hood, 700 CFM (finished on three sides only)
Dimensions: 35-5/8" W x 10" H x 25" D

Optional 9'-10' ceiling recirculation kits available.



ZV850SB 36" island stainless steel hood, 360 CFM (finished on all sides)

Dimensions: 35-3/8" W x 8-1/4" H x 27-1/2" D

ZV750SY 36" wall-mounted stainless steel hood, 360 CFM (finished on three sides only)

Dimensions: 34-5/8" W x 8-1/4" H x 21-5/8"

Optional 8'-10' ceiling recirculation kits available.



ZV925SLSS 36" island glass canopy hood, 570 CFM
Dimensions: 35-7/8" W x 3-1/4" H x 27-9/16" D

ZV900SLSS 36" wall-mounted glass canopy hood, 570 CFM

Dimensions: 35-7/8" W x 3-1/4" H x 20-7/16" D

Not including duct work and covers.



ZV800SJSS 36" wall-mounted stainless steel hood with retractable glass canopy, 500 CFM (under-cabinet or stand-alone installation)

ZV800BJBB 36" wall-mounted black hood with retractable glass canopy, 500 CFM (under-cabinet or stand-alone installation)

Dimensions: 36" W x 1-1/2" H x 13-11/16" D

Ceiling recirculation kit included.



ZV830SMSS 30" black wall-mounted stainless steel chimney hood, 500 CFM

Chimney hoods general features

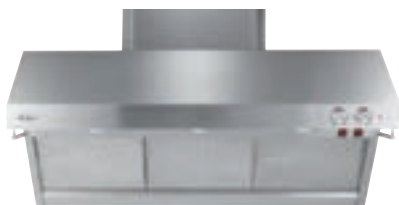
Stainless steel design with graceful contours and lines creates a distinct appearance that enhances any kitchen.

Halogen lights offer varying levels of intensity, from accent to ambient, to meet different needs.

Variable speed blower provides the power necessary to capture smoke and fumes produced by high-performance cooking equipment.

Removable stainless steel filters can be easily detached from the hood for safe cleaning in your dishwasher.

Professional hoods



These models include 22" stainless steel backsplash and warming shelf.



All three hoods above are shown with optional duct cover.



ZV48RSFSS 48" professional restaurant-style hood (shown), 1200 CFM

Dimensions: 48" W x 22-1/2" H x 25" D

ZV36RSFSS 36" professional restaurant-style hood, 640 CFM

Dimensions: 36" W x 22-1/2" H x 25" D

ZV30RSFSS 30" professional restaurant-style hood, 640 CFM

Dimensions: 30" W x 22-1/2" H x 25" D

ZV48TSFSS 48" professional tapered-sided hood (shown), 1200 CFM

Dimensions: 48" W x 18" H x 25" D

ZV36TSFSS 36" professional tapered-sided hood, 640 CFM

Dimensions: 36" W x 18" H x 25" D

ZV30TSFSS 30" professional tapered-sided hood, 640 CFM

Dimensions: 30" W x 18" H x 25" D

ZV48SSFSS 48" professional straight-sided hood (shown), 1200 CFM

Dimensions: 48" W x 18" H x 25" D

ZV36SSFSS 36" professional straight-sided hood, 640 CFM

Dimensions: 36" W x 18" H x 25" D

ZV30SSFSS 30" professional straight-sided hood, 640 CFM

Dimensions: 30" W x 18" H x 25" D

ZV54ISHSS 54" professional island hood (shown), 1200 CFM

Dimensions: 54" W x 24" H x 36-1/4" D

ZV42ISHSS 42" professional island hood, 1200 CFM

Dimensions: 42" W x 20" H x 31-3/4" D

Telescopic downdraft vents



ZVB36SHSS 36" stainless steel telescopic downdraft vent, 500 CFM

Dimensions: 36" W x 8-1/2" H x 2-1/4" D

ZVB30SHSS 30" stainless steel telescopic downdraft vent, 500 CFM

Dimensions: 30" W x 8-1/2" H x 2-1/4" D



ZVB36BHBB 36" black telescopic downdraft vent, 500 CFM

Dimensions: 36" W x 8-1/2" H x 2-1/4" D

ZVB30BHBB 30" black telescopic downdraft vent, 500 CFM

Dimensions: 30" W x 8-1/2" H x 2-1/4" D

Telescopic downdraft vents feature

Powerful ventilation. Stainless steel vent "telescopes" 8-1/2 inches above the cooktop when you cook, then retracts nearly flush to the surface. A variable-speed fan blower exhausts the air at a rate of 500 CFM.

Professional hoods general features

Stainless steel design offers a smooth and polished appearance, with almost no evidence of seams or screws.

Powerful ventilation helps keep your kitchen free of fumes and excess heat.

Infrared warming lamps cast a warm glow over the cooktop surface, while generating the heat necessary to keep baked goods at ready-to-serve temperatures.

Halogen task lighting illuminates the cooking surface below and can be adjusted to complement the dining occasion.

Removable stainless steel filters trap airborne grease particles, and can be easily removed for safe cleaning in your dishwasher.

Custom hood inserts



ZVC48LSS 48" stainless steel custom hood insert (shown), 1200 CFM

Dimensions: 46-1/2" W x 18" H x 21-1/4" D

ZVC42LSS 42" stainless steel custom hood insert, 1200 CFM

Dimensions: 40-1/2" W x 18" H x 21-1/4" D



ZVC36LSS 36" stainless steel custom hood insert (shown), 640 CFM

Dimensions: 34-1/2" W x 18" H x 21-1/4" D

ZVC30LSS 30" stainless steel custom hood insert, 640 CFM

Dimensions: 28-1/2" W x 18" H x 21-1/4" D

Custom hood inserts general features

Patented installation process. Allows an easy and secure connection with the ventilation duct from within the unit, without any modification to the exterior canopy.

Control panel with remote-mount option.

Provides additional design flexibility. At the time of installation, the panel can be detached from the insert for mounting on a wall, countertop or other location. When positioned onboard, the panel is angled downward to allow easy adjustment of ventilation and light settings.

Single- and dual-blower ventilation. With variable speed fan exhausts air at a rate of 640 and 1200 cubic feet per minute, making the inserts compatible with high-performance cooking appliances.

Complete with blower, liner and filters. So there's no need to order any additional components or accessory kits. Stainless steel mesh filters fit securely and lift out easily for safe cleaning in your dishwasher. Inserts compatible with high-performance cooking appliances.



Built-in convection wall ovens

If cooking is a fine art, then Monogram® convection wall ovens are its highest expression. Sleek, architectural lines and chamfered edges offer a look of polished refinement.

Culinary artistry extends to performance, as well. Electronic and professional-style models deliver convection cooking by means of a reverse-air system, which uses an innovative bidirectional fan to promote even heat circulation for consistent cooking results.



Integrated convection wall ovens with electronic dial controls



ZET2SMSS 30" stainless steel integrated double oven
Dimensions: 29-3/4" W x 52-7/8" H x 23-1/2" D



ZET1SMSS 30" stainless steel integrated single oven
Dimensions: 29-3/4" W x 28-1/4" H x 23-1/2" D



Integrated styling. Smooth, seamless exterior with tubular handle, electronic dial controls and expansive viewing window makes an unmistakable statement of quality and refinement.

Integrated convection wall ovens with LCD touchscreen controls



ZET2RMSS 30" stainless steel integrated double oven
Dimensions: 29-3/4" W x 52-7/8" H x 23-1/2" D



ZET1RMSS 30" stainless steel integrated single oven
Dimensions: 29-3/4" W x 28-1/4" H x 23-1/2" D



Integrated styling. Seamless, hand-finished design with LCD touchscreen controls offers an ideal combination of clean styling and ease of operation. The control has a proximity sensor that illuminates the screen as soon as you approach and automatically switches off when you walk away.

Professional convection wall ovens with electronic dial controls



ZET2PMSS 30" stainless steel professional double oven
Dimensions: 29-3/4" W x 52-7/8" H x 23-1/2" D



ZET1PMSS 30" stainless steel professional single oven
Dimensions: 29-3/4" W x 28-1/4" H x 23-1/2" D



Professional styling. Sculptural lines, chamfered edges and electronic dial controls of die-cast metal give depth and dimension to the premium-grade stainless steel surface.

Integrated convection wall ovens with electronic dial controls general features

Exclusive self-clean, full-extension oven racks glide in and out on stainless steel ball bearings for easy access. The adjustable, heavy-duty racks with porcelain coating are designed to remain in the oven during the self-clean cycle.

Halogen light columns on both sides of the oven enhance visibility, providing a clear view of food regardless of rack position.

Reverse-Air convection system uses dedicated elements and a bidirectional fan to provide consistent temperature throughout the oven.

Six-element design—two bake, two broil and two convection—provides precise cooking control, with fast preheating.

4.4-cu.-ft. total capacity accommodates even the largest meals, and true hidden bake elements add flexibility by allowing easy ash removal after the self-clean cycle.

Electronic convection wall ovens



ZET958SFMS
30" stainless steel double
convection oven
Dimensions: 29-3/4" W x 52-7/8" H x 23-1/4" D



ZET958BMBB
30" black double
convection oven



ZEK958SMSS
27" stainless steel double
convection oven
Dimensions: 26-5/8" W x 51" H x 23-1/4" D



ZEK958BMBB
27" black double
convection oven



ZET938SMSS
30" stainless steel single
convection oven
Dimensions: 29-3/4" W x 28-1/4" H x 23-1/4" D



ZET938BMBB
30" black single
convection oven



ZEK938SMSS
27" stainless steel single
convection oven
Dimensions: 26-5/8" W x 29" H x 23-1/4" D



ZEK938BMBB
27" black single
convection oven

Electronic convection wall oven general features

Sophisticated styling. Seamless, hand-finished doors and smooth controls offer a look of modern refinement.

Electronic glass touch controls. A gentle touch allows you to easily select the desired cooking function: convection bake or roast, variable or closed-door broiling, 24-hour delay bake, warm mode or proof mode.

Reverse-Air convection. A bidirectional fan delivers exceptionally consistent cooking performance, allowing heated air to circulate on all sides of food.

Self-clean racks. Porcelain-coated racks are designed to be left in the oven during the self-clean cycle for effortless cleaning.

Halogen lighting. Two halogen lights illuminate your culinary work in progress, putting it into bright, clear perspective.

Concealed bake element. A smooth surface simplifies ash removal after the self-clean cycle.



Certified Sabbath mode—all Monogram® wall ovens



Built-in speedcooking wall ovens

When time is of the essence, Monogram® built-in Speedcook ovens give you the time—and technology—you need to rise to the culinary occasion.

Using the power of intense halogen light, Advantium® ovens do what no other oven has done before—deliver delicious results in minutes.

Trivection technology combines a trio of heating methods to transform everyday cooking. Thermal, convection and microwave processes work in concert to quickly roast, bake and broil foods to delicious perfection.



Integrated wall ovens with Trivection® technology



ZET3058SHSS
30" stainless steel
double oven
Dimensions: 29-3/4" W x 52-7/8" H x 23-1/2" D



ZET3058BHBB
30" black
double oven

A trio of heating methods—thermal heating, Reverse-Air convection and microwave energy.

Foods are prepared to delectable perfection—an average up to five times faster than a conventional oven.



ZET3038SHSS
30" stainless steel
single oven
Dimensions: 29-3/4" W x 28-1/4" H x 23-1/2" D



ZET3038BHBB
30" black
single oven

Integrated wall ovens with Trivection technology general features

Sleek, integrated design provides a striking look with clean lines and smooth, glass-touch controls.

In addition to award-winning Trivection technology, these ovens offer several other cooking methods and modes: baking, broiling, roasting and true convection, as well as 24-hour delay bake, warm mode and proof mode.

Full-size oven capacity. The spacious oven interior makes room for foods ranging from large roasts to rich, multi-tiered cakes and everything in between.

Electronic, touch-activated controls. Standard recipe temperatures and cooking times are automatically converted to proper Trivection settings.

Halogen lighting. Two halogen lights illuminate your culinary work in progress.

Wall ovens with Advantium Speedcook technology

Integrated



ZSC2201NSS stainless built-in oven with Advantium Speedcook technology



ZSC2200NBB black built-in oven with Advantium Speedcook technology

Professional



ZSC2202NSS stainless steel built-in oven with Advantium Speedcook technology

Dimensions: 29-3/4" W x 19" H x 21-1/2" D

Wall ovens with Advantium Speedcook technology general features

Four powerful ovens in one. More powerful than ever before, new Monogram Advantium ovens offer four distinct cooking modes—Speedcook, true European convection, sensor microwave and warming.

Speedcook technology. High-intensity halogen light combined with ceramic and radiant heating elements rapidly cook the outside of foods, sealing in natural juices. At the same time, microwave energy works to evenly cook the inside. No preheating required.

Spacious interior. Large 1.7-cu.-ft. oven cavity with 16" turntable easily accommodates roasts or 9" x 13" casserole dishes, and a removable rack allows for multi-level convection baking.

Easy-to-use controls. The control dial smoothly turns in both directions, making it easy to select from more than 175 preprogrammed recipes. For added convenience, Demo and Help programs guide you through the simple process of choosing a programmed recipe or customizing your own

Optional storage drawer, ZX2201NSS. For integrated models, this drawer keeps extra trays within easy reach.

Wall ovens with Advantium 120 Speedcook technology



ZSC1001KSS stainless steel, built-in oven with Advantium 120 Speedcook technology



ZSC1000KBB black, built-in oven with Advantium 120 Speedcook technology

Dimensions: 26-3/4" W x 18-5/8" H x 21-1/2" D without trim.
29-3/4" W x 18-5/8" H x 21-1/2" D with trim.

Wall ovens with Advantium 120 Speedcook technology general features

Four powerful ovens in one. Multiple cooking modes—Speedcook, true European convection, sensor microwave and warming—allow you to bake, broil, brown, roast, warm and proof foods.

Speedcook technology. Halogen-light system speedcooks your favorite foods to delicious perfection—in minutes, with no preheating.

Powerful performance. Oven-quality foods cook up to four times faster than a conventional oven, with no preheating required.

Spacious interior. 1.6-cu.ft., rounded oven cavity and 16" turntable allow full and continual rotation of a 9" x 13" casserole dish. Removable oven rack offers the convenience of multi-level cooking.

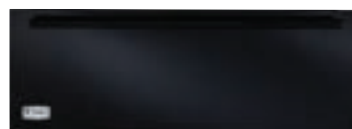
Sophisticated styling. Clean lines offer a stylish, modern look that coordinates beautifully with other Monogram built-in cooking products.

Installation flexibility. Ovens can be installed in a 27" or 30" wall cabinet (with included trim kit).

Warming drawers



ZTD910SFSS
30" stainless steel
ZKD910SFSS
27" stainless steel



ZTD910BFBB
30" black
ZKD910BFBB
27" black



ZXD30P
stainless steel
professional panel
kit fits 30" models

30" dimensions: 30" W x 10-1/2" H x 23-1/4" D
27" dimensions: 26-3/4" W x 10-1/2" H x 23-1/4" D

Warming drawer general features

Sophisticated styling. Built-in design with hidden controls offers a look of understated elegance. For a personal statement, customize the drawer with a cabinet-compatible wood panel and your choice of handles.

Temperature settings. Monogram warming drawers offer a range of temperature options, from a proof setting (approximately 75°F) to a high setting (approximately 230°F).

Humidity control. By opening or closing the warming drawer vent, you can keep foods crisp or maintain moisture.



Built-in refrigerators

Monogram® built-in side-by-side refrigerators have always made an exquisite statement of beauty and craftsmanship, but our newest collection demonstrates that what's inside can be equally outstanding. Every model—including custom, integrated and professional styles in 48", 42" and 36" configurations—has been redesigned with brighter lighting and more usable interior space.



Built-in side-by-side refrigerators

Integrated

Sleek stainless appearance. Heavy-gauge 304 stainless steel extends completely across the doors, wrapping beautifully around the edges. Long, slim tubular handles enhance the overall look and feel.



48" side-by-side refrigerator

ZISS480DXSS
48" stainless steel, 30.7-cu.-ft. refrigerator with dispenser

ZISS480NXSS
48" stainless steel, 30.6-cu.-ft. refrigerator without dispenser
Dimensions: 48" W x 84" H x 23-7/8" D



42" side-by-side refrigerator

ZISS420DXSS
42" stainless steel, 26.1-cu.-ft. refrigerator with dispenser

ZISS420NXSS
42" stainless steel, 26.0-cu.-ft. refrigerator without dispenser
Dimensions: 42" W x 84" H x 23-7/8" D



36" side-by-side refrigerator

ZISS360DXSS
36" stainless steel, 21.7-cu.-ft. refrigerator with dispenser

ZISS360NXSS
36" stainless steel, 21.6-cu.-ft. refrigerator without dispenser
Dimensions: 36" W x 84" H x 23-7/8" D



Professional

Professional appearance. The premium-grade 304 stainless steel exterior conveys both a sense of solidity and beauty with heavy-duty tubular handles, louvered grille and chamfered, hand-finished edges.



48" professional side-by-side refrigerator

ZISP480DXSS
48" stainless steel, 30.7-cu.-ft. refrigerator with dispenser
Dimensions: 48" W x 84" H x 23-7/8" D



42" professional side-by-side refrigerator

ZISP420DXSS
42" stainless steel, 26.1-cu.-ft. refrigerator with dispenser
Dimensions: 42" W x 84" H x 23-7/8" D

Custom

Customization. Personalization with cabinet-compatible panels sets the stage for a truly distinctive kitchen.



48" side-by-side refrigerator

ZIS480NX

48"-wide, 30.6-cu.-ft. non-dispenser refrigerator. Stainless steel and black door panels available.

ZISB480DX

48"-wide, 30.7-cu.-ft. refrigerator with black dispenser. Stainless steel and black door panels available.

ZISW480DX

48"-wide, 30.7-cu.-ft. refrigerator with white dispenser. Stainless steel or black door panels available.

Dimensions: 48" W x 84" H x 23-7/8" D

Custom wood panels and handles can be ordered from your cabinet maker.



42" side-by-side refrigerator

ZIS420NX

42"-wide, 26.0-cu.-ft. non-dispenser refrigerator. Stainless steel and black door panels available.

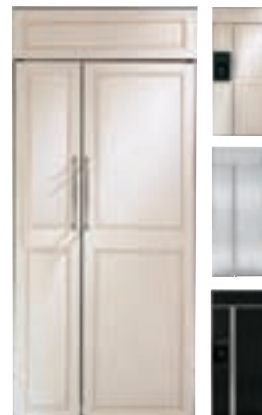
ZISB420DX

42"-wide, 26.1-cu.-ft. refrigerator with black dispenser. Stainless steel and black door panels available.

ZISW420DX

42"-wide, 26.1-cu.-ft. refrigerator with white dispenser. Stainless steel and black door panels available.

Dimensions: 42" W x 84" H x 23-7/8" D



36" side-by-side refrigerator

ZIS360NX

36"-wide, 21.6-cu.-ft. non-dispenser refrigerator. Stainless steel and black door panels available.

ZISB360DX

36"-wide, 21.7-cu.-ft. refrigerator with black dispenser. Stainless steel and black door panels available.

ZISW360DX

36"-wide, 21.7-cu.-ft. refrigerator with white dispenser. Stainless steel and black door panels available.

Dimensions: 36" W x 84" H x 23-7/8" D

Side-by-side refrigerators general features

Climate-control drawer chills beverages in minutes, thaws meats in hours and helps preserve a variety of fresh foods.

Direct airflow allows independent cooling of the generously sized fresh-food and freezer compartments.

Halogen-light columns extend the full length of the interior cabinet providing illumination to every shelf and drawer.

Drop-down shelf provides additional space for a casserole dish or pizza box.

Dispenser with proximity sensor lights up as you approach and automatically switches off when you walk away.



As an ENERGY STAR partner, GE has determined that all Monogram side-by-side dispenser refrigerators meet the ENERGY STAR guidelines for energy efficiency.

Optional kit, ZSAB1, allows Monogram side-by-side refrigerators to convert to Sabbath mode.



Built-in and free-standing refrigerators

Craftsmanship is a hallmark of the Monogram Collection™, and this is perfectly evidenced in the exquisite quality and artistry of Monogram®

built-in bottom-freezer refrigerators.

Available in stainless steel, custom and professional designs, these refrigerators are the perfect choice for homes with a fresh-food focus.

Equally captivating is the new French-door, two-drawer refrigerator, which freshly reinterprets the classic armoire configuration. For a full array of custom options inside and out, choose an all-refrigerator and all-freezer with cabinet-compatible panels and door handles. The possibilities are endless.



Built-in bottom-freezer refrigerators

Custom



ZIC360NXLH

36"-wide, 20.6-cu.-ft. refrigerator with left-hinged door (stainless steel and black door panels available; custom wood panels can be ordered from your cabinetmaker)

ZIC360NXRH

36"-wide, 20.6-cu.-ft. refrigerator with right-hinged door (stainless steel and black door panels available; custom wood panels can be ordered from your cabinetmaker)

Dimensions: 36" W x 84" H x 23-7/8" D

Integrated



ZICS360NXLH

36"-wide, stainless steel 20.6-cu.-ft. refrigerator with left-hinged door

Dimensions:

36" W x 84" H x 23-7/8" D

ZICS360NXRH

36"-wide, stainless steel 20.6-cu.-ft. refrigerator with right-hinged door

Dimensions:

36" W x 84" H x 23-7/8" D

Professional



ZICP720SS

72"-wide, stainless steel 41.2-cu.-ft. refrigerator

Dimensions: 72" W x 84" H x 28-11/16" D



ZICP360NXLH

36"-wide, stainless steel

20.6-cu.-ft. refrigerator with left-hinged door

Dimensions:

36" W x 84" H x 28-11/16" D



ZICP360NXRH

36"-wide, stainless steel

20.6-cu.-ft. refrigerator with right-hinged door

Dimensions:

36" W x 84" H x 28-11/16" D

Bottom-freezer general features

Advanced temperature management system with upfront electronic controls delivers cool, fresh air to every shelf and door bin.

Humidity-controlled vegetable compartments and sealed snack pans help maximize food freshness.

Split and adjustable shelves allow convenient access to contents in the fresh-food compartment.

Large, full-extension freezer drawer has an automatic icemaker with GE water filtration, as well as storage bins that slide out independently of one another for easy loading and unloading.

Adjustable, gallon-size door bins provide room for milk containers and two-liter bottles.



As an ENERGY STAR partner, GE has determined that all 36" Monogram bottom-freezer refrigerators, all-refrigerator and all-freezer models meet the ENERGY STAR guidelines for energy efficiency.

Optional kit, ZSAB1, allows Monogram bottom-freezer refrigerators to convert to Sabbath mode.

monogram.com/sweets

Built-in all-refrigerators and all-freezers

Custom



ZIR360NXLH

36"-wide, 21.5-cu.-ft. all-refrigerator with left-hinged door (stainless steel and black door panels available; custom wood panels can be ordered from your cabinetmaker)

ZIR360NXRH

36"-wide, 21.5-cu.-ft. all-refrigerator with right-hinged door

ZIF360NXRH

36"-wide, 21.5-cu.-ft. all-freezer with left-hinged door

ZIF360NXLH

36"-wide, 21.5-cu.-ft. all-freezer with right-hinged door

Dimensions: 36" W x 84" H x 24-3/4" D

Integrated



ZIRS360NXLH

36"-wide, stainless steel 21.5-cu.-ft. all-refrigerator with left-hinged door

ZIRS360NXRH

36"-wide, stainless steel 21.5-cu.-ft. all-refrigerator with right-hinged door

ZIFS360NXLH

36"-wide, stainless steel 21.5-cu.-ft. all-freezer with left-hinged door

ZIFS360NXRH

36"-wide, stainless steel 21.5-cu.-ft. all-freezer with right-hinged door

Dimensions: 36" W x 84" H x 24-3/4" D

Professional



ZIRP360NXRH

36"-wide, stainless steel 21.5-cu.-ft. all-refrigerator with right-hinged door

ZIRP360NXLH

36"-wide, stainless steel 21.5-cu.-ft. all-refrigerator with left-hinged door

ZIFP360NXRH

36"-wide, stainless steel 21.5-cu.-ft. all-freezer with right-hinged door

ZIFP360NXLH

36"-wide, stainless steel 21.5-cu.-ft. all-freezer with left-hinged door

Dimensions: 36" W x 84" H x 24-3/4" D

All-refrigerator and all-freezer general features

Fresh food drawers. Glide open smoothly, providing convenient access to contents. All drawers can be removed for easy cleaning.

Slimmer, digital control panel. Frees up space on the top shelf, making room for tall bottles and containers.

New ice drawer. In the freezer makes it easier for everyone in the family to stay refreshed throughout the day.

Enhanced temperature-management system. With precise electronic controls and thermistors maintains ideal storage conditions for fresh and frozen foods.

Versatile configuration. Allows models to be built into cabinetry, without the need for additional trim kits. Depending on your space and lifestyle needs, models can be installed individually or alongside one another.

Free-standing side-by-side refrigerators



ZFSB23DXSS

36"-wide, 23.0-cu.-ft. counter-depth refrigerator with dispenser

Dimensions:

36" W x 72" H x 30-1/2" D



ZFSB25DXSS

36"-wide, 25.0-cu.-ft. counter-depth refrigerator with dispenser

Dimensions:

36" W x 72" H x 29-1/2" D

Allover stainless appearance. At once dramatic and restrained, Monogram® stainless steel-wrapped refrigerators are smooth from edge to edge, with no exposed screws or rivets. The counter-depth design aligns nearly flush with surrounding cabinetry.

Precise temperature management. A dual-evaporator system with multi-shelf air tower helps maximize food freshness throughout the fresh-food and freezer compartments.

Flexible storage. In the fresh-food compartment, adjustable shelves and door bins offer quick and easy access to contents. Full-extension freezer baskets enhance storage convenience.

Free-standing French-door/2-drawer refrigerators

Integrated



ZFGB21HXSS

36"-wide, stainless steel 21.0-cu.-ft. counter-depth refrigerator

Dimensions:

35-7/8" W x 69-5/8" H x 29-1/2" D

Professional



ZFGP21HXSS

36"-wide, stainless steel 21.0-cu.-ft. counter-depth refrigerator

Dimensions:

35-7/8" W x 69-5/8" H x 30-1/4" D

Armoire-style configuration. Includes two doors that open at the center, positioned above two pull-out drawers.

Advanced temperature-management system. With precise electronic controls maintains ideal storage conditions for fresh and frozen foods.

GE Reveal interior lighting Casts a clear, brilliant glow throughout the refrigerator.

Adjustable, slide-out spillproof shelves. Including a retractable shelf—allow you to customize interior storage to maximize usable space.

GE water filtration system. Provides clean, fresh-tasting water for the internal dispenser and freezer icemaker.



Refrigeration modules

Compact, convenient and remarkably

versatile, Monogram® refrigeration

modules set the stage for luxurious

living and entertaining. In dining

room, kitchen or at the center of your

social occasions, these appliances

provide refreshing access to foods

and beverages of all types and sizes.

Most models give you the option of a

stainless steel or custom wood-paneled

appearance, and all are designed to

fit the same opening as a standard

dishwasher.



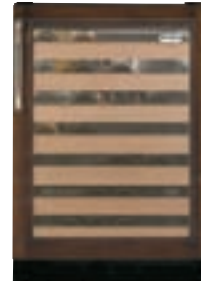
Wine reserves



ZDWT240PBS Wine reserve with privacy glass



ZDWR240PBS Wine reserve with digital control



ZDWI240WII Custom panel wine reserve with digital control



ZDWC240NBS Wine chiller with dial control

Privacy glass. Innovative liquid-crystal technology allows you to turn glass from translucent to transparent with a simple press of a button. Opaque setting conceals contents from view.

Temperature control. Digital touch controls allow you to select precise temperature settings, which are essential for proper wine storage.

Storage convenience. Full-extension sliding racks store up to 57 wine bottles and keep them close at hand.

Flexible installation. The free-standing wine reserve may be built into cabinetry, and the door swing is easily reversed as needed.

Dimensions: 23-3/4" W x 34-1/4"-34-3/4" H x 23-3/4" D

Beverage center



ZDBT240PBS Beverage center with privacy glass



ZDBR240PBS Beverage center with digital control



ZDBI240WII Custom panel beverage center with digital controls



ZDBC240NBS Beverage center with dial control

Privacy glass. Innovative liquid-crystal technology allows you to turn glass from translucent to transparent with a simple press of a button. Opaque setting conceals contents from view.

Temperature control. Digital touch controls provide precise temperature settings for cooling of all types of beverages.

Storage convenience. Three removable glass shelves, including a QuickSpace™ shelf, and two full-extension wine racks hold up to 10 wine bottles, as well as 12-ounce cans, quart-size bottles, and two-liter plastic containers.

Flexible installation. The free-standing beverage center may be built into cabinetry, and the door swing is easily reversed as needed.

Dimensions: 23-3/4" W x 34-1/4"-34-3/4" H x 23-3/4" D

Double-drawer refrigerator



ZIDS240PSS
Stainless steel



ZIDI240WII
With stainless professional
panel ZKD P240



ZIDI240PII
Custom panel

Temperature control. Digital touch controls maintain a consistent temperature for the upper and lower drawers, and an LED display allows you to monitor the temperature at a glance.

Storage convenience. A fold-down shelf, adjustable dividers and removable bottom-drawer bin maximize storage space and flexibility, allowing room for whole melons or large turkeys. The top drawer can hold up to 72 twelve-ounce cans, and the bottom drawer has room for eight two-liter bottles.

Interior lighting. Brilliant full-width LED lighting in both drawers puts contents into clear view.

Flush installation. The built-in configuration allows seamless integration with surrounding cabinetry. Model ZIDI240PII accepts custom 3/4" panel and handle for a personalized look. For kitchens with a gourmet focus, a new professional stainless steel panel, ZKDP240, is available.

Dimensions: 23-3/4" W x 34-1/4"-34-3/4" H x 23-3/4" D

Bar refrigerator with icemaker



ZIBS240PSS
Stainless steel



ZIBI240PII
Custom panel



Automatic icemaker. Self-contained icemaker features a removable ice bin on full-extension slides and a heavy-duty ice scoop for serving convenience.

Temperature control. Digital touch controls allow a range of temperature settings for different cooling needs, and an LED display makes settings clearly visible.

Storage convenience. Beverage shelf on full-extension slides holds up to five wine bottles or ten 12-ounce cans, while spillproof glass shelves provide ample space for fresh foods and beverages.

Flexible installation. The free-standing bar refrigerator stands beautifully on its own, or may be built into cabinetry. Model ZIBI240PII accepts custom 3/4" panel and handle for a personalized look.

Dimensions: 23-3/4" W x 34-1/4"-34-3/4" H x 23-3/4" D

Fresh-food refrigerator



ZIFS240PSS Stainless steel,
right-hinged door



ZIFI240PII Custom panel,
right-hinged door



ZIFS240PLSS Stainless steel,
left-hinged door

ZIFI240PLII Custom panel,
left-hinged door

Temperature control. Digital touch controls offer a range of temperatures for precise chilling of a variety of fresh foods and beverages, and an LED display allows easy viewing of temperatures.

Storage convenience. Removable, spillproof glass shelves, along with a QuickSpace shelf and a clear Lexan® crisper on full-extension slides, provide easy access to contents.

Flexible installation. The free-standing fresh-food refrigerator stands beautifully on its own, or may be built into cabinetry. Model ZIFI240PII accepts a custom 3/4" panel and handle for a personalized look.

Dimensions: 23-3/4" W x 34-1/4"-34-3/4" H x 23-3/4" D

Outdoor/Indoor refrigerator



ZDOD240PSS stainless steel,
right-hinged door



ZDOD240PLSS stainless steel,
left-hinged door



Outdoor design. Sturdy, professional-grade stainless steel exterior stands up to the most demanding environmental conditions.

Temperature control. Digital touch controls maintain a proper climate for food preservation when outdoor temperatures range between 45°F and 120°F.

Storage convenience. Adjustable shelves and beverage racks allow flexible storage of fresh foods, drinks and condiments.

Door lock. Helps prevent unwanted access, ensuring the door remains closed.

Flexible installation. Finished on all sides in stainless steel, the outdoor/indoor refrigerator allows a wide range of installation possibilities outside and inside your home. For added flexibility, the top panel can be easily removed to allow built-in installation.

Dimensions: 23-3/4" W x 34-1/4"-34-3/4" H x 23-3/4" D



Fully integrated dishwashers

Like exquisitely crafted flatware or pristine bone china, new Monogram® dishwashers artfully demonstrate the beauty in utility. Whether it's a full-size dishwasher or a smaller model ideal for a bar area or galley kitchen, you'll have an appliance the blends seamlessly with your décor and life.



Fully integrated dishwashers with bulk dispense and xenon lighting



ZBD8920PSS Bulk-dispense stainless steel dishwasher with xenon lighting and steam prewash
Dimensions:
24" W x 34-35" H x 24" D



ZBD8900PII Bulk-dispense stainless steel dishwasher with xenon lighting, steam prewash, and custom wood panel and handle (which can be ordered from your cabinetmaker)
Dimensions:
24" W x 34-35" H x 24-3/4" D with panel



ZPRO0700S Stainless professional panel for use with models ZBD8900PII and ZBD6900PII

Fully integrated dishwashers



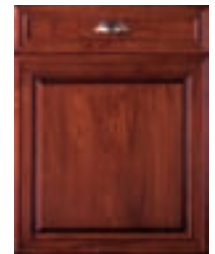
ZBD7920PSS
Stainless steel dishwasher with xenon lighting
Dimensions:
24" W x 34-35" H x 24" D



ZBD6920PSS
Stainless steel dishwasher



ZBD6910PBB
Black dishwasher



ZBD6900PII
Dishwasher with custom wood panel and handle (which can be ordered from your cabinetmaker)
Dimensions:
24" W x 34-35" H x 24-3/4" D with panel

Icemakers and compactors

When the need arises for an ample supply of ice, a Monogram icemaker responds beautifully. A Monogram compactor also meets large demands in a small space, making cleanup simple.

Fully integrated dishwashers general features

New wash system with multi-angle jets sprays and a high-heat steam option virtually eliminates the need for pre-rinsing.

Bulk-dispense technology holds an entire 47-oz. bottle of detergent, releasing the right amount throughout the wash cycle based on water hardness and soil level.

High-intensity xenon lights illuminate the entire interior, leaving no question as to whether or not dishes have been cleaned.

Quiet operation (48 dBA) is made possible by advance sound-absorbing materials and a smooth-running motor.



NSF Protocol for Sanitization and Cleaning Performance of Household Spray-Type Dishwashers (1997)

All full-size Monogram dishwashers are NSF-certified to reduce 99.999% of bacteria.

18" dishwasher



ZBD1870NSS
Stainless steel dishwasher
Dimensions:
17-3/8-18" W x 32-35" H x 24" D



ZBD1850NII
Dishwasher with custom wood panel and handle (which can be ordered from your cabinetmaker)

Flush installation. Allows the dishwasher to align with surrounding cabinetry.

Hidden, integrated electronic controls. Allow easy activation of wash cycles: heavy wash, normal wash, light wash, china and rinse only.

Pearlescent gray, nylon-coated racks. Provide plenty of space and loading flexibility. The lower rack includes a StemSafe™ feature for odd-shaped items and delicate stemware.

Five-level wash system. Provides effective, yet quiet, cleaning power.



All Monogram dishwashers meet ENERGY STAR® guidelines for energy efficiency and water conservation.

Icemakers



ZDIS150WSS 15" stainless steel automatic icemaker
Dimensions:
14-13/16" W x 34-34-1/2" H x 23-5/16" D



ZDIC150WWW 15" white automatic icemaker



ZDISC150WBB 15" black automatic icemaker

Compactors



ZCGS150LSS 15" stainless steel compactor



ZCGP150PII 15" custom panel compactor

Dimensions: 15" W x 33-3/4" H x 24" D

Icemaker feature

High production, large capacity. The icemaker produces up to 50 pounds of clear ice per day and automatically shuts off when the 25-pound-capacity bin is full.

Customization. The 15" icemaker door accepts a 3/4" custom panel to match surrounding cabinetry. You can also add your own custom handle.

Compactor feature

Fifteen-inch width. Fully integrated design with hidden controls, install flush with surrounding cabinetry.

Powerful pressure. Large 1.4-cu.-ft. capacity. Reduces trash volume by 80 percent, allowing easy transport and disposal.

Customization. For stainless steel model, order ZCGS150PSS. Model ZCGP150PII accommodates a 3/4" overlay panel and a custom handle.



Professional outdoor grills

The joy of outdoor cooking turns into pure exhilaration with a new Monogram® professional grill. Choose from free-standing and built-in gas configurations in a range of sizes, all designed with the same exceptional quality and attention to detail that distinguish Monogram professional appliances for the kitchen.



For faxable product features, dimensions and specifications on demand, call QuickSpecs at 800.432.3729.

Product improvement is a continuing endeavor at GE. Therefore, materials, appearance and specifications are subject to change without notice.

GE Consumer & Industrial
General Electric Company
Louisville, Kentucky 40225

© 2008 GE Company
PC55385

Built-in grills



ZGG540NBPSS (natural gas)
ZGG540LBPSS (liquid propane)
54" built-in grill with three burners, one sear burner and two rotisserie burners
Dimensions: 53-7/8" W x 26" H x 27" D



ZGG420NBPSS (natural gas)
ZGG420LBPSS (liquid propane)
42" built-in grill with two grill burners, one sear burner and one rotisserie burner
Dimensions: 41-7/8" W x 26" H x 27" D



ZGG300NBPSS (natural gas)
ZGG300LBPSS (liquid propane)
30" built-in grill with two grill burners and one rotisserie burner
Dimensions: 29-7/8" W x 26" H x 27" D

Free-standing grills



ZGG542NCPSS (natural gas)
ZGG542LCPSS (liquid propane)
54" free-standing grill with two grill burners, one sear burner, one rotisserie burner and integrated side burners
Dimensions: 53-7/8" W x 51" H x 27" D



ZGG540NCPSS (natural gas)
ZGG540LCPSS (liquid propane)
54" free-standing grill with three burners, one sear burner and two rotisserie burners
Dimensions: 53-7/8" W x 51" H x 27" D



ZGG420NCPSS (natural gas)
ZGG420LCPSS (liquid propane)
42" free-standing grill with two grill burners, one sear burner and one rotisserie burner
Dimensions: 41-7/8" W x 51" H x 27" D



ZGG300NCPSS (natural gas)
ZGG300LCPSS (liquid propane)
30" free-standing grill with two grill burners and one rotisserie burner
Dimensions: 29-7/8" W x 51" H x 27" D

23,000-BTU, ceramic-infrared searing burner. Delivers the high radiant heat needed to crisp and caramelize the outside of foods, locking in natural juices and flavors. Temperatures can be quickly adjusted to achieve the right degree of doneness.

Ceramic-infrared rotisserie burner. Allows you to slow-roast lamb, pork and other meats to succulent perfection. Stainless steel spit rod and claws included.

Ample grilling space. Is provided by a primary grate surface and retractable warming shelf. Both surfaces are made of rust-resistant stainless steel and are designed for even heat distribution.

Integrated illumination. Includes red LED lights above knob controls, along with interior halogen lighting for nighttime grilling.

Thoughtful storage areas. On free-standing models allow you to easily organize and compartmentalize grill accessories, such as the spit rod, claws, smoker box and other supplies.

Dual-burner cooktop



ZGU122NPSS (natural gas)
ZGU122LPSS (liquid propane)
Dual-burner cooktop
Dimensions: 13" W x 11" H x 26-1/2" D

Side burners. A pair of 15,000-BTU sealed side burners offers additional space for preparing pasta or boiling water. The burner grates are uniquely contoured on one side to hold woks.