



2009 Collection



Design responsibly.

The ECO Experience

For 10 years, ECOsurfaces has offered a fashionable selection of patterns and colors that make a unique design statement, without sacrificing the environment. In fact, ECOsurfaces was environmentally correct long before sustainable design made the scene. Our floors use post-industrial material - recycled tires - as their basic component. In addition, our ColorMill EPDM is made from pre-consumer waste and organic fillers. Everything is mixed and bound together using a water based polyurethane polymer. The entire manufacturing process is environmentally responsible using minimal water, avoiding heat, reusing in-line scrap to help eliminate waste and requires no smokestacks. The result is beautiful, environmentally savvy commercial flooring that passes the strictest tests for indoor air quality, low-VOC emissions and is recyclable.

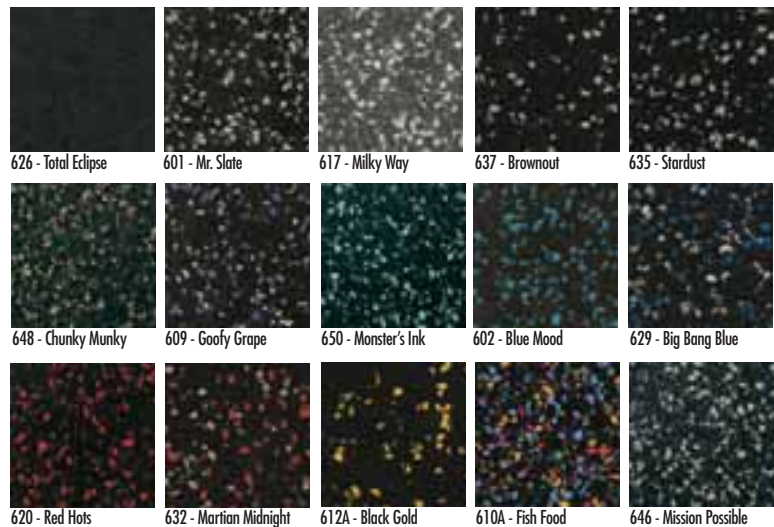
ECOsurfaces is manufactured by ECORE International, North America's largest user of scrap tire rubber. Each year ECORE recycles over 80 million pounds of scrap rubber saving over a million barrels of oil and keeping over 2,000 trailer loads of discarded tires out of our nation's landfills.

ECOsurfaces is distributed exclusively by Gerbert Limited, 800.828.9461 or visit www.gerbertltd.com.

ECOsand™



ECOnights®



This insert is meant to be a preview of the ECOsurfaces line. For more information and full product specifications please visit www.ecosurfaces.com.

NEW
ECOstars™

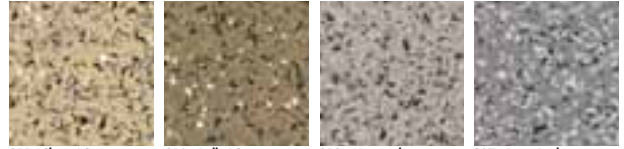


1102 - Mars Attacks! 1105 - Space Invaders 1100 - Star Search 1101 - Lost In Space



1103 - Jefferson Starship 1104 - Starway to Heaven 1107 - Spaceballs 1106 - Space Cadet

ECOstone®



811 - Sharin' Stone 810 - Rollin' Stone 812 - Moonrock 807 - River Rock

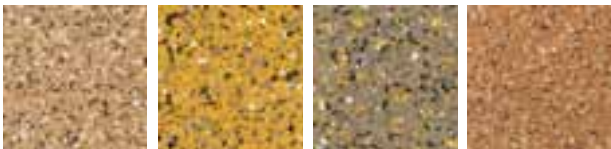


808 - Gravel Rock 801 - Brownstone 813 - Rockettes 805 - Roadrock

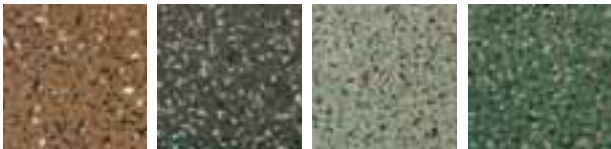


814 - Rock N' Coal 806 - Bedrock 815 - Stoned, Again 816 - Stone Cold Fox

ECOearth®



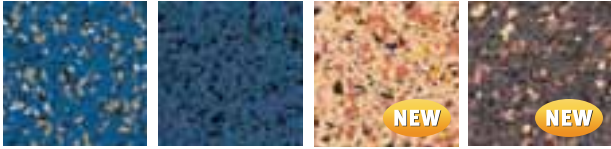
718 - Bit O' Hunny 709 - Pumpkin Patch 710 - Rare Earth 717 - Cinnamon Toast



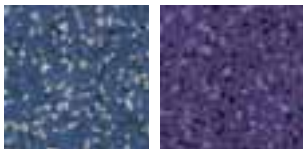
701 - Coffee & Cream 721 - Iced Frappuccino 719 - Cate Moss 720 - Appletini



704 - Brickhouse 716 - Hot Tamale 703A - Coal Porter 723 - Sun Dried Tomato



713 - Blue Danube 714 - Blue Bayou 724 - Cash is Clay 722 - Mudder Earth



715 - Blueberry Hill 708 - Mountain Majesty

ECORocks®





902 - Pebble Beach 903 - Big Boulder 905 - Granite Run 907 - Horseshoe Bay




909 - All Shook Up 910 - Jail House Rock 911 - Zuma 912 - Rocqua


ECOsand®, ECORocks®, ECOstone®,
 ECOearth®, ECOstars, ECONights®

Rolls
 48" x 1/8"
 48" x 1/4"
 Standard 50' rolls

Tiles
 36" x 36" & 18" x 18"
 Available in 1/8" & 1/4"

ECONights® for Sport

Rolls
 48" x 3/8" nominal
 Standard 50' rolls

Tiles
 36" x 36" & 18" x 18"
 Available in nominal 3/8"

Please see Gerbert Limited for details.





Warm Suite

Powerful, uplifting, stimulating, these are just some of the statements you can make by choosing colors from our Warm Suite. The vibrant hues of this collection are sure to deliver even your strongest design message, loud and clear. Try a dash of Hot Talmale, or Sun-Dried Tomato to spice up a room or liven things up with a combination of Coal Porter and Pumpkin Patch. Selections from our Warm Suite work great with both grey and tan. So go ahead, be a little daring, add some vitality to your next design project with colors from our Warm Suite.



● 632 Martian Midnight



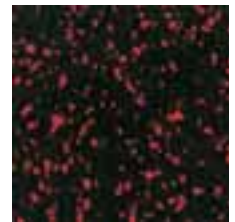
● 1001 Teaky Torch



● 1017 Old Bay



● 910 Jailhouse Rock



● 620 Red Hots



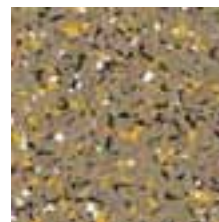
● 1018 Sunburn



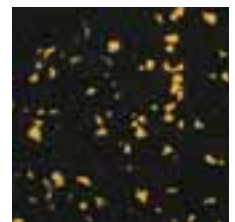
● 1006 Rock Lobster



● 1007 Coral Reef



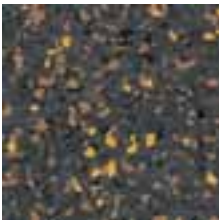
● 710 Rare Earth



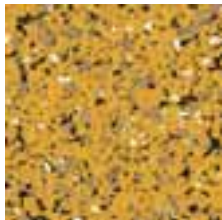
● 612A Black Gold



Color groupings are for design inspiration only. Please contact Gerbert Limited for pricing according to product lines.



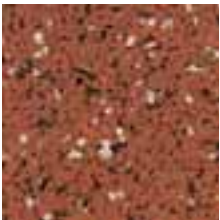
● 703 Coal Porter



● 709 Pumpkin Patch



● 716 Hot Tamale



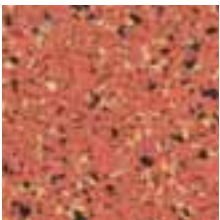
● 704 Brickhouse



● 1106 Space Cadet



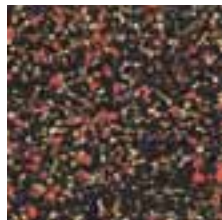
● 724 Cash is Clay



● 723 Sun Dried Tomato



● 816 Stone Cold Fox



● 1102 Mars Attacks!



● 1000 Beach Bum



● 717 Cinnamon Toast



● 1015 Coppertan



Cool Suite



● 1103 Jefferson Starship



● 714 Blue Bayou



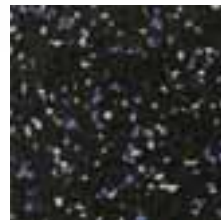
● 719 Cate Moss



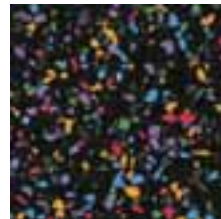
● 629 Big Bang Blue



● 1009 Sea Spray



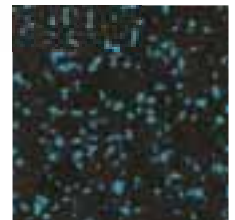
● 609 Goofy Grape



● 601A Fish Food



● 1020 Blue Lagoon



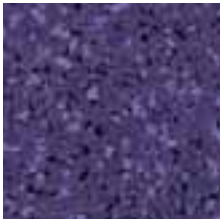
● 602 Blue Mood



● 721 Iced Frappuccino



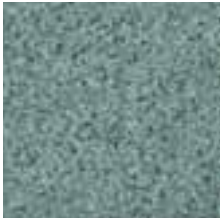
● 720 Appletini



● 708 Mountain Majesty



● 1104 Starway to Heaven



● 1008 Surfside



● 1010 Maliblu



● 1019 Neptune



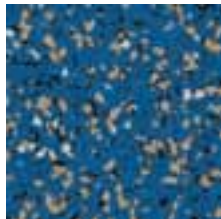
● 1105 Space Invaders



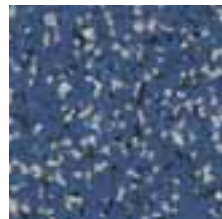
● 1021 Sea Foam



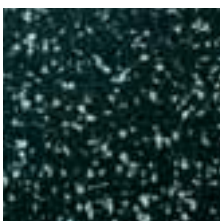
● 1011 Go Fish



● 713 Blue Danube



● 715 Blueberry Hill



● 650 Monsters Ink



● 1003 Riptide

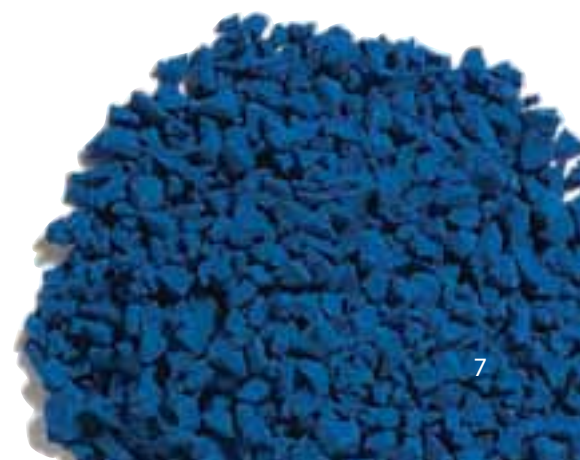


● 912 Rocqua



With color choices like Riptide, Appletini and Jefferson Starship, you know this collection has got to be cool. Use a variety of blues to chill out your space and design an environment that lends itself to serenity. Create a relaxed, tranquil setting with shades of green or mix and match colors like Iced Frappuccino and Surfside for a more subtle approach. Get playful with purple and blue, or go all out by accenting our Fish Food with vibrant primary colors. Whatever your design desire, you'll find inspiration in our Cool Suite.

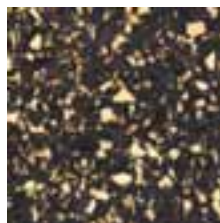
Color groupings are for design inspiration only. Please contact Gerbert Limited for pricing according to product lines.





Tan Suite

Add warmth and depth to your next project by incorporating choices from our Tan Suite. The rich golden undertones of our Bit O Honey and Sand Shark naturally lend themselves to chic, sophisticated designs. If you're looking for a more rustic effect, try Coffee & Cream or Mudder Earth to lend a homespun, organic touch to your space. Can't decide on just one? Combine several choices to achieve a calm, natural environment. Try pairing them with bright color accents to make a bolder statement or use them with cool complimentary choices for designs that really pop! Our Tan Suite gives you the tools you need to create a design that's anything but neutral.



● 1101 Lost in Space



● 903 Big Boulder



● 814 Rock N Coal



● 718 Bit O Honey



● 648 Chunky Munky



● 722 Mudder Earth

Color groupings are for design inspiration only. Please contact Gerbert Limited for pricing according to product lines.



● 811 Sharin Stone



● 646 Mission Possible



● 1016 Rum Runner



● 1014 Go Pound Sand



● 635 Stardust



● 902 Pebble Beach



● 1002 Sand Castle



● 1005 Sandpiper



● 907 Horseshoe Bay



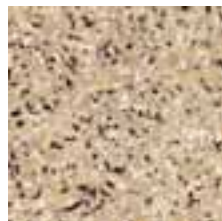
● 701 Coffee & Cream



● 813 Rockettes



● 909 All Shook Up



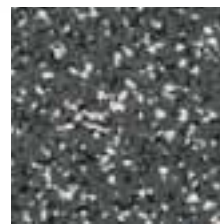
● 1013 Sand Shark



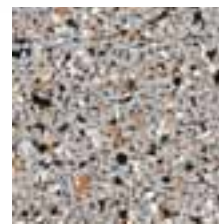


Grey Suite

Classic, confident and anything but boring, grey offers the ultimate in versatility - perfect for everything from your favorite pair of sweatpants to a corporate power suit. Within our spectrum of greys you'll find options to compliment any décor. Our Suite includes a variety of tones, from the natural warmth of our Rollin Stone to the silvery coolness of Granite Run. Combine them with vibrant color choices from our Warm or Cool Suites to create the perfect backdrop for dynamic designs. Or make your selection from our Grey Suite the primary color of your environment to fill your surroundings with sophisticated, understated confidence. With tints and shades ranging from Flock of Seagulls to Total Eclipse, you're sure to find the perfect choice for your next design project.



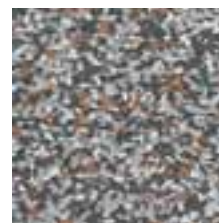
● 805 Roadrock



● 815 Stoned, Again



● 806 Bedrock



● 801 Brownstone



● 1100 Star Search



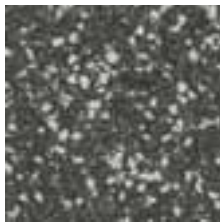
● 911 Zuma



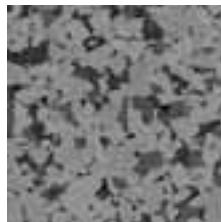
Color groupings are for design inspiration only.
Please contact Gerbert Limited for pricing
according to product lines.



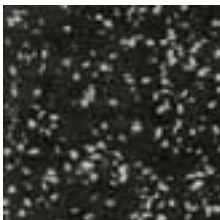
● 807 Riverrock



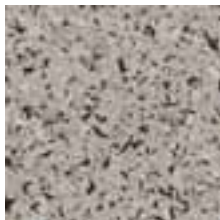
● 617 Milkyway



● 808 Gravelrock



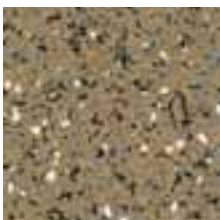
● 601 Mr. Slate



● 812 Moonrock



● 905 Granite Run



● 810 Rollin Stone



● 1012 Flock of Seagulls



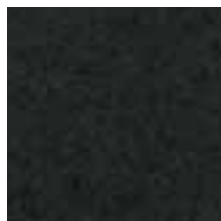
● 1004 Calamari



● 637 Brownout



● 1107 Space Balls



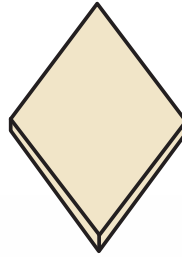
● 626 Total Eclipse



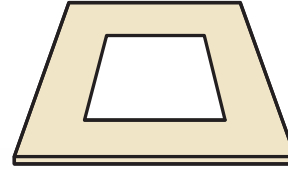
ECOshapes **NEW**

Available in three shapes:

Introducing ECOshapes, an exciting addition to the ECOsurfaces collection. These new shapes and patterns give designers a myriad of choices with out-of-the-box options for beautiful floor creations that are anything but ordinary.



22" 45° diamond



24" frame with
12" square cut out



12" square cut out

- **Available in 3 shapes:**

- 22" 45° diamond
- 12" square cut out
- 24" frame with 12" square cut out

- **All three shapes may be used together to create custom and unique patterns**

- **Available in six colors**

- **Additional colors and shapes coming in 2009**

- **Visit ecosurfaces.com for pattern inspirations**



Design Inspirations:

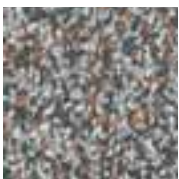


Features:

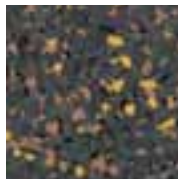
ECOshapes is available in 3 versatile shapes that work well together or alone. With 6 vibrant color options to choose from, ECOshapes makes creating dynamic patterns and flooring statements easier than ever.

Now you can achieve the look of a custom floor design with half the effort. Cover the entire floor with ECOshapes or use a combination of shapes as a border, as an accent or as a dramatic focal point. From bold and daring to subtle and refined, the shapes and colors of ECOshapes are guaranteed to compliment any interior. So go ahead, mix patterns, match shapes, with ECOshapes you're sure to create the perfect effect for your next design project.

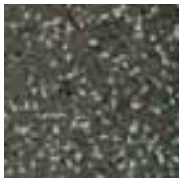
Available in six colors:



801 - Brownstone



703A - Coal Porter



721 - Iced Frappuccino



717 - Cinnamon Toast



701 - Coffee & Cream



811 - Sharin' Stone

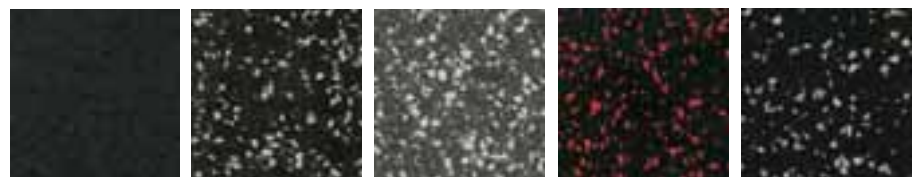
* Additional colors and shapes coming in 2009



EONights® for Sport

EONights for Sport is the perfect sports surface for corporate gyms and hospitality fitness centers. Our blade, spike and slip resistant floor makes it a great application for ice rinks as well. Available in nominal 3/8" thickness, EONights for Sport is the ultimate solution for any high impact space. Available in 9 different colors while elivering not only unmatched quality, performance and durability, but also the design options you need to enhance your high-energy environment.

EONights for Sport supports the ASTM Sustainability Assessment, enabling designers and specifiers to celebrate the green properties and sustainability of the product. Attributes include excellent slip resistance in both wet and dry conditions, superior durability, disguising dirt and stains extremely well, meeting the Washington State standard for low VOC emissions, and facilitating easy installation and maintenance.



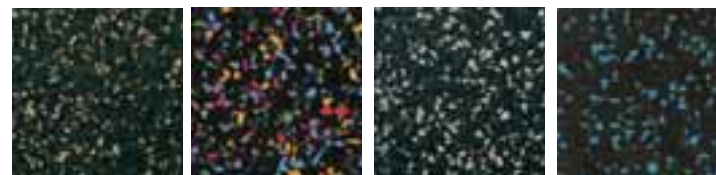
626 - Total Eclipse

601 - Mr. Slate

617 - Milky Way

620 - Red Hots

635 - Stardust






648 - Chunky Munky

610A - Fish Food

646 - Mission Possible

602 - Blue Mood

 <p>Rolls</p>	<p>48" x 3/8" nominal Standard 25' rolls</p>
 <p>Tiles</p>	<p>18" x 18" 3/8" nominal 36" x 36" 3/8" nominal</p>
 <p>Interlocking Tiles</p>	<p>24" x 24" & 47" x 47" Available in nominal 3/8" thickness</p>

Please see Gerbert Limited for details.

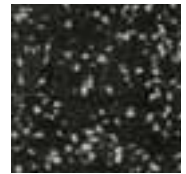


EONights® for ESD

Protect sensitive equipment from damage caused by electrostatic discharge with EONights for ESD. We've eliminated the shock by adding at least 80% black to our EONights sheet flooring. Choose from a generous selection of standard and custom colors for floor designs that are as beautiful as they are functional. Proper ESD installation instructions must be followed to meet ESD protective standards and performance.



626 - Total Eclipse



601 - Mr. Slate



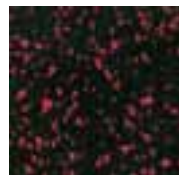
637 - Brownout



635 - Stardust



602 - Blue Mood




620 - Red Hots



620 - Martian Midnight



612A - Black Gold

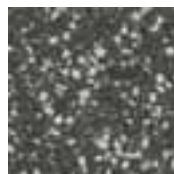
Rolls

 48" x 1/8"
 48" x 1/4"
 48" x 3/8" nominal
 Standard 50' rolls



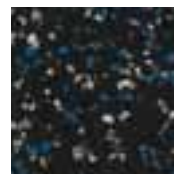
650 - Monster's Ink



646 - Mission Possible



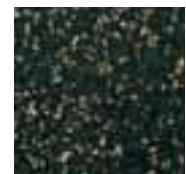
617 - Milky Way



629 - Big Bang Blue



609 - Goofy Grape



648 - Chunky Munky

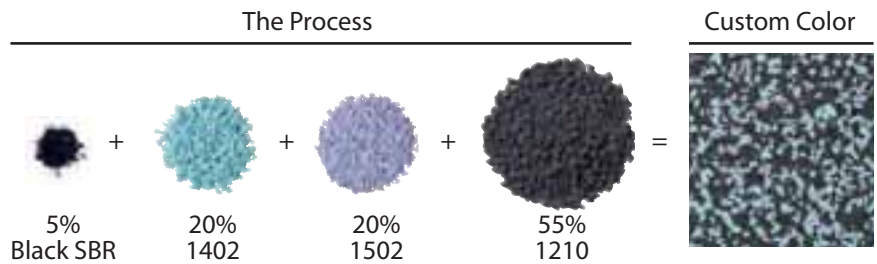
CustomLogos

If you can imagine it, we can create it. That's the concept behind our custom logos program. Create inspirational designs using simple borders and inserts, or make a bold statement with logos, symbols, or freeform shapes.



CustomColors

With ECOsurfaces' custom color program, there are no limitations to your imagination. We make it easy to find a color blend that's right for you and your environment. Create your own shade from our palette of 33 colors listed below.



ColorMill®

ECOsurfaces Commercial Flooring is made with ColorMill® EPDM, containing the highest quality materials to provide the best UV stability and abrasion resistance. ColorMill is one of only a few EPDM lines in the U.S.A. to boast recycled content. Our exclusive ColorMill process ensures that your design will feature the most vivid colors, contain low-VOCs and exhibit a smooth even finish. ColorMill EPDM is available in 45 colors. Contact an ECOsurfaces representative for more information about our custom capabilities.







ECOMax®

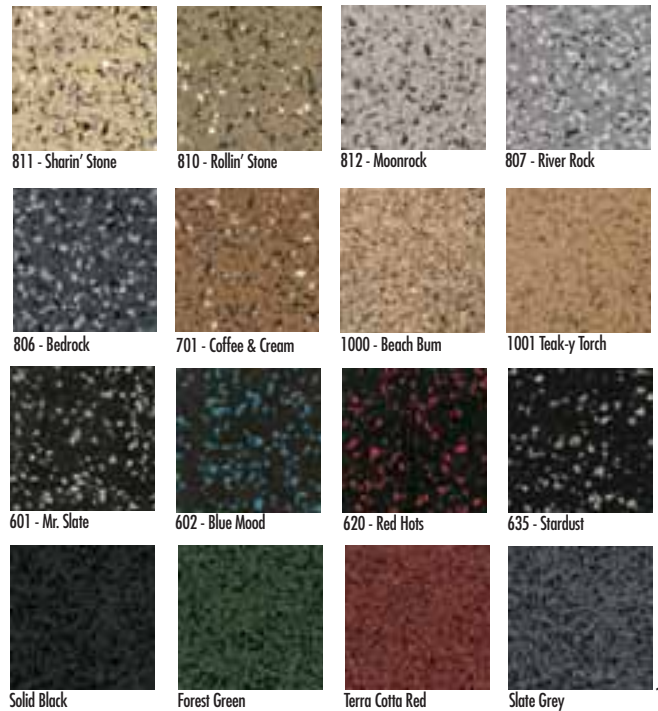
ECOMax modular tiles offer the ultimate in versatility, equally at home indoors and out, in dry conditions or in wet and slushy spaces. Originally designed for rooftops, patios, walkways and pool surrounds, ECOMax is also an excellent choice for weight rooms and workout areas. The footed tile system provides superb drainage and slip-resistance to help prevent slips and falls. Plus, ECOMax provides continuous underfoot comfort and support. Available in two thicknesses and sixteen beautiful colors, ECOMax is sure to meet all your performance needs while enhancing any decor.



Tiles

 2' x 2' x 1" thickness

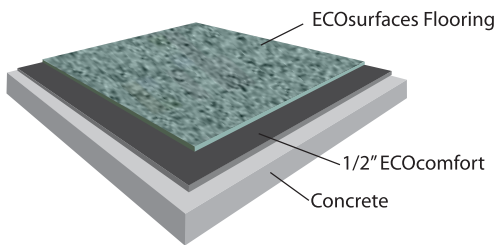
 2' x 2' x 2-1/2" thickness



ECOcomfort

Standing for hours on hard floors can take its toll on legs, feet and spines, but the cushioning properties of ECOcomfort's ergonomic underlayment makes those concerns a thing of the past. ECOcomfort provides the perfect blend of cushioning and support beneath practically any flooring surface. Plus, our exclusive Comfort Cell technology keeps its resilience year after year, unlike ordinary foam cushions. ECOcomfort is the perfect solution for retail, office, institutional and healthcare spaces.

- Works with all ECOsurfaces floors as well as other surfaces including carpet and resilient flooring
- Engineered for ultimate ergonomic comfort; reduces fatigue and injuries
- Easy to install; lasts for years



Rolls



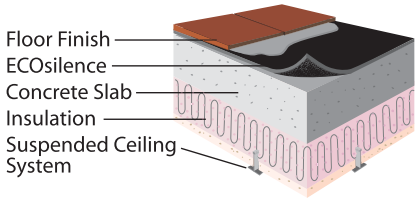
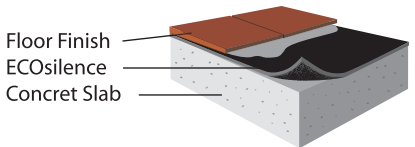
- 1/2", 1" and 1-1/4" thickness
- 48" wide rolls
- Standard 25' lengths



ECOsilence™


If sound is an issue, you'll want to pad your commercial space with ECOsilence. This resilient, flat underlayment can be installed directly beneath ECOsurfaces, vinyl, ceramic tile, hardwood or any other hard surface flooring. ECOsilence exceeds building code standards of IIC 50 and STC 50 with or without a suspended ceiling. ECOsilence does not require concrete topping and costly floor transitions, just use it directly under flooring surfaces in places like:

- Condominiums
- Apartments
- Exercise facilities
- Libraries
- Office buildings
- Hotels
- Schools



Rolls

- 48" x 5/32" Standard 50' rolls
- 48" x 3/8" nominal Standard 25' rolls



Assembly	ECOsilence	STC Rating	IIC Rating
With ceiling	5/32"	70	70
With ceiling	3/8"	70	71
No ceiling	3/8"	52	51

OUR GREEN STORY

As North America's largest user of scrap tire rubber, we salvage more than four million tires annually from landfills and convert them into product solutions for industrial and architectural applications.

We are an active member of the U.S. Green Building Council and other environmentally focused organizations, and have made "green" production and products our top priority. The ECOsurfaces collection of products is our environmentally-responsible solution for commercial flooring.

ECOsurfaces is manufactured by ECORE International™ and distributed nationwide by the specialty flooring experts at Gerbert Ltd. Representatives in 44 sales offices across the U.S. have made it their priority to respond quickly and creatively to the specialty flooring needs of architects, designers and facility managers.



Manufactured in the U.S.
by ECORE International



Distributed by:
Gerbert Limited
1-877-326-7873
www.ecosurfaces.com