



09 67 00/CRS  
BuyLine 6163

# INDUSTRIAL

*Floor and Wall Protective Overlay Systems*



All our colors are **Green.**



Manufacturing and Warehousing



Pharmaceutical and Institutional



Heavy Duty Industrial

# Crown Exclusives: CrownSpatter & CrownCove

## High Performance Polymer Floor Overlays With A Decorative Appearance

**CROWNCRETE™**  
SELF-LEVELING POLYMER CONCRETES

**Designed for industrial, manufacturing, packaging and warehouse facilities.**

**Fast turn around, seamless polymer concrete resurfacing overlay.**

**System Description:** CrownCrete™ MI modified novolac polymer concrete resurfacing floor overlays are resistant to abrasion, impact, hot spillages and chemicals common to industrial environments. CrownCrete™ MI is durable enough to endure thermal shock, aggressive high pressure, steam cleaning, scrubbing and is ideal for use wherever a sanitary environment is required. A variety of surface finishes are available, ranging from smooth to various degrees of nonslip. Surface profiling can be tailored to individual environments.

**Decorative or Chemical Resistant:** A variety of top wear systems are available to change the surface appearance and provide additional protection.

**Safety and Hygiene:** Antimicrobial CrownSilver™ provides sanitary protection using silver-ion technology to control the growth of bacteria and fungi on floor surfaces. It is recommended that CrownSilver™ be added to all CrownCrete™ overlays and top coats when these conditions exist.

**Recommended Use:** CrownCrete™ MI floor systems are ideal for use in indoor and outdoor environments including industrial, manufacturing, packaging and warehouse facilities and shipping docks.

**Fast Turn-Around:** CrownCrete™ MI provides extremely fast turn-around due to its rapid placement characteristics and fast cure. In addition, the physical and adhesion properties of CrownCrete™ MI exceed those of conventional concrete.

**CrownSpatter™**  
Products 312 & 313  
A New Kind of Polymer Floor

**Recommended Use:** For concrete, wood or steel floors such as those found in industrial settings, where a durable, seamless surface is desirable. Perfect for applications on forklift traveled aisles or work areas.

**System Description:** A spray-on floor that offers seamless, monolithic bond to the concrete. CrownSpatter offers hundreds, if not thousands, of colors in an infinite number of mottled, marbled, or speckled patterns. Consists of an epoxy base with a polyurea ultraviolet resistant top coat that yields an abrasion resistant, long lasting, easy to clean surface with permanent color. Ready for use within 24 hours. OSHA and ADA slip resistant compliant. Truly, a premium floor at an affordable price.

**CrownQuartz™**  
Product 306  
A Popular Industrial Floor

**Recommended Use:** For virtually any environment including institutional, manufacturing or assembly. Excellent for dry or continual wet environments with medium traffic usage. Adjustable surface profiles.

**System Description:** Pigmented colored quartz aggregate is mixed with an epoxy base coat and top coated with UV resistant polyurea to create a decorative and durable Epoxy Polymer Concrete. CrownQuartz is useable on interior and exterior concrete applications. Low Odor, fast cure systems are useable in 24 hours.



CrownShield® SL & CrownFlake™

**CrownFlake™, CrownChips™, CrownHybrid™, CrownBrindle™**  
Products SP632, 633, 644 & 645  
Create Those Special Atmospheres

**Recommended Use:** For concrete or wood floors such as those found in showrooms, garages, locker rooms, restaurants, hospitals and balconies, where a beautiful, durable, seamless surface is desirable on interior or outdoor uses.

**System Description:** The uniqueness of each of these polymer overlays is the size and shape of the vinyl flakes within each system. They are available in three distinct mixtures, each with a different look designed to create a special mood within any environment. Standard and custom solid colors and blends are available. Flakes are encapsulated in an epoxy base coat for superior adhesion. Top coat options include epoxy, polyurethane or polyurea. Durable safety walking surfaces exceed OSHA and ADA slip resistant requirements.

**CrownClear™ 50, 36 Epoxy**  
Products 324, 325, 326

**CrownPro™ 4, 6 Polyurea**  
Products 330, 331, 332, 333

**Wall Systems**  
Standard or Reinforced

**CrownCote™**  
Product 401 Epoxy

**CrownProCote™**  
Product 443 Polyurea



CrownPro™ Cote & CrownFlake Wall System

# Designed Specifically for Industrial and Commercial Facilities

## High Performance Protection for New or Restored Concrete Floors

### **CrownShield®** 50, 40, 28 & 40-2

Products 319, 320, 321, 322, 323  
Best All Around Floor System

**Recommended Use:** Used in the toughest heavy-duty industrial and manufacturing applications.

**System Description:** A family of high build pigmented epoxy polymers designed for a variety of environmental exposures. Curable on substrate temperatures from 28°F – 110°F (-2°C – 43°C), speed of cure from 2–12 hours. Applied as thin coatings or thick epoxy polymer concrete overlays. The finished floor appearance can be a solid color or random flaked. Ideal for applications where time is of the essence.

### **CrownShield®SL**

Product 315  
A Crown Polymers Exclusive!

**Recommended Use:** Ideal for light to heavy-duty commercial or industrial concrete surfaces requiring releveling or a thicker overlayment.

**System Description:** Self-leveling 1/8" or 3/16" epoxy polymer concrete overlay that becomes a monolithic part of the concrete. A non-porous aggregate filled overlay with high physical strength properties designed for interior or exterior use. The finished appearance when left as a smooth surface has a high reflective gloss, or a reduced gloss when textured. Add color flakes and a clear top coat to change from a tough industrial surface to a highly decorative finish.



CrownShield®SL

### **CrownPro™ SolventShield**

Product 351  
A High-Tech Protector

**Recommended Use:** For environments where solvent resistance is desirable.

**System Description:** Two component novolac aliphatic epoxy formula is a 100% solids, low odor, epoxy polymer concrete that becomes a monolithic part of the concrete. Available with ESD.

### **CrownPro™ SparkShield & CrownLiquidCopper™ Primer**

Product 353 & 352  
Reliable ESD Protection

**Recommended Use:** For floor & wall environments where there is danger of static electricity

**System Description:** When dependable ESD protection is needed, CrownPro SparkShield, static dissipating floor system, is a classic standard and is now improved with a new primer... CrownLiquidCopper. Complies with NFPA Static Electricity Dissipative Standards.

### **CrownPro™ ElectricShield**

Product 355  
Conductive Floor Protector

**Recommended Use:** For environments with danger of ignition due to explosive volatile chemicals, mixtures of gas, vapor, spray or fine dust.

**System Description:** 1/8 to 1/4 inch thick. Conductive epoxy polymer concrete with a conductive top coat. 100% solids. Broadcast, slurry broadcast or trowelable. Complies with NFPA Standards. Available in 10 colors.



CrownPro™ SparkShield & CrownLiquidCopper™

### **CrownEncap™**

A Waterproofing, Strengthening System

**System Description:** An EPC Overlay providing increased live load capabilities and hazardous material encapsulation.

### **CrownWear™ 20 EPC-LTC**

Product 202  
Low Temp Cure Down To 20°F (-7°C)

**Recommended Use:** For freezers, cold storage or outdoor environments.

**System Description:** Two component, 100% solids, epoxy polymer concrete.

### **CrownPro™ AcidShield**

Product 350  
Superior Acid Protection

**Recommended Use:** For environments where acid spills occur and acid resistance is desirable.

**System Description:** Two component, 100% solids, low odor, novolac epoxy coating or epoxy polymer concrete.

### **CrownPro™ EPC TempShield**

Product 356  
Protects Up To 450°F (232°C)

**Recommended Use:** Protects concrete substrates from hot and cold changing environments and withstands thermal shock without stressing the substrate.

**System Description:** A broadcast or trowelable 100% solids, low odor, non-shrink epoxy polymer concrete overlay that becomes a monolithic part of the concrete.



CrownPro™ AcidShield

# Improve Floor Longevity With Crown Polymers Support Products

## Vapor and Moisture Protection



CrownCove™

### **CrownCove™** Products 701, 704 & 706 Fast Around Corners & Straightaways

**Recommended Use:** A polymer precast floor-to-wall cove system is used for commercial, retail, institutional, and industrial applications with selected floor polymer or cementitious overlays. Its seamless design stops water, chemicals, insects, bacteria, debris, dirt and floor cleaning solutions from puddling or seeping into the floor-to-wall juncture. It's decorative and industrial tough. Placement is cost effective and faster than hand trowel methods – and always looks the same from start to finish.

**System Description:** A Crown exclusive. The cove system is a precast polymer base molding available in both 4 and 6-inch (100 and 150 mm) heights, with pre-formed pieces that create inside and outside corners. When CrownCove is coated or overlaid with polymers, the finished cove provides a uniform, seamless, integral floor-to-wall juncture; producing the most sanitary and easily maintained floors available.

### **CrownCant™** Product 707 **CrownCorner™** Protectors Product 708

### **CrownSilver™** Safety and Hygiene

**Product Description:** Antimicrobial CrownSilver provides sanitary protection using silver-ion technology to control the growth of bacteria and fungi on floor surfaces. It is recommended that CrownSilver be added to all overlays and top coats when these conditions exist.

### **CrownCote™** Vapor Barrier Product 303 Stop Vapor Transmission

**Recommended Use:** To stop vapor transmission through concrete floors when overlaid with hardwood floors, tile, carpet and Crown Polymers overlays.

**Product Description:** Ultra low viscosity modified 100% solids, non-solvent epoxy. Penetrates into the concrete, seals off, and prevents vapor transmission to the surface. Warranty available.

### **CrownFlex™** Membrane Product 304 Adds Extra Moisture Protection

### Load Bearing Control Joint Sealers

### **CrownFlex™** Joint Sealer Gel Grade Product 501 Non-sag consistency

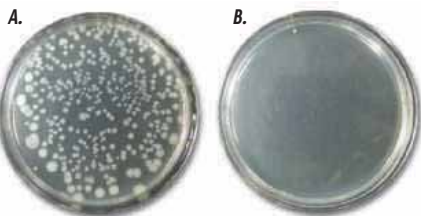
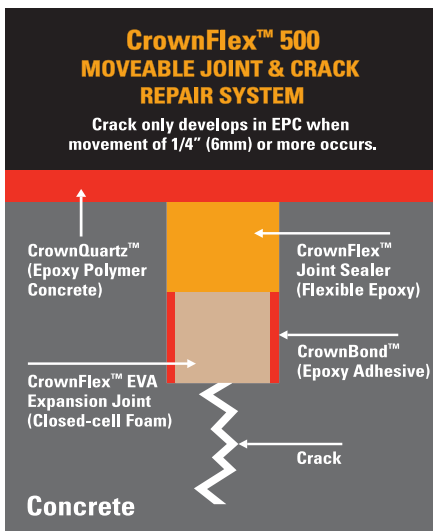
### **CrownFlex™** Joint Sealer Product 505 Pourable or Pumpable

### **CrownFlex™** 500 & **CrownFlex™** EVA Crack, Expansion Joint & Water-Stop

**Recommended Use:** Waterproof seal for expansion and isolation joints, including moving cracks in concrete. Stops water transfer and allows natural thermal movements or vibrations above and below the water line.

**System Description:** A composite of CrownFlex EVA, closed cell pre-formed foam, and CrownFlex Joint Sealer, a flexible epoxy. Each joint is designed to provide approximately a 100% safety factor in movement and waterproofing.

**Crack Repair, Patching, Regrading & Leveling Product Systems Comply With ASTM C881.**  
For more data on Epoxy Polymer Concretes, Coatings or Crack Repair see Crown Polymers' Product Data Sheets.



### **Escherichia coli Test Results.**

- A. Control Sample E-Coli 24 hours no treatment.
  - B. CrownSilver™ E-Coli 24 hours 99.999% control.
- Note: Staphylococcus aureus: Same results.



All our colors are Green.™

Call for the location of your nearest Crown Polymers representative.

888.732.1270 Toll Free



Crown Polymers, LLC.  
11111 Kiley Drive  
Huntley, Illinois 60142

info@crownpolymers.com  
www.crownpolymers.com

847.659.0300 Phone  
847.659.0310 Facsimile  
888.732.1270 Toll Free

**Limited Warranty** Crown Polymers, LLC warrants its products to be free of manufacturing defects, to be of good quality, and that they will meet Crown Polymers current published physical properties when applied in accordance with Crown Polymers written directions and tested in accordance with ACI, ASTM and Crown Polymers Standards. Product proved to be defective will be replaced. There are no other warranties by Crown Polymers, LLC of any nature whatsoever, expressed or implied, including any warranty of merchantability or fitness for a particular purpose in connection with this product. Crown Polymers, LLC shall not be liable for damages of any sort, including remote or consequential damages, resulting from any claimed breach of any warranty, whether expressed or implied, from any other cause whatsoever. Crown Polymers will not be responsible for use of this product in a manner to infringe on any patent held by others.