



The undisputed leader in door accessory hardware.

For more than 120 years Ives has produced a full line of top quality building hardware that delivers the utmost application flexibility and superior value. With a focus on product quality and world-class customer service, we give our customers exactly what they need for a tough, durable, attractive and complete door solution.

All our products are available in a full complement of architectural finishes that match all Schlage, Dexter by Schlage and Falcon hardware.

Contents

- Continuous Hinges
- Pivots
- Hinges
- Manual Flush Bolts
- Automatic Flush Bolts
- Constant Latch Flush Bolts
- Surface Bolts
- Lock Guards
- Coordinators
- Crash Stops
- Floor Door Stops and Holders
- Wall Door Stops and Holders
- Vandal-Resistant Trim
- Door Trim and Pulls
- Push Plates
- Door Protection Plates
- Handrail Brackets
- Dust-Proof Strikes
- Roller Latches and Catches

HINGES

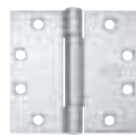
Ives offers a variety of standard and heavy weight hinges in three-knuckle plain bearing, spring hinge, concealed bearing and heavy weight concealed bearing configurations, as well as five-knuckle ball bearing, plain bearing, swing clear and ball bearing heavy weight designs and electrified hinges.



TW4, TW8, MON,
TW4M, TW8M



3SP1



3CB1



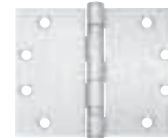
5BB1



5PB1



5BB1HW



5BB1WT



5BB1RC



3PB1



3CB1HW



5BB1SC



5BB1HT



5BB4

CONTINUOUS HINGES

Ives continuous hinges are designed to last the length of the building's life. The unique design distributes the weight of the door along the entire length of the frame, reducing the high amount of stress placed upon the top of a traditional butt hinge. Not only does this prevent hinge failure, it also keeps your door in constant alignment, eliminating the chance of door sag. These characteristics make continuous hinges suitable for high use/high traffic doors. In conjunction with self-lubricated bearings, Ives continuous hinges will make the heaviest doors feel light.

GEARED



112HD



224HD



157HD



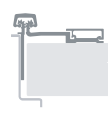
210HD



053HD



054HD

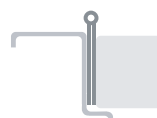


045HD



046HD

PIN AND BARREL



700/600



702/602



703



704



705



711/611



715

PIVOTS

Ives offers a wide range of heavy-duty pivots. Pivots are a great way to hang a door to support the weight of the doors or to withstand high-traffic installations.

Ives 7200 Series Pivots:

- Available for 3/4" (19mm) offset, 1-1/2" (38mm) offset, and center-hung applications.
- Brass and stainless steel models available in a wide range of plated and powder-coated finishes.
- Fire-rated models with the "F" suffix are rated for three-hour labeled fire doors.
- Precision bearings ensure smooth operation.
- Positive locking vertical adjustment mechanism allows the installer to precisely position the door and balance the load.

Also available: 91105F Pocket Pivot



7212 INT



7215 INT



7230 INT



7212



7226



7227



7253



7255



91105F



7215



7222



7255J



7256

Flush Bolts



MANUAL FLUSH BOLT

- UL/cUL Listed extension flush bolts
- FB358 is for use as top and bottom flush bolts to secure inactive leaf of a pair of swinging fire doors not exceeding 1-1/2 hour fire rating and 10' (254mm) in height.

- FB457 and FB458 brass models are for use on all types of labeled metal fire doors not exceeding three-hour fire rating and 10' (254mm) in height.



FB30/FB40 SERIES AUTOMATIC FLUSH BOLTS

- FB31P for hollow metal doors. Pair contains FB31T top bolt and FB31B bottom bolt. Non-handed. Top and bottom bolts not identical. Top bolt has no spring tension, minimizing the actuation force and providing a smooth, easy operation.
- FB32 consists of FB31T top bolt and an auxiliary fire latch which replaces the bottom bolt, eliminating floor prep and reducing required door prep. Auxiliary fire latch, mounted in the door edge, releases under extremely high temperatures to keep doors in alignment during a fire.
- FB31P and FB32 are UL/cUL Listed for pairs of metal fire doors rated up to three hours.
- FB33 updates existing flush bolt installations with auxiliary fire latch, eliminating bottom bolt and floor strike. FB33 consists of FB31T top bolt, auxiliary fire latch and filler plate to cover existing cutout when bottom bolt is removed.

- FB41P is UL/cUL Listed for pairs of wood fire doors rated up to 1-1/2 hours.
- FB41P for wood doors. Pair contains FB41T top bolt and FB41 bottom bolt. Non-handed. Top and bottom bolts not identical. Similar to FB31T design, FB41T top bolt has no spring tension and provides a significantly reduced activation force.
- FB42 is UL/cUL Listed for pairs of wood fire doors rated at 20 minutes.
- FB42 model consists of an FB41T top bolt and an auxiliary fire latch. This combination greatly reduces door prep and eliminates field problems caused by door warpage or changes in field conditions.



FB50/FB60 SERIES CONSTANT LATCH FLUSH BOLTS

- FB51P and FB61P Series incorporate a constant latching top bolt with automatic bottom bolt. FB51P models are UL/cUL Listed for use on pairs of metal fire doors rated up to three hours, while FB61P models are UL/cUL Listed for use on wood doors with ratings up to 1-1/2 hours.
- Bottom bolts identical to FB31P/FB41P models. Top bolts are designed to remain engaged until manually retracted. Inactive door automatically latched when closed.
- FB51P for hollow metal doors. Combines FB51T constant latching top bolt with FB31B automatic bottom bolt. Non-handed. FB52 combination includes FB51T top bolt and auxiliary fire latch, reducing door prep and eliminating floor prep.
- FB52 is UL/cUL Listed for pairs of metal fire doors rated up to three hours.

- FB53 used to update existing flush bolt installations with auxiliary fire latch, eliminating bottom bolt and floor strike. FB53 consists of FB51T top bolt, auxiliary fire latch and filler plate to cover existing cutout when bottom bolt is removed.
- FB61P is UL/cUL Listed for pairs of wood fire doors rated up to 1-1/2 hours.
- FB61P for wood doors. Combines FB61T constant latching top bolt with FB41B bottom bolt. FB62 combination includes FB61T top bolt with auxiliary fire latch. Non-handed. Significantly reduces door prep.
- FB62 is UL/cUL Listed for pairs of wood fire doors rated at 20 minutes.

COR SERIES

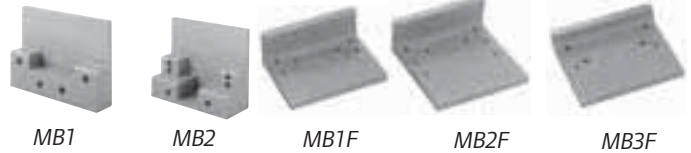
COR Series coordinators are designed to coordinate the closing of a pair of doors. Mounted on the stop strip, the active door level holds the active door open until the inactive door closes, allowing the active door to close. Structural steel components are housed in a durable aluminum channel.

- All units feature adjustable holding power, override feature which prevents damage to doors and frames, and are compatible with Ives flush bolts. Units are available with filler bars, designed to cover the remaining portion of the stop strip
- UL/cUL Listed for use on pairs of fire doors and have passed rigid testing, far exceeding industry standards



COORDINATOR ACCESSORIES: MB1, MB2, MB1F, MB2F AND MB3F SERIES MOUNTING BRACKETS

- Allows stop-mounted hardware to be properly installed without damaging the COR Series coordinator



CBI CARRY BAR

- For installations where it is possible to open the inactive door before the active door
- The carry bar, mounted on the inactive door, prevents damage to the doors and other hardware; nylon roller ensures quiet operation



COR7G/COR9G

- Brass construction; gravity action arm provides effective coordination for door pairs with astragals on either or both doors
- Both versions are UL Listed for use on pairs of labeled fire doors
- The COR7G projects 7" (177.8mm); the COR9G projects 9" (228.6mm)



CRASH STOPS

- Specially designed for full-size exterior doors
- Tear-resistant, gray vinyl cover
- Heavy-duty compression spring assembled to both ends of chain and end brackets
- Available in three lengths: 20-1/2" (for 30" door widths)
25-1/2" (for 36" door widths)
30-1/2" (for 42" door widths)



Ives offers a range of floor- and wall-mounted door stops and holders. A wide variety of styles and functions, available in numerous materials and finishes, solve just about every possible door control problem. All units are manufactured to the highest standards of quality and designed to discourage vandalism, while maintaining an attractive and sleek appearance. Here's a sampling of some of Ives' stops and holders:

- | | | | |
|--|------------------------------------|--|----------------------------------|
| A. FS436 Dome Stop/R435 Riser | Ea. FS18S Security Door Stop | I. FS444, FS448 Floor-Mounted Bumper | L. FS40-Series Automatic Holders |
| B. WS406CVX, WS406CCV, WS407CVX, WS407CCV Wall Bumpers | Eb. FS18L Security Door Stop | J. FS446, FS450 Manual Type Holder | M. FS1153 Plunger Type Holder |
| C. WS443, WS447 Wall Bumper | F. WS445, WS449 Manual Type Holder | K. FS9 Semi-Automatic Floor-Mounted Holder | N. RB470 Roller Bumper |
| D. WS33 Wall Bumper | G. WS40 Wall-Mounted Holder | | O. FS452 Kick Down Holder |
| | H. WS45 Wall-Mounted Holder | | P. FS434 Floor Stop |



Door Trim

STEELCRAFT

SCHLAGE

IVES

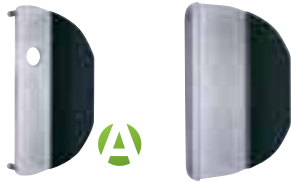
LCN

GLYNN JOHNSON

VON DUPRIN

FALCON

VANDAL-RESISTANT TRIM



VR800/VR900-Series for exterior openings where vandalism and abuse are a concern

- Stainless steel construction
- For use with most mortise locks
- UR900 Series for use with most mortise locks and Von Duprin 98/99 Series devices
- UR800 Series for use with most mortise locks and Monarch 18 Series devices

8100 DOOR PULLS



- Ives packs pulls with standard type fasteners for 1-3/4" thick doors; special mounting methods also available

8103-8 8114-5 8111-5 8105-6 8112-5 8113-5 8102-6 8121-5
 8103-0 8105-8 8102-8
 8103-2 8105-0 8102-0

8103EZ & 8190 DOOR PULLS



- 8103EZ - 2-1/2" clearance for physically impaired
- Pulls are available with pushbars
- Ives packs pulls with standard type fasteners for 1-3/4" thick doors; special mounting methods also available
- Conforms to ANSI A156.6

8103EZ-8
8103EZ-0
8103EZ-2

8190-8
8190-0
8190-2
8190-18

8300 DOOR PULLS



- Pulls and pull plates have uniform finish lines and special mounting methods available
- Optional CFC or CFT; conforms to ANSI A156.6

8302-6 8303-8 8314-5 8305-6 8311-5
 8302-8 8303-0 8305-8
 8302-0 8305-0

8200 PULL-PUSH PLATES

- Optional CFC (cut for cylinder) or CFT (cut for thumbturn)
- All brass, bronze, stainless steel and aluminum push plates conform to ANSI A156.6



Pull plate



= Antimicrobial Coating Available



8400 PROTECTION PLATES

- Protection plates can be made with brass, bronze, stainless steel or aluminum, as well as 1/8" (3mm) thick clear acrylic plastic, black or brown high-impact polyethylene
- All brass, bronze, stainless steel and aluminum conform to ANSI A156.6

HAND RAIL BRACKETS



HB159A
HB159B



HB158



HB162

- For use on commercial applications
- Exceeds OSHA and BHMA strength test requirements



DP1

DP2

DUST PROOF STRIKES

- DP1 and DP2 are designed for use with the bottom bolt of all Ives Flush Bolts.
- Spring-loaded plunger returns to floor or threshold level anytime flush bolt is retracted, eliminating need to clean standard floor strikes
- DP3 and DP4 strikes can be locked in the up position by rotating plunger with screw driver or coin



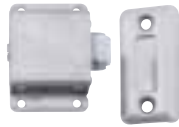
A



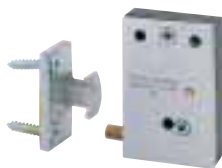
B



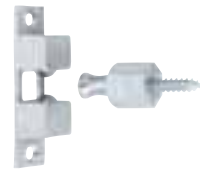
C



D



E



F



G



H

ROLLER LATCHES AND CATCHES

Ives Roller Latches are available in a variety of materials and finishes, providing attractive and dependable solutions for numerous applications.

A. RL30 Roller Latch

Brass or bronze units feature silent rubber roller (nylon or nylon-covered brass rollers optional) and are available with standard 2-1/4" (57.2mm) x 1-11/16" (42.9mm) strike or 4-7/8" (123.8mm) ASA strike (suffix A). Projection of roller is easily adjusted by way of adjusting screws on face of unit.

B. RL32 Roller Latch

Available in brass, bronze, or stainless steel and is designed to fit a heavy-duty cylindrical lock mortise. Units feature silent rubber roller (nylon or nylon covered brass rollers optional) and are available with standard 2-3/4" (69.9mm) x 1-1/8" (28.6mm) strike or 4-7/8" (123.8mm) ASA strike (suffix A). Knurled nut on back of latch provides easy adjustment of roller projection.

C. RL36 Roller Latch

Ideal for lighter duty applications, this model is available in stainless steel. Units feature silent action nylon roller and are furnished with standard 2-3/4" (69.9mm) x 1-1/8" (28.6mm) strike or optional ASA strike (suffix A). Units fit standard cylindrical lock. Adjusting screw on back of unit allows for easy adjustment or roller projection.

D. RL38 Roller Latch

Available in stainless steel, ideal for lighter duty applications where a surface-mounted application is required. Adjusting screw on back of unit provides simple adjustment or roller projection.

E. CL11, CL12 Invisible Latches

CL11 latch ideal for cabinet doors or small panels or light doors. Larger CL12 unit is recommended for use on larger panels or light doors.

F. CL21 Ball Type Latches

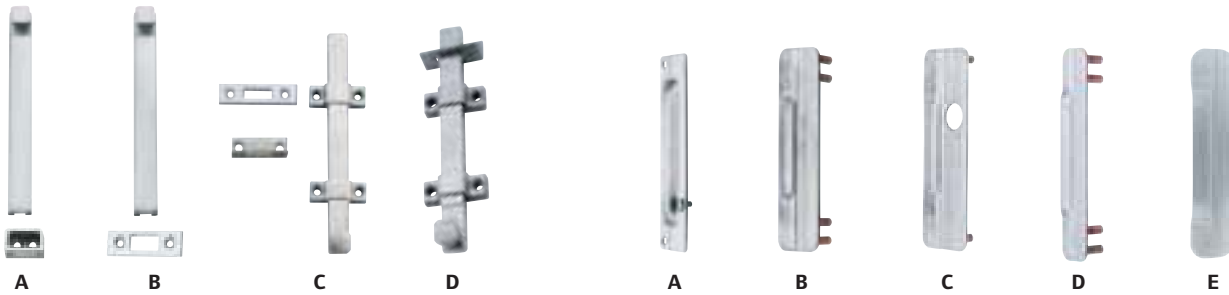
G. CL21A

H. CL22

CL21 and CL21A models are ideal for holding closet doors, access doors or other medium-duty hinged openings. Lighter duty CL22 is recommended for smaller cabinet doors or panels.

Surface Bolts

Surface Bolts/Lock Guards



SURFACE BOLTS

Ives Surface Bolts provide maximum security on virtually any style door. Featuring 1" throw, models are available in top or bottom mount versions.

- A. SB1630B (203.2mm) bolt with bottom strike [SB1630T (203.2mm) unit with top strike (not shown)]
- B. SB1630TL (203.2mm) locking bolt with top strike [SB1630BL (203.2mm) unit with bottom strike (not shown)]
- C. SB453TB (203.2mm) bolt with top and bottom strikes
- D. SB360-T (203.2mm) bolt with universal top strike

LOCK GUARDS

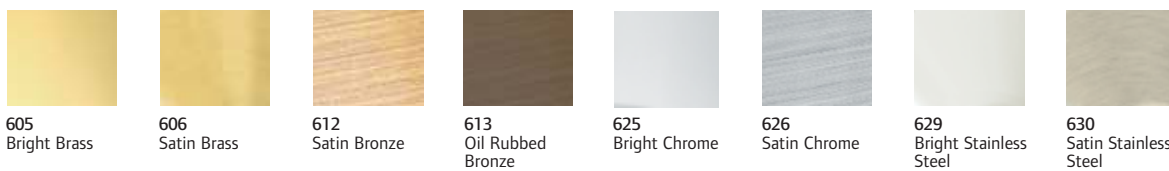
LG Series Lock Protectors are available in numerous styles and finishes. All models are designed to cover the latchbolt area of the door and frame, providing added protection from vandalism or normal abuse. All units feature heavy-gauge construction.

- A. LG1 - ideal for use with mortise or cylindrical locks
- B. LG10 - ideal for use with rose or escutcheon 2-3/4" (69.9mm) wide or less
- C. LG11 - for aluminum doors with latch type locks or doors equipped with electric strikes
- D. LG12 - narrow design for use on rose or escutcheon 3-1/2" (88.9mm) or less (type 86 mortise and 161 cylindrical locks)
- E. LG13 - compact design ideal for use on type 161 cylindrical locks, monolock and UNI lock

Ives Architectural Hardware Finishes

Description	US Number	BHMA
Bright Brass	US3	605
Satin Brass	US4	606
Satin Bronze	US10	612
Dark Satin Bronze – Oxidized and Oil-Rubbed	US10B	613
Bright Chromium	US26	625
Satin Chromium	US26D	626
Bright Stainless Steel	US32	629
Satin Stainless Steel	US32D	630

Additional finishes are available. Consult factory.





Contents

- Closer Overview
- Closer Installation and No Leak™ Closers
- 4000 Series
- Fire/Life Safety Closers/ Holders
- High Security Closers
- Concealed
- 1000 Series
- ADA Compliance and Product Guide
- Automatic Operators and Accessories
- Finishes

The best closer you can buy. Period.

From schools and healthcare facilities, to sports arenas, government buildings and other commercial settings, LCN closers are the toughest, smoothest and most reliable door closers in the business. The LCN product offering includes heavy-duty closers for interior and exterior doors, as well as fire/life safety closers/holders and high-security manual closers. LCN also provides automatic operators for use by those who may need additional assistance.