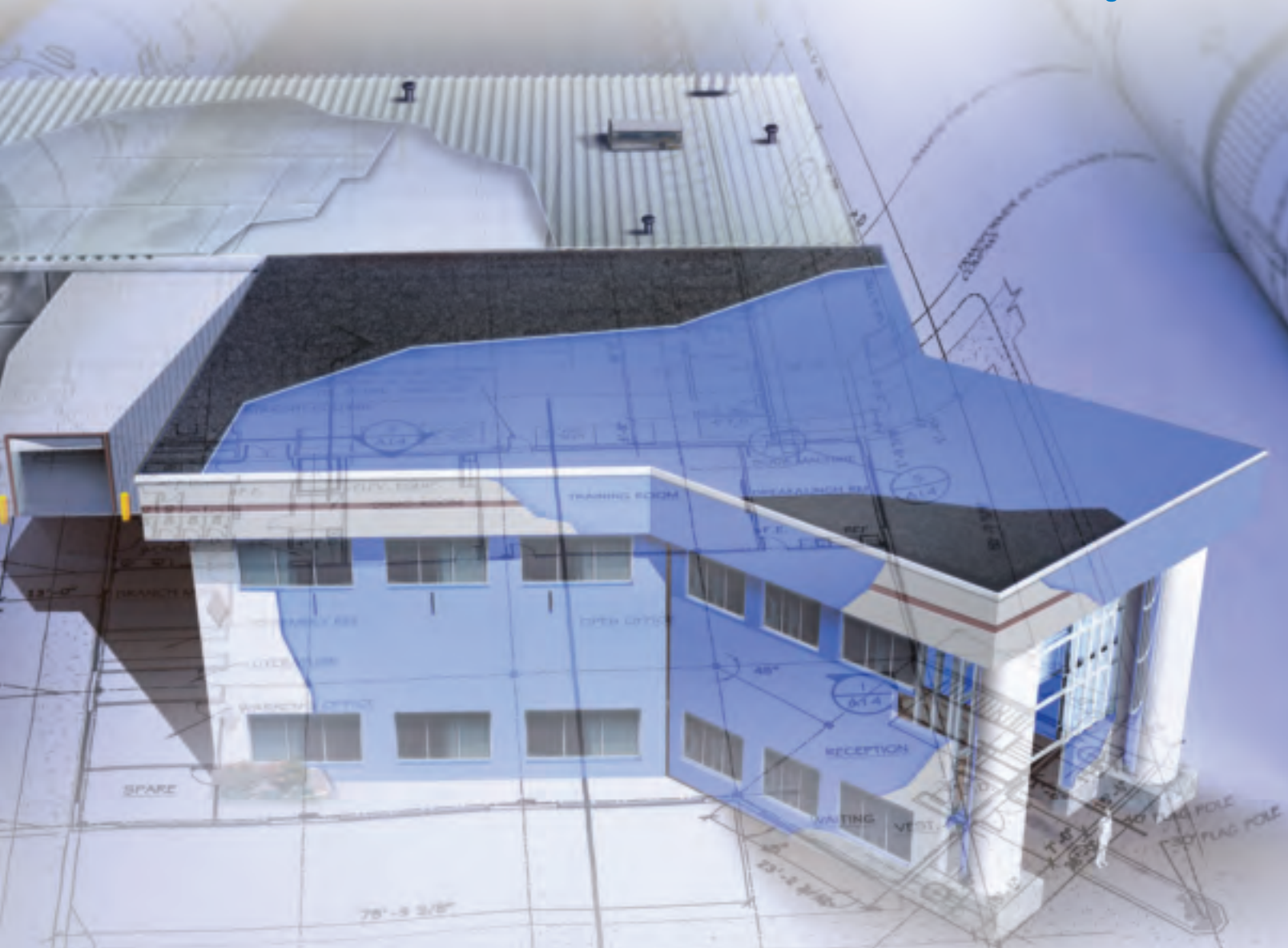


Plan on Dow



Dow Building Solutions



Insulation, Sealant and Adhesive Products

FOR COMMERCIAL WALL, FOUNDATION AND ROOF APPLICATIONS

FIRST FLOOR PLAN

The Right Product for Almost Every Application.



The right products can add years of trouble-free life to your building project. The Dow Chemical Company ("Dow") makes a variety of products for a wide range of commercial, roofing, geotechnical and low-temperature applications. Dow's product portfolio includes:

- STYROFOAM™ extruded polystyrene insulation
- STYROFOAM™ Spray Polyurethane Foam (SPF) Insulation (2.0 pcf and 3.0 pcf) and the DOW™ SPF Roof System
- INSTA STIK™ Quik Set Commercial Roofing Adhesive
- TILE BOND™ Roof Tile Adhesive
- FROTH-PAK™ FS Portable Spray Foam Kit
- FROTH-PAK™ Sealant Foam Kit
- GREAT STUFF PRO™ Gaps & Cracks Insulating Foam Sealant
- GREAT STUFF PRO™ Window & Door Insulating Foam Sealant
- WEATHERMATE™ Straight Flashing

This brochure will help you identify which products are right for your job. Then simply visit www.dowstyrofoam.ca/4architects or call the appropriate toll-free number for product availability or technical literature.

Don't compromise quality and performance. Choose insulation, sealant and adhesive products from Dow.

For Technical Information:

1-866-583-BLUE (2583)

For Sales and Order Information:

1-800-232-2436

www.dowstyrofoam.ca/4architects

Proven Performance ... Again and Again.

STYROFOAM™ extruded polystyrene insulation is made to offer reliable performance over the long term. Its distinct closed-cell structure leaves no voids between the cells. The result: high compressive strength and unparalleled resistance to water penetration.

Because it stands up over time, you can reuse STYROFOAM extruded polystyrene insulation in many applications, adding exceptional value to your project by saving both future replacement and disposal costs.

Dow polyurethane products offer dependable service in a wide variety of commercial applications. The one- and two-component systems are specially formulated for long service. And they are compatible with most construction materials.

Environmentally Friendly.

As a leader in defining and implementing solutions to global environmental concerns, Dow has phased out CFCs in the manufacture of STYROFOAM™ extruded polystyrene insulation. It is now manufactured with HCFC blowing agents, which have 94 percent less ozone depletion potential than standard blowing agents.

STYROFOAM extruded polystyrene insulation can also be reused, greatly reducing the amount of precious landfill space that would otherwise be needed for disposal.



Dow Building Solutions

Interior or Exterior Applications

STYROFOAM™ extruded polystyrene insulation products stand up to the demands of foundation wall and drainage applications:

- Excellent water resistance
- Long-term thermal performance
- High compressive strength resists crushing by backfill

Insulation/Drainage

PRODUCTS:

- STYROFOAM™ SM Insulation
- STYROFOAM™ PERIMATE™ Insulating Drainage Panels

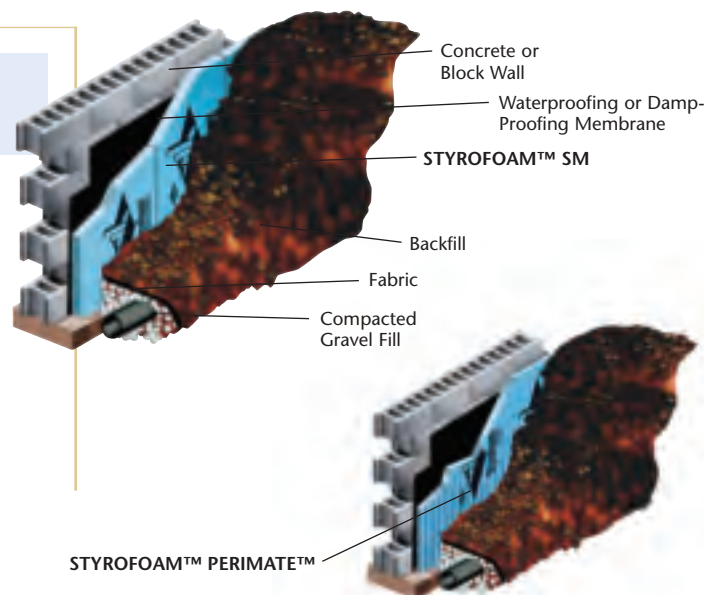
APPLICATION:

Install STYROFOAM SM extruded polystyrene insulation against the exterior foundation wall to help provide long-term thermal performance.

Meets CAN/ULC S701 Type 4

STYROFOAM PERIMATE extruded polystyrene insulating drainage panels provide waterproofing, thermal insulation and drainage of the subsurface soil moisture in a single step. They are suitable for use in pervious, semi-pervious and practically impervious soils.

Meets CAN/ULC S701 Type 4 and CCMC Class A Type 2 drainage requirements



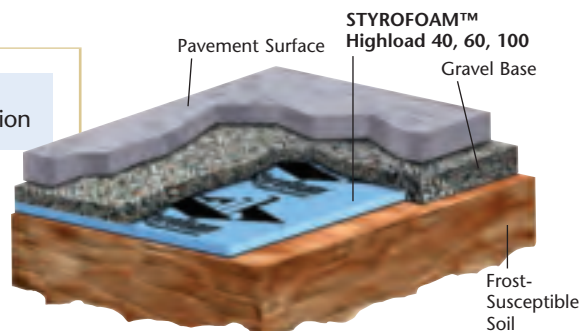
Geotechnical

PRODUCTS:

- STYROFOAM™ Highload 40, Highload 60, Highload 100 Insulation

APPLICATION:

Use wherever you need excellent load-bearing and insulating capabilities, including under building floor slabs; highways; airport runways, taxiways and aprons; railroads; culverts; retaining walls; storage tank slabs; and swimming pools. Lay STYROFOAM extruded polystyrene insulation products on top of leveled soil. Top with a gravel base and pavement or other surface. For low-temperature floors such as ice rinks, position insulation under the wearing slab.



STYROFOAM Highload insulation products have been developed specifically for in-ground applications.

Roofs.

One- and Two-Component Polyurethane Foam Products for Roofs

Polyurethane foam insulation, sealant and adhesive products from Dow deliver the high quality and reliability professionals require in a wide range of commercial roofing applications, including:

- Flat and low slope roofs
- Steep slope roofs
- Barrel and dome roofs
- Roof recovery projects
- New and reroof projects

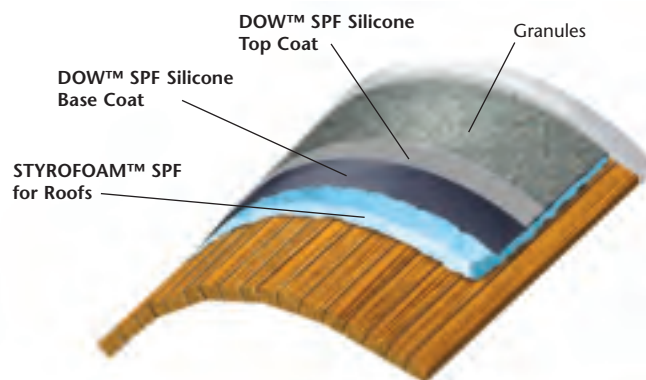
Roof System

PRODUCTS:

- DOW™ Spray Polyurethane Foam (SPF) Roof System
 - STYROFOAM™ Spray Polyurethane Foam (SPF) Insulation for Roofs
 - DOW™ SPF Silicone Coating (two-coat system with granules)
 - DOW™ SPF Acrylic Coating (three-coat system)

APPLICATION:

Apply STYROFOAM Spray Polyurethane Foam (SPF) Insulation for Roofs directly on roof deck or over approved substrate or underlayment. Top with a DOW silicone or acrylic coating for a full system, which may qualify for a 15-year warranty when applied by a Dow-approved applicator.



NOTE: STYROFOAM™ SPF Insulation contains isocyanate, hydrofluorocarbon blowing agent and polyol. Read the Material Safety Data Sheet carefully before use. Wear protective clothing, gloves, goggles and proper respiratory protection. Supplied air or an approved air-purifying respirator equipped with an organic vapour sorbent and a particle filter is required to maintain exposure levels below ACGIH, OSHA, WEEL or other applicable exposure limits. Provide adequate ventilation.

NOTE: Read the Material Safety Data Sheet carefully before using DOW™ SPF Silicone and Acrylic Coatings.

NOTE: Dow polyurethane foam sealants and adhesives contain isocyanates, hydrofluorocarbon or hydrocarbon blowing agents and prepolymers. Read the Material Safety Data Sheet carefully before use. Wear protective clothing, gloves and goggles and provide adequate ventilation and/or wear respiratory protection.

Sealant

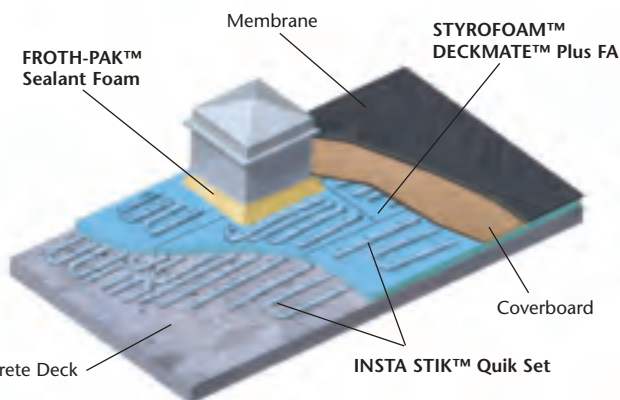
PRODUCTS:

- FROTH-PAK™ Sealant Foam Kit
- GREAT STUFF PRO™ Gaps & Cracks Insulating Foam Sealant

APPLICATION:

Use the FROTH-PAK Sealant Foam Kit (1.75 pcf density) to fill gaps or joints larger than 2" (50 mm). When properly applied, the spray forms an effective air sealant or insulation on most roofing materials. FROTH-PAK Sealant Foam Kit is also useful in sealing the ends of standing seam metal roofs.

GREAT STUFF PRO Gaps & Cracks is ideal for sealing smaller areas, such as the joints between walls and ceilings and small gaps around pipe penetrations.



Adhesive

PRODUCTS:

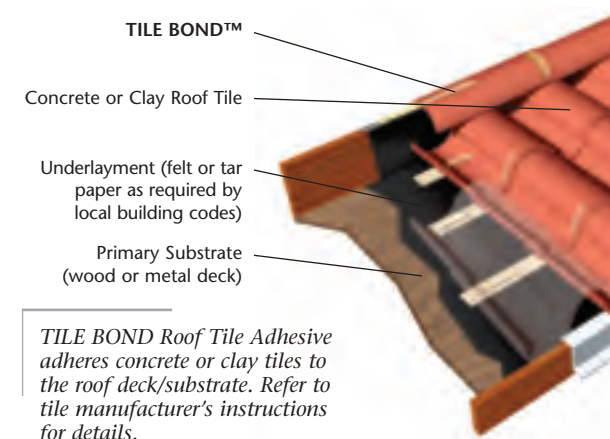
- INSTA STIK™ Quik Set Commercial Roofing Adhesive
- TILE BOND™ Roof Tile Adhesive

APPLICATION:

When properly applied, polyurethane adhesive products from Dow provide a fast, efficient method for securing foam insulation boards or roof tiles to appropriate roof deck or substrate.

INSTA STIK Quik Set has a limited 10-year adhesion warranty when applied to compatible materials or substrates by an approved applicator. Limited 15- and 20-year adhesion warranties are available at additional cost.

TILE BOND must be applied by an approved applicator to meet certain building code requirements. Consult local code authorities. Refer to product packaging for applicable warranty and limitations.



TILE BOND Roof Tile Adhesive adheres concrete or clay tiles to the roof deck/substrate. Refer to tile manufacturer's instructions for details.

For more detailed installation information, contact your Dow representative or refer to the product literature.

Protected Membrane Roofing (PMR)

STYROFOAM™ extruded polystyrene insulation offers exceptional performance in roofing and plaza applications:

- Excellent moisture resistance and stable long-term R-value
- Excellent physical properties
- Extends life of plaza or roof; for use with waterproofing roof terraces, promenades and similar applications
- Protects membrane against weathering, physical abuse and damage
- Maintains membrane at a relatively constant temperature, minimizing effects of freeze-thaw cycling and temperature extremes
- Reduces repair expenditures
- Reusable under most conditions
- Excellent moisture control – membrane serves as the vapour retarder

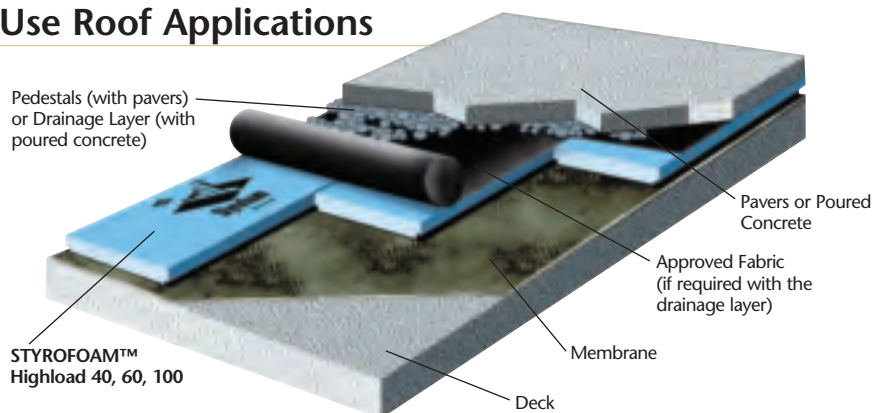
Plaza Construction/Extended-Use Roof Applications

PRODUCTS:

- STYROFOAM™ Highload 40, Highload 60 or Highload 100 Insulation

APPLICATION:

Install directly on top of the waterproofing membrane. Follow with a layer of fabric and gravel or pedestals for leveling and drainage. Top with pavers, poured concrete or green roof finishes. Use when pedestrian or vehicular traffic is anticipated.



Roof Construction

PRODUCT:

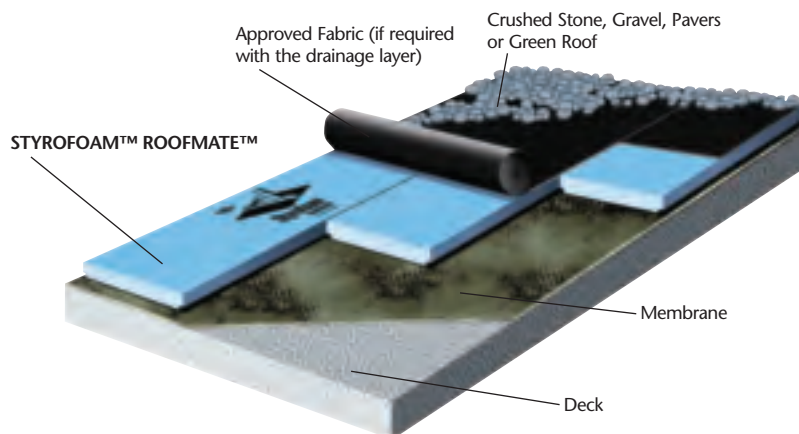
- STYROFOAM™ ROOFMATE™ Insulation

APPLICATION:

Install on top of the membrane. Follow with approved fabric and a layer of crushed stone, gravel, pavers or green roof.

- Year-round construction – roof is waterproofed first, then insulated
- Nearly 40 years' proven performance
- Full system warranties may be available from membrane manufacturers

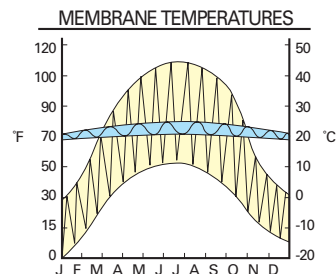
Meets CAN/ULC S701 Type 4



MEMBRANE FIELD TEMPERATURE TEST

Membrane protection (PMR vs. conventional): Field studies have shown that a constant temperature can extend the life of the membrane. STYROFOAM ROOFMATE extruded polystyrene insulation offers excellent temperature control.

- PMR roof (blue line) – the membrane temperature remains relatively constant
- Conventional roof (yellow line) – membrane temperature fluctuates widely



Conventionally Insulated Roof Construction – Mechanically Attached, Ballasted and Fully Adhered

In conventional roofing applications, STYROFOAM™ extruded polystyrene insulation products offer:

- High moisture resistance and long-term R-value
- Ease of use – simple to cut, install and store
- High compressive strength for excellent durability and resistance to damage
- Reusability when membrane must be replaced
- Planed surface for excellent bonding of adhesives (STYROFOAM™ DECKMATE™ Plus FA)

Check with your local Dow sales representative for local code requirements.

Loose-Laid Ballasted System

PRODUCTS:

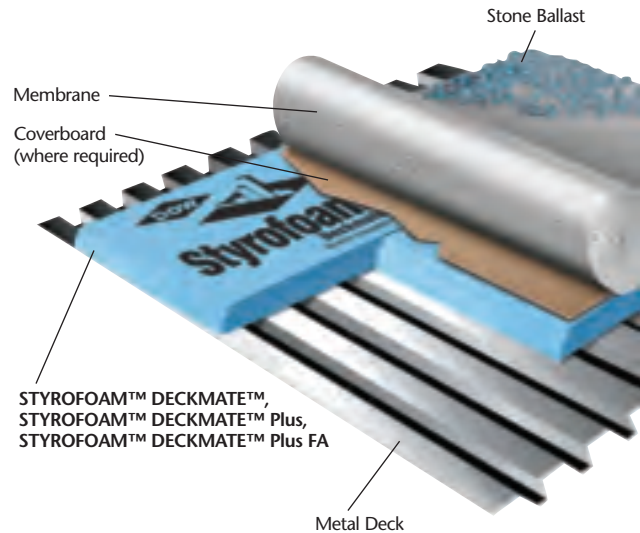
- STYROFOAM™ DECKMATE™ Insulation
- STYROFOAM™ DECKMATE™ Plus Insulation
- STYROFOAM™ DECKMATE™ Plus FA Insulation

APPLICATION:

Install insulation directly on structural deck, including metal decking. Any application-appropriate roofing membrane may be used with STYROFOAM extruded polystyrene insulation. However, in some cases a coverboard may be required between the insulation and the membrane for heat or chemical protection. Dark-coloured adhered or mechanically fastened membranes require a coverboard. Consult Dow and/or your local building code for installation requirements.

STYROFOAM DECKMATE Plus extruded polystyrene insulation has a compressive strength of 20 psi for applications where greater membrane support is desired.

Meets CAN/ULC S701 Types 2 and 3



Tapered Insulation System

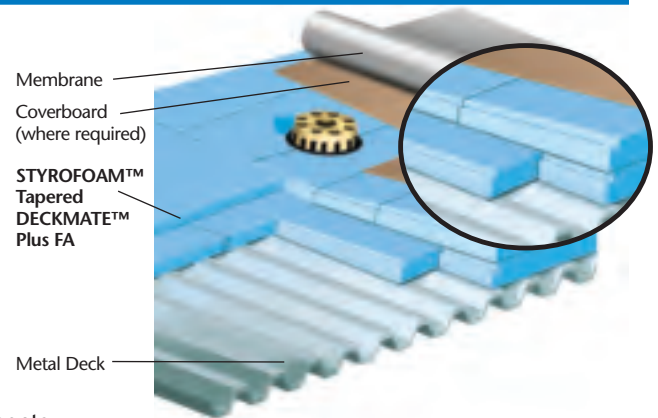
PRODUCT:

- STYROFOAM™ Tapered DECKMATE™ Plus FA Insulation

APPLICATION:

Install on flat roof decks to increase roof slope. Any roofing membrane may be used with STYROFOAM Tapered DECKMATE Plus FA insulation. However, in some cases a coverboard may be required between the insulation and the membrane for heat or chemical protection. Dark-coloured adhered or mechanically fastened membranes require a coverboard.

- Tapered design provides a positive slope to improve roof drainage
- Consult Dow and/or your local building code for installation requirements



Roof Recovery Applications

A fanfolded STYROFOAM™ extruded polystyrene insulation product is designed especially for roof recovery applications:

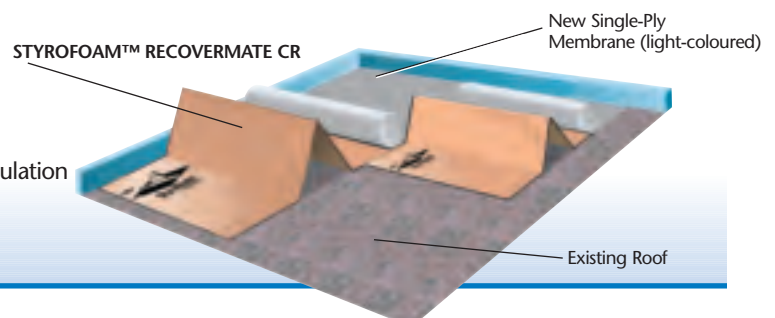
- Resistant to the effects of moisture
- Excellent compressive retention
- Lightweight: easy to cut, handle, install and store
- Withstands temperatures to 165°F (74°C)

PRODUCT:

- STYROFOAM™ RECOVERMATE CR Insulation

APPLICATION:

Install STYROFOAM RECOVERMATE CR extruded polystyrene insulation over entire surface of old roof, on top of existing membrane. Top with ballasted or mechanically attached sheet membrane.



One- and Two-Component Polyurethane Foam Products for Walls

Help to increase energy efficiency and building quality with polyurethane products from Dow. Dow's energy and moisture management products deliver high thermal resistance and help to protect against air infiltration and water vapour.

Insulation

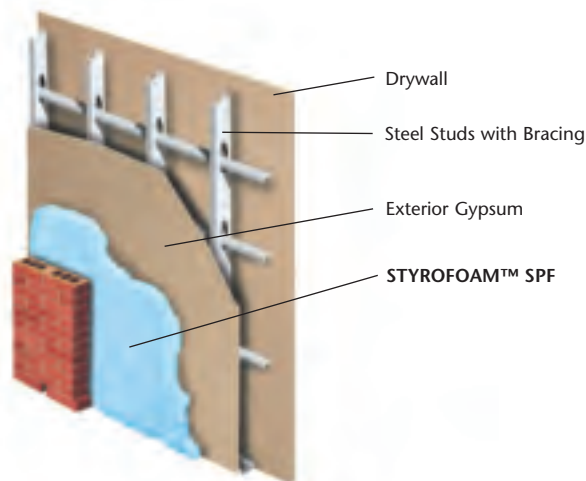
PRODUCT:

- STYROFOAM™ Spray Polyurethane Foam (SPF) Insulation (2.0 pcf)

APPLICATION:

Insulate the exterior wall cavity with STYROFOAM SPF Insulation.

NOTE: STYROFOAM™ SPF Insulation contains isocyanate, hydrofluorocarbon blowing agent and polyol. Read the Material Safety Data Sheet carefully before use. Wear protective clothing, gloves, goggles and proper respiratory protection. Supplied air or an approved air-purifying respirator equipped with an organic vapour sorbent and a particle filter is required to maintain exposure levels below ACGIH, OSHA, WEEL or other applicable exposure limits. Provide adequate ventilation.



Sealant

PRODUCTS:

- FROTH-PAK™ Sealant Foam Kit
- GREAT STUFF PRO™ Gaps & Cracks Insulating Foam Sealant
- GREAT STUFF PRO™ Window & Door Insulating Foam Sealant

APPLICATION:

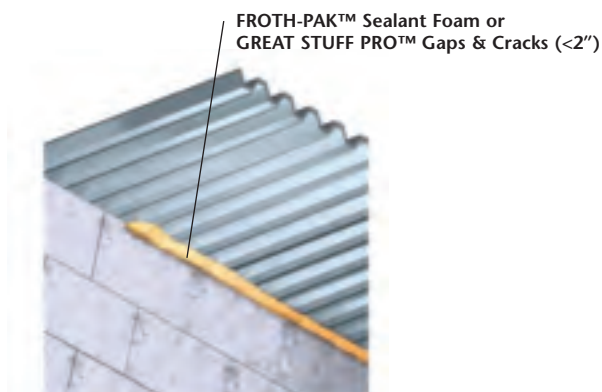
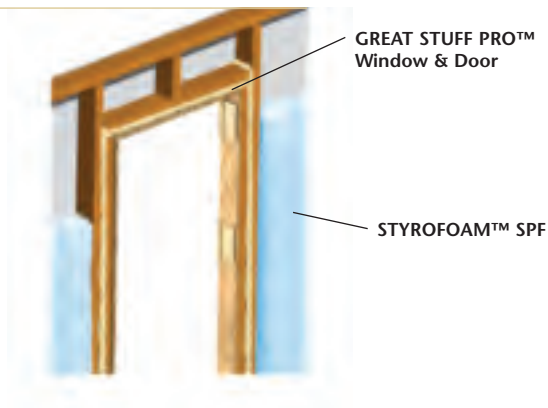
Insulate the wall cavity with STYROFOAM SPF Insulation.

FROTH-PAK Sealant Foam Kit is ideal for sealing larger areas, over 2" (50 mm), such as wall/roof junctures or large penetrations.

GREAT STUFF PRO Gaps & Cracks Insulating Foam Sealant is ideal for sealing smaller areas, such as the joints between walls and ceilings and small gaps around pipe penetrations.

GREAT STUFF PRO Window & Door Insulating Foam Sealant fills gaps around window and door frames without causing distortion.

NOTE: Dow polyurethane foam sealants and adhesives contain isocyanates, hydrofluorocarbon or hydrocarbon blowing agents and prepolymers. Read the Material Safety Data Sheet carefully before use. Wear protective clothing, gloves and goggles and provide adequate ventilation and/or wear respiratory protection.



Exterior Applications

On the exterior of the structural wall, STYROFOAM™ extruded polystyrene insulation contributes to improved energy efficiency. Because it is moisture-resistant, STYROFOAM extruded polystyrene insulation delivers long-lasting thermal performance in the harsh, wet cavity wall environment. Sized to fit snugly between wall ties, STYROFOAM™ CAVITYMATE™ extruded polystyrene insulation products save time and money on the job site.

Cavity Wall

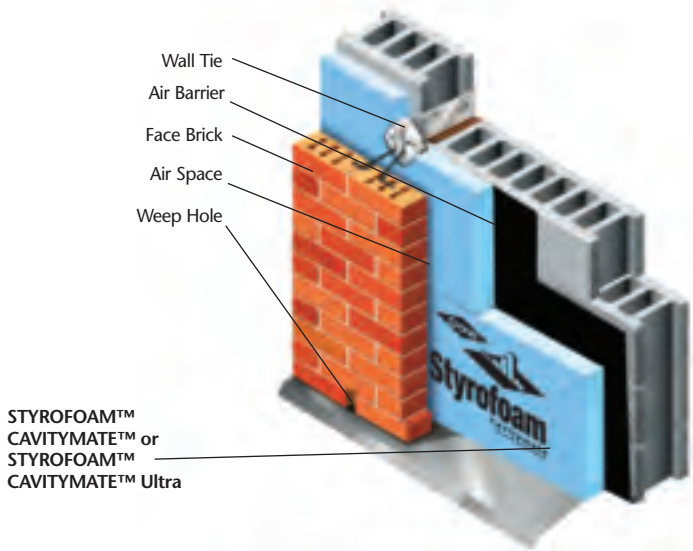
PRODUCTS:

- STYROFOAM™ CAVITYMATE™ Insulation
- STYROFOAM™ CAVITYMATE™ Ultra Insulation

APPLICATION:

Installed directly between the wall ties, STYROFOAM CAVITYMATE insulation eliminates the need to cut or snap the correct dimension.

	STYROFOAM CAVITYMATE	STYROFOAM CAVITYMATE Ultra
Board Size	400 mm x 2400 mm 600 mm x 2400 mm	400 mm x 2400 mm 600 mm x 2400 mm
R-Value (per inch)	R=5.0	R=5.6
CAN/ULC S701	Type 3	Type 3
Compressive Strength	25 psi	25 psi



Cavity Wall – Steel Stud

PRODUCTS:

- STYROFOAM™ CAVITYMATE™ SC Insulation
- STYROFOAM™ Spray Polyurethane Foam (SPF) Insulation (2.0 pcf)
- WEATHERMATE™ Straight Flashing

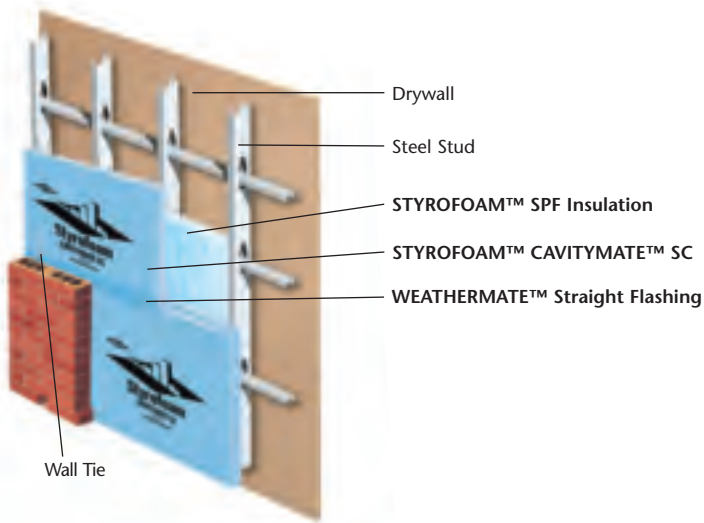
APPLICATION:

Install rigid foam insulation as an exterior cladding on steel stud walls in new commercial and residential high-rise buildings.

Available in 2' x 8' and 4' x 8' boards.
Meets CAN/ULC S701 Type 2

For a tear-resistant seal that resists water intrusion, Dow recommends taping seams between insulation boards with WEATHERMATE Straight Flashing.

Insulate the cavity with STYROFOAM SPF Insulation.



Exterior Precast Panel Applications

Used in insulated precast and prestressed panel construction, STYROFOAM™ extruded polystyrene insulation combines insulating capabilities and condensation control with the added strength of concrete.

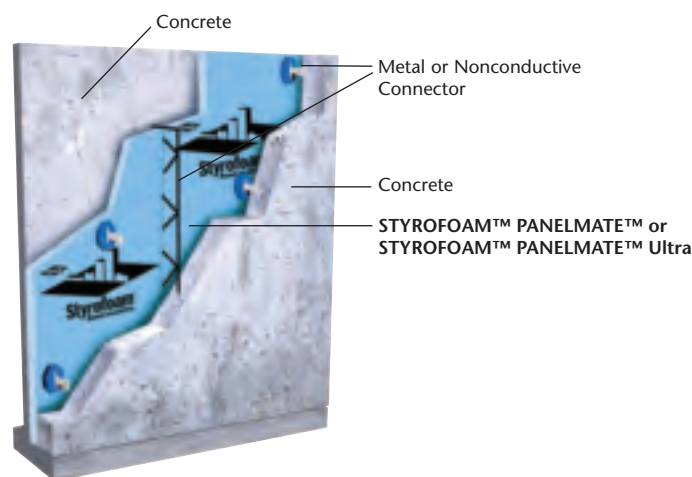
PRODUCTS:

- STYROFOAM™ PANELMATE™ Insulation
- STYROFOAM™ PANELMATE™ Ultra Insulation

APPLICATION:

Concrete is poured on both sides of the foam and the composite panel is held together structurally with connectors.

Meets CAN/ULC S701 Types 2 and 3



Interior Applications

With STYROFOAM™ extruded polystyrene insulation and Dow polyurethane foam products, your building performs more efficiently over time. STYROFOAM extruded polystyrene insulation and Dow polyurethane foams provide:

- Excellent long-term thermal performance
- Ease of use
- Unparalleled moisture resistance
- Reusability (STYROFOAM insulation)

Interior Wall Insulation

PRODUCTS:

- STYROFOAM™ SM Insulation
- GREAT STUFF PRO™ Gaps & Cracks Insulating Foam Sealant

APPLICATION:

STYROFOAM SM extruded polystyrene insulation is precut to 24" x 96" boards that can be installed between furring channels placed on 24" centers.

Meets CAN/ULC S701 Type 2

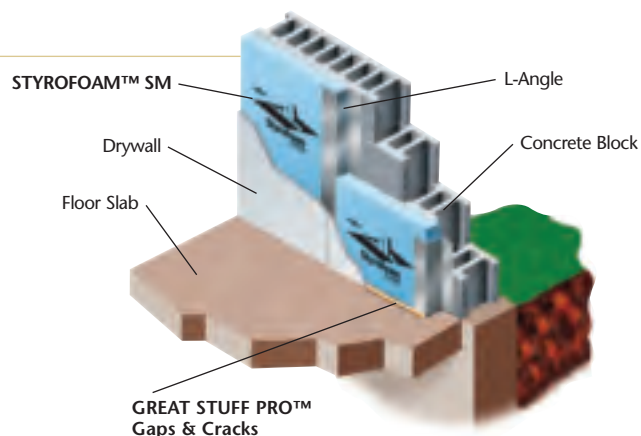
Apply GREAT STUFF PRO Gaps & Cracks Insulating Foam Sealant at wall/floor joint.



T-Strip



L-Angle



STYROFOAM™ Extruded Polystyrene Insulation

Physical Properties	Property (Units)	Thermal Resistance ¹ min. R-Value per inch @ 75°F mean temp (RSI per 25mm @ 24°C mean temp)	Compressive Strength lb/in ² (kPa) min. ⁽²⁾	Flexural Strength, lb/in. ² (kPa) min.	Water Absorption (% by volume) max.	Water Vapour Permeance ³ , max. perm (ng/Pa·cm)	Coefficient of Linear Thermal Expansion, 10 ⁻⁶ in/in • °F (10 ⁻⁶ mm/m·°C)	Complies with CANULC S701, Type	Maximum Use Temperature, °F (°C)	Treatment	Width (inches unless otherwise indicated)	Length (inches unless otherwise indicated)	Typical Thickness (inches unless otherwise indicated)
ASTM Method	C518, C177	D1621	C203	D2842	E96	D696							
CAVITYMATE™	5.0 (0.87)	25 (170)	43 (300)	<0.7	1.5 (90)	3.5 (6.3)	3	165 (74)	BE SL	400mm 600mm	2400mm 2400mm	40mm-75mm 50mm-75mm	
CAVITYMATE™ SC	5.0 (0.87)	16 (110)	35 (240)	0.9	1.5 (90)	3.5 (6.3)	2	165 (74)	SL SL	24 48	96 96	1-2 1-2	
CAVITYMATE™ Ultra	5.6 (0.97)	25 (170)	43 (300)	0.7	1.5 (90)	3.5 (6.3)	3	165 (74)	BE SL	400mm 600mm	2400mm 2400mm	40mm-91mm 55mm-75mm	
DECKMATE™	5.0 (0.87)	16 (110)	35 (240)	0.9	1.5 (90)	3.5 (6.3)	2	165 (74)	SL	24	96	1-4	
DECKMATE™ Plus	5.0 (0.87)	20 (140)	43 (300)	0.7	1.5 (90)	3.5 (6.3)	3	165 (74)	SL	24	96	4	
DECKMATE™ Plus FA (flat and tapered)	5.0 (0.87)	25 (170)	43 (300)	0.9	1.5 (90)	3.5 (6.3)	3	165 (74)	SL	24	96	1-4	
Highload 40	5.0 (0.87)	40 (275)	70 (480)	0.7	0.6 (35)	3.5 (6.3)	4	165 (74)	BE	24	96	1-3	
Highload 60	5.0 (0.87)	60 (415)	85 (585)	0.7	0.6 (35)	3.5 (6.3)	4	165 (74)	BE	24	96	1-3	
Highload 100	5.0 (0.87)	100 (690)	85 (585)	0.7	0.6 (35)	3.5 (6.3)	4	165 (74)	BE	24	96	2-3	
PANELMATE™	5.0 (0.87)	16 (110)	35 (240)	0.9	1.5 (90)	3.5 (6.3)	2	165 (74)	BE	24	96	custom sizes	
PANELMATE™ Ultra	5.6 (0.97)	25 (170)	43 (300)	0.7	1.5 (90)	3.5 (6.3)	3	165 (74)	BE	24	96	custom sizes	
PERIMATE™	5.0 (0.87)	30 (210)	50 (350)	0.7	0.9 (50)	3.5 (6.3)	4	165 (74)	SL	24	96	2 1/8	
RECOVERMATE CR	1.5 ⁽⁴⁾ (0.26)	15 (105)	–	0.8	–	3.5 (6.3)	–	165 (74)	BE	48	600	3/8	
ROOFMATE™	5.0 (0.87)	35 (240)	60 (415)	0.7	0.8 (45)	3.5 (6.3)	4	165 (74)	BE SL	24 24	48 48	1 1.5-4	
STYROFOAM™ SM	5.0 (0.87)	30 (210)	50 (350)	<0.7	0.9 (50)	3.5 (6.3)	4	165 (74)	BE	24	96	1-4	
									BE	400mm	2400mm	90mm	
									BE	600mm	2400mm	50mm, 75mm	
									SL	600mm	2400mm	50mm, 75mm	
									SL	24	96	1-4	

(1) R means resistance to heat flow. R-values are expressed in ft²•h•°F/Btu. RSI values are expressed in m²•°C/W.

(2) Vertical compressive strength is measured at 10% deformation (5% for STYROFOAM Highload 40, 60 and 100 insulation products) or at yield, whichever occurs first. Since STYROFOAM extruded polystyrene insulations are visco-elastic materials, adequate design safety factors should be used to prevent long-term creep and fatigue deformations.

(3) Water vapour permeance varies with product type and thickness. Values are based on the desiccant method, and they apply to insulation 1" in thickness. Thicker products have lower permeance.

(4) For 3/8" (10 mm) thickness

Not all products or sizes are available in all parts of the country. Other product sizes are available on a made-to-order basis. Please contact your Dow sales representative for information.

WEATHERMATE™ Straight Flashing

Property	Value
Water Vapour Transmission, ASTM E96, perm	<1
Application Temperature, min.	30°F (-1°C)
UV Resistance, days	120
Size	4" x 100' (100 mm x 30.5 m) 6" x 100' (150 mm x 30.5 m)

How Can We Help You?

Products from Dow Building Solutions offer exceptional performance. Highly skilled professionals are on hand to provide technical assistance from the planning stage through completion.

For product availability or the name of your local sales representative, call 1-800-232-2436 (English) or 1-800-565-1255 (French). For additional information, an architectural binder and technical data sheets, case studies or literature on any of the insulation products and systems listed in this brochure, call 1-866-583-BLUE (2583) or visit www.dowstyrofoam.ca/4architects.

Dow Polyurethane Foam Insulations

07 21 00/DOY
BuyLine 4404

Physical Properties	Property (units)	Flexural Strength, lb/in ² (kPa), parallel	Thermal Resistance min. R-Value per inch @ 72°F mean temp [RSI] per 25mm @ 22°C mean temp]	Compressive Strength, lb/in ² (kPa), parallel	Tensile Strength, lb/in ² (kPa), parallel	Shear Strength, lb/in ² (kPa), parallel	Apparent Core Density, lb/ft ³ (kg/m ³)	Water Absorption, % by volume	Water Vapor Permeance, perm (ng/Pa·s·m ⁻¹)	Cure Time	Application Temperature, °F (°C)	Sizes
ASTM Method		C203	C518	D1621	D1623	C273	D1622	D2842	E96			
FROTH-PAK™ (25 FS)		19.7 (135.8)	4.6 ⁽¹⁾ (0.81)	31.8 (219.2)	12.5 (86.2)	1774 (122.3)	2.0 (28)	18.6	4.5 (6.57)	Tack-free ⁽²⁾ <1 min.	60-90 (15-38)	Selection of kit sizes and refill systems available
STYROFOAM™ SPF for Roofs (3.0 pcf) ^(3, 4)		NA	6.0 ⁽¹⁾ (1.06)	52.3 (360.6)	84.4 (582)	NA	2.9 (46.5)	NA	NA (4.38)	NA	NA	55 gal drums (one ISO, one polyol)
STYROFOAM™ SPF (2.0 pcf)	2035	NA	6.5 ⁽¹⁾ (1.14)	26.0 (179.27)	55.0 (379.22)	NA	>2 (>32)	3.2	1.1	NA	NA	55 gal drums (one ISO, one polyol)
	2050	NA	6.5 ⁽¹⁾ (1.14)	26.4 (182)	53.3 (367.5)	NA	>2 (>32)	3.2	1.4	NA	NA	

(1) Initial value

(2) Actual cure time will depend on temperature.

(3) The complete DOW™ SPF Roof System includes applying a DOW silicone or acrylic coating to STYROFOAM SPF Insulation applied to the roof deck.

(4) Consult your Dow representative regarding formulations with lower or higher viscosities to meet application requirements.

DOW™ SPF Roof Coatings

Property and Test Method ⁽¹⁾	Value
DOW™ SPF Silicone Roof Coating:	
Solids Content, ASTM D2697, % by volume	62
Permeability, ASTM E96, perms	3.7
Elongation, ASTM D412, %	150
Tensile Strength, ASTM D412, psi (kg•mm ²)	400 (0.28)
Volatile Organic Content, ASTM D3960/EPA Method 24, grams per liter	220
Weathering, degradation observed	
Carbon arc, ASTM D822, 10,000 hours	None
QUV, ASTM G53, 10,000 hours	None
DOW™ SPF Acrylic Roof Coating:	
Solids Content, ASTM D2697, % by volume	55
Permeance, ASTM E96, perms @ 20 mils	3.0
Elongation at Break, ASTM D412 @ 75°F, %	280
Elongation at Break, ASTM D412 @ 0°F, %	320
Ultimate Tensile Strength, ASTM D412 @ 75°F, psi	320
Ultimate Tensile Strength, ASTM D412 @ 0°F, psi	250
Accelerated Weathering, ASTM D4798, 3,000 hours	No cracking or checking
Reflectivity Rating, ASTM C1549	0.85
Emissivity Rating, ASTM E1371	0.89

(1) For additional technical data on DOW SPF silicone and acrylic coatings, please call 1-866-583-BLUE (2583) or visit www.dowstyrofoam.ca/4architects.

Dow Polyurethane Foam Sealants and Adhesives

Product	Cure Time	Size	Yield
FROTH-PAK™ Sealant Foam Kit ^(1, 2)	Tack-free <1 min.	Selection of kit sizes and refill systems available	Kits: 1-50 ft ³ Refill systems: 160-3,600 ft ³
GREAT STUFF PRO™ Gaps & Cracks ⁽³⁾	Tack-free 6-7 mins, trim in 30; full cure 1 hour	23 oz can	1,000 linear feet @ 3/8" bead
GREAT STUFF PRO™ Window & Door ⁽³⁾	Tack-free 6-9 mins, trim 1 hour; full cure 12 hours	20 oz can	Will foam up to six windows 36" x 60", 3/8" wide gap, 1" deep.
INSTA STIK™ Quik Set	Tack-free 3-7 mins, depending on humidity	30 lb canister only	8 squares/tank
TILE BOND™	Tack-free 5-15 mins	30 lb complete 30 lb canister only 20 oz can	NA

(1) FROTH-PAK products are available in a selection of densities, formulations and sizes to meet a wide range of project specifications.

(2) Actual cure time will depend on temperature.

(3) Actual cure time will depend on temperature, relative humidity and size of foam bead.



Illustrations are not intended to replace the need for design by appropriate professionals such as architects or engineers.

Dow has manufactured STYROFOAM™ extruded polystyrene insulation for use in construction and specialty applications for nearly 60 years. Its dense closed-cell structure gives STYROFOAM extruded polystyrene insulation excellent moisture resistance, long-term thermal performance and compressive strength. STYROFOAM extruded polystyrene insulation is CFC-free and reusable.

NOTICE: No freedom from any patent owned by Dow or others is to be inferred. Because use conditions and applicable laws may differ from one location to another and may change with time, Customer is responsible for determining whether products and the information in this document are appropriate for Customer's use and for ensuring that Customer's workplace and disposal practices are in compliance with applicable laws and other government enactments. Dow assumes no obligation or liability for the information in this document. NO WARRANTIES ARE GIVEN; ALL IMPLIED WARRANTIES OF MERCHANTABILITY OR FITNESS FOR A PARTICULAR PURPOSE ARE EXPRESSLY EXCLUDED.

COMBUSTIBLE: Protect from high heat sources. Local building codes may require a protective or thermal barrier. For more information, consult MSDS, call Dow at 1-866-583-BLUE (2583) or contact your local building inspector. In an emergency, call 1-519-339-3711.

NOTE: STYROFOAM™ SPF Insulation contains isocyanate, hydrofluorocarbon blowing agent and polyol. Read the Material Safety Data Sheet carefully before use. Wear protective clothing, gloves, goggles and proper respiratory protection. Supplied air or an approved air-purifying respirator equipped with an organic vapour sorbent and a particle filter is required to maintain exposure levels below ACGIH, OSHA, WEEL or other applicable exposure limits. Provide adequate ventilation.

NOTE: Read the Material Safety Data Sheet carefully before using DOW™ SPF Silicone and Acrylic Coatings.

NOTE: Dow polyurethane foam sealants and adhesives contain isocyanates, hydrofluorocarbon or hydrocarbon blowing agents and prepolymers. Read the Material Safety Data Sheet carefully before use. Wear protective clothing, gloves and goggles and provide adequate ventilation and/or wear respiratory protection.

Building and/or construction practices unrelated to building materials could greatly affect moisture and the potential for mould formation. No material supplier, including Dow, can give assurance that mould will not develop in any specific system.

DOW CHEMICAL CANADA INC.

Dow Building Solutions • Suite 2100 • 450 – 1st St. SW • Calgary, AB T2P 5H1 • www.dowstyrofoam.ca/4architects

FOR TECHNICAL INFORMATION: 1-866-583-BLUE (2583) (English); 1-800-363-6210 (French)

FOR SALES INFORMATION: 1-800-232-2436 (English); 1-800-565-1255 (French)

a proud partner of



®™Trademark of The Dow Chemical Company
("Dow") or an affiliated company of Dow