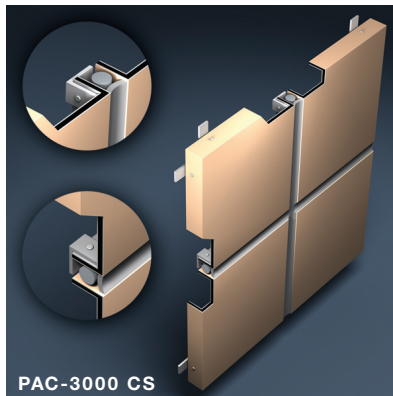
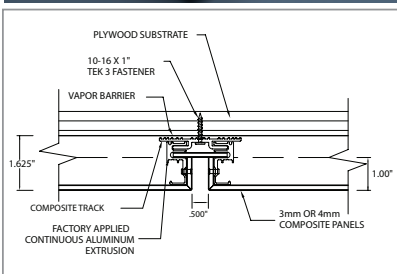


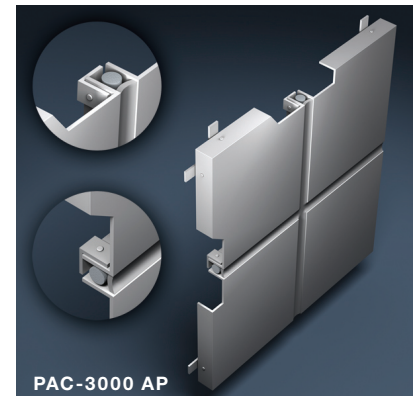
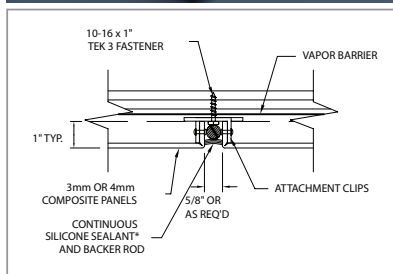
COMPOSITE WALL PANELS



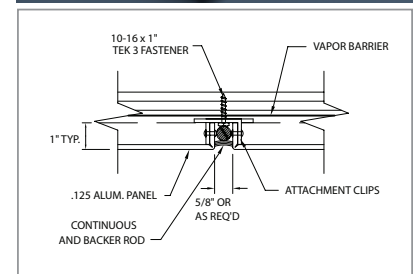
PAC-3000 RS



PAC-3000 CS



PAC-3000 AP



PRODUCT FEATURES

- Available in a wide variety of colors and finishes
- Precise fabrication to meet exacting tolerances
- Rout-and-return fabrication
- Welded Corners Available

MATERIALS

- 3mm, 4mm, 6mm – Composite
- .063 - .125 Mill Finish Aluminum
- Zinc
- Copper
- Stainless Steel
- Anodized Aluminum

TESTS

- ASTM E283
- ASTM E330
- ASTM E331



www.pac-clad.com | 800-PAC-CLAD

©2008-2009 Petersen Aluminum Corporation