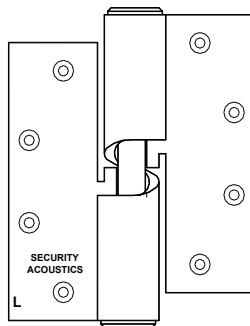


## **PERIODIC MAINTENANCE FOR SECURITY ACOUSTICS DOOR AND FRAME ASSEMBLIES**

Periodic maintenance of acoustic door assemblies is very important and the following are recommendations to assist the end user in this task:

### **GRAVITY GLIDE HINGES**

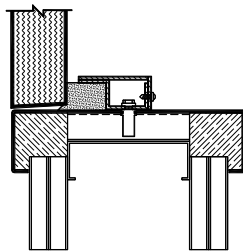
These hinges are factory lubricated prior to shipment and should be inspected every 12 months to ensure free motion and additional lubrication may be required at that time. This can be done by removing the cap from the top of the hinge barrel and squirting in several drops of high quality oil. Assemblies in extremely high use or exterior areas may require more frequent lubrication. Note that although these hinges are manufactured from 17-4 stainless steel they may rust in exterior or high humidity areas, therefore field painting is recommended.



### **SOUND TIGHT PERIMETER SEALS**

Perimeter seals are optimally adjusted by the installer but could require additional adjustment after extended periods of use. Proper adjustment can be checked by inserting a credit card between the neoprene and the door which should slide in tightly and not fall out. If additional adjustment is necessary, remove the sound seal cover, loosen the  $\frac{1}{2}$ -20 screws in the retainer assembly, slide the retainer assembly toward the door, retighten and replace the cover. The contact point between the door and neoprene can be lightly coated with a silicone lubricant to prevent the seal from adhering to a painted finish on the door

and caution should be exercised to prevent any paint from coming in direct contact with the neoprene. Hardware should never be installed directly to the perimeter seal assembly and heavy Z shaped standoff brackets are supplied for this purpose.

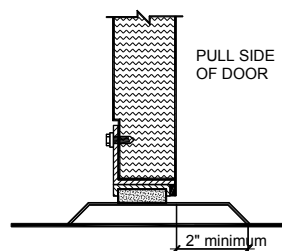


### **L-FRAME DOOR BOTTOM**

Maintenance on the door bottom is similar to what is required for the perimeter seals.

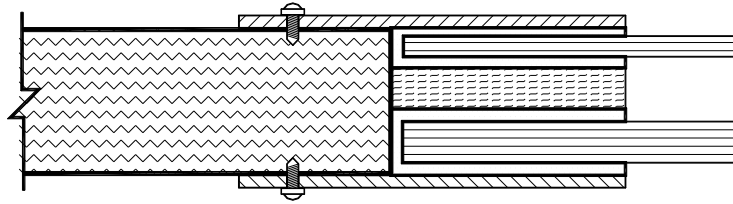
### **THRESHOLD**

Thresholds should be checked to ensure they are tight fitting to the slab, level and completely filled with concrete, plaster or mastic. These should never be installed atop carpeting or similar floor finishes, should extend at least 2" past the pull side of the door and should have a smooth top to prevent deterioration of the door bottom seal when it comes in contact with the threshold.



## GLASS AND GLAZING

Little if any maintenance is required for glazed assemblies since they are normally a sealed, double glazed unit. Should one or more of the glass panes get broken or damaged or if any condensation collects inside, please contact our Customer Service Department for recommendations for replacement or etc.



**Note: For periodic maintenance on conventional type hardware not supplied by Security Acoustics such as standard type hinges, locks, exit devices, closers, mortised door bottoms and similar please contact the specific product manufacturer.**