

Bullet Guard®

13 40 00.11/BUL
BuyLine 4165

Design, Manufacture, Fabrication & Installation of Ballistic Products

What we do

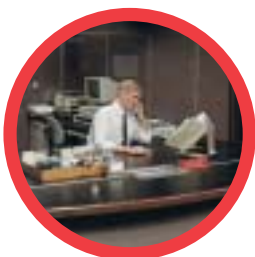
Bullet Guard is a design-build systems supplier and/or installer of bullet resisting (proof) products. Projects are taken from concept, through design, into fabrication and manufacture. They are either supplied or installed, as the customer chooses.

We are here to help you, the architect and builder, make a bullet and bomb resisting protective armoring system you can be proud to present to your customer. Interior lobby security and access control is our speciality. Our Step by Step process and capabilities are outlined in this brochure. Call us at 800-233-5632.

All design-build bullet resistant (proof) requirements can be met with one company, *Bullet Guard*. Made in America



We Harden the Target



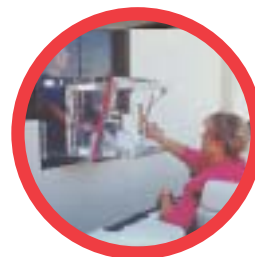
Government



Banking



Commercial



Fast Food



Residential

Step 1

Consultation on Levels of Threat and Design Implications

The first thing that an architect or builder has to determine from the user is what is the anticipated threat level. What caliber of weapon do you want to stop? Bullet resistant building products adhere to Underwriters Laboratories Standard 752 for testing and general concept of good bullet resistant protection.

UL Ballistic Levels are Level 1 through 8. *Most commonly used are:*
Level 1, Medium Power Small Arm (MPSA) 38 cal., 9mm
Level 2, High Power Small Arms (HPSA) 357 magnum
Level 3, Super Power Small Arms (SPSA) 44 magnum
Level 5, High Power Rifle (HPR), 7.62

The staff at *Bullet Guard* will assist you through the determination of the appropriate Ballistic Level for your project. Our live fire testing facility is available to assist you in the decision making process.

Underwriters' Laboratories is an independent laboratory whose standard UL 752 is used as the industry standard for *architectural* bullet resistant applications in determining different *levels* of protection by caliber and velocity of weapon.

We design bullet resistant enclosures every day. Please, give us your bullet resistant requirements and we will design the project for you, at no additional fee!

Step 2

Design & Owner Acceptance

Use our experience to design applications that perform

We can supply your location with a very simple transaction window or a complete site-specific-designed enclosure suitable for a bank, an embassy, an office lobby or other commercial application. If necessary, we can make the windows rise or slide as for convenience stores for fast food establishments. We make drive-thru windows and walk-up windows for take out. We are a full service, "designs to meet the threat", company. There is no job too small or too large in threat level for *Bullet Guard*.

Bullet Guard Corporation has been in the security business since 1976 and an Architectural Armorer providing bullet resistant protection since 1985. Our product line is scrupulously monitored for its bullet stopping ability by use of our in-house live fire testing facility. All of our transparent and opaque materials are listed by Underwriter's Laboratories Standard 752. We place these materials into *Bullet Guard's* Ballistic Capture frames to insure complete bullet resistance and to prevent excessive force "pop-out".



Lobbies
Government
Corporate
Police/Sheriff/Fire
Post Offices
News Media
Data Centers



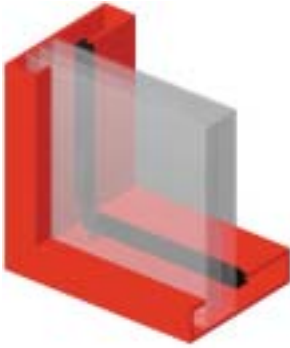
Transaction Windows & Counters
Financial Institutions
Check Cashing
Fast Food Service Counters
Drive-Thrus & Walk-Ups
Pharmacies
Convenience & Liquor Stores



Government & Law Enforcement
Courthouses
Social Services
Revenue Collection Agencies
Licensing Agencies
Regulatory Agencies
Pre-assembled Judge Bench Panels

Materials, Components, Details

(See Back Cover for Material Specifications)



To prevent "pop-out" under force, Bullet Guard's Ballistic Capture Frames are carefully calculated as to thickness and size of material in ratio to rabbet depth of edge engagement

Most bullet resisting protection includes at least one window, a shelf with a tray for passing money or paper, wall armor and possibly a pass through (pass-thru) for larger articles or merchandise and at least one entry door. We supply all the bullet resisting sections including the amenities that make them attractive in a retail or office environment.

Custom & Modular Components

Bullet resistant windows.

Bullet resistant transaction windows.

Bullet resistant doors:

- Aluminum framed, wood, transaction metal
- All clear, Full Lite, Half Lite, Man traps

Bullet resistant fiberglass wall armor panels.

Bullet resistant natural communication or intercoms.

Bullet resistant pass-thru for paper, money or merchandise.

Bullet resistant walk-up or pass-through windows.

Bullet resistant drive-thrus for car lanes.

Bullet resistant and fire rated lobby wood and metal doors.



CAD and Custom Design Services



Walk-up Window



Mantrap

- Design-Build Systems
- CAD Design Services
- Custom and Pre-Made



Modular Booths



Solid Core Fire Rated Door

Fabrication

Whether for retrofits or new construction, custom or modular designs, *Bullet Guard* products are premade in our factory and delivered to the job site for final installation by *Bullet Guard's* trained crew or by others. This method allows for quality control under factory conditions and limited disruption at the job site.

- Made to Order
- Exacting Ballistic Tolerances
- In-Shop Quality Control



On-Site Installation

Products are factory assembled to approved shop drawings. Product is either shipped for installation by others or installed by factory trained crews headed by licensed general contractors. *Bullet Guard* is national in scope.

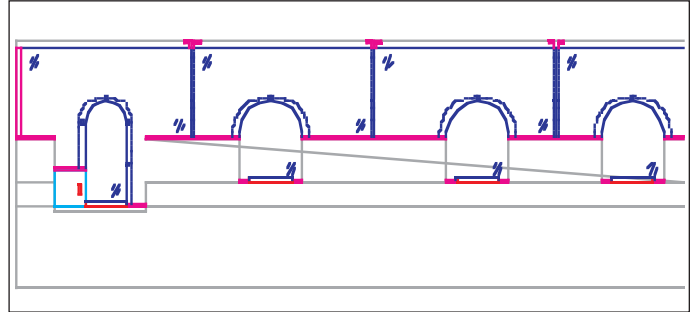
- Professional Tradesmen
- After Hours/Weekend
- Clean, Ready to Occupy



APPLICATIONS



BUTTED DESIGN WITH ARCHED VOICE PORTS



BANKING

Architectural armor built into milwork.

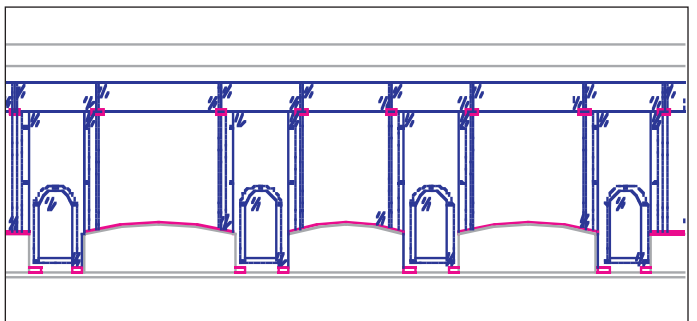
Bullet resistant acrylic or polycarbonate UL-752 levels 1-3

Bullet Guard will assist architects and end users with a retrofit or new design for custom teller lines that make use of very aesthetically pleasing designs that allow for natural sound transmission without the use of amplified intercoms. The picture above is of a bank that utilized arched voice ports and a butted

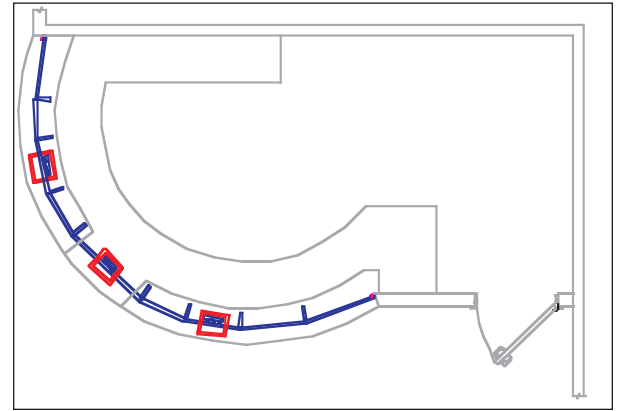
design. The picture below is a credit Union that utilized a vertical offset design and arched voice ports. This design allows for more air circulation behind the bullet resistant barrier and for natural sound transmission. Both locations have *Bullet Guard* Architectural Armor under the counter and in the hoods above.



VERTICAL OFFSET DESIGN WITH ARCHED VOICE PORTS



CREDIT UNION FINANCIAL



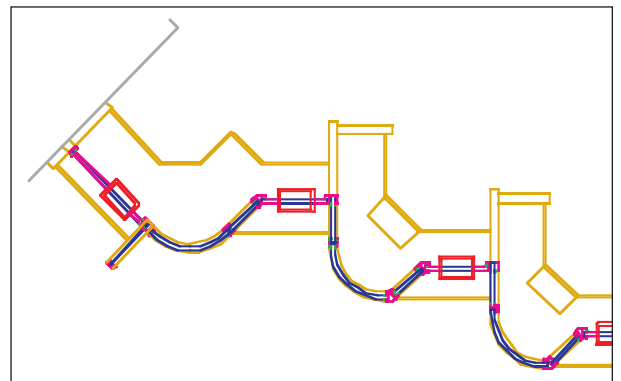
GOVERNMENT / POLICE / FIRE / CUSTOM KIOSKS

Custom kiosks and special projects are our specialty. Call us for help in your design phase and we will also assist in writing the specifications. The above picture is a security kiosk for the Federal Government. It is a custom corner configuration with a butted design and closeable round voice ports. This allows the guard / employee to minimize noise in the lobby by closing the voice ports when there is no need to speak to someone. The voice ports open easily when a customer approaches.

The photo below is of the Santa Clara Hospital emergency room in San Jose, CA. It is a custom private interview booth that allows customers some privacy with the curved sit down design. Only one company can design and build such a beautiful and safe enclosure. Call Bullet Guard for your next special project.



CUSTOM CURVED GLASS APPLICATIONS



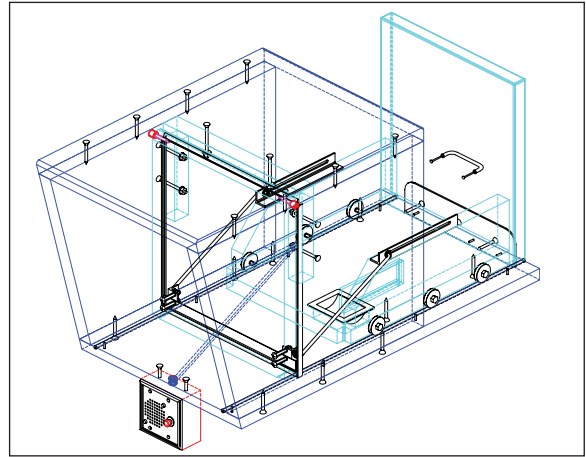
PRIVATE INTERVIEW BOOTHS

HOSPITAL

APPLICATIONS



DRIVE UP PASS THROUGH



US PATENT # 5,205,224

FAST FOOD

Bullet Guard will design a custom drive up window for banking, fast food and check cashing. The most dependable bullet resistant window on the market is all clear for security. We offer a stainless steel cladding when desired. Offered in UL-752 levels 1-3.

Listen to what our customers say, "We are pleased with the extra level of safety afforded to our employees at the stores equipped with Bullet Guard drive thru windows and enclosures." John Prchal Sr. Field Manager, Assets Protection Department Taco Bell Corporation.

AVAILABLE PRODUCTS

- ▶ **ARCHITECTURAL ARMOR / BULLET RESISTANT FIBERGLASS PANELS**
- ▶ **TRANSACTION WINDOWS**
- ▶ **FIXED WINDOWS**
- ▶ **WOOD DOORS**
- ▶ **STEEL DOORS**
- ▶ **PACKAGE PASSERS**
- ▶ **TRANSACTION TRAYS**
- ▶ **DRIVE UP AND WALK UP WINDOWS**
- ▶ **GLAZING PRODUCTS**

Because Everyone Deserves a Safe Workplace

When threat of violence occurs, the first obvious reaction is to, **“Get Down”**.

This being the case, the perceived “safe” area should be armored with the very best protective material because most building materials such as drywall and plywood **will not stop bullets!**

Also, for safety and liability purposes, the possibility of bullets ricocheting off of hard surfaces and zinging around the lobby is to be **avoided at all costs.**

IF your business is a target for violence and you don't want your staff to be added to the growing numbers of the 2 million people annually affected by violent crime as reported by the U.S. Justice Department's Bureau of Statistics, **then your business needs.**

The PROOF
is in the Product



Bullet Resistant Wall & Cabinet Armor

Bullet Guard Architectural Armor is a multi-ply bullet and blast resisting fiberglass laminate.

- UL-752 Listed
- Non Ricochet
- High Strength

Also available with forced entry protection per ASTM F1233-98.

APPLICATIONS

Financial Institutions
Convenience Stores
Hotel Lobbies
Court Rooms
Judge Benches
Hospitals
Fast Food Outlets
Safe Rooms
Computer Rooms
Government Facilities
Ballistic Doors
Kiosks & Guard Stations
Business Lobbies

SPECIFICATIONS

Sizes available: 3' x 8', 3' x 9', 3' x 10', 4' x 8', 4' x 9', 4' x 10', 5' x 8', 5' x 9', 5' x 10' flat sheets, or special cuts upon request.

Material

- **UL-752* Listed** & NIJ0108.01 Tested.
- Non-Spalling
- Lightweight
- Heat pressed resin impregnated fiberglass layers.

*Underwriter's Laboratories Standard 752 & U.S. Dept. of Justice

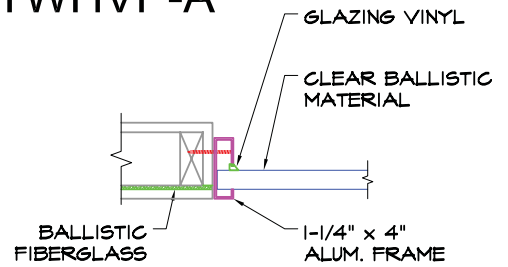
ASTM E119-98 ONE-Hour Fire Rating

Product	Nominal Thickness Inches.	Nominal Weight Lbs. S /F	UL-752 9th Edition NIJ0108.01 Levels	Weapons & Bullet Description	Impact Velocity Feet per second	Number of Shots
BGAA-01	1/4"	2.60	UL-1	9mm 124 gr. Lead FMJ	1175	3
BGAA-02	5/16"	3.6	UL-2 NIJ-IIA	357 MAG 158 gr. JSP 9mm 124 gr. FMJ	1250 1090	3
BGAA-03	7/16"	5.0	UL-3 NIJ-II & IIIA	.44 MAG 240 gr. Lead 9mm 124 gr. FMJ	1350 1400	3
BGAA-04	1-3/8"	14	UL-4	30 Cal 180 gr. LSP	2540	1
BGAA-05	1-7/16"	15	UL-5	7.62mm 150 gr. FMJ mil ball	2750	1
BGAA-06	3/8"	3.9	UL-6	9mm 124 gr. Lead FMJ	1400	5
BGAA-07	1-1/8"	12	UL-7	5.56mm 55 gr. FMJ Lead	3080	5
BGAA-08	1-7/16"	15	UL-8	7.62mm 150 gr. FMJ mil ball	2750	5

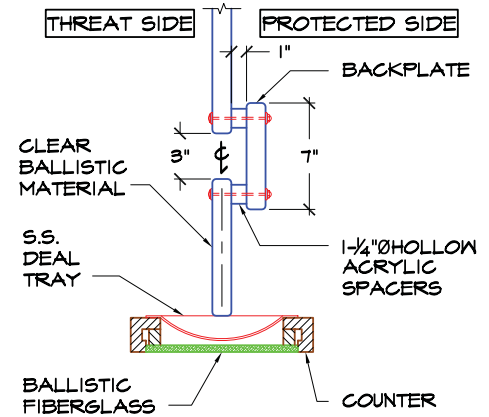
INSTALLATION: Use ordinary carpentry tools (circular, table, panel or saber saw, carbide tip blade is recommended). Predrill using high speed steel twist drill bits at low speed. Screws or bolts are preferable to adhesive. Adhesive may be used to secure finish such as plastic laminate. All butt joints require 4" wide batten strip backing of fiberglass to provide 2" either side of seam to insure ballistic integrity. Keep joints as tightly together as possible.



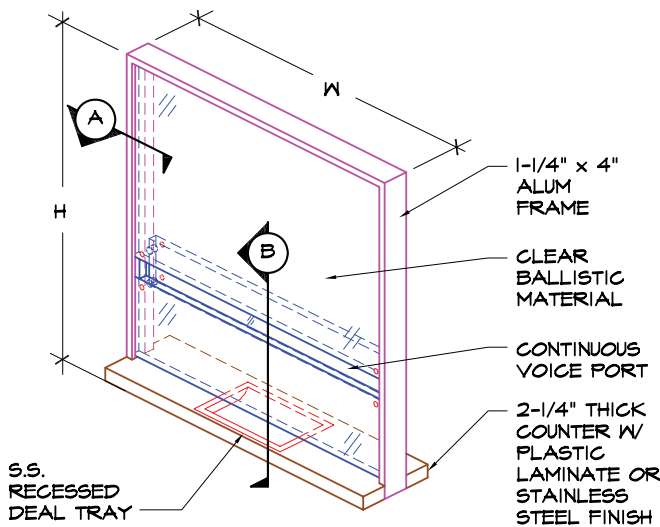
MODEL # TWHVP-A



(A) ALUMINUM JAMB
SIM @ HEAD

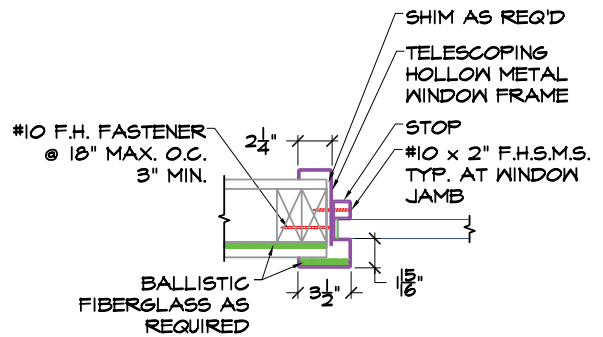


(B) SECTION @ DEAL TRAY



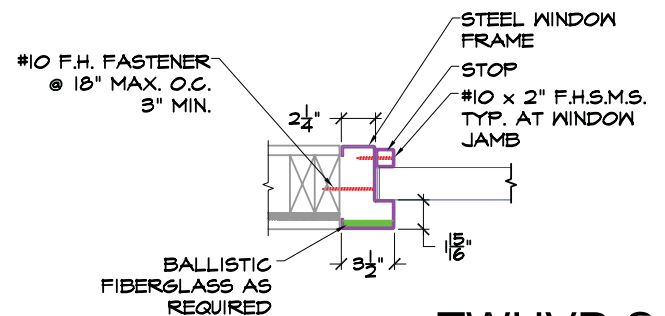
ISOMETRIC

Transaction window with horizontal voice port. Specify specific level of protection desired and frame system. Sizes available up to 8'w x 5'h.



(A) STEEL TELESCOPING JAMB
SIM @ HEAD

TWHVP-TS



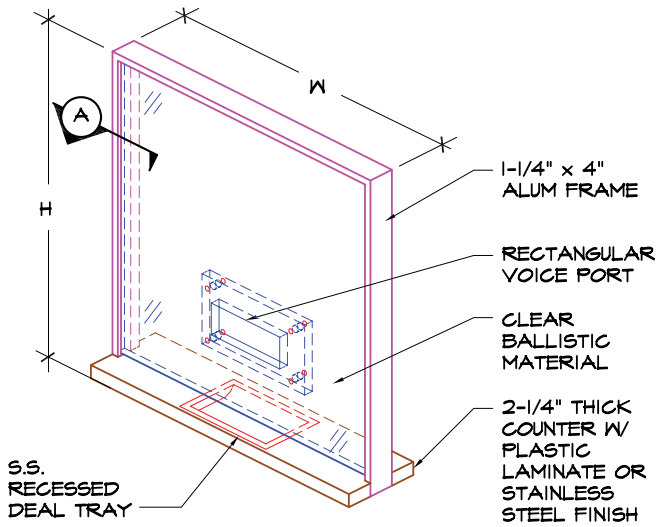
(A) STEEL JAMB
SIM @ HEAD

TWHVP-S

TRANSACTION WINDOW

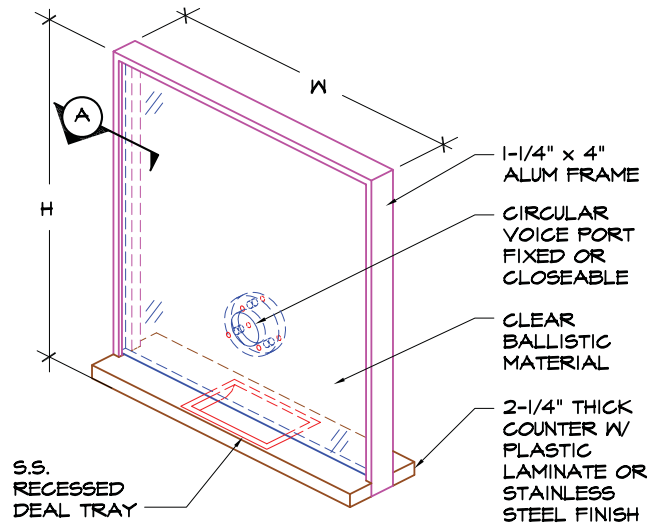
VOICE PORT OPTIONS

MODEL # TW_VP-__



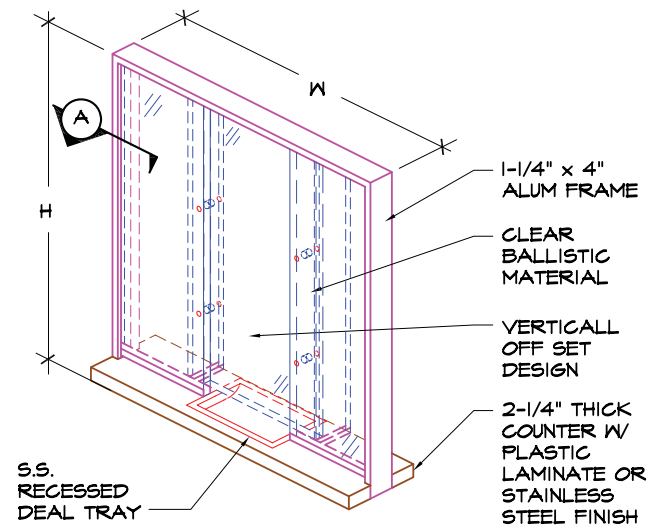
RECTANGULAR VOICE PORT

TWRVP-A



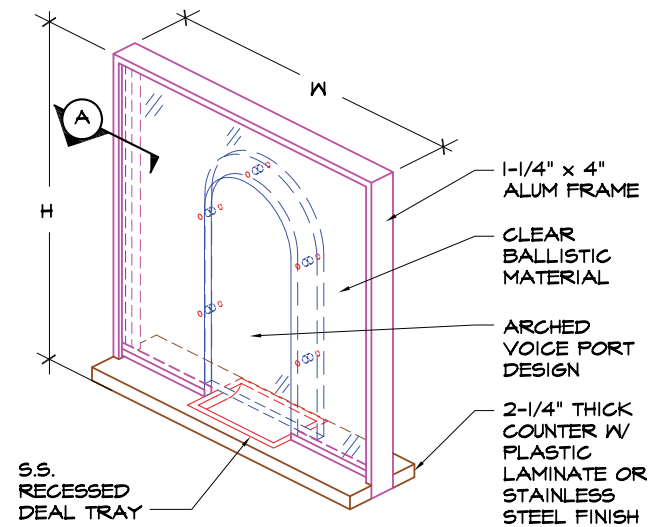
CIRCULAR VOICE PORT

TWCVP-A



VERTICAL OFFSET

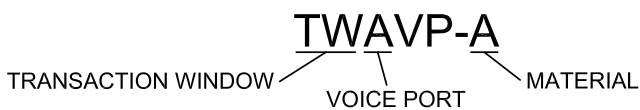
TWVVP-A



ARCHED VOICE PORT

TWAVP-A

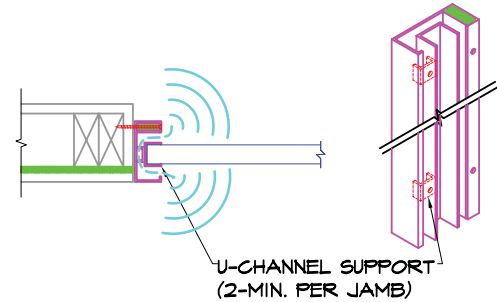
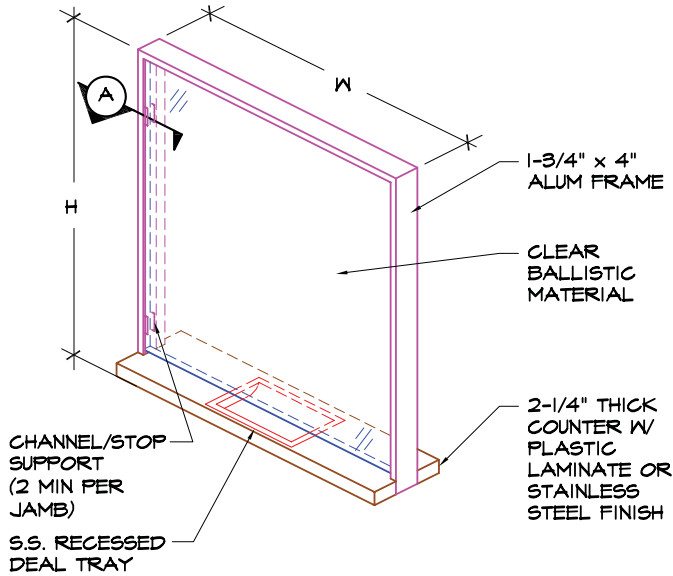
Architects specify TW (transaction window)
 3rd letter is voice port (R = rectangular, C = circular, A = arched, V = vertical)
 Last letter is frame material (A = aluminum, S = slip in steel, TS = telescoping steel)



Architect note: R, C, A voice ports available in UL levels 1-3 protection. HVP and VVP available in UL levels 1-8

VOICE SURROUND

MODEL # TWVS-A



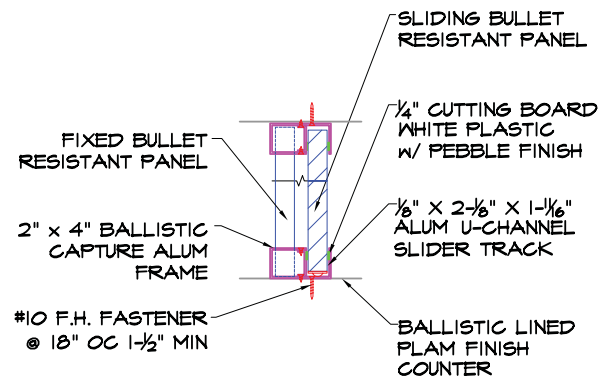
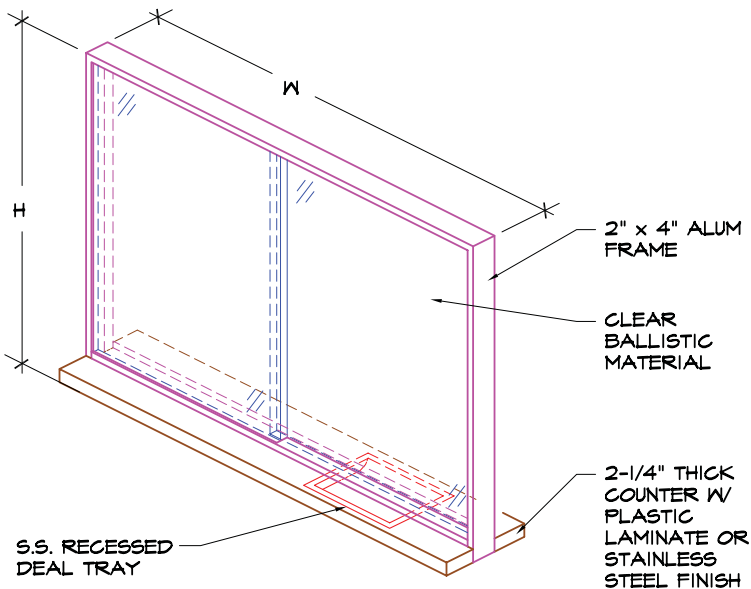
ISOMETRIC

(A) VOICE THROUGH FRAME (ALUMINUM JAMB)

Voice surround transaction windows are available in UL levels 1 - 8. Also available in stainless steel. Specify TWVS-SS.

SLIDING WINDOW

MODEL # TWS-A

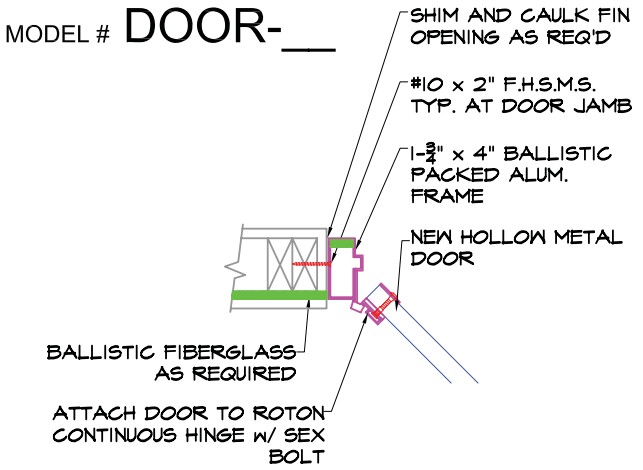


ISOMETRIC

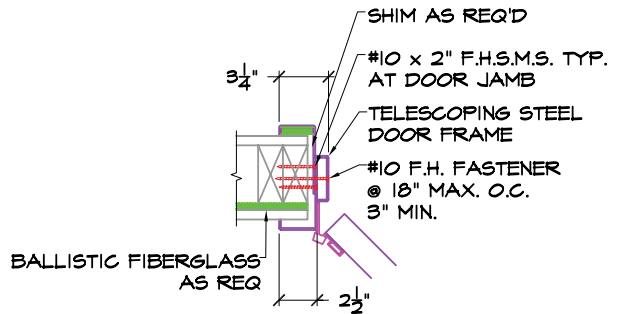
(A) ALUMINUM SLIDING TRACK

Sliding windows are available in UL levels 1 - 3.

BULLET RESISTANT DOOR



ALUMINUM DOOR JAMB



TELESCOPING STEEL DOOR JAMB

All doors are shown with 1-3/4" x 4" ballistic packed aluminum frames. Solid core doors are finished in plastic laminate and paint or stain grade veneer. View windows are optional. Frames are powder coated and B.G. can match any desired color



DOOR-AC
ALL CLEAR



DOOR-FL
FULL LITE



DOOR-HL
HALF LITE



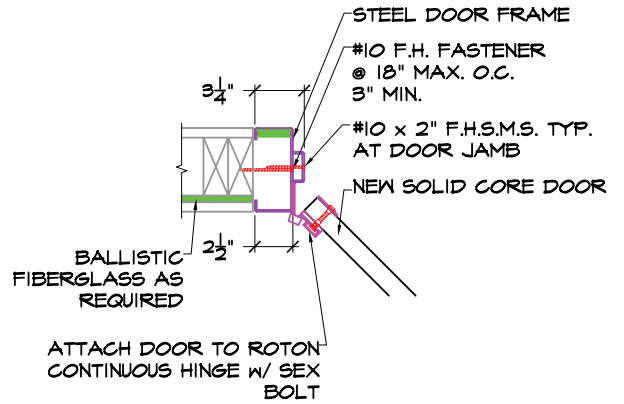
DOOR-SCV
SOLID CORE
w/VIEW WINDOW



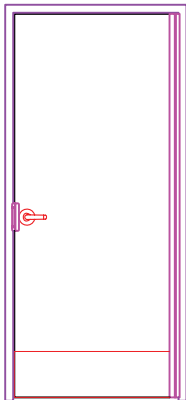
DOOR-SC
SOLID CORE



MODEL # DOOR-HM

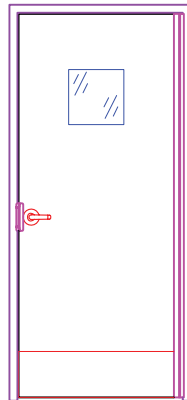


STEEL SLIP IN DOOR JAMB



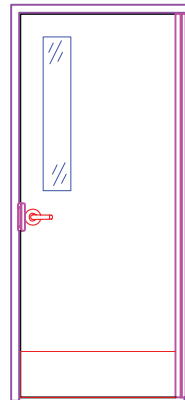
DOOR-HM

HOLLOW METAL



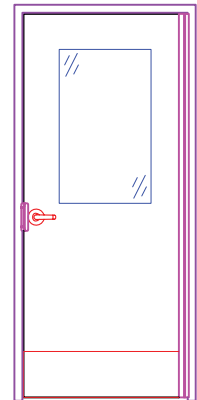
DOOR-HMV

HOLLOW METAL
VIEW WINDOW



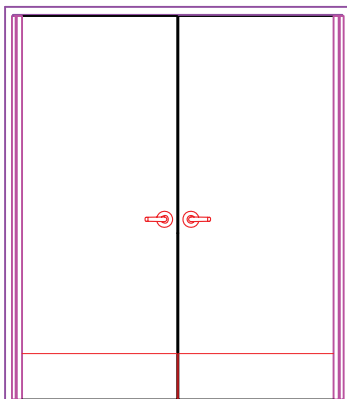
DOOR-HMNL

HOLLOW METAL
NARROW LITE



DOOR-HMHL

HOLLOW METAL
HALF LITE



DOOR-HMDD

HOLLOW METAL
DOUBLE DOOR

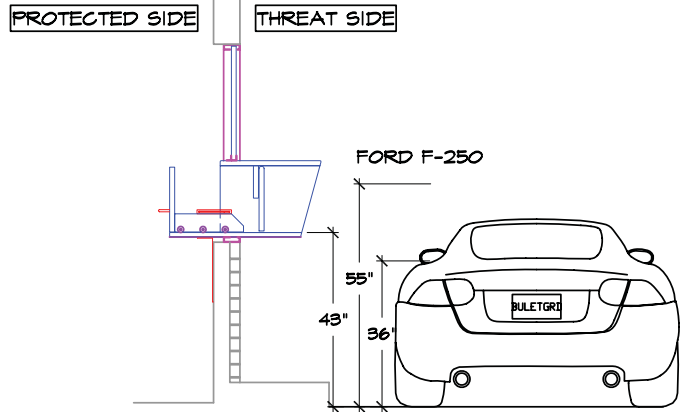
Doors are available in UL-752 levels 1 - 8. Door frames are available in aluminum, slip in steel, or steel wrap around.

DRIVE UP PASS THRU

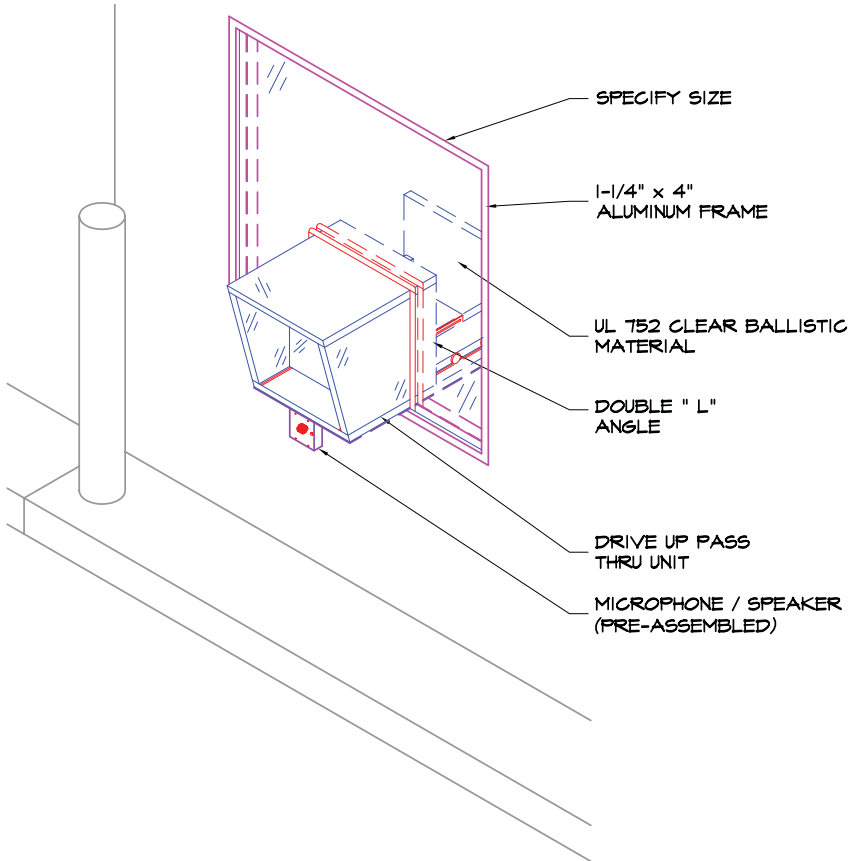


MODEL # DUPT

WINDOW SILL HEIGHTS	
HONDA CIVIC	36"
CHEV COBALT	37"
MERCEDES X-5	47"
FORD F-250	55"



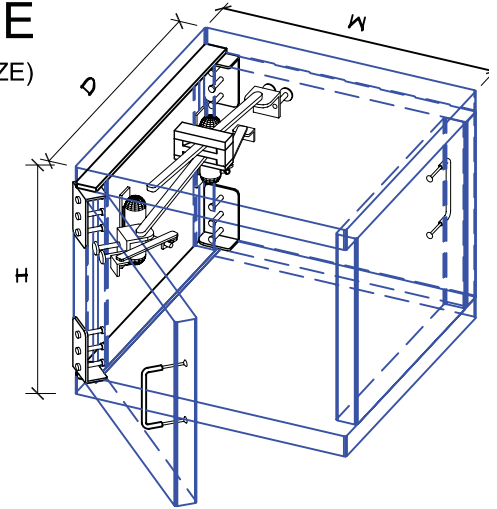
DUPT HEIGHT



The Bullet Guard Drive-Up Pass-Thru was engineered to meet a growing need to protect employees at drive-up windows. Ease and smooth action of moving parts on the Bullet Guard Drive-Up Pass-Thru assure the fast, efficient service drive-up customers expect. The customer does not have to leave the car to receive the product. The Drive-Up Pass-Thru in the 'product out' position reaches out to the customer. The Bullet Guard Drive-Up Pass-Thru is made of a high quality, extremely transparent UL 752 rated material. This material allows the employee complete ballistic protection during all phases of a transaction while maintaining a friendly, customer service oriented atmosphere. The Bullet Guard Drive-Up Pass-Thru is designed specifically for retail / fast food installations.

DRIVE UP PASS THRU (DUPT)

MODEL # PE
(SPECIFY SIZE)



PACKAGE EXCHANGE

MODEL	WIDTH	HEIGHT	DEPTH
MONEY	12"	14"	16-1/2"
DRINK	16"	14"	16-1/2"
TRAY	16"	14"	22"
PIZZA	22"	16"	28"
NON-STANDARD	VARIES		16-1/2" 22" 28"



Optional stainless steel cladding for package exchange. Custom units available up to UL-752 level 8.

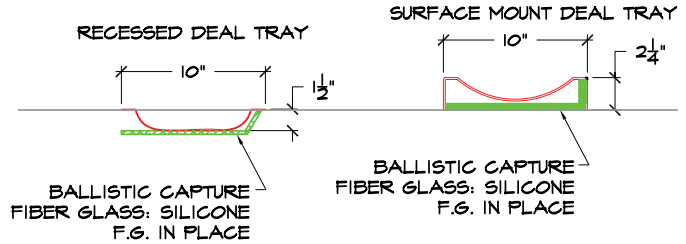


Custom large package exchanges for use in post office and cash vaults where carts are pushed through. Custom locking device allows only one door open at a time. Available in transparent materials in UL-752 levels 1 - 3. Available up to UL-level 8 in opaque materials.



MODEL # 1210RDT

STANDARD SIZES: 10" x 12" AND 10" x 16"
CUSTOM SIZES ARE ALSO AVAILABLE



STAINLESS STEEL DEAL TRAY



Glazing Materials



357 Magnum captured in Level 2 Polycarbonate

POLYCARBONATE: Captures the bullet, no spall, no ricochet.

This laminated material is available in Levels 1, 2 & 3. Good for interior and exterior use. Can be used with minimal framing. Unframed edges will polish to clear. Can be fabricated for natural voice communication using voice ports and back plates or offset designs. Polycarbonate has a slight tint which can be better for high glare areas and has proven to provide better CCTV camera resonance for better resolution of photos for identification and/or surveillance purposes.

Bullet Guard uses laminated polycarbonate manufactured by **Sheffield Plastics Inc.**, a Bayer Company. Sheffield offers Makrolon Hygard™ laminates in six levels of protection ranging from containment rated sheet to UL Level 3 bullet resistant material capable of withstanding multiple rounds from super powered handguns. Hard coated surfaces offer resistance to abrasion, UV degradation, delamination and discoloration. Lightweight and easy to fabricate for new or remodel applications. Sheffield's high production standards and newer extruders eliminate ripples and defects making their sheet goods more acceptable to open designs than the competition

Glazing Material	UL -752	Nominal Thickness	Comments
*Laminated Polycarbonate			*(Makrolon Hygard™)
*BR750	Level 1	3/4" (mm)	Non-ricochet (Recommended), minimal framing
*BR1000	Level 2	1" (mm)	Non-ricochet (Recommended), minimal framing, interior & exterior
*BR1250	Level 3	1-1/4" (mm)	Non-ricochet (Recommended), minimal framing, interior & exterior
Glass Clad Polycarbonate	Levels 1-3	3/4" (19.3mm) to 1-1/4" (29.9mm)	Exterior work, higher ballistic levels possible, frame 4 sides
Acrylic	Levels 1-2	1-1/4" (mm)	Maximum clearness, economical
Laminated Glass	Levels 1-3	1-1/4" (32.5mm) to 2-3/8" (60.2mm)	Abrasion resistant, exterior use, heavier than plastics, frame 4 sides
Liquid Crystal			Bullet resistance plus privacy

*Manufactured by Sheffield Plastics Inc., 800-254-1707, www.sheffieldplasticsinc.com, 119 Salisbury Road, Sheffield, MA 01257