

SPECIALTY ACCESS PRODUCTS

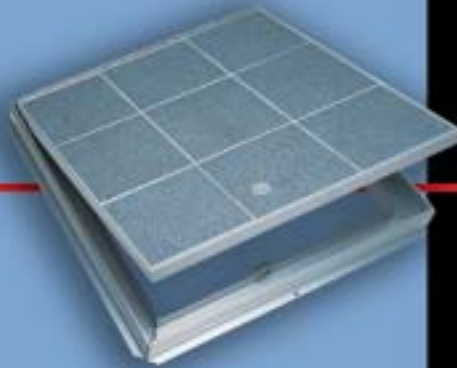
08 31 13/BIB
BuyLine 0032



2008 Catalog



Drainage
Floor Doors



Non-Drainage
Floor Doors



Fire-Rated
Floor Doors



Introduction

The Bilco Company has served the building industry since 1926. Under the same family ownership and management since its beginning, the Company has been a pioneer in the development of the unique line of specialty access products found within this catalog. In addition to the products shown, Bilco also specializes in the custom design and manufacture of specialty access solutions. Years of engineering experience combined with the most modern equipment available allow Bilco to design access products for virtually every application.



Main Office/Manufacturing —
West Haven, Connecticut



Manufacturing —
Trumann, Arkansas

Your Assurance of Quality



All Bilco products are designed to provide many years of trouble-free service. In addition, Bilco, an ISO 9001 certified company, has a highly skilled customer service department and an international network of factory-trained representatives ready to provide whatever service or assistance you may require.

More Information Available

For more information, including product submittal sheets, 3-part specifications and CAD details, log onto www.bilco.com. Bilco products can also be found on Sweet's CD and on numerous sites on the Internet.

See Sweets files for other Bilco Products:
AEC 07 72 00/BIL Roof Scuttles
FOE 07 72 00/BIL Roof Scuttles
RES 08 31 13/BIL Basement Doors
RES 10 74 46/BIL Window Wells

LadderUP® Safety Posts

The easy to install, easy to use extension device for fixed ladders under access hatches.



The spring balanced LadderUP® permanently mounts on the top two ladder rungs and telescopes up and down, locking in the upright position. This enables service personnel to enter or exit the vault or manhole in an upright and balanced position, as though the interior ladder extended above grade level. A handy release lever allows the LadderUP® to be lowered to its retracted position.

MODEL	MATERIAL/FINISH	WEIGHT	
		lbs.	kg.
LU-1	Steel, black powder coat	24	11
LU-2	Steel, hot dip galvanized	24	11
LU-3	Type 304 Stainless Steel	24	11
LU-4	Aluminum, mill finish	14	7



P.O. Box 1203
New Haven, CT 06505
(203) 934-6363
Fax (203) 933-8478
www.bilco.com
e-mail: bilco@bilco.com

U.S. and International Bilco patents issued and pending...

2,682,324	4,729,453	5,657,587	6,672,020
3,516,198	4,873,791	5,927,012	6,931,793
3,877,173	5,107,640	6,021,606	Canada:1971,
4,135,508	5,136,811	6,041,553	1974, 1977, 1985.
4,145,843	5,301,469	6,260,305	Other U.S. and
4,546,855	5,373,665	6,347,818	International patents
			issued and pending.

See complete list of sales representatives on the back cover

see us at
Sweets.com

©2008 The Bilco Company, New Haven, Connecticut 06505

Floor, Vault and Sidewalk Doors

Advantages and Features

- Provide reliable access to vaults and underground equipment
- Available in standard steel and aluminum sizes for drainage and non-drainage applications. In addition, Bilco can manufacture doors to virtually any size to meet your unique access requirements
- Engineered to include the proper combination of compression spring operators or torsion rods to provide smooth, easy and controlled operation
- Positive hold open arm engages automatically when the door reaches its fully open position
- Heavy duty hinges and a Type 316 stainless steel slam lock



Standard sizes and weights are on page 6.

Drainage Doors:

Constructed for use in exterior applications or in those situations where there is concern of water or other liquids entering the access opening. These units are supplied with a threaded drain coupling — fully welded to the channel frame — for connection to a dry or wet well in the field.



Type J-AL & JD-AL Single or Double Leaf Aluminum Construction

Ideal for most corrosive environments. Single or double leaf covers are constructed of 1/4" (6.35mm) diamond pattern plate and reinforced for a 300 lb/ft² (1464 kg/m²) live load. Features all anti-corrosion hardware, a standard debris gasket and a versatile anchoring system for ease of installation.

Additional features on all J/JD aluminum doors:



Debris Gasket



Adjustable Anchor Tabs



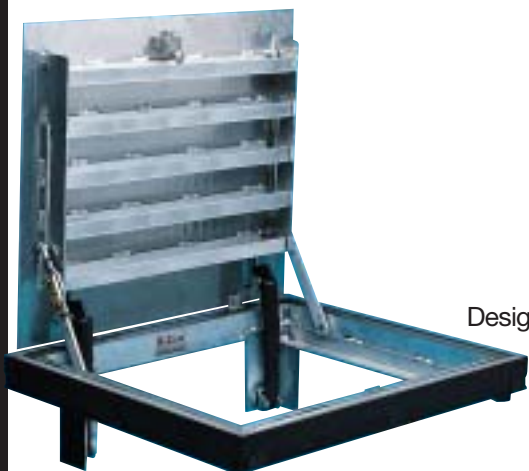
Forged Aluminum Hinges and Composite Spring Tubes

Bilco's Exclusive 25-Year J-AL Door Warranty

Type J-AL H20 & JD-AL H20

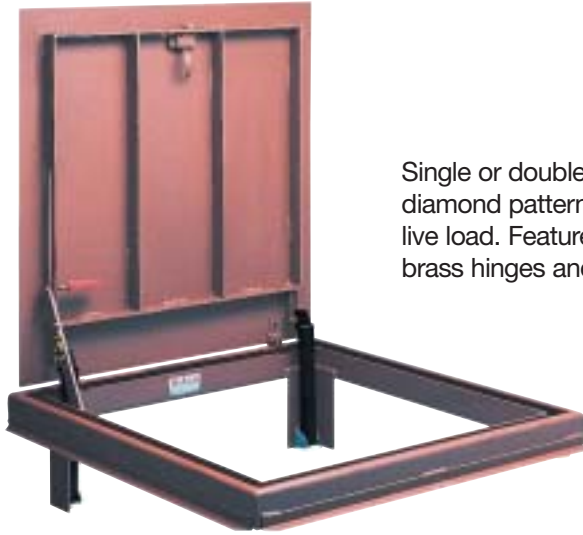
Single or Double Leaf Aluminum Construction

Designed to withstand vehicular traffic in off-street locations. Single or double leaf covers are constructed of 1/4" (6.35mm) diamond pattern plate and reinforced for AASHTO wheel loading. With all the same features as the Type J-AL, this door is also ideal for most corrosive environments.



Floor, Vault and Sidewalk Doors

Drainage Doors:



Type J & JD **Single or Double Leaf** **Steel Construction**

Single or double leaf covers are constructed of 1/4" (6.35mm) diamond pattern plate and reinforced for a 300 lb/ft² (1464 kg/m²) live load. Features reinforced composite spring tubes, heavy forged brass hinges and zinc plated/chromate sealed hardware.



Type J-H2O & JD-H2O **Single or Double Leaf** **Steel Construction**

Designed to withstand vehicular traffic in off-street locations. Single or double leaf covers are constructed of 1/4" (6.35mm) diamond pattern plate and reinforced for AASHTO wheel loading. Features reinforced composite spring tubes, heavy forged brass hinges and zinc plated/chromate sealed hardware.

Fire-Rated Floor Doors:

Type FR **Single Leaf** **Aluminum Construction**

Maintains the fire rating of a 2-hour floor/ceiling assembly where access is required between building floors. Features include an optional automatic closing system, intumescent fire-resistant coating, and a pan cover designed to accept architectural flooring materials.



Complies with
ASTM E119
BS476: Part 22
NFPA 80
NFPA 251

Floor, Vault and Sidewalk Doors

Non-Drainage Doors:

Generally for interior use or exterior applications where water or liquid infiltration is not a concern. As indicated, some of the models shown are designed to accept a wide variety of flooring materials, allowing them to blend into virtually any building environment.

Type K & KD Single or Double Leaf Aluminum Construction

Single or double leaf covers are constructed of 1/4" (6.35mm) diamond pattern plate and reinforced for a 150 lb/ft² (732 kg/m²) live load. Features zinc plated and chromate sealed hardware, concealed hinges and the T-CAM® lifting system for ease of operation.



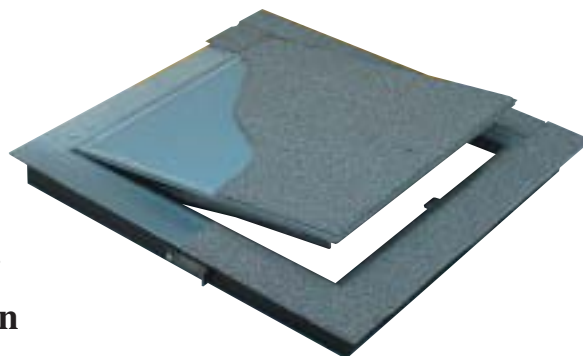
Type Q Single Leaf Steel Construction

Single leaf covers are constructed of 1/4" (6.35mm) diamond pattern plate and reinforced for a 150 lb/ft² (732 kg/m²) live load. Features zinc plated and chromate sealed hardware, concealed hinges and the T-CAM® lifting system for ease of operation.



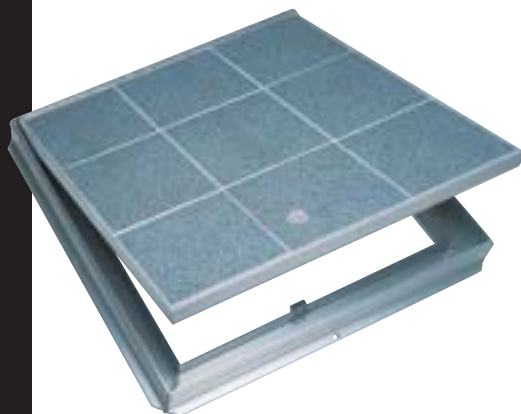
Type T & TD Single or Double Leaf Aluminum Construction

Single or double leaf doors are virtually hidden in interior applications. Will accept carpet or composition flooring material 1/8" (3.18mm) or 3/16" (4.76mm) in thickness. Features cover-and frame-mounted molding strips to accept floor covering and Type K hardware and construction.



Type TER & TRD Single or Double Leaf Aluminum Construction

Similar to the Type T in function, these single and double leaf doors are designed with a pan cover to accept a variety of flooring materials up to 1" (25.4mm) in thickness. Each door is spring balanced at the factory to ensure smooth, easy operation upon installation of the specified flooring material in the field.



Floor, Vault and Sidewalk Doors

Standard Sizes and Weights Contact Bilco for special size requirements

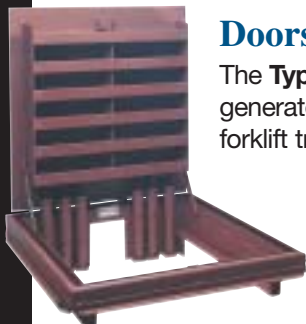
DRAINAGE DOORS										
LIVE LOAD = 300 lb/ft ² (1464 KG/M ²)		PIT, VAULT, TRENCH, SIDEWALK & FLOOR INSTALLATION						PRECAST INSTALLATION		
SIZE		STEEL			ALUMINUM			ALUMINUM		
(width x length)		Model #	Weight		Model #	Weight		Model #	Weight	
inches	mm		lbs.	kg.		lbs.	kg.		lbs.	kg.
24 x 24	610 x 610	J-1	179	81	J-1AL	65	30	PCM-1	71	32
30 x 30	762 x 762	J-2	231	105	J-2AL	88	40	PCM-2	93	42
36 x 30	914 x 762	J-3	274	124	J-3AL	97	44	PCM-3	100	46
36 x 36	914 x 914	J-4	300	136	J-4AL	108	49	PCM-4	116	53
42 x 42	1067 x 1067	J-5	402	182	J-5AL	135	61	PCM-5	145	66
48 x 30	1219 x 762	JD-1	365	166	JD-1AL	145	66	PDCM-1	146	66
48 x 48	1219 x 1219	JD-2	498	226	JD-2AL	173	79	PDCM-2	158	71
48 x 72	1219 x 1829	JD-3	652	296	JD-3AL	234	106	PDCM-3	250	113
60 x 60	1524 x 1524	JD-4	663	301	JD-4AL	241	109	PDCM-4	242	110
HIGH LOAD		VEHICLE LOAD (AASHTO H20 WHEEL LOAD) OFF-STREET WHEEL LOADING						200 LB/IN ² (14KG/CM ²)+30% IMPACT EXTREME LOAD INSTALLATIONS		
SIZE		STEEL			ALUMINUM			STEEL		
(width x length)		Model #	Weight		Model #	Weight		Model #	Weight	
inches	mm		lbs.	kg.		lbs.	kg.		lbs.	kg.
24 x 24	610 x 610	J-1 H20	250	113	J-1AL H20	122	55	HLC-1	425	193
30 x 30	762 x 762	J-2 H20	350	159	J-2AL H20	142	64	HLC-2	590	268
36 x 30	914 x 762	J-3 H20	425	193	J-3AL H20	178	81	HLC-3	750	340
36 x 36	914 x 914	J-4 H20	490	222	J-4AL H20	191	87	HLC-4	1014	460
42 x 42	1067 x 1067	J-5 H20	635	288	J-5AL H20	244	111	Consult Factory		
48 x 30	1219 x 762	JD-1 H20	532	241	JD-1AL H20	201	91	Consult Factory		
48 x 48	1219 x 1219	JD-2 H20	815	370	JD-2AL H20	291	132	Consult Factory		
48 x 72	1219 x 1829	JD-3 H20	1235	560	JD-3AL H20	499	226	Consult Factory		
60 x 60	1524 x 1524	JD-4 H20	1180	535	JD-4AL H20	456	206	Consult Factory		
NON-DRAINAGE DOORS										
LIVE LOAD = 150 lb/ft ² (732 KG/M ²)		PIT, VAULT, TRENCH, SIDEWALK & FLOOR INSTALLATION						FLOOR INSTALLATION FOR COVERING		
SIZE		STEEL			ALUMINUM			ALUMINUM		
(width x length)		Model #	Weight		Model #	Weight		Model #	Weight	
inches	mm		lbs.	kg.		lbs.	kg.		lbs.	kg.
24 x 24	610 x 610	Q-1	122	55	K-1	50	23	T-1	53	24
30 x 30	762 x 762	Q-2	166	75	K-2	65	30	T-2	68	31
30 x 36	914 x 762	Q-3*	190	86	K-3	77	35	T-3	81	37
36 x 36	914 x 914	Q-4	219	100	K-4	86	39	T-4	91	41
42 x 42	1067 x 1067	Consult Factory			K-5	109	50	T-5	113	51
48 x 48	1219 x 1219	Consult Factory			KD-2	152	69	TD-2	172	78
48 x 72	1219 x 1829	Consult Factory			KD-3	214	97	TD-3	224	102
60 x 60	1524 x 1524	Consult Factory			KD-4	222	101	TD-4	230	104
LIVE LOAD = 150 lb/ft ² (732 KG/M ²)		FLOOR INSTALLATION FOR CONCRETE, TILE, ETC					FIRE RATED FLOOR INSTALLATION			
SIZE		ALUMINUM			ALUMINUM			ALUMINUM		
(width x length)		Model #	Weight		Model #	Clear Opening		Weight		
inches	mm		lbs.	kg.		inches	mm	lbs.	kg.	
24 x 24	610 x 610	TER-1	100	45	Consult Factory					
30 x 30	762 x 762	TER-2	110	50	FR-2	29 x 23.75	736 x 603	271	123	
36 x 30	914 x 762	TER-3	120	54	FR-3	35 x 23.75	889 x 603	277	126	
36 x 36	914 x 914	TER-4	130	59	FR-4	35 x 29.75	889 x 755	326	148	
42 x 42	1067 x 1067	TER-5	165	75	FR-5	40 x 35.75	1041 x 908	368	167	
30 x 48	762 x 1219	Consult Factory			FR-6	29 x 41.50	736 x 1060	328	149	
48 x 48	1219 x 1219	TRD-2	200	91	Consult Factory					
48 x 72	1219 x 1829	TRD-3	275	125	Consult Factory					
60 x 60	1524 x 1524	TRD-4	285	129	Consult Factory					

Models with "D" in the Model # indicate double leaf configuration.

* Model Q-3 is hinged on the 36" side.

Special Application Doors

Along with its complete line of floor, vault and sidewalk doors, Bilco's extensive custom-design capabilities can provide you with the exact door you need for your unique applications. Contact The Bilco Company for more information on any of these products.



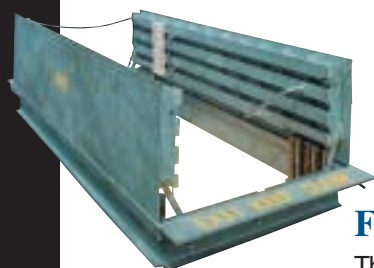
Doors for Extreme Loading Conditions

The **Type HLC** is specially designed for extreme loading conditions generated by vehicles such as large aircraft, heavy equipment and forklift trucks.



Precast Vault Access Doors

Type PCM & PDCM doors incorporate several innovative features which reduce the amount of labor required to cast the door into a concrete vault.

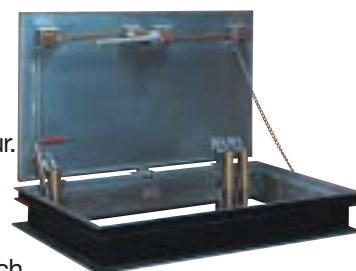


Emergency Evacuation Doors for Transit Systems

Type JD and JD-AL doors can be designed to provide egress from underground rapid transit system platforms and tunnels in emergency situations. Door is designed with stainless steel panic hardware and compression spring operators for ease of operation. Other important features include H-20 reinforcing, handrails, custom signage and a slip-resistant cover surface.

Floodtight Access Doors

The **Type WT** door is watertight under a 25 foot (7.62m) head of water. Designed for installation on controlled environment vaults (CEVs) and other applications where incidental flooding may occur.



Special Sizes

Type JD and JD-AL doors can be manufactured to virtually any size to meet your unique access requirements. Even extremely large doors, such as the one shown, are designed for easy operation by one person.



Odor Control Access Doors (not shown)

Type J-AL single leaf doors can be supplied with provisions for odor control by specifying **Type J-AL-R**. Doors are designed to contain odors and reduce the air leakage rate in odor emitting environments. Tested under a 1" (25.4mm) column of water, the Type J-AL-R door provides an air infiltration rate of less than 1.0 CFM per lineal foot of cover perimeter.

Options

Bilco floor, vault and sidewalk doors can include any of the option packages shown below. In addition, Bilco's engineering department will custom design doors for your unique applications.

Locking and Latching Devices The following lock options are available to add security and prevent unauthorized access:

- Lugs welded to the exterior door surface to receive a padlock.
- Cylinder lock with a keyway protected by a threaded cover plug.
- Recessed padlock hasps covered by a flush hinged lid.
- High security detention locks.

Consult factory for more information on panic hardware and other locking options.

Special Finishes Where specified, Bilco Model J, JD and Q doors and frames can be supplied with a hot-dip galvanized finish (ASTM A-123). All aluminum doors can be supplied with an anodized finish. Other custom finishes are available when specified.

Stainless Steel Hardware For installation in highly corrosive environments, all Bilco steel and aluminum doors are available with Type 316 stainless steel hardware throughout. Included are all parts of the latch and lifting mechanism assemblies; hold-open and guide arm and guides; and all brackets, hinges, pins and fasteners.

Other Options Bilco floor, vault and sidewalk doors may also be specified to include steel or aluminum grating, submersible pump guide rail brackets, metal enclosed insulation, slip-resistant coatings, drop-in installation modifications, handrails, panic hardware and snow and ice melting cables.

Sales Representatives

ALABAMA
Birmingham
Emack Slate Company, Inc.
(205) 879-3424 Fax: (205) 879-5420
E-mail: jim@emackslate.com
Web: www.emackslate.com

Mobile
Emack Slate Company, Inc.
(251) 895-0492 Fax: (251) 661-0492
E-mail: escmob@bellsouth.net
Web: www.emackslate.com

ALASKA
Door Specialties of Alaska, Inc.
(907) 563-5570 Fax: (907) 562-0351
E-mail: vance@doorspecialtiesofalaska.com

ARIZONA
Foster Engineered Products
(602) 265-0127 Fax: (602) 266-0455
E-mail: jen@fosterengineered.com

ARKANSAS
Worley Building Products, Inc.
(501) 224-6020 Fax: (501) 224-2663
E-mail: worleybdg@aol.com

CALIFORNIA
San Francisco
Collier Building Specialties
(415) 467-9235 Fax: (415) 468-4796
E-mail: sales@colliersf.com
Web: www.colliersf.com

Los Angeles
Specialty Bldg Components, Inc.
(562) 945-8951 Fax: (562) 696-1075
E-mail: sales@specialtybuilding.com
Web: www.specialtybuilding.com

San Diego
Specialty Bldg Components, Inc.
(619) 562-7762 Fax: (619) 562-8108
E-mail: sales@specialtybuilding.com
Web: www.specialtybuilding.com

COLORADO
Dalco Industries, Inc.
(303) 371-3950 Fax: (303) 373-0716
Web: www.dalcoindustries.com

CONNECTICUT
The Bill Fisher Enterprise
(860) 673-3261 Fax: (860) 673-4500
E-mail: bfe@bfeinc.us
Web: www.billfisherenterprise.com

DELAWARE
(See Philadelphia, PA)

DISTRICT OF COLUMBIA
(See Maryland)

FLORIDA
Fort Lauderdale
Fort Lauderdale
Builders Specialties Inc.
(800) 416-1053 Fax: (954) 731-8856
E-mail: contact@bbsales.com
Web: www.bbsales.com

Jacksonville
(Contact The Bilco Company)

Orlando-Tampa
Building Specialties, Inc.
(800) 746-5911 (941) 792-0050
Fax: (941) 792-7441
E-mail: buildingspecialties@verizon.net
Web: www.buildingspecialtiesinc.com

GEORGIA
Eastec Sales Company
(770) 831-6111 Fax: (770) 831-1017
E-mail: eastec@bellsouth.net

HAWAII
(Contact The Bilco Company)

ILLINOIS
Chicago
Illini Construction Specialties, Inc.
(630) 393-1919 Fax: (630) 393-1956
E-mail: danielea@illinispecialties.com
Web: www.illiniconstructionsspecialties.com

Peoria
Cook Industrial Sales
(309) 682-1600 Fax: (309) 682-1667

INDIANA
Evansville
Multi Products, Inc.
(812) 867-5263 Fax: (812) 867-2244

Indianapolis
Spohn Associates, Inc.
(317) 921-0021 Fax: (317) 921-2454
E-mail: spohnsales@oaktree.net

IOWA
McCoy & Associates, LLC
(515) 277-2800 Fax: (515) 277-1462
E-mail: mccoymc@msn.com

KANSAS
Kansas City / Wichita
DH Pace
(816) 480-2600 Fax: (816) 480-2658
E-mail: raynewcomer@dhpance.com

KENTUCKY
Bowling Green
(See Knoxville, TN)

Lexington - Louisville
(See Cincinnati, OH)

LOUISIANA
Alexandria
Flynn Building Specialties, Inc.
(318) 443-7346 Fax: (318) 473-4336
E-mail: johnflynn@bellsouth.net

Baton Rouge
(See New Orleans, LA)

Lafayette
Flynn Building Specialties, Inc.
(318) 234-7594
E-mail: kylelbs@bellsouth.net

New Orleans
Waldo Brothers, Inc.
(504) 834-8456 Fax: (504) 832-0125
E-mail: marykay@waldobrothers.com

Shreveport
Avallone Architectural Specialties
(318) 797-4331 Fax: (318) 797-4330
E-mail: info@avallone.net
Web: www.avallone.net

MAINE
(See Massachusetts - Eastern)

MARYLAND
CBG South, Inc.
(410) 995-6400 (301) 621-8699
Fax: (410) 381-0071
E-mail: sales@cbgsouth.com

MASSACHUSETTS
Eastern
Pace Representatives, Inc.
1-800-342-7072, (617) 342-7072
Fax: (617) 822-3470
E-mail: rcosmini@yahoo.com
Web: www.pacerepresentatives.com

Western
(See Connecticut)

MICHIGAN
Eastern
HMG, Inc.
(248) 888-9574 Fax: (248) 888-9587
E-mail: hmginc@aol.com

Western
Architectural Bldg Products, Inc.
(616) 878-4312 Fax: (616) 878-1880
E-mail: ddejonge@abp-michigan.com

MINNESOTA
Pierce Sales
(952) 942-9710 Fax: (952) 944-8750
E-mail: jpierce@piercesalesinc.net

MISSISSIPPI
(Contact The Bilco Company)

MISSOURI
Western
(See Kansas City, Kansas)

Eastern
Mays-Maune & Associates
(636) 349-1645 Fax: (636) 349-5005
E-mail: maysmaune@maysmaune.com
Web: www.mays-maune.com

MONTANA
Tri-Jack Design Products Co.
(406) 652-2555 Fax: (406) 652-4441
E-mail: info@trijack.com
Web: www.trijack.com

NEBRASKA
Emanuel C/S
(402) 342-2920 Fax: (402) 342-2154
E-mail: djc@emanuelcs.com

NEVADA
Las Vegas
(See Phoenix, AZ)

Reno
(See San Francisco, CA)

NEW HAMPSHIRE
(See Massachusetts - Eastern)

NEW JERSEY
Northern
(See New York City, NY)

Southern
(See Philadelphia, PA)

NEW MEXICO
Mountain West Sales, Inc.
(505) 888-4464 Fax: (505) 888-9498
E-mail: jim@mountainwestsales.net

NEW YORK
Albany
Colonie Construction Products, Inc.
(518) 785-4562 Fax: (518) 785-0686
E-mail: bobcpinc@yahoo.com

Buffalo/ Rochester
James F. Cleary, Inc.
(716) 649-5602 Fax: (716) 649-1290
E-mail: r.reagan@adelphia.net

New York City
Fontana Metal Sales Corp.
(631) 231-7030 Fax: (631) 231-7160
E-mail: info@fontanametalsales.com

Syracuse
R.L. Reid & Associates
(315) 234-0201
Fax: (315) 455-4902
E-mail: ralph@garace.com

Utica-Binghamton
(See Syracuse, NY)

NORTH CAROLINA
East Coast Metal Distributors
(336) 272-0757 (800) 632-4996
Fax: (336) 273-7953
E-mail: ngrantham@ecmdi.com

OHIO
Cincinnati
Welling Inc.
(513) 793-6900 Fax: (513) 793-6988
E-mail: kathleen@wellinginc.com
Web: wellinginc.com

Cleveland
E.P.I. of Cleveland, Inc.
(330) 468-2872 Fax: (330) 650-9805
E-mail: epiofcleveland@alltel.net

Columbus
Engineered Systems
(614) 430-0303 Fax: (614) 430-0404
E-mail: engineeredsys@aol.com

Dayton
(See Cincinnati, Ohio)

Toledo
(See Michigan - Eastern)

Youngstown
(See Columbus, Ohio)

OKLAHOMA
Oklahoma City
R & R Building Specialties, Inc.
(405) 681-6565 Fax: (405) 685-6177
E-mail: rrbsinc@aol.com

Tulsa
Murray Womble Inc.
(918) 272-6977 Fax: (918) 272-6122
E-mail: joeyaustin@murraywomble.com

OREGON
G.V.A. Inc.
(503) 233-8811 Fax: (503) 233-8876
E-mail: sales@gvanw.com

PENNSYLVANIA
Philadelphia-Harrisburg
Jopson Associates, LLC
(610) 825-0320 Fax: (610) 828-2806
E-mail: jopsonassoc@aol.com

Pittsburgh
V. O. George Corporation
(412) 367-0910 Fax: (412) 367-7026
E-mail: chris@vogeoorge.com

Seranton
Colman Sales Company
(570) 587-1188 Fax: (570) 587-4798
E-mail: jim@colmansales.com

RHODE ISLAND
(See Connecticut)

SOUTH CAROLINA
Building Specialties Sales Co.
(864) 244-2893 Fax: (864) 244-2894

TENNESSEE
Knoxville-Nashville
Masters & Sons Co., Inc.
(615) 662-6279 Fax: (615) 662-7976
E-mail: div7rep@comcast.net

Memphis
SB Group & Associates, Inc.
(901) 531-6144 Fax: (901) 531-6145
E-mail: sbga_usa@yahoo.com

TEXAS
Dallas
B & W Sales, Inc.
(972) 644-2393 Fax: (972) 644-2395
E-mail: bnwsalestx@aol.com

El Paso
(See New Mexico)

Houston
J. M. Maly Inc.
(281) 429-4600 Fax: (281) 429-4086
E-mail: bilcosales@jmmaly.com

Lubbock
Sterling Building Materials, Inc.
(806) 744-1383 Fax: (806) 795-3408
E-mail: john@sbmaterials.com
Web: www.sbmaterials.com

San Antonio
T. H. Willis Company, Inc.
(210) 820-3148 Fax: (210) 820-3132
E-mail: thwillis@swbell.net

UTAH
Cannon Sales, Inc.
(801) 299-0800 (800) 368-0542
Fax: (801) 299-9292
E-mail: brucepowell@cannonsales.com
Web: www.cannonsales.com

VERMONT
(See Massachusetts - Eastern)

VIRGINIA
Northern Virginia
(See Maryland)

Richmond/Norfolk/Roanoke
Marcor Associates, Inc.
(804) 794-0202 (800) 370-2452
Fax: (804) 379-1609
E-mail: marlau@comcast.net

WASHINGTON
Seattle
Anderson Specialties, LLC
(206) 368-9722 Fax: (206) 368-7790
E-mail: sales@anderson-specialties.com
Web: www.anderson-specialties.com

Spokane
(Contact The Bilco Company)

WEST VIRGINIA
Ferro Products Corporation
(304) 342-8111 Fax: (304) 342-8114
E-mail: gkelley@ferroproducts.com

WISCONSIN
Mitchell Pace + Associates
(262) 968-5141 Fax: (262) 968-5147
E-mail: sales@mitchellpace.com

CANADA
Bilco Canada
(519) 659-7331 Fax: (519) 455-8593
E-mail: michaelr@bilco.com

PUERTO RICO - U.S. Virgin Islands
(Contact The Bilco Company)

INTERNATIONAL SALES DEPT.
(Contact The Bilco Company)



The Bilco Company
P.O. Box 1203 • New Haven, CT 06505
(203) 934-6363 • Fax (203) 933-8478 • www.bilco.com • e-mail: bilco@bilco.com

Printed in the U.S.A.