

# Wabo®GutterFlex

Flexible Gutter and Drain Tube Assembly

Features	Benefits
<ul style="list-style-type: none"> <li>Fabric reinforced</li> </ul>	Minimizes material elongation.
<ul style="list-style-type: none"> <li>Neoprene rubber</li> </ul>	Excellent resistance to cleaning chemicals or other harsh environments.
<ul style="list-style-type: none"> <li>Versatile movement</li> </ul>	+/- 100% movement capability.
<ul style="list-style-type: none"> <li>Continuous membrane</li> </ul>	Collects and moves water away from expansion joint openings. Prevents moisture intrusion into lower levels.
<ul style="list-style-type: none"> <li>Versatile applications</li> </ul>	Blockout and underslab versions available.



## DESCRIPTION:

Wabo®GutterFlex is a flexible fabric reinforced neoprene gutter that satisfies the required movement criteria and compresses without damage during the full cycle of joint closure. The system collects and drains excess amounts of moisture through a drain tube that exhibits similar flexibility. The neoprene gutter is fabric reinforced to minimize material elongation due to the collection of excess moisture or debris. The under slab model provides a cost-effective solution for the remedial repair of failing systems. Either version can be used as a secondary back up to moisture protection on any expansion joint system in today's marketplace.

## RECOMMENDED FOR:

- New construction or rehabilitation where water tightness is needed.
- Any expansion joint system that requires secondary moisture protection.
- Extending service life of failing expansion joint systems.

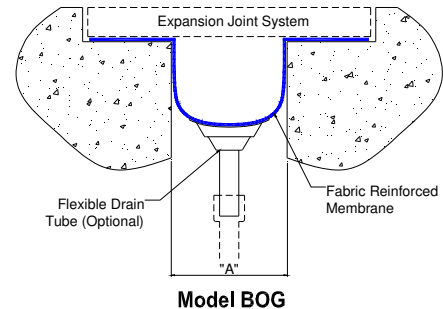
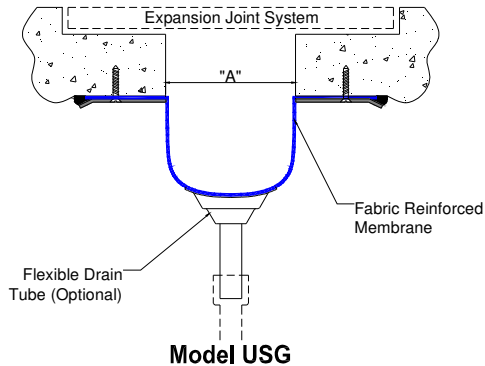
## PACKAGING/COVERAGE:

- Shipped in a carton on a pallet
- Aluminum mounting plate packaged on a wood pallet.

## TECHNICAL DATA:

### Design Information:

WaboGutterFlex is available in two different models, Underslab (model USG) and Blockout (model BOG) versions. Model USG is attached to the underside of the concrete slab by use of a metal retainer. Model BOG is held in place by an expansion joint anchored into a preformed blockout.



### Movement Table

Model Number	Joint Opening "A"						Membrane Width	
	Min.		Max.		Total		in	mm
	in	mm	in	mm	in	mm		
USG-12N	0.00	0	5.00	128	5.00	127	12.00	305
USG-18N	0.00	0	11.00	279	11.00	279	18.00	457
USG-24N	0.00	0	17.00	432	17.00	432	24.00	610
USG-30N	0.00	0	23.00	584	23.00	584	30.00	762
USG-36N	0.00	0	28.00	711	28.00	711	36.00	914
USG-42N	0.00	0	34.00	864	34.00	864	42.00	1067
USG-48N	0.00	0	41.00	1041	41.00	1041	48.00	1219
BOG-12N	1.00	25	5.00	127	4.00	102	12.00	305
BOG-18N	1.00	25	11.00	279	10.00	254	18.00	457
BOG-24N	1.00	25	17.00	432	16.00	406	24.00	610
BOG-30N	1.00	25	23.00	584	22.00	559	30.00	762
BOG-36N	1.00	25	28.00	711	27.00	686	36.00	914
BOG-42N	1.00	25	34.00	864	33.00	838	42.00	1067
BOG-48N	1.00	25	41.00	1041	40.00	1016	48.00	1219

### Physical Properties

PROPERTY	REQUIREMENTS
Fabric Type	4 ounce polyester cloth
Temperature Range	- 30° F + 200° F
Hardness Shore A	70 +/-5
Tensile, PSI	1000
Elongation, %	250
Tear, Die C, PPI	150



## APPLICATION

### Installation Summary:

- Measure and cut to exact length needed for continuous length, being careful not to pull or stretch the membrane.
- Spacing of drain tube assemblies should be approximately 25 feet center to center along length of joint opening or as specified.
- Prepare the gutter material on a flat surface and field attach the drain tube assembly by removing the protective tape. Using hand roller, apply direct pressure to flanges ensuring full contact and proper adhesion.
- Refer to WBA installation procedure for additional information.

### For Best Results:

- Install when concrete substrate is clean, sound, dry, and cured (14 day minimum).
- Do not install if the joint's anticipated movement will exceed the system's movement range.
- Minimize splice points by installing membrane in longest possible continuous lengths.
- Do not allow any of the components to freeze prior to installation. Store all components out of direct sunlight in a dry location between 50°F and 90°F.
- Periodically inspect the applied material and repair localized areas as needed. Consult a Watson Bowman Acme representative for additional information.
- Make certain the most current version of the product data sheet is being used. Please consult the website ([www.wbacorp.com](http://www.wbacorp.com)) or contact a customer service representative.
- Proper application is the responsibility of the user. Field visits by Watson Bowman Acme personnel are for the purpose of making technical recommendations only and not for supervising or providing quality control on the jobsite.

### Related Documents:

- Material Safety Data Sheets
- Wabo®GutterFlex Specification
- Wabo®GutterFlex Sales Drawings
- Wabo®GutterFlex Installation Procedure



**LIMITED WARRANTY:**

Watson Bowman Acme warrants that this product conforms to its current applicable specifications. WATSON BOWMAN ACME MAKES NO OTHER WARRANTY, EXPRESS OR IMPLIED, INCLUDING ANY WARRANTY OF MERCHANTABILITY OR WARRANTY OF FITNESS FOR A PARTICULAR PURPOSE. The sole and exclusive remedy of Purchaser for any claim concerning this product, including, but not limited to, claims alleging breach of warranty, negligence, strict liability or otherwise, is the replacement of product or refund of the purchase price, at the sole option of Watson Bowman Acme. Any claims concerning this product shall be submitted in writing within one year of the delivery date of this product to Purchaser and any claims not presented within that period are waived by Purchaser. IN NO EVENT SHALL WATSON BOWMAN ACME BE LIABLE FOR ANY SPECIAL, INCIDENTAL, CONSEQUENTIAL (INCLUDES LOSS OF PROFITS) OR PUNITIVE DAMAGES. Other warranties may be available when the product is installed by a factory trained installer. Contact your local Watson Bowman Acme representative for details. The data expressed herein is true and accurate to the best of our knowledge at the time published; it is, however, subject to change without notice.

**Contact**

*Watson Bowman Acme. 95 Pineview Drive, Amherst, NY 14228  
phone:716-691-7566 / fax: 716-691-9239 / web site: <http://www.wbcorp.com>*

**WaboGutterFlex\_1206**