

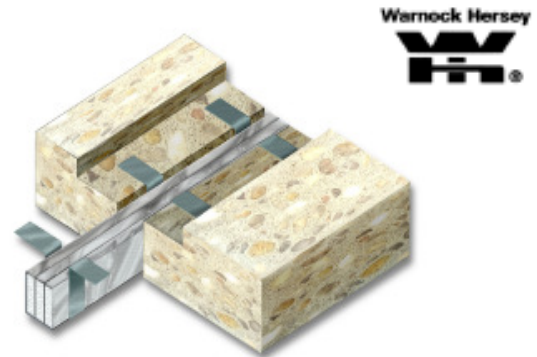
Wabo®ThermoShield

Fire Barrier Systems For Expansion Joints

Features	Benefits
<ul style="list-style-type: none"> • No caulks, sealants, or metal retainers 	Can be installed quickly with minimal labor effort
<ul style="list-style-type: none"> • Encapsulated batt material 	Resists moisture and passage of smoke
<ul style="list-style-type: none"> • Versatile 	Compatible with most WBA metallic or elastomeric joint systems
<ul style="list-style-type: none"> • Multi-directional movement 	Protects structures and building occupants against fire during various building movements

DESCRIPTION:

Wabo®ThermoShield is a fire barrier system with over 25 years of proven performance and industry acceptance. Tested and listed by Intertek Testing Services – Warnock Hersey, Wabo®ThermoShield is utilized where conventional expansion joint systems must be fire rated. Engineered for use in horizontal and vertical applications with ratings up to 4 hours, Wabo®ThermoShield primarily consists of installer friendly, high temperature, ceramic fiber batts encapsulated in a fabric reinforced aluminum scrim. The system is easily installed and does not require the use of anchors, sealants, or complex splice components or procedures for installation.



RECOMMENDED FOR:

- Horizontal and vertical joint openings up to 4 inches.
- For use in various construction projects including:
 - Health-care
 - Transportation
 - Recreation
 - Retail
 - Commercial
 - Educational
 - Parking Garage
 - Stadiums

PACKAGING/COVERAGE:

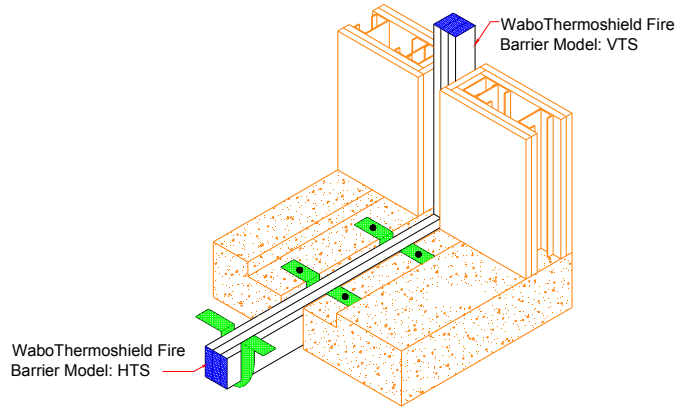
- High Temperature Batts: shipped in standard individual encapsulated rolls 25 Feet in length. Standard batt sizes 1/2"x5" and 1"x5".
- Accessories: all other materials packaged in manufacturer's standard labeled carton.



TECHNICAL DATA:

Design Information:

Wabo®ThermoShield meets the requirements of: ASTM E-119, NFPA-251, UBC 7-1, UL-263, CAN4-S101-M82. Model VTS is utilized for vertical applications. Model HTS is utilized for horizontal applications. For technical support in determining the specific model number, log onto WBA’s website and look for the WBA Fire Barrier Selector Guide, found in the technical support section (www.wbacorp.com) or contact WBA and speak with a customer service representative.



PHYSICAL PROPERTIES:

Fire Tape:

PHYSICAL PROPERTY	REQUIREMENT
Tensile Strength	6,000 lbs. (min.)
Elongation @ 2500 lbs.	20% max.
Breaking Strength (after bar Abrasion)	4800 lbs. (min.)
Flammability	Self-

Flexible Fire Batt:

PHYSICAL PROPERTY	REQUIREMENT
Density	8 pcf
Melting Point	3200°F
Service Limit	2300°F
Flame Spread (ASTM E-84)	0
Smoke Developed (ASTM E-84)	0
Color	White

Encapsulation Envelope:

PHYSICAL PROPERTY	ASTM TEST METHOD	REQUIREMENT
Thickness		8 mils.
Tensile Strength	C-1136	45 lbs/in width (MD) 45 lbs/in width (XD)
Reinforcing (Bi-directional fiberglass)		4/inch (MD) 4/inch (XD)
Puncture Resistance	C-1136	130 Beach Units
Bursting Strength	D-774	90 psi
Flame Spread	E-84	5
Smoke Developed	E-84	10



APPLICATION:

Installation Summary:

- Floor and wall construction and materials must be rated and designed to allow for proper installation of the fire barrier system.
- Inspect and verify all substrates to be solid and sound prior to start of work. Remove any loose materials and fix any areas in need of repair.
- Unpack individual rolls or lengths of fire barrier system. Assemble the specified number of layers, if required. Consult the installation procedure for details.
- Install the fire barrier system per installation procedure. Insure that the system is not damaged during installation.
- Field cut the fire barrier system to exact lengths and change in direction. Consult the installation procedure for butt splices or changes in direction.
- Fire barrier assembly shall be installed in the correct width of opening as called for in the contract plans. Variations in width shall be brought to the attention of the architect and product manufacturer prior to the installation of any material.
- Installation procedure can be downloaded from the WBA website (www.wbacorp.com) or can be requested directly from WBA.

Related Documents:

- Material Safety Data Sheets
- WaboThermoShield Specification
- WaboThermoShield Installation Procedure
- WaboThermoShield Sales Drawings

For Best Results:

- Thickness of substrates must properly accommodate size of expansion joint system plus the fire barrier system being utilized. Contact WBA for assistance in evaluating specific project needs.
- Construct openings consistent in width and straight along joint length.
- Construct openings free and clear of obstructions. Remove or relocate all conduits and other obstructions located inside opening that will affect proper installation of fire barrier system.
- Protect all fire barrier components from damage during storage, installation and post installation activities including placement of expansion control system.
- Do not use for applications exposed to weather or heavy moisture conditions without installation of a watertight expansion joint system.
- Do not allow any of the components to freeze prior to installation. Store all components out of direct sunlight in a clean, dry location between 50°F and 90°F.
- Periodically inspect the applied material and repair localized areas as needed. Consult a Watson Bowman Acme representative for additional information.
- Make certain the most current version of the product data sheet is being used. Please consult the website (www.wbacorp.com) or contact a customer service representative.
- Proper application is the responsibility of the user. Field visits by Watson Bowman Acme personnel are for the purpose of making technical recommendations only and not for supervising or providing quality control on the jobsite.



LIMITED WARRANTY:

Watson Bowman Acme Corp. warrants that this product conforms to its current applicable specifications. WATSON BOWMAN ACME CORP. MAKES NO OTHER WARRANTY, EXPRESS OR IMPLIED, INCLUDING ANY WARRANTY OF MERCHANTABILITY OR WARRANTY OF FITNESS FOR A PARTICULAR PURPOSE. The sole and exclusive remedy of Purchaser for any claim concerning this product, including, but not limited to, claims alleging breach of warranty, negligence, strict liability or otherwise, is the replacement of product or refund of the purchase price, at the sole option of Watson Bowman Acme Corp. Any claims concerning this product shall be submitted in writing within one year of the delivery date of this product to Purchaser and any claims not presented within that period are waived by Purchaser. IN NO EVENT SHALL WATSON BOWMAN ACME CORP. BE LIABLE FOR ANY SPECIAL, INCIDENTAL, CONSEQUENTIAL (INCLUDES LOSS OF PROFITS) OR PUNITIVE DAMAGES. Other warranties may be available when the product is installed by a factory trained installer. Contact your local Watson Bowman Acme representative for details. The data expressed herein is true and accurate to the best of our knowledge at the time published; it is, however, subject to change without notice.

Contact

*Watson Bowman Acme Corp. 95 Pineview Drive, Amherst, NY 14228
phone: 716-691-7566 / fax: 716-691-9239 / web site: <http://www.wbacorp.com>*

WaboThermoshield_1208