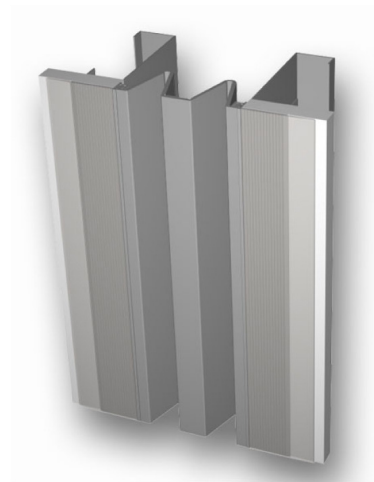


Wabo®FinishSeam

Wall, Soffit & Ceiling Expansion Joint

Features	Benefits
<ul style="list-style-type: none"> • Durable and time tested 	Low maintenance
<ul style="list-style-type: none"> • No visible fasteners 	Aesthetically attractive
<ul style="list-style-type: none"> • Surface mount system 	Surface mounts directly to edge of drywall with minimal components. Saves time and labor costs
<ul style="list-style-type: none"> • Colorable snap-lock seal 	Fast, simple installation
<ul style="list-style-type: none"> • Versatile 	Accommodates change in direction and adapts to a variety of site conditions.



DESCRIPTION:

Wabo®FinishSeam is an interior wall, soffit and ceiling expansion control system that accommodates both thermal and multidirectional seismic movement. The system is engineered for drywall applications and easily mounts directly to the edge of the wall opening utilizing minimal components and traditional drywall screws. Once mounted the aluminum extrusions simply receive drywall compound. Wabo®FinishSeam is available for openings of 1 through 6 inches. Attractive in design, the colorable elastomeric seals can easily accommodate changes in direction by heat welding or utilizing the manufacturer's user friendly adhesive.

RECOMMENDED FOR:

- All Interior wall, ceiling, and soffit expansion joint applications.
- For use in various construction projects including:
 - Health-Care
 - Transportation
 - Recreation
 - Retail
 - Commercial
 - Educational
 - Parking Garage (interior areas)

PACKAGING/COVERAGE:

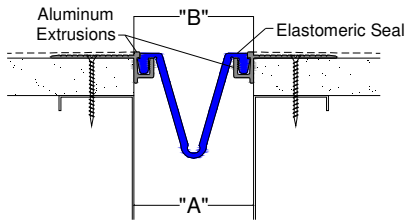
- Aluminum Profiles: bundled in standard 10-foot lengths.
- Elastomeric Seals: Shipped in longest practical continuous length.
- Accessories: In manufacturer's standard labeled carton.



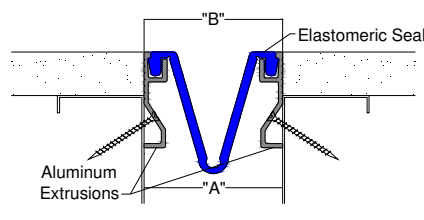
TECHNICAL DATA:

Design Information:

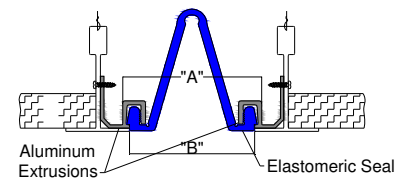
Wabo®FinishSeam is available in 3 models; Model FSC has been designed to accommodate typical ceiling applications, Model FSW has been designed to accommodate typical wall applications utilizing a front mounted base members and Model FSE for wall applications utilizing in-joint base members.



Model FSW



Model FSE



Model FSC

Note: All systems are illustrated with the WaboFinishSeam 200-300 elastomeric seal. See sales drawings for additional details

Movement Table

Model Number	JT. Opening "A"		System Width "B"		Total Movement	
	inches	mm	inches	mm	inches	mm
FSC, FSE, FSW						
100	1.0	25	1.0	25	0.5	13
200	2.0	51	2.0	51	2.0	51
300	3.0	76	3.0	76	3.0	76
400	4.0	102	4.0	102	4.0	102
500	5.0	127	5.0	127	5.0	127
600	6.0	152	6.0	152	6.0	152
100-C	1.0	25	1.0	25	0.5	13
200-C	2.0	51	2.0	51	2.0	51
300-C	3.0	76	3.0	76	3.0	76
400-C	4.0	102	4.0	102	4.0	102
500-C	5.0	127	5.0	127	5.0	127
600-C	6.0	152	6.0	152	6.0	152

PHYSICAL PROPERTIES

Metal Components: Extrusions shall be aluminum conforming to ASTM B221, alloy 6063-T5. Mill finish supplied.

Anchors: Drywall screws of sufficient length for gypsum wallboard construction. Supplied by installing contractor.

Elastomeric Seal: Material shall be extruded polyvinyl chloride (PVC) designed to mechanically lock into continuous channel of aluminum extrusion. Durometer: 60-70 Shore A hardness. Standard color: black. Other colors available.



APPLICATION:

Installation Summary:

- Protect all expansion joint components from damage during installation and protect finished installation from damage from other trades during all work activities.
- Expansion joint systems shall be installed in accordance with manufacturer's typical details and installation procedures.
- Wall, soffit, and ceiling construction and material shall be designed to allow for proper installation of system and its components. Construct any wall recess in accordance with manufacturer's recommendations.
- Construct all joint openings consistent in width and straight along joint height. Utilize double metal studs on both sides of the joint opening. Inspect and verify all substrates to be solid and sound prior to work.
- Construct all adjacent walls to be vertically flat along height and flush across both sides of the opening. Inspect and verify all substrates to be solid and sound prior to work.
- Install required gypsum wallboard inside joint opening at fire rated locations. Install appropriate fire barrier system, if required by building code and rated construction. Contact WBA for recommendations on appropriate fire barrier system.
- Metal components shall be cut to length on job site where required. Components shall be miter cut in the field to conform to directional changes unless otherwise contracted with the expansion joint manufacturer.
- All anchor holes shall be field drilled in accordance

Related Documents:

- Material Safety Data Sheets
- Wabo®FinishSeal Specification
- Wabo®FinishSeal Sales Drawings
- Wabo®FinishSeal Installation Procedure

For Best Results:

- Do not install if the joint's anticipated movement will exceed the system's movement range.
- Deliver product in each manufacturer's original, intact, labeled containers. Protect the work area with appropriate plastic sheeting.
- Minimize splice points by installing seals in longest possible continuous lengths.
- Do not allow any of the components to freeze prior to installation. Store all components out of direct sunlight in a clean, dry location between 50°F (10°C) and 90°F (32°C). Store off the ground and protect from weather and construction activities.
- Do not use for external locations, which require a watertight expansion joint system. Contact WBA for recommendations.
- Periodically inspect the applied material and repair localized areas as needed. Consult a Watson Bowman Acme representative for additional information.
- Make certain the most current version of the product data sheet is being used. Please consult the website (www.wbacorp.com) or contact a customer service representative.
- Proper application is the responsibility of the user. Field visits by Watson Bowman Acme personnel are for the purpose of making technical recommendations only and not for supervising or providing quality control on the jobsite.



LIMITED WARRANTY:

Watson Bowman Acme Corp. warrants that this product conforms to its current applicable specifications. WATSON BOWMAN ACME CORP. MAKES NO OTHER WARRANTY, EXPRESS OR IMPLIED, INCLUDING ANY WARRANTY OF MERCHANTABILITY OR WARRANTY OF FITNESS FOR A PARTICULAR PURPOSE. The sole and exclusive remedy of Purchaser for any claim concerning this product, including, but not limited to, claims alleging breach of warranty, negligence, strict liability or otherwise, is the replacement of product or refund of the purchase price, at the sole option of Watson Bowman Acme Corp. Any claims concerning this product shall be submitted in writing within one year of the delivery date of this product to Purchaser and any claims not presented within that period are waived by Purchaser. IN NO EVENT SHALL WATSON BOWMAN ACME CORP. BE LIABLE FOR ANY SPECIAL, INCIDENTAL, CONSEQUENTIAL (INCLUDES LOSS OF PROFITS) OR PUNITIVE DAMAGES. Other warranties may be available when the product is installed by a factory trained installer. Contact your local Watson Bowman Acme representative for details. The data expressed herein is true and accurate to the best of our knowledge at the time published; it is, however, subject to change without notice.

Contact

*Watson Bowman Acme Corp. 95 Pineview Drive, Amherst, NY 14228
phone: 716-691-7566 / fax: 716-691-9239 / web site: <http://www.wbacorp.com>*

WaboFinishSeam_1206