

Entrances & Framing



Entrances

Kawneer offers a comprehensive line of architectural aluminum building products and systems for commercial construction – entrances, framing systems, windows and curtain wall systems. For over a century, Kawneer has been recognized as an innovator. Since that time, we've balanced experience with change and ongoing improvement. We are dedicated to providing the tools our customers need to succeed. Welded door corners, patented thermal breaks, and design and fabrication flexibility are just a few examples of how we have responded to customer needs.

Hurricane Resistant Products

Kawneer offers single-source responsibility with a comprehensive group of independently tested, hurricane resistant products. Many have received Notices of Acceptance (NOAs) issued by Miami-Dade County BCCO and Florida State Approvals. Product testing continues. For more information, visit our website at Kawneer.com.

ADA Accessibility Guidelines

Kawneer entrances include options such as hardware, door controls and threshold heights that satisfy the guidelines of the Americans with Disabilities Act (ADA). Entrances are easily configured to meet ADA traffic control guidelines, and state and local building accessibility codes.

Kawneer's Limited Lifetime Welded Door Corner Warranty

Every door with Dual Moment welded corner joinery comes with a Limited Lifetime Warranty, including 190/350/500 Standard Entrances, 350 Heavy Wall™, 350/500 Tuffline®, Entara®, Flushline® and 260/360/560 Insuclad®. Warranty is good for the life of the door under normal use operation, is transferable from building owner to building owner and is in addition to the standard two-year warranty covering each Kawneer door.

190/350/500 Standard Entrances

A single-source, easily adaptable package of door, door frame and hardware

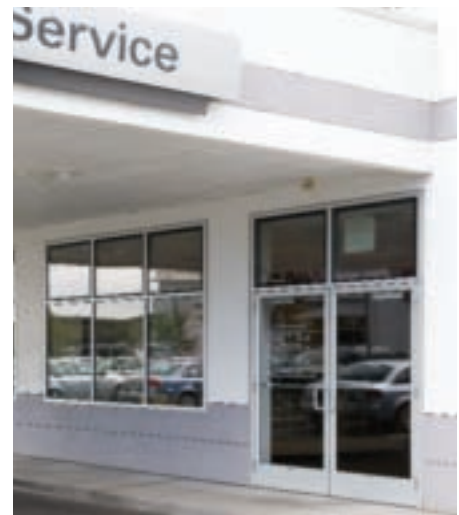
190/350 Entrances have been large missile hurricane impact/cycle tested and have been approved for use in Florida for both high-velocity hurricane zones and non-impact locations.

190 Narrow Stile – engineered for moderate traffic | Slim look 2-1/8" vertical stile, 2-1/4" top and 3-7/8" bottom rails

350 Medium Stile – provides extra strength for high traffic | Vertical stiles and top rail 3-1/2", bottom rail 6-1/2"

500 Wide Stile – monumental visual statements for heaviest traffic | Vertical stiles and top rail 5", bottom rail 6-1/2"

All three entrances feature Dual Moment welded corner construction with sigma deep penetration and fillet welds, plus corner mechanical fastenings | Door operation is single/double acting with maximum security locks or Touch Bar Panics standard | Architect's Classic 1" round bent bar push/pull hardware in various finishes and sizes | Infills range from 1/4" to 1" | Door frames feature Sealair® bulb polymeric weather stripping



190 Narrow Stile Entrance (with high bottom rail and Trifab® VG (VersaGlaze®) 451T Framing
Weeks Automotive/Danbury Audi,
Danbury Connecticut
Architect: Austin Patterson Disston Architects, LLC,
Southport, Connecticut
Glazing Contractor: Advanced Performance Glass,
Inc., South Windsor, Connecticut



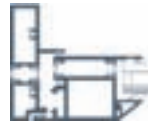
350 Medium Stile Entrance
DFW International Airport Terminal D, Dallas, Texas
Architect: HKS, Inc., in association with HNTB &
Corgan Associates, Inc., Dallas, Texas
Glazing Contractor: Win-Con Enterprises, Inc.,
New Braunfels, Texas



500 Wide Stile Entrance
DeSoto Civic Center, Southaven, Mississippi
Architect: Johnson Bailey Henderson McNeel
(JBHM) PA, Southaven, Mississippi
Glazing Contractor: American Glass Company Inc.,
Columbus, Mississippi



350 Heavy Wall™ Entrances
Kohl Center, University of Wisconsin,
Madison, Wisconsin
Architect: HOK Sport Facilities Group,
Kansas City, Missouri
Glazing Contractor: Lurie Glass Company,
Milwaukee, Wisconsin



2000T Terrace Door

Designed for use in condominiums, lofts,
apartments and hotels

Single or pair – outswing or inswing | 3-3/4" wide door
rails, 2-1/4" deep | Thermally broken door and frame |
Tested per NASF 1, ANSI/AAMA/NWDA 101/I.S.2-97
rated as HGD-C40/HC40 | Thermal tests per CAN/CSA
A-440-00, AAMA 1503-98 and NFRC 100-97 | Impact and
cycle tested | Stainless steel multi-point locks and options
| Lever handle options and finishes | True or applied
muntins and horizontals | Accommodates 1/4" to 1-1/8"
infills | Factory glazed | Kawneer standard and custom
finishes and colors | Two-color option



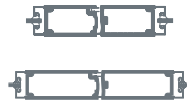
350 Heavy Wall™ Entrances

Designed for durability in heavy traffic areas

Medium Stile Door designed for high-traffic applications
such as schools, universities and office buildings | Door
and frame have 3/16" walls throughout for added durability
and strength | Door is 2" deep | Vertical stiles and top
rails 3-1/2" and bottom rail 6-1/2" | Accepts glazing infills
from 1/4" to 1" | Incorporates Kawneer's standard Dual
Moment welded corner | Blast tested per ASTM F1642



500 Tuffline® Entrances
Ford Field, Detroit, Michigan
Architect/Engineer of Record: SmithGroup,
Detroit, Michigan
Architects: Kaplan, McLaughlin, Diaz Architects, San
Francisco, California; Hamilton Anderson Associates,
Inc., Detroit, Michigan; Rossetti Associates
Architects, Birmingham, Michigan
Glazing Contractor: Universal Glass & Metals, Inc.,
Detroit, Michigan



350/500 Tuffline® Entrances

Heavy duty and engineered to withstand high traffic in
schools, universities, malls and supermarkets

Constructed for unequalled strength with 3/16" walls
throughout door and frame | 3-1/2" wide stiles and 3-3/8"
top rail on 350 door | 5" wide stiles and top rail on 500
door | 2" deep door sections and 6-3/4" bottom rail |
Door heights range from 7' to 9'; widths from 3' to 4' |
Door frame face width is 2", depth is 4-1/2" | Accepts
glazing infills of 1/4" to 1" | Complete package of door,
door frame and hardware | Kawneer's Dual Moment
welded corner construction resists both the lever arm and
torsion forces all doors experience



Entara® and Entara® XD Entrances

A complete package of door, frame and hardware
designed for high-abuse traffic areas and protection from
forced entry or vandalism

Three stile widths: 3", 4-1/2" and 6" | Basic door stiles and
rails for both entrances measure 2-1/4" in depth, with 3/16"
wall thickness for greater strength and rigidity | Entara®
frames are 1-3/4" x 4-1/2", with 1/4" thick side walls for
direct attachment of high-stress hardware | Entara® and
Entara® XD accept glazing infills from 1/4" to 1" | Center
pivot, offset pivot or butt hinges | Dual Moment welded
corner construction | Fully integrated frames are available
with or without transoms | Entara® offers multiple design
options | Entara® XD is a single-acting, outswing door and
frame designed for maximum protection from forced entry
and vandalism | The Kawneer Panic Guard® mechanism
is optional



Entara® Entrances
University of Alaska Museum of the North,
Fairbanks, Alaska
Architects: GDM Inc., Anchorage, Alaska;
Hammel, Green and Abrahamson, Inc. (HGA),
Minneapolis, Minnesota
Glazing Contractor: Commercial Contractors, Inc.,
Anchorage, Alaska

Flushline® Entrances

Single acting and providing durability with design flexibility for applications such as schools and manufacturing facilities

Offer a flush appearance with a face sheet of fiberglass-reinforced polyester (FRP) or aluminum in a variety of colors and captured on four sides by integral, extruded reglets | Heights range from less than 7' to a maximum of 12' | Widths vary from approximately 3' to 4' | Features Kawneer Dual Moment welded corner construction | Additional strength is achieved by the polyurethane foam core that interlocks with the aluminum and creates an extremely stable, durable entrance door | Paneline® Panic Device with minimal 1-1/8" projection is available | Door Bison Lites are available in aluminum or gasket frames with 1/4" or 1" infill

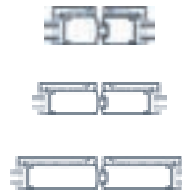


Flushline® Entrance
Converse Hall, James Madison University,
Harrisonburg, Virginia
Architect: Moseley Harris & McClintock,
Harrisonburg, Virginia
Glazing Contractor: Glass & Metals, Inc.,
Harrisonburg, Virginia

260/360/560 Insuclad® Thermal Entrances

Narrow, medium and wide stile, providing thermal efficiency for the entire building facade

Both the door and frame are thermally broken | Complete package of door, fully integrated door frame (with or without transoms) and integrated hardware | Stile face widths of 2-1/8", 3-1/2" and 5" | Door heights range from approximately 7' to 8' and widths from 3' to 3-1/2' | Dual Moment welded corner construction | Engineered for use with Kawneer's Trifab® VG 451T Framing Systems and 1600 Wall Systems® | Entrance is single acting and mounted on offset pivots, butt or continuous geared hinges | Accepts glazing infills of 1"



Paneline® and Paneline® EL Panic Device

The only clues that this is a panic device are the "push" indication and unlocking action

Paneline® Panic Devices have been large missile hurricane impact and cycle tested.

Pressure on the push panel quickly releases the door for emergency egress | Offers improved safety since Paneline® cannot be chained or blocked | Available with 190/350/500 Standard Aluminum Entrances, 350 Heavy Wall™, 350/500 Tuffline® and Flushline® Entrances | Can be used with the Panic Guard® retractable security astragal on 190/350/500 Standard Entrances | Optional matching dummy panels are available for vestibule doors and fixed panels area available for side lites | Available with electric option for access control



top to bottom:
EPT (Electric Power Transfer)
mounted to door in retrofit application;
Paneline® EL Concealed Rod Push Panel;
Paneline® EL Outside Control Switch

Panic Guard® Security Exit

The full-time emergency exit with 24-hour security

Patented Panic Guard® resists probing between meeting stiles by insertion of a full-length, movable astragal bar that locks into place to secure the entrance | Astragal bar retracts into the meeting stile to provide quick, safe egress | Available with 190/350/500 Standard Entrances, 350 Heavy Wall™, 350/500 Tuffline®, Entara® and Entara® XD Entrances



Panic Guard® Entrances
Panic Guard® resists entry through the "security gap" between pairs of doors. When closed, a retracting aluminum astragal bar at the meeting stiles interlocks for the full door height. In addition, a continuous threshold stop and blade stops at jambs and head reduce the possibility of inserting hook wires under or around the doors. Guarded lock cylinders provide added security.



990 Sliding Door
 The Grand America Hotel, Salt Lake City, Utah
 Architect: Smallwood, Reynolds, Stewart, Stewart & Associates, Inc., Atlanta, Georgia
 Glazing Contractor: Steel Encounters, Inc., Salt Lake City, Utah



HPS®

HPS® and HPX Monumental Sliding Doors **08 41 00/KAW**

High performance and designed to meet extreme conditions

BuyLine 2979

HPS® and HPX Sliding Doors have been hurricane impact and cycle tested.

HPS® Sliding Doors are available in four different performance ranges for low- and medium-rise applications | Tested for Performance Class and Grade of HC60, HC80, HC100 and HC120 | Small missile impact and cycle tested

HPX Sliding Doors are designed for high-rise coastal applications requiring greater wind load and superior water performance | Tested for a Performance Class and Grade of HC160 | Large and small missile impact and cycle tested



990 Sliding Door

Engineered for rain-battered high- and low-rise applications Features a stainless steel tandem-roller assembly to assure trouble-free, smooth operation and positive weather seals on all sides | The manual sliding 990 is a complete system of door, door frame and hardware, available in four configurations | Stile face width is 2-1/2" and the door accepts infills from 3/16" to 1" | Withstands water infiltration at 10 PSF and meets or exceeds all criteria established by AAMA for ratings of C30, HC40 and HC60



1010 Sliding Mall Front (modified)
 W Dallas Victory Hotel & Residence, Dallas, Texas
 Architect: HKS, Inc., Dallas Texas
 Customer: Win-Con Enterprises, Inc., New Braunfels, Texas



1010

Sliding Mall Fronts 1010/1010C, 1040, 1070

For single and multi-track interior and exterior applications Available with both fixed and operable panels

The **1010/1010C Sliding Mall Front** has a low-profile multi-track that can be recessed or surface applied | Interior applications only | Accepts infills from 1/4" to 1"

The **1040 Sliding Mall Front** is a single-track unit with three stacking options: parallel staggered, parallel even and 90 degree | Accepts 1/4" infills

The **1070 Sliding Mall Front** incorporates swing entrances on a single track with parallel stacking for heavy-duty interior or exterior use | When closed, the 1070 looks like a 1-3/4" x 4-1/2" flush glazed framing system | Accepts 1/4" infills

StadiaView®

Sports facility single hung windows for press boxes and stadium suites

Unobstructed views whether open or closed | Easy operation | Narrow sightlines | Single hung function | Optional infill thicknesses | Secure locking hardware



AA™3900 Thermal Sliding Door
 Glass House, Denver, Colorado
 Architect: The Preston Partnership, LLC, Atlanta, Georgia
 Glazing Contractor: El Paso Glass – Denver, Inc., Aurora, Colorado



AA™3900 Thermal Sliding Door

Styling that appeals, performance that delivers Improved thermal performance developed specifically for climates subject to temperature extremes | Contemporary styling and corrosion-resistant hardware | Provides ease of operation, plus safety and security for building occupants | Ideal for condominiums, apartments, hotels – anywhere comfort is paramount

Framing

Trifab® 400 Framing System

Proven solution for storefront and low-rise applications
1-3/4" x 4" frame members and accepts 1/8", 1/4" and 3/8" infills | May be flush glazed from the inside or outside | Choice of screw spline, shear block or stick fabrication

Trifab® VG (VersaGlaze®) 450, Trifab® VG 451 and Trifab® VG 451T Framing Systems

Built on the proven and successful Trifab® platform, Trifab® VG offers design versatility with unmatched fabrication flexibility

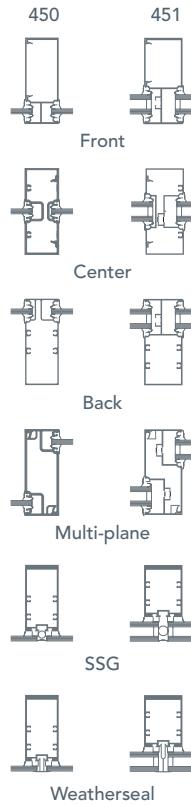
Trifab® VG 450: 1-3/4" x 4-1/2" frame members accept 1/8", 1/4" and 3/8" infills

Trifab® VG 451 & 451T: 2" x 4-1/2" frame members accept infills up to 1-1/8"

Choice of front, center, back or multi-plane glass applications | Choice of screw spline, shear block, stick or punched opening fabrication | Patented High Performance (HP) Flashing and HP Interlock Clip are engineered to eliminate the perimeter sill fasteners and their associated blind seals, and are compatible with all glass planes | Flush glazed from either the inside or outside | Front Stick fabrication option for Trifab® 451 and 451T adds two-color options in both captured and SSG/Weatherseal configurations | Weatherseal is not silicone, but an ABS/Geloy™ extrusion offering a consistent sightline of 15/16" at every glass joint | Weatherseal allows complete inside glazing with no scaffolding or swing stages to run typical exterior silicone weatherseal | Patented IsoLock® Thermal Break option (Trifab® VG 451T), which is designed to AAMA TIR-A8 and tested to AAMA 505 | U-factors, CRF values and STC ratings for Trifab® VG 451T vary, depending upon glass plane. Project-specific U-factors are easily calculated using technical charts (see Kawneer.com or Architectural Manual)

Storefront GLASSvent™ Visually Frameless Ventilator For use with all storefront systems

Eliminates added exterior sightline of typical ventilator when installed into a storefront framing system | Available as a Project-Out or Outswing Casement Window | Retrofit capability | Accepts 1/4" and 1" glazing infill | Factory glazing | Meets or exceeds performance standards of NAFS 1, ANSI/AAMA/NWDA 101/I.S.2-97 | For use with Trifab® 400, Trifab® VG 450, 451 and 451T center and front glazed, EnCORE® and Seamless Mullion™ 400T



Trifab® VG (VersaGlaze®) 451T (Thermal) Framing System, Captured and Weatherseal Mullions
Squires III, Pewaukee, Wisconsin
Architect: Zimmerman Design Group, Milwaukee, Wisconsin
Glazing Contractor: Klein Dickert Milwaukee, Inc., Pewaukee, Wisconsin



Trifab® VG (VersaGlaze®) 451T Front Glazed
INVESCO Corporate Building, Denver, Colorado
Architect: Gensler, Denver, Colorado
Glazing Contractor: Elward Construction Co., Lakewood, Colorado



Center Glazed Trifab® VG 451T (Thermal)
Talbots Corporate Headquarters,
Hingham, Massachusetts
Architect: Symmes Maini & McKee Associates, Cambridge, Massachusetts
Glazing Contractor: R & R Window Contractors, Inc., Easthampton, Massachusetts



EnCORE® Thermal Framing System
 Manitowoc Public Library, Manitowoc, Wisconsin
Architect: Engberg Anderson Design, Milwaukee, Wisconsin
Glazing Contractor: Sheboygan Glass Company, Inc., Sheboygan, Wisconsin



EnCORE® Thermal Framing System

The two-piece, face-and-gutter system that offers thermal economy with numerous design options

Offers a broad selection of system depths and a 1-3/4" sightline | Accepts 1/4" and 1" glazing infills and can be quickly adapted to accept other infills in 1/8" increments | Two-piece assembly easily accommodates two-color finish options and curved applications | Glazing plane can be to the exterior or centered in the mullion | Can be structural silicone glazed | Choice of screw spline, shear block or punched opening fabrication | Project-specific U-factors are easily calculated using technical charts (see Kawneer.com or Architectural Manual)

08 41 00/KAW

BuyLine 2979



IR 500/501 Framing System

A center glazed storefront framing system for hurricane impact/windborne debris requirements

2-1/2" x 5" frame members accepting 9/16", and 5/8" impact or 1/4" non-impact infills (IR500) | 2-3/4" x 5" frame members accepting 1-5/16" impact or 1" non-impact infills (IR 501) | Flush glazed from the outside, with an interior silicone seal | Screw spline fabrication | Choice of shop or field glazing | Hurricane impact and cycle tested | 350 IR singles or pairs of entrances available with 3-point lock, Touch Bar Panics or Paneline® Panics

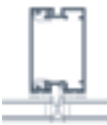


IR 500 Framing Systems
 Tarpon Springs Public Safety Building, Tarpon Springs, Florida
Architect: Gee & Jenson Engineers Architects Planners Inc., West Palm Beach, Florida
Glazing Contractor: Ashe Glass & Mirror, Temple Terrace, Florida

PG 123®

Ribbon window and multi-lite punched opening system with pre-glaze capability

2-1/4" x 6" frame members accept 1" infill with 1/4" adaptors for spandrel applications | Screw spline joinery | Square cuts with no miters or notching, reduces fab time | Can be pre-assembled and pre-glazed under controlled shop conditions, saving time compared to field construction | Pre-glaze units installed from interior, minimizes weather delays and scaffolds/lift equipment | ISOWEB® glass reinforced nylon thermal break provides improved condensation resistance, reduces thermal transmittance and offers dual finish options, allowing different interior and exterior color finishes | Tested to appropriate AAMA, ASTM and CAN/CSA A-440 standards for air, water and structural performance



Trifab® VG (VersaGlaze®) Multi-Plane, Front and Rear Glazed
 Brighton Landing, Brighton, Massachusetts
Architect: ADD Inc., Cambridge, Massachusetts
Glazing Contractor: Ipswich Bay Glass Company, Inc., Rowley, Massachusetts

Kawneer Finishes

Permanodic® Anodized Finishes

Long-lasting, protective coatings resist abrasion, corrosion, UV rays
Available in Class I and Class II in seven different choices: Clear Anodized Class I (#14 Clear); Clear Anodized Class II (#17 Clear); Color Anodized Class I (#40 Dark Bronze, #29 Black, #28 Medium Bronze, #26 Light Bronze and #18 Champagne) | All Kawneer Permanodic® Finishes meet AAMA 611

Painted Finishes

Fluoropolymer Coatings – Enduring color with high performance and durability
Available in many standard choices and unlimited custom colors | These include Fluropon®* and Permadize® finishes, which meet or exceed AAMA 2604 or AAMA 2605

Powder Coatings – Create a “green” element with solvent-free high performance, durability and scratch resistance

Available in 31 standard colors | Interpon®** D2000 Advance Powder Coatings, which meet or exceed AAMA 2604 or 2605

* Fluropon is a registered trademark of The Valspar Corporation

** Interpon is a registered trademark of Akzo Nobel

Notice

Laws and Building and Safety Codes governing the design and use of windows, glazed entrance, framing, curtain wall and overhead glazing products vary widely. Kawneer does not control the selection of product configuration, operating hardware or glazing materials, and assumes no responsibility thereof.

Information contained in this catalog is subject to change without notice.

Kawneer Original Designs and Structures are fully protected by U.S. Patents and Patents Pending.

Other Products from Kawneer

Curtain Wall & Overhead Glazing 08 44 00/KAW; Windows 08 51 00/KAW in Sweet's.

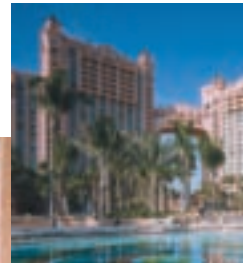
For More Information

Visit our website at Kawneer.com for more detailed information, including the most current CAD libraries and Guide Specifications.



500 Wide Stile Entrance Enclosed by 1070 Sliding Mall Front

Park Meadows, Denver, Colorado
Architect: Anthony Belluschi Architects, Chicago, Illinois
Glazing Contractor: A1 Glass, Inc., Englewood, Colorado



HPS® Sliding Doors

Atlantis Casino & Resort, Paradise Island (Nassau), Bahamas
Architect: HKS, Inc., Dallas, Texas
Glazing Contractor: Commonwealth Building Supply Ltd., Nassau, Bahamas

Cover photo:

500 Tuffline® Entrances

Fossil Ridge High School, Poudre School District, Ft. Collins, Colorado
Architect: RB + B Architects, Inc., Ft. Collins, Colorado
Glazing Contractor: B & W Glass, Inc., Cheyenne, Wyoming

Kawneer Company, Inc.
Technology Park / Atlanta
555 Guthridge Court
Norcross, GA 30092

kawneer.com
770 . 449 . 5555

 **KAWNEER**
AN ALCOA COMPANY