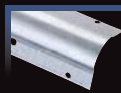


PHILLIPS

MANUFACTURING CO.

Engineered to Perform



METAL BEADS & TRIMS



VINYL BEADS & TRIMS



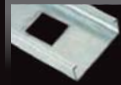
PAPER FACED FLEXIBLE CORNER TRIM



PAPER FACED BEADS & TRIMS



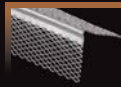
METAL CHANNELS & INTERIOR FRAMING



STRUCTURAL FRAMING



I-STUDS & FIRE RATED ASSEMBLIES



STUCCO, VENEER & PLASTER BEADS & TRIMS



METAL LATH



ROOFING METALS



PHILLIPSMFG.COM
800.822.5055

MANUFACTURING CO. **Engineered to Perform**

- About Us -

Phillips Manufacturing Co. is a national single source manufacturer for all drywall finishing accessories including beads, trims, channels and framing components, as well as stucco accessories and roofing metals. We stand above the competition as specialists in beads, trims and accessories focusing on continual quality improvements and innovations providing the highest quality products. We are a privately owned and operated company proudly serving the entire nation with our extensive product line through our many distribution channels.

- Our Mission -

"Lead the industry in delivering innovative products and services that add value to our customers and build their long-term success."

- Our Guarantee -

Phillips stands behind our product quality 100%. Our material and fabrication standards are the highest in the industry. Phillips products are manufactured by an organization devoted to customer satisfaction.



Headquarters and Plant / Omaha, Nebraska

THE PHILLIPS ADVANTAGE

- » **Innovation and Quality:** Phillips engineering, research and development, and production teams are driven towards value added products and services.
- » **Product Value:** Phillips delivers innovative products with distinct features and benefits at competitive prices for a strong competitive advantage.
- » **Service:** Phillips employs highly qualified and knowledgeable sales and sales support teams to ensure excellent customer service. We provide efficient national distribution with manufacturing and operating space in excess of 400,000 square feet.
- » **Relationships:** We understand the importance of the customer and recognize that success is achieved through partnerships and loyalty.
- » **Brand Loyalty:** Our national presence and well-recognized Phillips brand names are known throughout the industry.



Office and Plant / Niles, Ohio



Distribution Warehouse / Phoenix, Arizona



Manufacturing Plant / Tampa, Florida



- **Maintaining Excellence** -

Phillips products are manufactured by the most highly developed processes available, using in-house expertise as our most valuable resource.

Our experienced technicians and engineers are engaged in continuous analysis of our manufacturing and quality control processes to ensure maximum quality standards. The feedback received from our customers is of immeasurable value in this on-going effort.

Customer service is an important reason why customers call on us time and time again to meet the needs of their construction project. We respond quickly and effectively to our customers' requests, regardless of the nature.





- NEW PRODUCTS -

Mudable Metal L-Trim
New Sizes: 1/4", 3/4" & 1"
pg. 11



Paper Faced Flexible Corner Trim
New Size: 2-3/4"
pg. 22



ViperStud® & ViperTrack®
Drywall Framing System
pg. 34

#7 Foundation Weep Screed
New Size: 1/2" ground
pg. 46

#66 Short Flange Square Casing
New Size: 5/8" ground
pg. 41, 48



Gutter Apron
New Sizes: 1-1/2" x 3" or 4"
pg. 49

Roof Edge
New Sizes: 1-1/2" x 3" or 4"
pg. 49

Z-Flashing
pg. 51

Gravel Stop
pg. 51

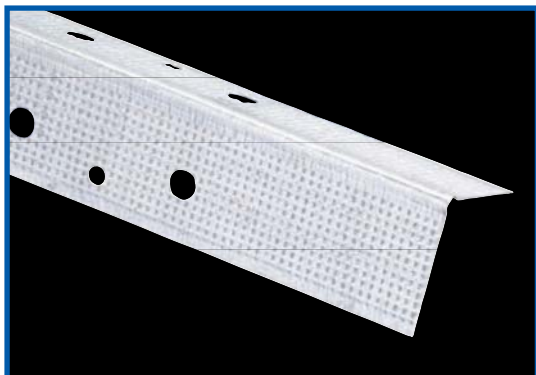
Table of Contents

Metal Beads & Trims	6
Metal Corner Beads.....	6
Metal Trims and Finishing Products	11
Vinyl Beads & Trims	13
Vinyl Corner Beads.....	13
Bullnose Corner and Transition Caps	18
Vinyl Trims and Finishing Products.....	20
Paper Faced Flexible Corner Trim	22
Paper Faced Beads & Trims	23
Paper Faced Corner Beads.....	23
Paper Faced Trims.....	30
Metal Channels & Interior Framing	31
Channels.....	31
Drywall Metal Framing.....	34
Flat Strap or Flat Stock.....	36
Structural Framing	37
Structural Studs and Tracks.....	37
Structural Accessories	38
I-Studs & Fire Rated Assemblies	39
Shaftwall/Stairwell	39
Area Separation Wall	40
Stucco, Veneer & Plaster Beads & Trims	41
Stucco and Plaster Casing Beads.....	41
Stucco and Plaster Control Joints.....	42
Veneer Beads and Trims	44
Stucco Screeds and Exterior Finishing Products	46
Metal Lath	47
Metal Lath Accessories.....	48
Roofing Metals	49
Index	52
ASTM Specifications	54
LEED® Certification	55

The ViperStud® Logo, "ViperStud®", "ViperTrack®", and "ViperRib®" are registered trademarks of Ware Industries Inc. and are used by Phillips Manufacturing Co. under license from Ware Industries Inc.

METAL CORNER BEADS

PHILLIPS UNMATCHED SELECTION OF CORNER BEAD



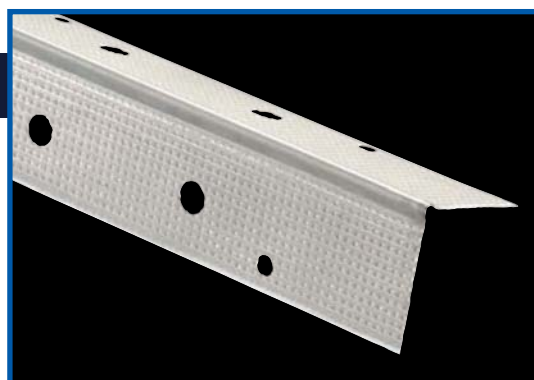
PART NUMBER: CBRHDG

Everlast® CORNER BEAD

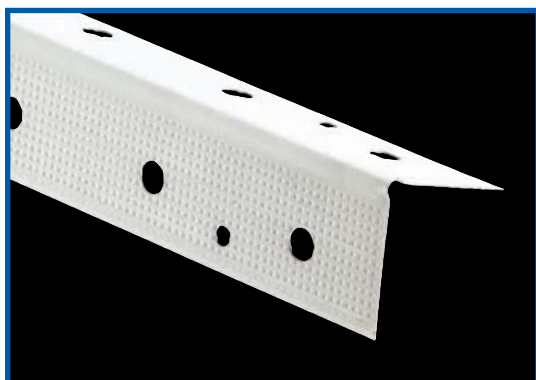
Phillips performance proven Everlast® corner bead features a hot-dipped galvanized steel surface coating providing excellent rust protection. The surface of Phillips exclusive Everlast® corner bead is etched to ensure quality mud adhesion. Phillips corner beads are easily installed using standard industry practice with drywall nails, staples, screws or clinching tool. Phillips corner beads also feature deeply knurled mud anchors to further ensure perfect mud adhesion.

klinchSTIK®

Phillips is the exclusive producer of klinchSTIK® metal bead. This corner bead features a grey galvanized surface coating and deeply knurled mud anchors for perfect mud adhesion. Phillips corner beads are easily installed using standard industry practice with drywall nails, staples, screws or clinching tool. Phillips klinchSTIK® is the ideal product for quick and easy installation with a clinching tool.



PART NUMBER: CBKEGB



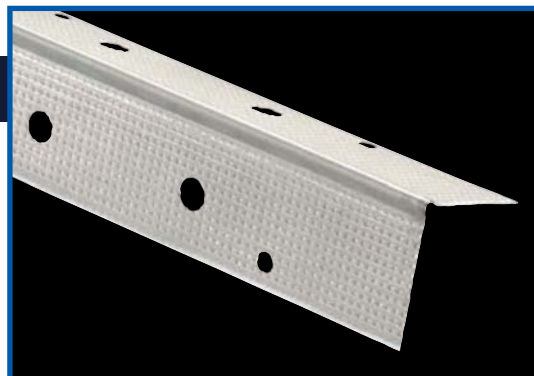
PART NUMBER: CBRSF

ShadowFree® CORNER BEAD

Phillips ShadowFree® corner bead is the perfect color and texture for a superior finish. This product features a hot-dipped galvanized steel surface coating plus is primed for excellent corrosion prevention and to ensure quality mud and paint adhesion. Phillips exclusive ShadowFree® surface coating helps prevent shadowing and cuts down on finishing time.

FIRST CHOICE CORNER BEAD

Phillips is the exclusive producer of First Choice corner bead. For those who prefer it, this classic product features a grey galvanized surface coating to ensure consistent, high-quality finishing every time. Like all Phillips corner beads, this bead features deeply knurled mud anchors to further ensure perfect mud adhesion.



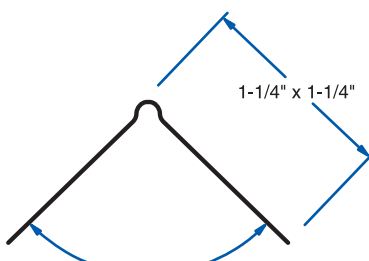
PART NUMBER: CBREGB

SIZES AND PACKAGING

Corner Bead

Length	Pieces Per Carton	Cartons Per Pallet	Feet Per Carton
7'	72	48	504
8'	63	48	504
9'	56	48	504
10'	50	48	500
12'	42	48	504

UPC labeling available upon request



For 90° Angles

Drawing not to scale

"Engineered to Perform"

Phillips Metal Beads and Trims:

- » Strong, dent resistant corner and edge reinforcements
- » Durable, economical and straighter corners
- » Deeply knurled mud anchors on flanges



PART NUMBER: CBSHDG

Everlast® SPLAY CORNER BEAD

Phillips Everlast® splay corner bead creates a time-saving, smooth, consistent finish for open angles exceeding 120°. Everlast® splay features Phillips exclusive hot-dipped galvanized surface coating which provides excellent rust protection. The surface of this corner bead is etched to ensure quality mud adhesion. Install using standard industry practice with nails, staples, or screws and finish with joint compound for a high-quality professional finish. Like all Phillips corner beads, this bead features deeply knurled mud anchors to further ensure perfect mud adhesion.



PART NUMBER: CBSSF

ShadowFree® SPLAY

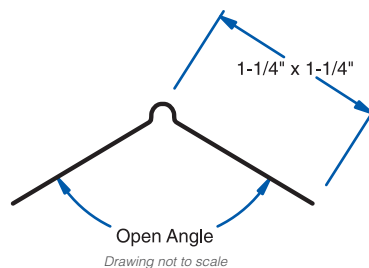
Phillips ShadowFree® splay corner bead is the perfect color and texture for a superior finish on open angles exceeding 120°. This product is primed over a hot-dipped galvanized steel surface coating for excellent corrosion prevention and to ensure quality mud and paint adhesion. Phillips exclusive ShadowFree® surface coating helps prevent shadowing and cuts down on finishing time.



PART NUMBER: CBSEGB

FIRST CHOICE SPLAY

Phillips is the exclusive producer of First Choice splay corner bead. This product is designed for open angles exceeding 120°. For those who prefer it, this classic product features a grey galvanized surface coating to ensure consistent, high-quality finishing every time. Like all Phillips corner beads, this product features deeply knurled mud anchors for perfect mud adhesion.



SIZES AND PACKAGING

Splay Corner Bead

Length	Pieces Per Carton	Cartons Per Pallet	Feet Per Carton
8'	63	48	504
9'	56	48	504
10'	50	48	500

UPC labeling available upon request

Phillips Metal Beads & Trims work great with our extensive line of Corner & Transition Caps. See pages 18-19 for more details.



BULLNOSE METAL CORNER BEADS



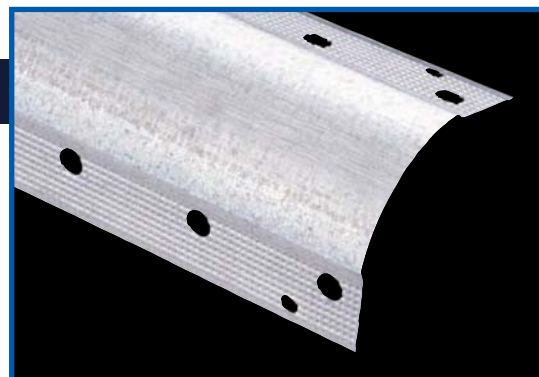
PART NUMBER: BN3HDG

3/4" Everlast® BULLNOSE

Phillips performance proven Everlast® 3/4" bullnose corner bead is used for a smooth, rounded finish on exposed edges of wallboard. Bullnose corner beads are a great way to finish off a room elegantly. This product provides superior corrosion protection and mud adhesion. This corner bead features a hot-dipped galvanized surface coating which provides the finest rust protection. The surface of Phillips exclusive Everlast® bullnose corner bead is etched to ensure quality mud adhesion. Flanges feature deeply knurled mud anchors to further ensure perfect mud adhesion. Phillips corner beads are easily installed using standard industry practice with drywall nails, staples, screws or clinching tool.

1-1/2" Everlast® BULLNOSE

Phillips performance proven Everlast® 1-1/2" bullnose corner bead provides a more pronounced round corner creating a modern look at exposed edges of wallboard. This product also provides superior corrosion protection and mud adhesion. Phillips Everlast® products feature a hot-dipped galvanized surface coating which provides the finest rust protection. The surface of Phillips exclusive Everlast® corner bead is etched to ensure quality mud and paint adhesion. Easily install using standard industry practice with drywall nails, staples, screws or clinching tool. The flanges of Phillips bullnose corner beads feature deeply knurled mud anchors to further ensure perfect mud adhesion.



PART NUMBER: BN5HDG



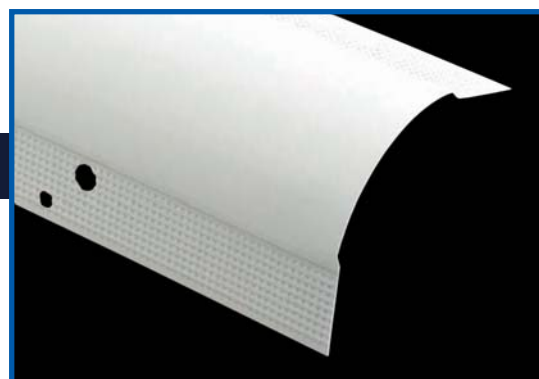
PART NUMBER: BN3SF

3/4" ShadowFree® BULLNOSE

Expand your market with the perfect color and texture for a superior finish. This product is primed over a hot-dipped galvanized steel surface coating for excellent corrosion prevention and to ensure quality mud and paint adhesion. Phillips exclusive ShadowFree® surface coating prevents shadowing and cuts down on finishing time. Phillips 3/4" bullnose corner beads provide a smooth, rounded finish on exposed edges of wallboard finishing off a room elegantly.

1-1/2" ShadowFree® BULLNOSE

Expand your market with the perfect color and texture for a superior finish. This product is primed over a hot-dipped galvanized steel surface coating for excellent corrosion prevention and to ensure quality mud and paint adhesion. Phillips exclusive ShadowFree® surface coating prevents shadowing and cuts down on finishing time. Phillips 1-1/2" bullnose corner beads provide a more pronounced round corner creating a modern look.



PART NUMBER: BN5SF

SIZES AND PACKAGING

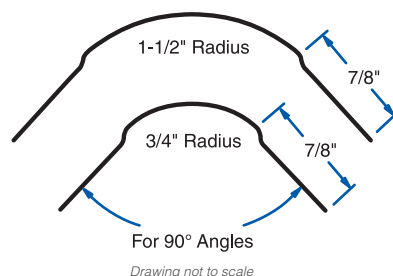
3/4" Bullnose

Length	Pieces Per Carton	Cartons Per Pallet	Feet Per Carton
7'	58	49	406
8'	50	64	400
9'	45	63	405
10'	40	60	400
12'	33	40	396

1-1/2" Bullnose

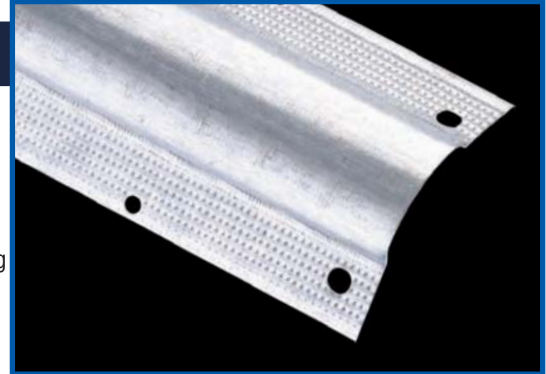
10'	20	40	200
-----	----	----	-----

UPC labeling available upon request

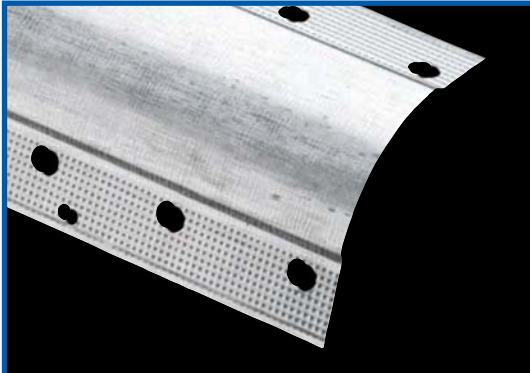


3/4" Everlast® BULLNOSE SPLAY

Phillips performance proven Everlast® 3/4" bullnose splay corner bead is used for a smooth, rounded finish on angles exceeding 120°. Bullnose splay corner beads are a great way to finish off a room elegantly. Phillips Everlast® products feature a hot-dipped galvanized surface coating which provides the finest rust protection. The surface of Phillips exclusive Everlast® bullnose splay corner bead is etched to ensure quality mud and paint adhesion. Easily install using standard industry practice with drywall nails, staples, screws or clinching tool. The flanges of Phillips bullnose corner beads feature deeply knurled mud anchors to further ensure perfect mud adhesion.



PART NUMBER: BS3HDG



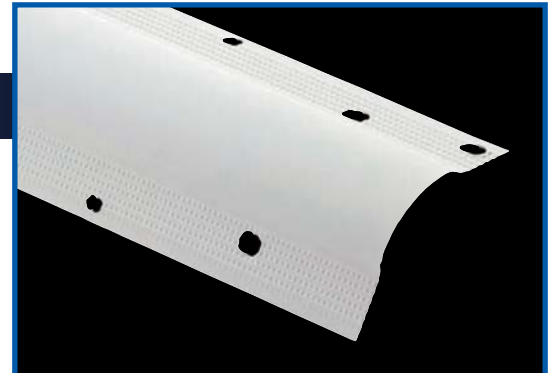
PART NUMBER: BS5HDG

1-1/2" Everlast® BULLNOSE SPLAY

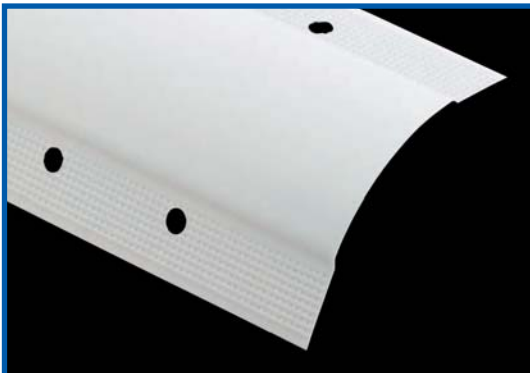
Phillips performance proven Everlast® 1-1/2" bullnose splay corner bead provides a more pronounced round corner creating a modern look on angles exceeding 120° with its larger bullnose radius. This product also provides superior corrosion protection and mud adhesion. This corner bead features a hot-dipped galvanized surface coating which provides the finest rust protection. The surface of Phillips exclusive Everlast® corner bead is etched to ensure quality mud and paint adhesion. Easily install using standard industry practice with drywall nails, staples, screws or clinching tool. The flanges of Phillips bullnose corner beads feature deeply knurled mud anchors to further ensure perfect mud adhesion.

3/4" ShadowFree® BULLNOSE SPLAY

Phillips 3/4" ShadowFree® bullnose splay corner bead is the perfect color and texture for a superior finish on angles exceeding 120°. This product is primed over a hot-dipped galvanized steel surface coating for excellent corrosion prevention and to ensure quality mud and paint adhesion. Phillips exclusive ShadowFree® surface coating prevents shadowing and cuts down on finishing time.



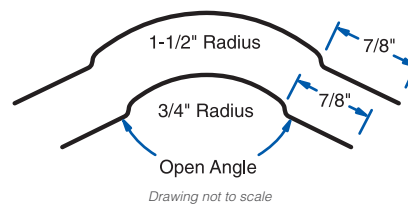
PART NUMBER: BS3SF



PART NUMBER: BS5SF

1-1/2" ShadowFree® BULLNOSE SPLAY

Phillips 1-1/2" ShadowFree® bullnose splay is the perfect color and texture for a superior finish on angles exceeding 120°. The larger bullnose radius provides a more pronounced corner creating a more modern look. This product is primed over a hot-dipped galvanized steel surface coating for excellent corrosion prevention and to ensure quality mud and paint adhesion. Phillips exclusive ShadowFree® surface coating prevents shadowing and cuts down on finishing time.



SIZES AND PACKAGING

3/4" Bullnose Splay

Length	Pieces Per Carton	Cartons Per Pallet	Feet Per Carton
7'	58	40	406
8'	50	40	400
9'	45	40	405
10'	40	40	400
12'	33	40	396

1-1/2" Bullnose Splay

10'	20	40	200
-----	----	----	-----

UPC labeling available upon request

Phillips Metal Beads & Trims work great with our extensive line of Corner & Transition Caps. See pages 18-19 for more details.



BULLNOSE METAL CORNER BEADS



3/4" Bullnose Kerf

PART NUMBER: BK3HDG

3/4" & 1-1/2" BULLNOSE KERF

Phillips Bullnose Kerf metal has a unique shortened back flange allowing for insertion into grooved door jambs and window trims. This product is always a great fit and provides the smooth, round appearance associated with bullnose trims. This easy-to-install product is considered by many an excellent alternative to Bullnose J-Round. Bullnose Kerf is available in both 3/4" (BK3HDG) radius and 1-1/2" (BK5HDG) radius. The 1-1/2" provides an even rounder appearance adding a modern look to rooms. Phillips also offers Bullnose Kerf metals with ShadowFree® surface coatings (BK3SF, BK5SF); ask your sales representative for more information.

SIZES AND PACKAGING

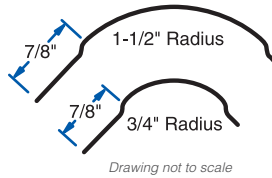
3/4" Bullnose Kerf Metal

Length	Pieces Per Carton	Cartons Per Pallet	Feet Per Carton
7'	58	40	406
8'	50	40	400
9'	45	40	405
10'	40	40	400

1-1/2" Bullnose Kerf Metal

Length	Pieces Per Carton	Cartons Per Pallet	Feet Per Carton
7'	28	40	196
8'	24	40	192
9'	22	40	198
10'	20	40	200

UPC labeling available upon request

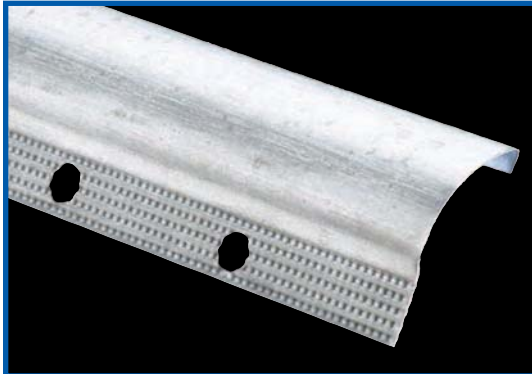


Drawing not to scale



1-1/2" Bullnose Kerf

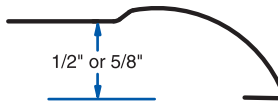
PART NUMBER: BK5HDG



PART NUMBER: SEE TEXT

BULLNOSE J-ROUND

Phillips Bullnose J-Round is an easily installed corner bead ideal for providing a rounded edge around door and window jambs. This product is perfect to use with non-kerfed door jambs. The Bullnose J-Round has a shortened back flange that comes in handy if encasing the drywall is not desired or not available. This perfectly complementing corner bead is used by many as a trim. Bullnose J-Round has a 3/4" radius and is available in both 1/2" (BJ5HDG) and 5/8" (BJ6HDG) widths. Phillips also offers this product with ShadowFree® surface coating.



Drawing not to scale

SIZES AND PACKAGING

Bullnose J-Round

Length	Pieces Per Carton	Cartons Per Pallet	Feet Per Carton
7'	30	40	210
8'	30	40	240
9'	30	40	270
10'	30	40	300

UPC labeling available upon request

BULLNOSE DOOR & WINDOW

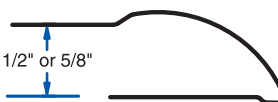
Phillips Bullnose Door & Window provides a strong metal reinforcement at doors and windows and is used by many as a trim. This easy-to-install corner bead provides a rounded edge at drywall terminations. This product has a 3/4" radius, and is available in both 1/2" (BD5HDG) and 5/8" (BD6HDG) widths. Phillips also offers this product with ShadowFree® surface coating.

SIZES AND PACKAGING

Bullnose Door & Window

Length	Pieces Per Carton	Cartons Per Pallet	Feet Per Carton
7'	20	40	140
8'	20	40	160
9'	20	40	180
10'	20	40	200

UPC labeling available upon request



Drawing not to scale



PART NUMBER: SEE TEXT

Hot-Dipped Galvanized Finishing Process

Phillips Everlast® hot-dipped galvanized finishing process is one of a kind in which Phillips **GUARANTEES** superior performance when installed properly.

Phillips Manufacturing's 3-step Everlast® hot-dipped galvanized finishing process provides the finest rust protection and mud adhesion.

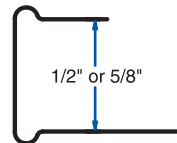
- Step 1: Steel is processed to remove any foreign substances.
- Step 2: Steel surfaces are etched to ensure superior mud bonding.
- Step 3: Steel goes through a final adhesion prep process.



PART NUMBER: SEE TEXT

U-200 TRIM

Phillips U-200 trim is a sturdy, channel-type steel casing product and a mudable trim. This product provides maximum protection and a professionally finished wallboard edge at window and door jambs. Phillips U-200 trim can also be applied where wallboard abuts different surfaces such as suspended ceilings, plaster, beams, masonry and concrete. This product is easily installed to the framing or jamb using standard industry practice. Installation is complete with application of joint compound to the front side for a smooth, ready-to-paint surface. Available in both 1/2" (UT5) and 5/8" (UT6) as well as in hot-dipped galvanized, zinc bond or ShadowFree® surface coating.



Drawing not to scale

SIZES AND PACKAGING

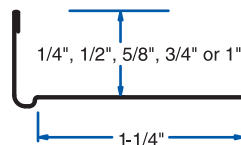
U-200 Trim (1/2" & 5/8")

Length	Pieces Per Carton	Cartons Per Pallet	Feet Per Carton
8'	63	48	504
10'	50	49	500

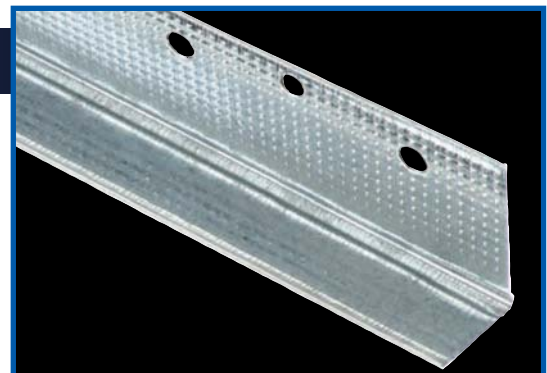
UPC labeling available upon request

L-200 TRIM

Phillips L-200 trim is a sturdy, steel casing product and a mudable trim. This product provides maximum protection and a professionally finished wallboard edge at window and door jambs. L-200 trim can also be applied where wallboard abuts different surfaces such as suspended ceilings, plaster, beams, masonry and concrete. This product is easily installed to the framing or jamb using standard industry practice. Some consider the L-200 easier to install because the back flange is eliminated. Installation is complete with application of joint compound to the front side for a smooth, ready-to-paint surface. Phillips offers the L-200 in 1/4" (LT2), 1/2" (LT5), 5/8" (LT6), 3/4" (LT7) and 1" (LT1). Available in hot-dipped galvanized, zinc bond or ShadowFree® surface coating.



Drawing not to scale



PART NUMBER: SEE TEXT

SIZES AND PACKAGING

L-200 Trim (1/4", 1/2", 5/8", 3/4" & 1")

Length	Pieces Per Carton	Cartons Per Pallet	Feet Per Carton
8'	63	48	504
10'	50	48	500

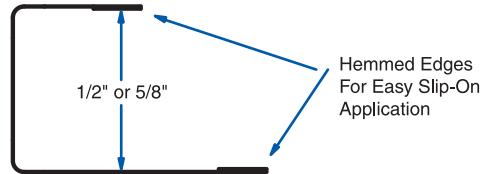
UPC labeling available upon request



PART NUMBER: SEE TEXT

J-400 TRIM (REVEAL TRIM)

Phillips J-400 trim is an economical steel channel providing edge protection around doors and windows or any partition junction openings. Hemmed edges allow for quick installation and no joint compound is required for finishing. Phillips provides J-400 trim in both 1/2" (JT5) and 5/8" (JT6). This product is available in hot-dipped galvanized, zinc bond or ShadowFree® surface coating.



Drawing not to scale

SIZES AND PACKAGING

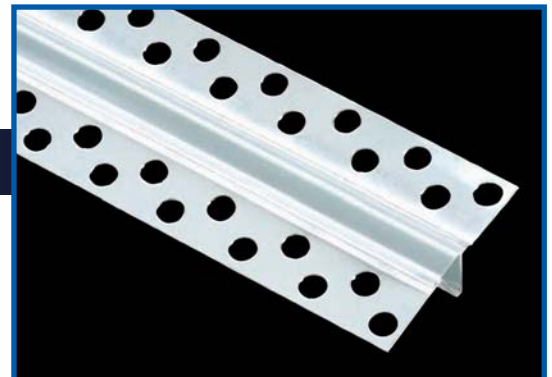
J-400 Trim (1/2" & 5/8")

Length	Pieces Per Carton	Cartons Per Pallet	Feet Per Carton
8'	63	48	504
10'	50	49	500

UPC labeling available upon request

093 EXPANSION CONTROL JOINT

Phillips 093 zinc expansion control joints are manufactured from the highest quality solid zinc coil stock for superior corrosion resistance. An excellent product for interior or exterior applications, Phillips 093 expansion control joints relieve stresses of expansion and contraction across ceilings and wall areas. The opening is protected by plastic tape which can be removed after joint compound or plaster has been applied. Perforated flanges for excellent joint compound adhesion as the joint compound penetrates through the flanges to the drywall for long lasting adhesion. The perforated flanges also allow for faster drying. This product fits standard 1/4" openings.



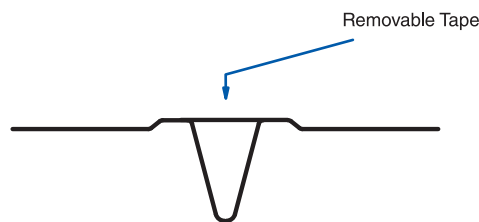
PART NUMBER: ECJ093ZNC

SIZES AND PACKAGING

093 Expansion Control Joint

Length	Pieces Per Carton	Cartons Per Pallet	Feet Per Carton
10'	25	20	250

UPC labeling available upon request

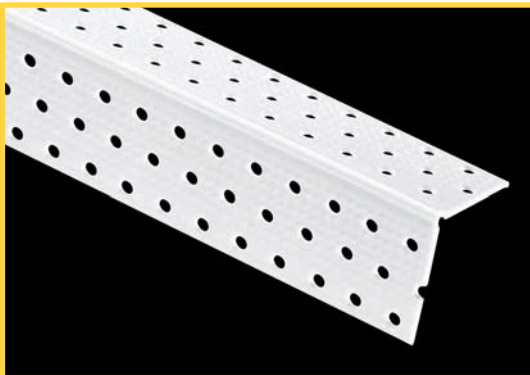


Drawing not to scale

"Engineered to Perform"

Phillips gripSTIK® Vinyl Products:

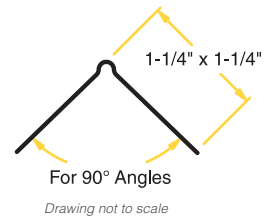
- » Textured and knurled to enhance joint compound adhesion
- » Durable, impact and corrosion resistant
- » Perforated flanges for faster drying
- » Tapered flanges for seamless finish work
- » Use for both drywall and interior veneer applications
- » U.S. Patents: 6,691,476 & 7,013,610



PART NUMBER: CBRVYL

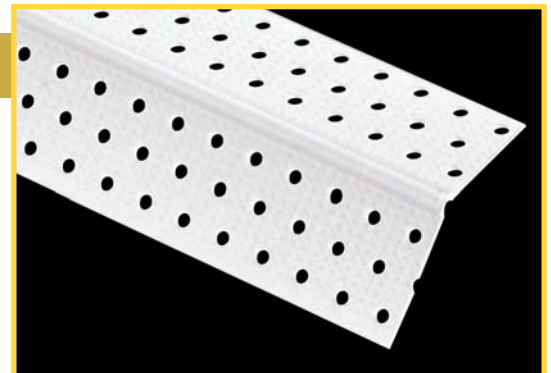
VINYL CORNER BEAD

Phillips gripSTIK® corner bead provides a rigid protection for the exposed edges of wallboard. This easy-to-install 90° corner support can be nailed, stapled or installed with Phillips gripSTIK® high tack spray adhesive (see page 21 for product details). Flanges feature many perforations and deeply knurled mud anchors for excellent joint compound adhesion. The entire product is specially textured to enhance paint and mud adhesion. The standard flange length for this product is 1-1/4".

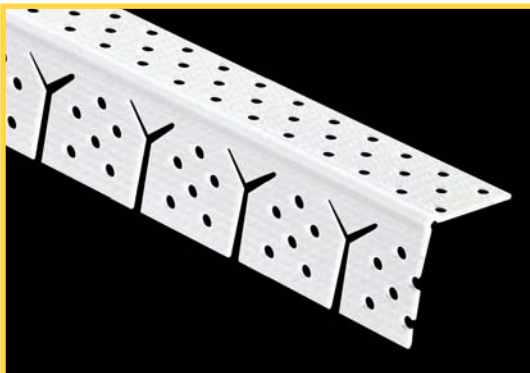
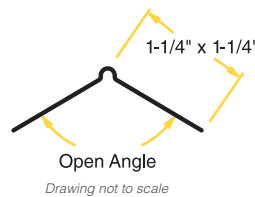


SPLAY CORNER BEAD

Phillips gripSTIK® splay bead offers a flush fit on a variety of open angle applications from exceeding 120°, making this a very versatile product. Easily install using standard industry practice with nails, staples or high tack spray adhesive (see page 21 for product details). Flanges feature many perforations and deeply knurled mud anchors for excellent joint compound adhesion. The entire product is specially textured to enhance paint and mud adhesion. The standard flange length for this product is 1-1/4".



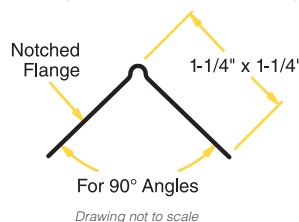
PART NUMBER: CBSVYL



PART NUMBER: CBAVYL

MAX-Flex® ARCHWAY

Phillips gripSTIK® MAX-Flex® archway bead is designed for maximum flexibility as our unique design allows it to conform to almost any radius. Phillips unique MAX-Flex® cut features "Y" shaped slits on the notched flange allowing for superior flexibility without kinking. This product features many perforations, deeply knurled mud anchors and the entire product is specially textured which all greatly enhance paint and mud adhesion. The standard flange length for this product is 1-1/4". Phillips gripSTIK® spray adhesive eases installation (see page 21 for details).



SIZES AND PACKAGING

Corner Bead (Regular, Splay & Archway)

Length	Pieces Per Carton	Cartons Per Pallet	Feet Per Carton
8'	50	50	400
9'	50	50	450
10'	50	50	500

UPC labeling available upon request

BULLNOSE VINYL CORNER BEADS

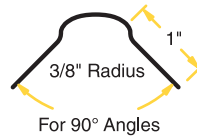
PHILLIPS



PART NUMBER: MBLVYL

3/8" BULLNOSE (MINI)

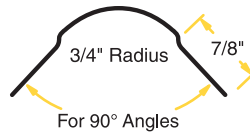
Phillips gripSTIK® Mini Bullnose is great for accenting detail in niches, layers, outside corners, windows and other areas. Flanges feature many perforations, deeply knurled mud anchors, and the entire product is specially textured to greatly enhance paint and mud adhesion. Easily install Phillips Mini Bullnose products like regular corner bead; no special drywall preparation is needed. Mini Bullnose Splay and Mini MAX-Flex® Bullnose Archway are also available; see next page for details. See below for packaging information.



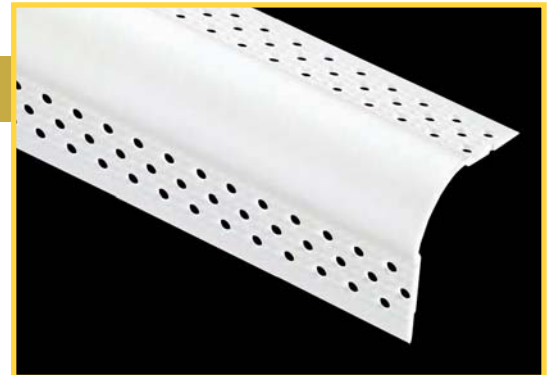
Drawing not to scale

3/4" BULLNOSE

Phillips gripSTIK® bullnose corner beads create a smooth, rounded look to drywall corners and are easily installed using standard industry practice. Flanges feature many perforations, deeply knurled mud anchors, and the entire product is specially textured to greatly enhance paint and mud adhesion. See below for packaging information.



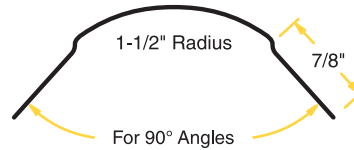
Drawing not to scale



PART NUMBER: BN3VYL

1-1/2" BULLNOSE

Phillips gripSTIK® 1-1/2" bullnose corner beads provide a larger radius for a more pronounced smooth and modern look. Flanges feature many perforations, deeply knurled mud anchors, and the entire product is specially textured to greatly enhance paint and mud adhesion.



Drawing not to scale



PART NUMBER: BN5VYL

SIZES AND PACKAGING

3/4" Bullnose (Regular, Splay & Archway)

Length	Pieces Per Carton	Cartons Per Pallet	Feet Per Carton
8'	35	50	280
9'	35	50	315
10'	35	50	350

1-1/2" Bullnose (Regular, Splay & Archway)

8'	30	48	240
9'	30	48	270
10'	30	48	300

UPC labeling available upon request

SIZES AND PACKAGING

Mini Bullnose (Regular & Splay)

Length	Pieces Per Carton	Cartons Per Pallet	Feet Per Carton
8'	35	50	280
9'	35	50	315
10'	35	50	350

Mini Bullnose Archway

8'	25	50	200
9'	25	50	225
10'	25	50	250

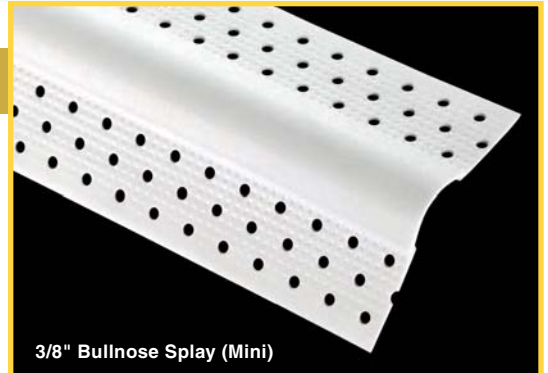
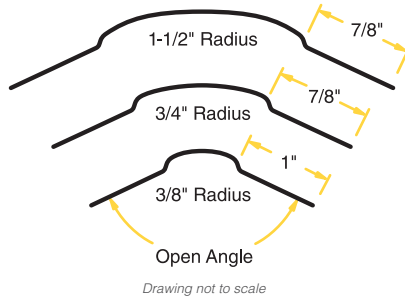
UPC labeling available upon request

BULLNOSE SPLAY

Phillips gripSTIK® bullnose splay corner beads create a smooth, rounded look to a variety of open angles exceeding 120°. Flanges feature many perforations, deeply knurled mud anchors, and the entire product is specially textured to greatly enhance paint and mud adhesion. This product is available in 1-1/2" (BS5VYL) radius, 3/4" (BS3VYL) radius and 3/8" (Mini) (MBSVYL) radius. See previous page for packaging information.



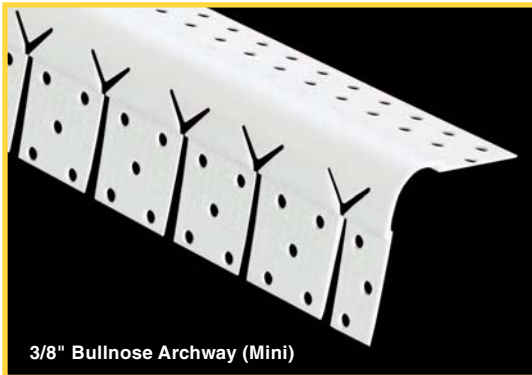
3/4" Bullnose Splay
PART NUMBER: BS3VYL



3/8" Bullnose Splay (Mini)
PART NUMBER: MBSVYL



1-1/2" Bullnose Splay
PART NUMBER: BS5VYL



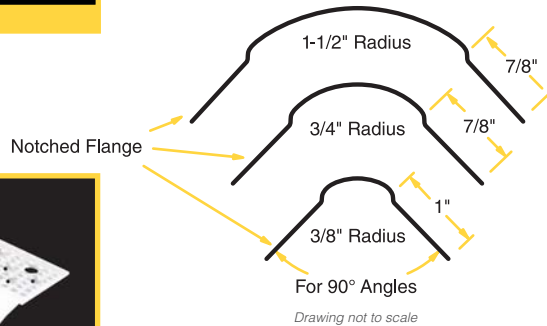
3/8" Bullnose Archway (Mini)
PART NUMBER: MBAVYL

MAX-Flex® BULLNOSE ARCHWAY

Phillips gripSTIK® MAX-Flex® bullnose archway bead is designed for maximum flexibility allowing it to conform to almost any radius creating a round, elegant look. The 3/4" radius and 1-1/2" radius feature a straight-cut design for minimal fill-in. Mini Bullnose archway (3/8") features our unique "Y" shaped slits on the notched flange allowing for superior flexibility without kinking. Flanges feature many perforations, deeply knurled mud anchors, and the entire product is specially textured to greatly enhance paint and mud adhesion. This product is available in 1-1/2" (BA5VYL) radius, 3/4" (BA3VYL) radius and 3/8" (Mini) (MBAVYL) radius. See previous page for packaging information.



1-1/2" Bullnose Archway
PART NUMBER: BA5VYL



3/4" Bullnose Archway
PART NUMBER: BA3VYL

Use gripSTIK® Spray Adhesive with Phillips Vinyl Beads & Trims for perfect adhesion. See page 21 for product details.



BULLNOSE VINYL CORNER BEADS



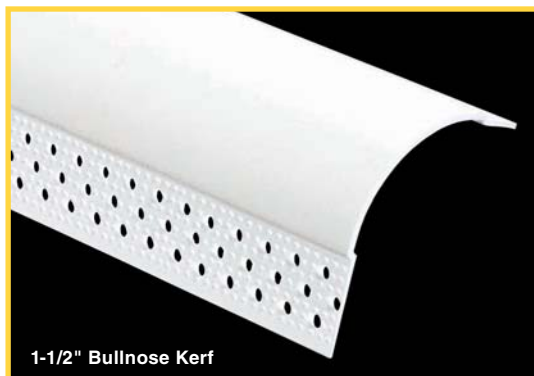
3/4" & 1-1/2" BULLNOSE KERF

Phillips gripSTIK® bullnose kerf has a unique shortened back flange allowing for easy insertion into grooved door jambs and window trims. Install using standard industry practice. This product is always a great fit and provides the smooth, round appearance associated with bullnose trims. Flanges feature many perforations, deeply knurled mud anchors, and the entire product is specially textured to greatly enhance paint and mud adhesion. Phillips offers vinyl bullnose kerf in both 3/4" (BK3VYL) and 1-1/2" (BK5VYL) radius for your convenience. The 1-1/2" radius provides a more pronounced round appearance adding a modern look to rooms.



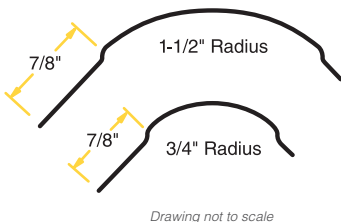
3/4" Bullnose Kerf

PART NUMBER: BK3VYL



1-1/2" Bullnose Kerf

PART NUMBER: BK5VYL



SIZES AND PACKAGING

3/4" Bullnose Kerf

Length	Pieces Per Carton	Cartons Per Pallet	Feet Per Carton
8'	35	50	280
9'	35	50	315
10'	35	50	350

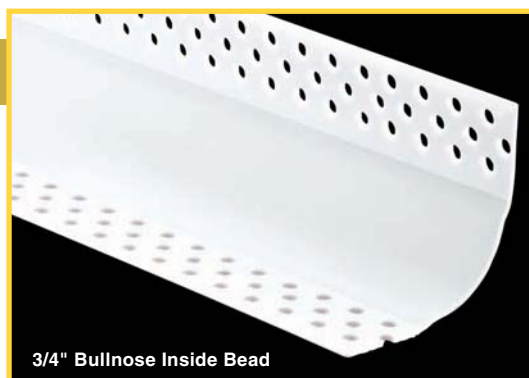
1-1/2" Bullnose Kerf

8'	30	70	240
9'	30	70	270
10'	30	70	300

UPC labeling available upon request

BULLNOSE INSIDE BEADS

Phillips gripSTIK® bullnose inside beads create a smooth, round appearance to inside corners. This product is a great way to finish off a room elegantly. Phillips provides this product in both 3/4" (BI3VYL) and 1-1/2" (BI5VYL) radius. In addition, Phillips also provides the splay or open angle version of this product in both 3/4" (BIS3VYL) and 1-1/2" (BIS5VYL) radius. Ask your sales representative for more information.



3/4" Bullnose Inside Bead

PART NUMBER: SEE TEXT

SIZES AND PACKAGING

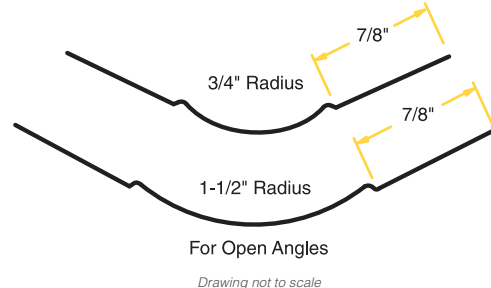
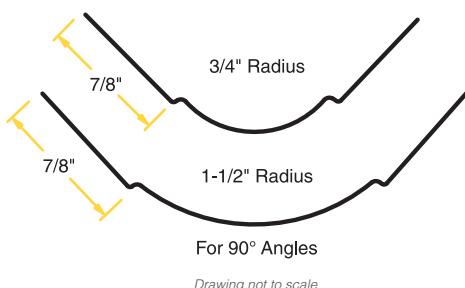
3/4" Inside Bead (Regular & Splay)

Length	Pieces Per Carton	Cartons Per Pallet	Feet Per Carton
8'	35	70	280
9'	35	70	315
10'	35	70	350

1-1/2" Inside Bead (Regular & Splay)

8'	30	70	240
9'	30	70	270
10'	30	70	300

UPC labeling available upon request



"Engineered to Perform"

Phillips gripSTIK® Corner Beads:

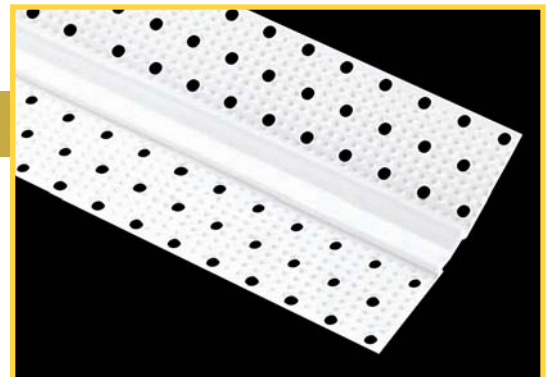
- » Perforated flanges for excellent joint compound adhesion as the joint compound penetrates through the bead to the drywall to support long-lasting adhesion
- » Deeply knurled mud anchors on flanges enhance joint compound adhesion
- » Works great for both drywall and interior veneer applications

INSIDE CORNER ADJUSTABLE

Phillips gripSTIK® inside corner adjustable has a unique flexible angle design that easily adjusts to any degree inside corner. This Phillips product is the best for finishing inside corners because it is durable, maintains shape when settlement occurs and reduces call backs. This extremely versatile product has been specially engineered to flex to virtually any degree inside or outside corner without breaking. Flanges feature many perforations, and deeply knurled mud anchors to greatly enhance paint and mud adhesion.



Drawing not to scale



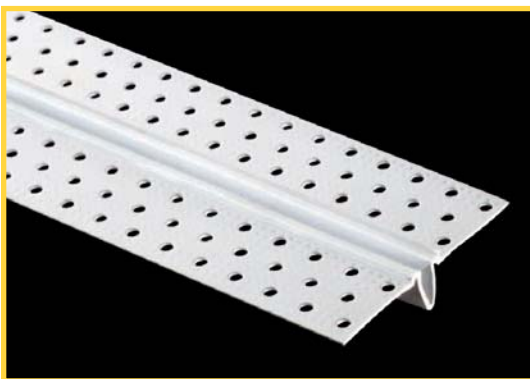
PART NUMBER: ICBVYL

SIZES AND PACKAGING

Inside Corner Adjustable

Length	Pieces Per Carton	Cartons Per Pallet	Feet Per Carton
8'	70	50	560
9'	70	50	630
10'	70	50	700

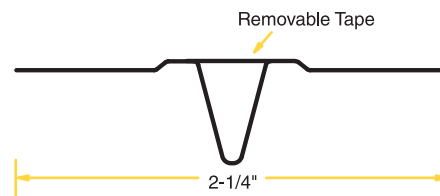
UPC labeling available upon request



PART NUMBER: EZSVYL

E-Z Strip® EXPANSION CONTROL JOINT

Phillips gripSTIK® 093 E-Z Strip® expansion control joint is designed to relieve the stresses of contraction and expansion. The expansion control joint groove is protected by plastic tape that can be easily removed after the joint finishing material has dried, leaving a clean well-formed joint. Easily install this durable and impact resistant product using standard industry practice. The perforated and knurled flanges allow for faster drying and enhance mud adhesion.



Drawing not to scale

SIZES AND PACKAGING

E-Z Strip® Expansion Control Joint

Length	Pieces Per Carton	Cartons Per Pallet	Feet Per Carton
10'	25	45	250

UPC labeling available upon request



BULLNOSE CORNER AND TRANSITION CAPS



"Engineered to Perform"

Phillips gripSTIK® Corner and Transition Caps:

- » Over 50 different corner and transition caps available
- » Works great with Phillips metal, vinyl or paper faced metal bullnose corner beads
- » U.S. Patents: RE34,547; 6,438,914; D487,520; D487,156; D501,050 and D486,920

3/4" 3-WAY CORNER

Phillips gripSTIK® 3/4" 3-way corner is designed to easily finish three intersecting bullnose 90° outside corners. This product eliminates the need for mitering and corner filling, saving time and reducing waste. Alignment tabs make it easy to match with Phillips metal, vinyl or paper faced metal bullnose corner beads. Perforated to enhance mud adhesion. Also available in 3/8" (Mini) radius and 1-1/2" (CAP387 - see below) radius. Packaging is 50 pieces per carton.



PART NUMBER: CAP387



PART NUMBER: CAP385

1-1/2" 3-WAY CORNER

Phillips gripSTIK® 1-1/2" 3-way corner is designed to easily finish three intersecting bullnose 90° outside corners. This product eliminates the need for mitering and corner filling, saving time and reducing waste. Alignment tabs make it easy to match with Phillips metal, vinyl or paper faced metal bullnose corner beads. Perforated to enhance mud adhesion. Also available in 3/8" radius (Mini) and 3/4" radius (CAP385 - see above) radius. Packaging is 50 pieces per carton.

3/4" 3-WAY SPLAY CORNER

Phillips gripSTIK® 3/4" 3-way splay corner is designed to easily finish where two 90° outside 3/4" bullnose corners intersect with one outside bullnose splay corner. This product eliminates the need for mitering and corner filling, saving time and reducing waste. Alignment tabs make it easy to match with Phillips metal, vinyl or paper faced metal bullnose corner beads. Perforated to enhance mud adhesion. Also available in 3/8" (Mini) radius and 1-1/2" (CAP187 - see below) radius. Packaging is 50 pieces per carton.



PART NUMBER: CAP187



PART NUMBER: CAP135

1-1/2" 3-WAY SPLAY CORNER

Phillips gripSTIK® 1-1/2" 3-way off-angle corner is designed to easily finish where two 90° outside 1-1/2" bullnose corners intersect with one outside bullnose splay corner. This product eliminates the need for mitering and corner filling, saving time and reducing waste. Alignment tabs make it easy to match with Phillips metal, vinyl or paper faced metal bullnose corner beads. Perforated to enhance mud adhesion. Also available in 3/8" (Mini) radius and 3/4" (CAP135 - see above) radius. Packaging is 50 pieces per carton.

2-WAY CORNER

Phillips gripSTIK® 2-way corners are designed to easily finish two intersecting 90° outside bullnose corners. This product works great to cap corners of windows, closets, doorways, skylights and other areas. Corner caps eliminate the need for mitering and corner filling,

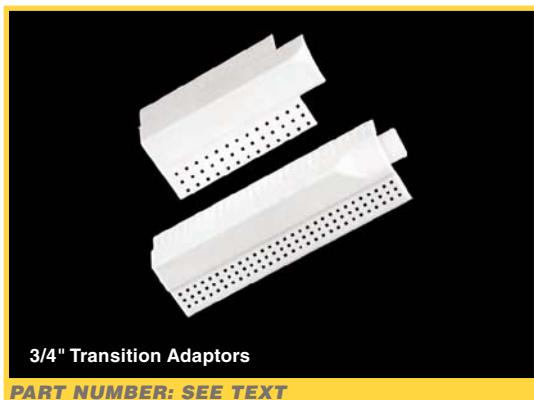
saving time and reducing waste. Perforated to enhance mud adhesion. Alignment tabs make it easy to match with Phillips metal, vinyl or paper faced metal bullnose corner beads. Available in 3/8" (Mini), 3/4" (CAP285) and 1-1/2" (CAP287). The 3/8" (Mini) is a special order product. Packaging is 50 pieces per carton.



2-WAY SPLAY CORNER

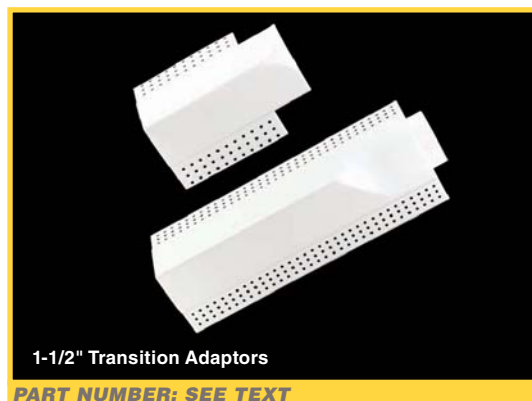
Phillips gripSTIK® 2-way splay corners are designed to easily finish where two 90° outside bullnose corners intersect at angles greater than 90° or open angles. This product works great to corner cap windows, closets, doorways, skylights and other areas. Corner caps eliminate the need for mitering and corner filling, saving time and reducing waste. Perforated to enhance mud adhesion. Alignment tabs make it easy to match with Phillips metal, vinyl or paper faced metal bullnose corner beads.

Available in 3/8" (Mini), 3/4" (CAP235) and 1-1/2" (CAP197 - not pictured). The 3/8" (Mini) is a special order product. Packaging is 50 pieces per carton.



TRANSITION ADAPTORS

Phillips gripSTIK® transition caps are designed to eliminate gaps between bullnose corner bead and baseboard or crown molding by transitioning bullnose corners to 90° corners. Phillips transition caps install quickly and easily using standard industry practice and can be used with Phillips metal, vinyl or paper faced corner beads. Perforated to enhance mud adhesion. Available in 3/4" Overlap Transition Cap (TRN790), 3/4" Transition Cap with Alignment Tab (TRN8590), 1-1/2" Overlap Transition Cap (TRN890) and 1-1/2" Transition Cap with Alignment Tab (TRN8790). 3/8" (Mini) is also available as a special order product. Packaging is 50 pieces per carton.



DIDN'T FIND THE CORNER OR TRANSITION CAP YOU WERE SEEKING?



Phillips has over 50 different corner and transition caps available.

Call your sales representative at 800.822.5055 for more information or visit www.phillipsmfg.com to see Phillips gripSTIK® 90° 3-way square corner cap (CAP390), 3-way splay corner cap (CAP190) and much more.



VINYL TRIMS AND FINISHING PRODUCTS

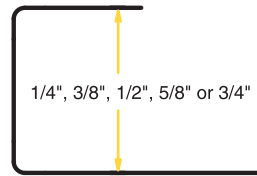


VINYL J-TRIM

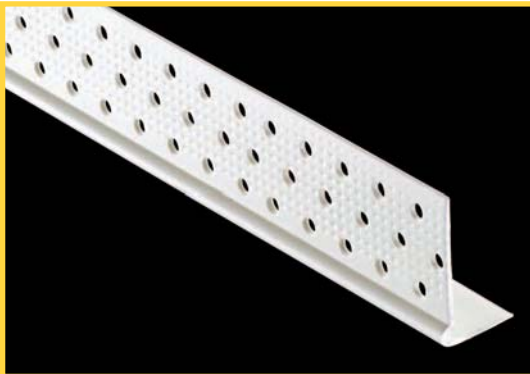
Phillips gripSTIK® J-Trim provides a finished edge at door and window openings along with other various wallboard intersections. This durable and impact resistant trim was designed with ease of installation in mind. J-Trim does not require any joint compound and can be nailed or slipped on. Install using standard industry practice. Phillips offers this product in 1/4" (JT2VYL), 3/8" (JT3VYL), 1/2" (JT5VYL), 5/8" (JT6VYL) and 3/4" (JT7VYL).



PART NUMBER: SEE TEXT



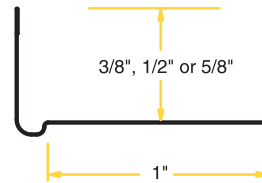
Drawing not to scale



PART NUMBER: SEE TEXT

L-TRIM

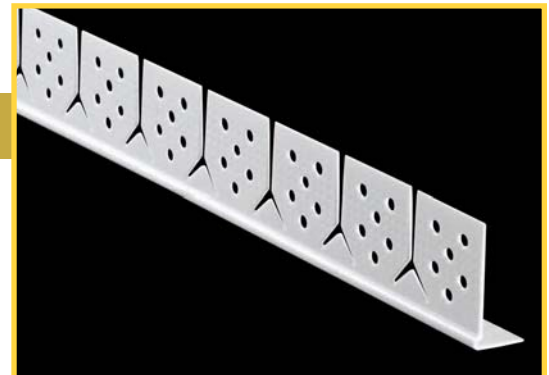
Phillips gripSTIK® L-Trim provides a clean, sharp edge at door, window, ceiling and other terminations. Install using standard industry practice. The many perforations and raised shoulder enhance strong compound adhesion and provide for a flush finish. Its deeply knurled mud anchors and specially textured surface provide superior paint and mud adhesion. Phillips offers this product in 3/8" (LT3VYL), 1/2" (LT5VYL) and 5/8" (LT6VYL).



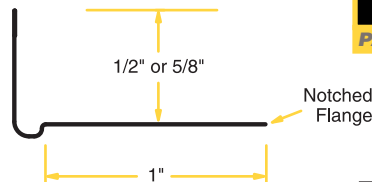
Drawing not to scale

MAX-Flex® L-TRIM ARCHWAY

Phillips gripSTIK® MAX-Flex® L-Trim archway is designed for maximum flexibility, conforming to almost any radius. This product features "Y" shaped slits on the notched flange for superior flexibility without kinking. The entire product is specially textured to enhance paint and mud adhesion. This product works great to provide a clean edge at door, window, ceiling and other terminations. This product is available in 1/2" (LA5VYL) and 5/8" (LA6VYL) sizes.



PART NUMBER: SEE TEXT



Drawing not to scale

SIZES AND PACKAGING

J-Trim (All Sizes)

Length	Pieces Per Carton	Cartons Per Pallet	Feet Per Carton
8'	50	48	400
9'	50	48	450
10'	50	48	500

L-Trim (All Sizes)

8'	80	48	640
9'	80	48	720
10'	80	48	800

UPC labeling available upon request

SIZES AND PACKAGING

MAX-Flex® L-Trim Archway (All Sizes)

Length	Pieces Per Carton	Cartons Per Pallet	Feet Per Carton
8'	80	48	640
9'	80	48	720
10'	80	48	800

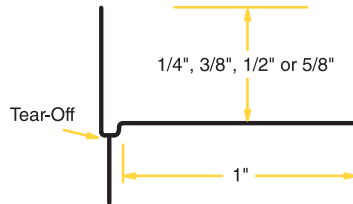
UPC labeling available upon request

L-TEAR STRIP

Phillips gripSTIK® L-Tear Strip provides a clean line at a variety of wallboard intersections. The tear-off strip provides a protective edge and a guide for drywall finishing knives. Once joint compound is applied, finished and painted, the tear-off strip is removed to form a clean, crisp edge. Its deeply knurled mud anchors, many perforations, and specially textured surface provide superior paint and joint compound adhesion. Phillips offers this product in 1/4" (TS2VYL), 3/8" (TS3VYL), 1/2" (TS5VYL) and 5/8" (TS6VYL).



PART NUMBER: SEE TEXT



PART NUMBER: FTSVYL

FLAT L-TEAR STRIP

Phillips gripSTIK® Flat L-Tear Strip provides a clean line at a variety of wallboard intersections. A one-size-fits-all product, the Flat L-Tear Strip is used where a straight edge is needed and there is not enough room at the intersection for the leg. The tear-off strip provides a protective edge and a guide for drywall finishing knives. Once joint compound is applied, finished and painted, the tear-off strip is removed to form a clean, crisp edge. This product features deeply knurled mud anchors, many perforations, and specially textured surface to provide superior paint and joint compound adhesion.



gripSTIK® SPRAY ADHESIVE

Phillips gripSTIK® spray adhesive is a high tack web based spray adhesive ideal for adhering vinyl corner bead to drywall. This product works great when applying Phillips gripSTIK® vinyl beads and trims (see pages 13-21 for product details). This web based spray adhesive features a unique adjustable nozzle for desired spray strength and width. This quality product is available in 17 oz. cans. Packaging is 12 cans per case, 80 cases per pallet.



PART NUMBER: 999SPRAY

SIZES AND PACKAGING

L-Tear Strip (All Sizes)

Length	Pieces Per Carton	Cartons Per Pallet	Feet Per Carton
8'	50	48	400
9'	50	48	450
10'	50	48	500

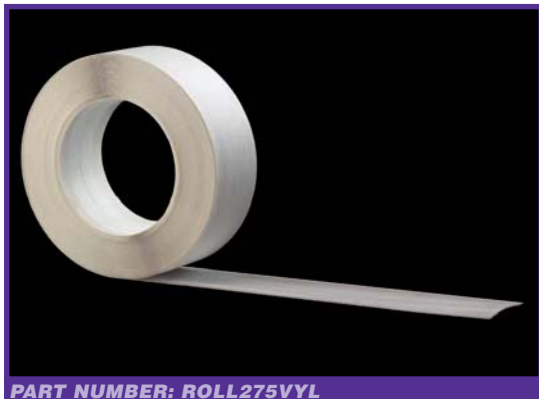
Flat L-Tear Strip

8'	50	48	400
10'	50	48	500

UPC labeling available upon request



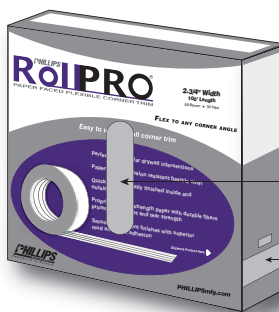
PAPER FACED FLEXIBLE CORNER TRIM



PART NUMBER: ROLL275VYL

2-3/4" RoIIPRO® PAPER FACED TRIM

Phillips RoIIPRO® paper faced flexible corner trim is an easy-to-use versatile product for drywall finishing. This product features a paper faced corrosion resistant flexible vinyl that flexes to any corner angle for quick professionally finished inside and outside corners. It is perfect for irregular drywall intersections and provides a smooth consistent finish with superior mud and paint adhesion. This product features proprietary high strength paper with durable fibers promoting high wet and tear strength. It is available in 2-3/4" width and comes in 100' rolls.



Quick-Grab Handle

Product Dispenser

SIZES AND PACKAGING

RoIIPRO® Flexible Corner Trim

Width	Length	Rolls Per Carton	Cartons Per Case	Feet Per Case
2-3/4"	100'	1	10	1000'

UPC labeling available upon request

3-1/4" RoIIPRO® PAPER FACED TRIM

Phillips RoIIPRO® paper faced flexible corner trim is an easy-to-use versatile product for drywall finishing. This product features a paper faced corrosion resistant flexible vinyl that flexes to any corner angle for quick professionally finished inside and outside corners. It is perfect for irregular drywall intersections and provides a smooth consistent finish with superior mud and paint adhesion. This product features proprietary high strength paper with durable fibers promoting high wet and tear strength. It is available in 3-1/4" width and comes in 100' rolls.



PART NUMBER: ROLL325VYL



Quick-Grab Handle

Product Dispenser

SIZES AND PACKAGING

RoIIPRO® Flexible Corner Trim

Width	Length	Rolls Per Carton	Cartons Per Case	Feet Per Case
3-1/4"	100'	1	10	1000'

UPC labeling available upon request

Looking for a mud hopper? Phillips offers mud hoppers for easy installation of our Paper Faced Beads & Trims. See page 25 for product details.



"Engineered to Perform"

Phillips kwikSTIK® Paper Faced Products:

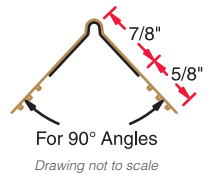
- » Rust preventative fully galvanized coating to withstand elements and adverse drying conditions
- » No edge cracking
- » No nail pops
- » High strength proprietary paper prevents balling when sanding



PART NUMBER: PEW14EGB

P1 XW EL (PEW)

Phillips kwikSTIK® P1 XW EL outside corner bead can be used on 90° outside corners with any standard drywall thickness for a clean, professional finish. This product features approximately 20% thicker steel than ASTM standard C1047 minimum requirement for a strong, durable corner. P1 XW EL is tape-on, meaning no fasteners or nails are needed for installation. Specially engineered paper provides superior mud and paint adhesion.



P1 MICRO BEAD (P1M)

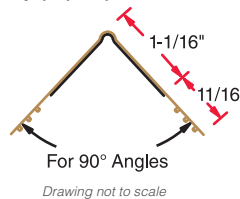
Phillips kwikSTIK® P1 Micro Bead outside corner bead is manufactured with ease and speed of installation in mind. With its smaller bead and wider flanges, this product goes up fast and requires less mudding, saving both time and money. Phillips P1 Micro Bead features approximately 20% thicker steel than ASTM standard C1047 minimum requirement for a strong, durable corner. No fasteners or nails are needed for installation. Top quality paper provides superior mud and paint adhesion.



PART NUMBER: P1M14EGB

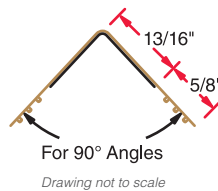


PART NUMBER: P1M14EGB



NO BEAD P1 X EL NB (P1N)

Phillips kwikSTIK® P1 X EL NB outside square corner bead is designed as an economical product as it features no bead meaning minimal joint compound is required for installation. Phillips P1 X EL NB features approximately 20% thicker steel than ASTM standard C1047 minimum requirement for a strong, durable corner. No fasteners or nails are needed for installation, and specially engineered paper provides superior mud and paint adhesion. See page 24 for No Bead Super Wide (PNB).



SIZES AND PACKAGING

PEW, P1M, P1N

Length	Pieces Per Carton	Cartons Per Pallet	Feet Per Carton
8'	50	56	400
9'	50	56	450
10'	50	56	500

UPC labeling available upon request

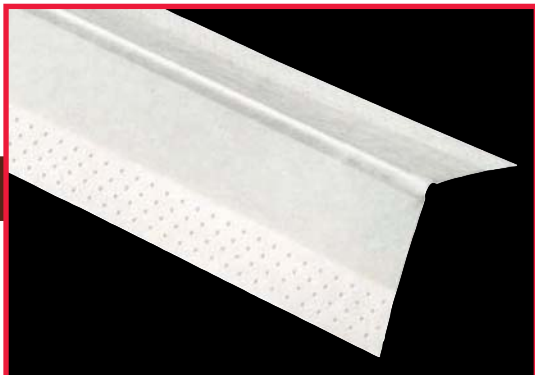
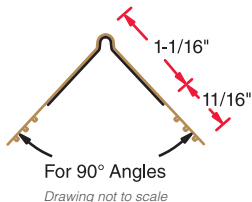


TAPE-ON PAPER FACED CORNER BEADS



P1 DELUXE SUPER WIDE (PDW)

Phillips kwikSTIK® P1 Deluxe Super Wide outside corner bead features wider flanges for more complete coverage when finishing 90° corners. This product meets ASTM standard C1047. No fasteners or nails are needed for installation.



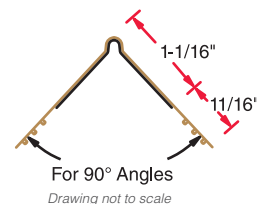
PART NUMBER: PDW12EGB



PART NUMBER: PSW10EGB

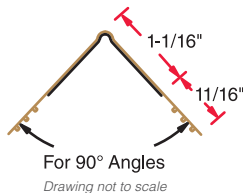
P1 SUPER WIDE (PSW)

Phillips kwikSTIK® P1 Super Wide outside corner bead features wider flanges for more complete coverage. This product is essentially the same product as P1 Deluxe Super Wide except P1 Super Wide utilizes slightly lighter steel making it a more economical product. This slightly lighter steel does not comply with ASTM standard C1047; however, this product meets all other applicable ASTM standard requirements.

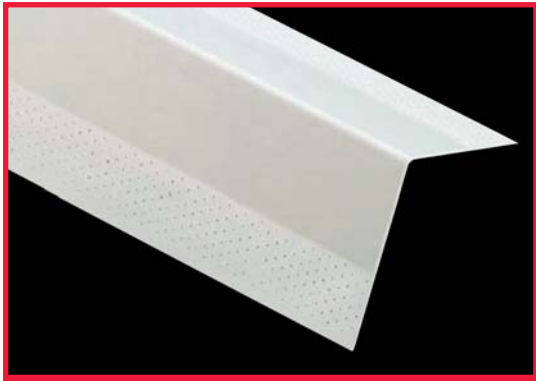


DELUXE MICRO BEAD (PDM)

Phillips kwikSTIK® Deluxe Micro Bead outside corner bead is manufactured with ease and speed of installation in mind. With its smaller bead and wider flanges, this product goes up fast and requires less mudding, saving both time and money. This product meets ASTM standard C1047. No fasteners or nails are needed for installation. Top quality paper provides superior mud and paint adhesion.



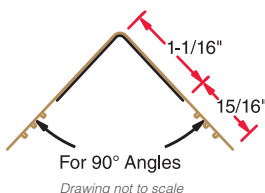
PART NUMBER: PDM12EGB



PART NUMBER: PNB12EGB

NO BEAD SUPER WIDE (PNB)

Phillips kwikSTIK® No Bead Super Wide outside square corner bead is designed as an economical product as it features no bead meaning minimal joint compound is required for installation. Phillips No Bead Super Wide meets ASTM standard C1047 requirements. This product features extra wide flanges for additional coverage where needed. No fasteners or nails are needed for installation, and specially engineered paper provides superior mud and paint adhesion.



SIZES AND PACKAGING			
PDW, PSW, PDM, PNB			
Length	Pieces Per Carton	Cartons Per Pallet	Feet Per Carton
8'	50	56	400
9'	50	56	450
10'	50	56	500

UPC labeling available upon request

"Engineered to Perform"

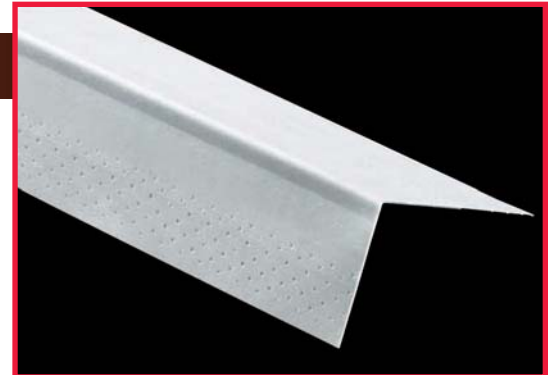
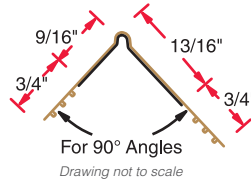
Phillips kwikSTIK® Paper Faced Products:

- » No fasteners or nails needed for installation
- » Perforated to help drying and serve as mud anchors
- » Features approximately 30% more mud anchors per square inch than competitive products
- » Proprietary paper composition promoting high wet and tear strength



P1W UNEVEN LEG (PUL)

Phillips P1W outside square corner bead features an uneven leg designed to finish 90° corners. This product features approximately 20% thicker steel than ASTM standard C1047 minimum requirement for a strong, durable corner. No fasteners or nails are needed for installation, and specially engineered paper provides superior mud and paint adhesion.



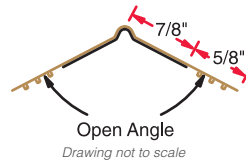
PART NUMBER: PUL14EGB



PART NUMBER: PSS14EGB

P1-OS SPLAY (PSS)

Phillips kwikSTIK® P1-OS outside splay corner bead is designed to finish open angle corners exceeding 120°. P1-OS features approximately 20% thicker steel than ASTM standard C1047 minimum requirement for a strong, durable corner. No fasteners or nails are needed for installation.



PART NUMBER: HOPPEROC

MUD HOPPER

Phillips Mud Hoppers work great to easily install kwikSTIK® Paper Faced Beads and Trims. This hopper is designed for all tape-on 90°, 3/4" bullnose and L beads. Phillips Mud Hoppers eliminate time consuming work, provide easy clean-up and are lightweight. Ask your Phillips sales representative for more information.

SIZES AND PACKAGING

PUL, PSS

Length	Pieces Per Carton	Cartons Per Pallet	Feet Per Carton
8'	50	56	400
9'	50	56	450
10'	50	56	500

UPC labeling available upon request



TAPE-ON BULLNOSE PAPER FACED CORNER BEADS

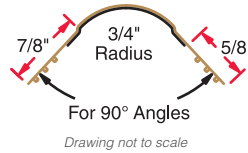


SLOK (PBT)

Phillips kwikSTIK® 3/4" SLOK bullnose corner bead provides a smooth, rounded finish to outside 90° corners. This product features approximately 20% thicker steel than ASTM standard C1047 minimum requirement for a strong, durable corner. Specially engineered paper provides superior mud and paint adhesion on all Phillips paper faced products. No fasteners or nails are needed for installation with Phillips kwikSTIK® tape-on corner beads.



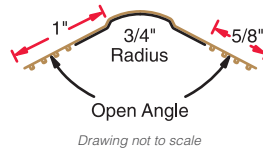
PART NUMBER: PBT14EGB



PART NUMBER: PAT14EGB

SLOK-OS (PAT)

Phillips kwikSTIK® 3/4" SLOK-OS bullnose splay corner bead works great to provide a more pronounced round finish to outside corners exceeding 120°. This product features approximately 20% thicker steel than ASTM standard C1047 minimum requirement for a strong, durable corner. Specially engineered paper provides superior mud and paint adhesion on all Phillips paper faced products. No fasteners or nails are needed for installation with Phillips kwikSTIK® tape-on corner beads.

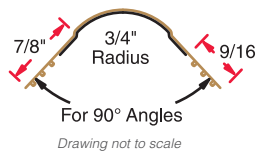


3/4" SOUTHWESTERN BULLNOSE (PST)

Phillips kwikSTIK® 3/4" Southwestern Bullnose corner bead is an economical bead providing a round, smooth appearance to 90° outside corners. This product utilizes slightly lighter steel which does not meet ASTM standard C1047; however, this product meets all other applicable ASTM standard requirements. No fasteners or nails are needed for installation, and specially engineered paper provides superior mud and paint adhesion.



PART NUMBER: PST10EGB



SIZES AND PACKAGING			
PBT, PAT, PST			
Length	Pieces Per Carton	Cartons Per Pallet	Feet Per Carton
8'	50	56	400
9'	50	56	450
10'	50	56	500

UPC labeling available upon request

Phillips Paper Faced Beads & Trims work great with our extensive line of Corner & Transition Caps. See pages 18-19 for details.



"Engineered to Perform"

Phillips kwikSTIK® Paper Faced Products:

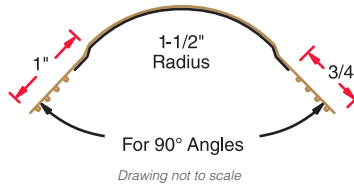
- » Cut down finishing time
- » Require less joint compound
- » No call backs
- » U.S. Patents: 6,295,776; 6,539,680; 6,722,092 and 7,013,610



PART NUMBER: PHT14EGB

1-1/2" BULLNOSE (PHT)

Phillips kwikSTIK® 1-1/2" Bullnose corner bead works great to provide a more pronounced round finish to outside 90° corners. This product features approximately 20% thicker steel than ASTM standard C1047 minimum requirement for a strong, durable corner. Specially engineered paper provides superior mud and paint adhesion on all Phillips paper faced products. No fasteners or nails are needed for installation with Phillips kwikSTIK® tape-on corner beads.



1-1/2" BULLNOSE SPLAY (PJT)

Phillips kwikSTIK® 1-1/2" Bullnose Splay corner bead works great to provide a more pronounced round finish to outside corners exceeding 120°. This product features approximately 20% thicker steel than ASTM standard C1047 minimum requirement for a strong, durable corner. Specially engineered paper provides superior mud and paint adhesion on all Phillips paper faced products. No fasteners or nails are needed for installation with Phillips kwikSTIK® tape-on corner beads.



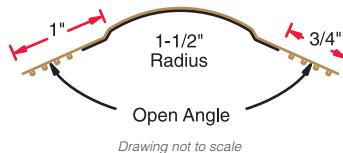
PART NUMBER: PJT14EGB

SIZES AND PACKAGING

PHT, PJT

Length	Pieces Per Carton	Cartons Per Pallet	Feet Per Carton
8'	25	56	200
9'	25	56	225
10'	25	56	250

UPC labeling available upon request



NAIL-ON PAPER FACED CORNER BEADS



"Engineered to Perform"

Phillips kwikSTIK® Paper Faced Products:

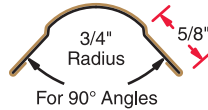
- » Proprietary high strength paper with durable fibers for smooth consistent finishes with superior mud and paint adhesion
- » Extreme heat, cold and water tested for superior bond between steel and paper to eliminate delamination



PART NUMBER: PBN14EGB

SLOK-N (PBN)

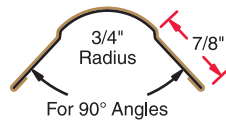
Phillips kwikSTIK® SLOK-N nail-on bullnose corner bead is designed for smooth, round outside corners where nailing or other mechanical fastening is desired. This metal corner bead is covered with our specially engineered paper providing superior mud and paint adhesion. SLOK-N features approximately 20% thicker steel than ASTM standard C1047 minimum requirement for a strong, durable corner.



Drawing not to scale

SLOK-NXW (PEN)

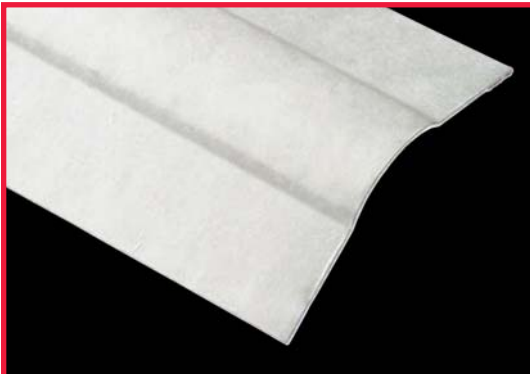
Phillips kwikSTIK® SLOK-NXW nail-on bullnose extra wide corner bead is designed for smooth, round outside corners where nailing or other mechanical fastening is desired. This product provides wider flanges for easier nailing and maximum coverage. SLOK-NXW features approximately 20% thicker steel than ASTM standard C1047 minimum requirement for a strong, durable corner. This metal corner bead is covered with our specially engineered paper providing superior mud and paint adhesion.



Drawing not to scale



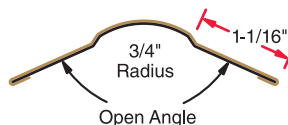
PART NUMBER: PEN14EGB



PART NUMBER: PAN14EGB

SLOK-NOS (PAN)

Phillips kwikSTIK® SLOK-NOS nail-on bullnose splay corner bead provides a round, smooth corner to open angles exceeding 120° where nailing or other mechanical fastening is desired. This product features approximately 20% thicker steel than ASTM standard C1047 minimum requirement for a strong, durable corner. SLOK-NOS is covered with our specially engineered paper providing superior mud and paint adhesion.



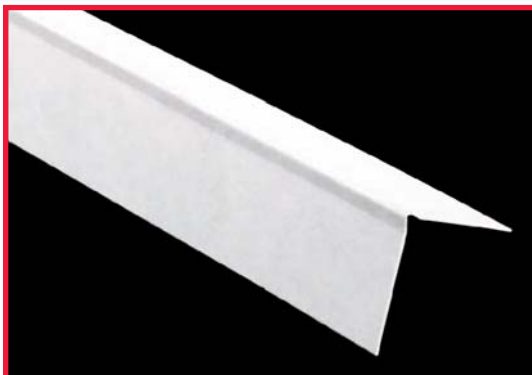
Drawing not to scale

SIZES AND PACKAGING

PBN, PEN, PAN

Length	Pieces Per Carton	Cartons Per Pallet	Feet Per Carton
8'	50	56	400
9'	50	56	450
10'	50	56	500

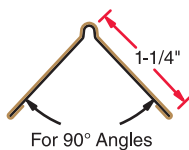
UPC labeling available upon request



PART NUMBER: PNW14EGB

NAIL-ON SQUARE BEAD (PNW)

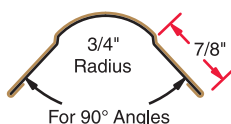
Phillips kwikSTIK® nail-on square bead is used on 90° corners for a clean professional look. This metal corner bead is covered with our specially engineered paper providing superior paint and mud adhesion. Standard flange length is 1-1/4".



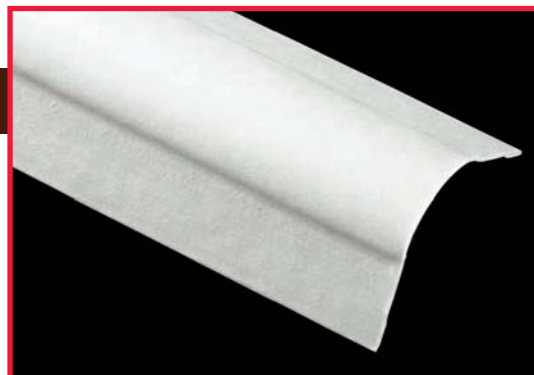
Drawing not to scale

DELUXE SOUTHWESTERN-NXW (PSD)

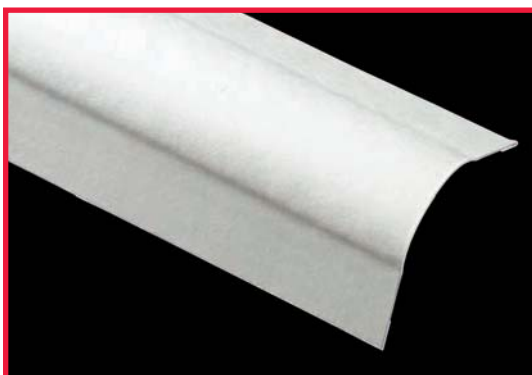
Phillips kwikSTIK® Deluxe Southwestern-NXW nail-on bullnose extra wide corner bead is designed for smooth, round corners where nailing or other mechanical fastening is desired. This product is an economical alternative to SLOK-NXW as it features the same fundamental properties as the SLOK-NXW except this product utilizes slightly lighter steel that meets ASTM standard C1047.



Drawing not to scale



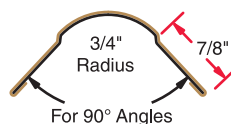
PART NUMBER: PSD12EGB



PART NUMBER: PSN10EGB

SOUTHWESTERN-NXW (PSN)

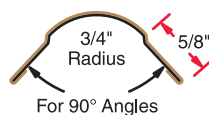
Phillips kwikSTIK® Southwestern-NXW nail-on bullnose extra wide corner bead is designed for smooth, round corners where nailing or other mechanical fastening is desired. This product is an economical alternative to both SLOK-NXW and Deluxe Southwestern-NXW as it features the same fundamental properties as these two products except this product utilizes slightly lighter steel that does not meet ASTM standard C1047. However, this product meets all other applicable ASTM standard requirements.



Drawing not to scale

SOUTHWESTERN (PBS)

Phillips kwikSTIK® Southwestern nail-on bullnose corner bead provides a round, smooth corner where nailing or other mechanical fastening is desired. This product is an economical alternative to SLOK-N as it features the same fundamental properties as SLOK-N except this product utilizes slightly lighter steel that does not meet ASTM standard C1047. However, this product meets all other applicable ASTM standard requirements.



Drawing not to scale



PART NUMBER: PBS10EGB

SIZES AND PACKAGING

PNW, PSD, PSN, PBS

Length	Pieces Per Carton	Cartons Per Pallet	Feet Per Carton
8'	50	56	400
9'	50	56	450
10'	50	56	500

UPC labeling available upon request



PAPER FACED TRIMS



PART NUMBER: PIC14EGB

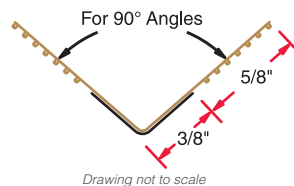
SIZES AND PACKAGING

PIC, PSI, PL1, PL5

Length	Pieces Per Carton	Cartons Per Pallet	Feet Per Carton
8'	50	56	400
9'	50	56	450
10'	50	56	500

UPC labeling available upon request

P2 (PIC)

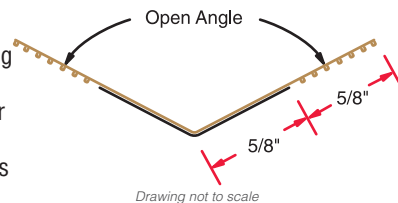


Drawing not to scale

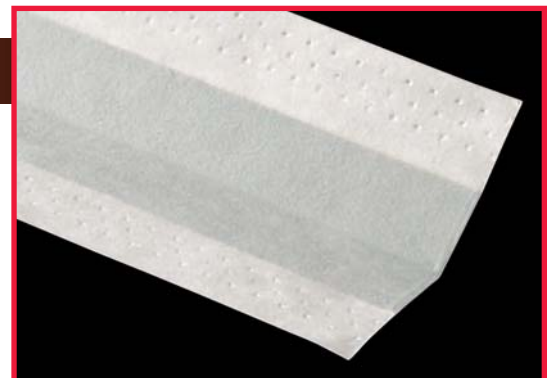
Phillips kwikSTIK® P2 tape-on inside corner trim is designed to form a true inside (90°) corner. This product features approximately 20% thicker steel than ASTM standard C1047 minimum requirement for a strong, durable inside corner. P2 is tape-on meaning no fasteners or nails are needed for installation. Specially engineered paper provides superior mud and paint adhesion.

P2-OS (PSI)

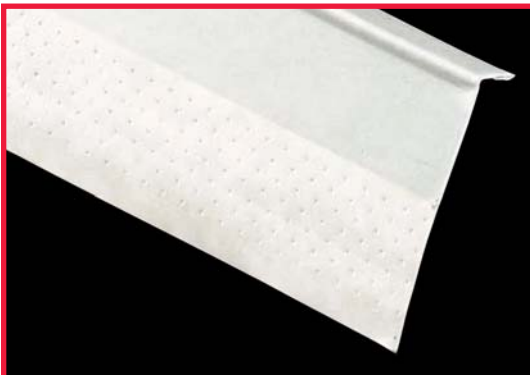
Phillips kwikSTIK® P2-OS tape-on splay inside corner is designed for wider open angles on inside corners exceeding 120°. This product features approximately 20% thicker steel than ASTM standard C1047 minimum requirement for a strong, durable inside corner. No fasteners or nails are needed for installation. Specially engineered paper provides superior mud and paint adhesion.



Drawing not to scale



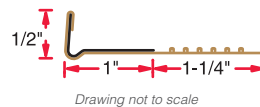
PART NUMBER: PSI14EGB



PART NUMBER: PL114EGB

1/2" P4 L-TRIM (PL1)

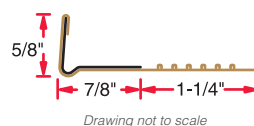
Phillips kwikSTIK® 1/2" P4 L-Trim tape-on trim is ideal where wallboard abuts with suspended ceilings, beams, plaster, masonry and concrete walls, as well as untrimmed door and window jambs. L-Trim features approximately 20% thicker steel than ASTM standard C1047 minimum requirement for a strong, durable corner. No fasteners or nails are needed for installation, and specially engineered paper provides superior mud and paint adhesion. Also available without a bead.



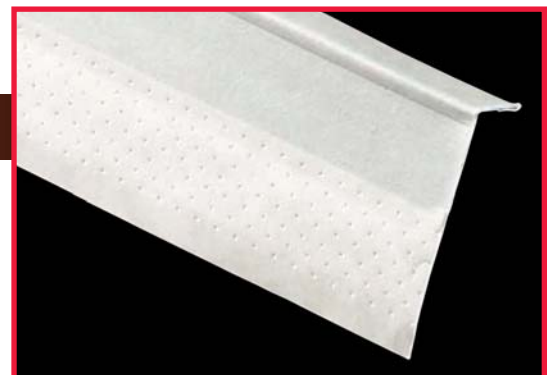
Drawing not to scale

5/8" P4 L-TRIM (PL5)

Phillips kwikSTIK® 5/8" P4 L-Trim tape-on trim is ideal where wallboard abuts with suspended ceilings, beams, plaster, masonry and concrete walls, as well as untrimmed door and window jambs. This product features approximately 20% thicker steel than ASTM standard C1047 minimum requirement for a strong, durable corner. This product is tape-on meaning no fasteners or nails are needed for installation. Specially engineered paper provides superior mud and paint adhesion. Also available without a bead.



Drawing not to scale



PART NUMBER: PL514EGB

Phillips P4 L-Trim is also available in No Bead. Visit www.phillipsmfg.com for more information.



"Engineered to Perform"

Phillips Resilient Sound Channel:

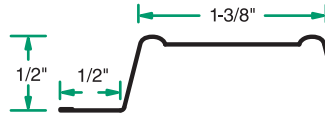
- » Hemmed edges for safe and easy installation
- » Deeply knurled to eliminate wandering
- » RC-2 features expanded metal for quality sound control



PART NUMBER: RC125HDG

RC-1 Tru 25® GAUGE

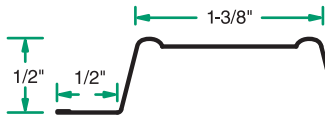
Phillips RC-1 is a resilient sound channel designed to decrease sound transmission through wall partitions and ceilings. Phillips RC-1 Tru 25® is manufactured to exacting specifications to minimize sound transmission. Phillips RC-1 works great to prevent ridging and cracking in ceilings. RC-1 is deeply knurled for positive screw placement and to eliminate wandering. RC-1 is also available in Weath-Ex® (see below) and Standard Duty (RC1SDHDG). See below for packaging information.



Drawing not to scale

RC-1 Weath-Ex® Tru 25® GAUGE

Phillips RC-1 Weath-Ex® Tru 25® is a resilient sound channel designed to decrease sound transmission through wall partitions and ceilings. Phillips RC-1 Weath-Ex® Tru 25® is manufactured to exacting specifications to minimize sound transmission. Phillips RC-1 works great to prevent ridging and cracking in ceilings. RC-1 is deeply knurled for positive screw placement and to eliminate wandering. Phillips RC-1 Weath-Ex® has an extra surface coating over hot-dipped galvanized material to provide extra corrosion protection. See below for packaging information.



Drawing not to scale



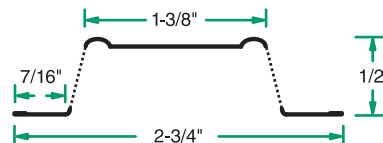
PART NUMBER: RC125HDP



PART NUMBER: RC225HDG

RC-2 (TWO LEG RESILIENT SOUND CHANNEL)

Phillips RC-2 resilient sound channel is used as cross furring members for resilient attachment of gypsum wallboard or lath on ceilings and partitions. RC-2 features expanded metal which decreases sound transmission through wall partitions and ceilings. Hemmed edges allow for safe and easy installation. The RC-2 features two legs for greater attachment security. Channel depth is 1/2", and it is manufactured with 25 gauge galvanized steel.



Drawing not to scale

SIZES AND PACKAGING

RC-1

Length	Pieces Per Bundle	Bundles Per Pallet	Feet Per Bundle
10'	20	50	200
12'	20	50	240

UPC labeling available upon request

SIZES AND PACKAGING

RC-2

Length	Pieces Per Bundle	Bundles Per Pallet	Feet Per Bundle
10'	40	42	400
12'	40	42	480

UPC labeling available upon request

CHANNELS



"Engineered to Perform"

Phillips Metal Channels:

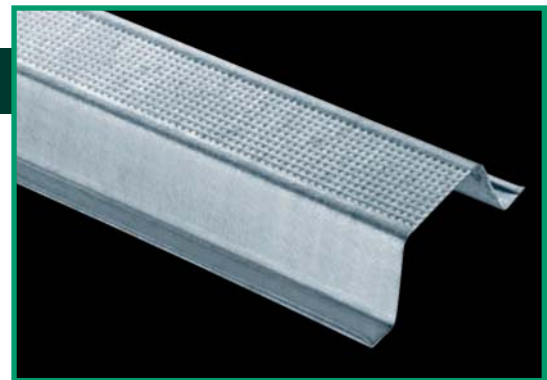
- » Wide nailing flanges for positive clip attachment
- » Hemmed edges and knurling ensure positive screw location and eliminate wandering

7/8" DWC HAT FURRING CHANNEL

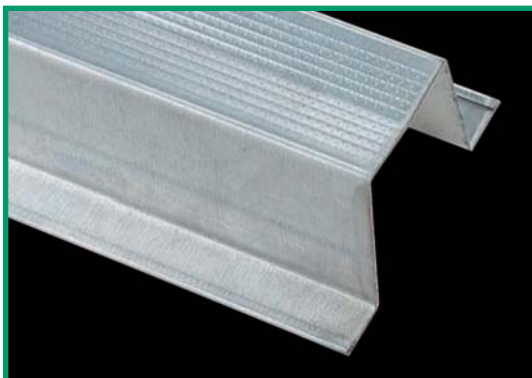
Phillips 7/8" DWC Hat Furring Channel is a ceiling and wall furring channel designed with wide nailing flanges for positive clip attachment. Phillips offers this product in 25, 22 and 20 gauge steel. In 25 gauge steel, this product features hemmed edges and knurling to ensure positive screw location and eliminate wandering. The standard length is 12'; however, other lengths may be available.



Drawing not to scale



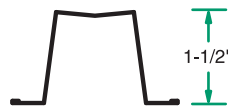
PART NUMBER: 087F125



PART NUMBER: 150F125

1-1/2" DWC HAT FURRING CHANNEL

Phillips 1-1/2" DWC Hat Furring Channel features a deeper furring channel for an increasing number of applications. Phillips offers this product in 25, 22 and 20 gauge steel. In 25 gauge steel, this product features hemmed edges and knurling to ensure positive screw location and eliminate wandering. The standard length is 12'; however, other lengths may be available.



Drawing not to scale

SIZES AND PACKAGING				
DWC Hat Furring Channel				
Product Size	Length	Pieces Per Bundle	Bundles Per Pallet	Feet Per Bundle
20 Gauge				
7/8"	12'	10	45	120
1-1/2"	12'	10	45	120
22 & 25 Gauge				
7/8"	12'	20	45	240
1-1/2"	12'	20	45	240

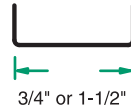
UPC labeling available upon request



PART NUMBER: SEE TEXT

COLD ROLLED CHANNEL

Phillips Cold Rolled Channel is a superior channel used for ceilings and laterally bracing studs. Also utilized for suspended ceilings and partition construction. Features tightly formed corners and consistent equal height legs to facilitate ease of installation. Phillips provides this product in both primed and hot-dipped galvanized. Phillips Cold Rolled Channel is manufactured from 16 gauge steel and is available in 3/4" (075U50) and 1-1/2" (150U50).



3/4" or 1-1/2"

Drawing not to scale

SIZES AND PACKAGING

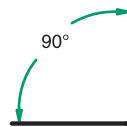
Cold Rolled Channel

Length	Pieces Per Bundle	Bundles Per Pallet	Feet Per Bundle
10'	10	40	100
16'	10	40	160
20'	10	40	200

UPC labeling available upon request

KNURLED ANGLE RUNNER 90° (UTILITY ANGLE)

Phillips Knurled Angle Runner is a multi-purpose steel 90° angle ideal for bridging and backing around perimeters of ceiling, as a vertical attachment where gypsum partitions intersect with other surfaces, and other applications. This product is used in caged beam construction as well as in place of studs and tracks in chase walls. Apply angles as floor and ceiling runners, plus dozens of other applications. Phillips offers this product in 25, 22 and 20 gauge steel. The standard sizes are 1-1/2" x 1-1/2" (150A150) and 2" x 2" (200A200); however, Phillips provides many other custom sizes to suit all needs. Packaging depends on your custom size, gauge and length. Standard length is 10'. For standard packaging information, please visit Phillips website at www.phillipsmfg.com. For Heavy Gauge Angles, see page 38.



90°

Drawing not to scale



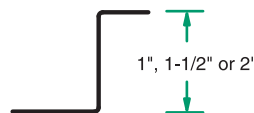
PART NUMBER: SEE TEXT



PART NUMBER: SEE TEXT

Z-FURRING CHANNEL

Phillips Z-Furring Channel is used to furr out interior masonry, poured concrete and other applications. This product supports insulation while providing a uniform plane for gypsum panel attachment. Phillips Z-Furring Channel is available in 1" (ZCH100), 1-1/2" (ZCH150) and 2" (ZCH200). Also, this product is available in 25, 22 and 20 gauge steel. Available without holes upon request.



1", 1-1/2" or 2"

Drawing not to scale



PART NUMBER: SEE TEXT

SIZES AND PACKAGING

Z-Furring Channel (All Sizes)

Length	Pieces Per Bundle	Bundles Per Pallet	Feet Per Bundle
20 Gauge			
10'	10	60	100
12'	10	60	120
22 & 25 Gauge			
10'	20	60	200
12'	20	60	240

UPC labeling available upon request

DRYWALL METAL FRAMING



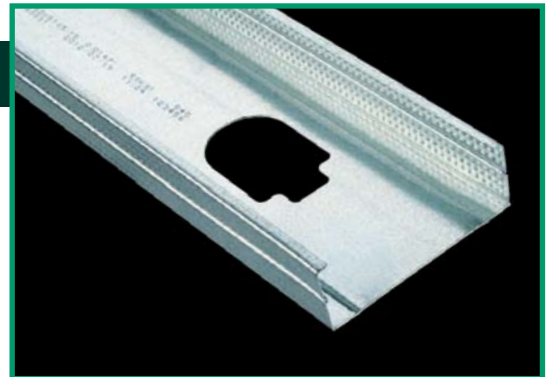
"Engineered to Perform"

Phillips ViperStud® Drywall Framing System:

- » High strength, flat steel, easy to plumb and mark
- » Durable, economical and light weight
- » Knurled flanges and ribs prevent screws from walking

ViperStud®

Phillips ViperStud® Drywall Framing System offers all the benefits of conventional flat steel studs with a design that utilizes a lighter steel. ViperStud® features a knurled flange and reinforcing ribs along with a flat stud design. Knurling is the pattern of small ridges formed on the flange to prevent screws from walking. Since knurling is only formed on one side of the steel, the stud stays flat, never compromising the strength or thickness of the steel. ViperRib® technology applies a reinforced ribbing over the web and flange of ViperStud®. The ribs provide added strength, are less prone to twist and creating "high-shoulders" when finishing gypsum board. Since ViperStud® is flat steel, it is easy to plumb and mark, make minor adjustments and use laser levels. This makes installation the same as conventional studs and is interchangeable with conventional framing components. No extra training or special fasteners are required for installation. Available in both 25 EQ and 20 EQ gauge steel. The standard widths for drywall metal studs are 1-5/8" (162VS125), 2-1/2" (250VS125), 3-5/8" (362VS125), 4" (400VS125) and 6" (600VS125). Standard lengths are 10', 12', 14', and 16'.

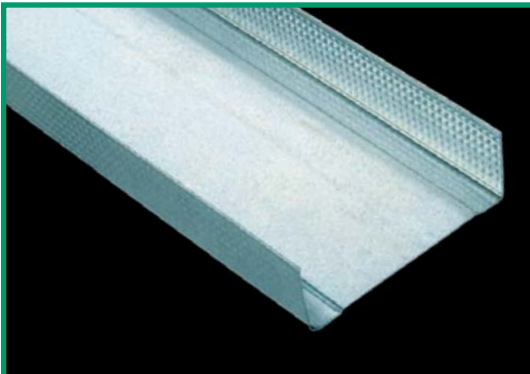


PART NUMBER: SEE TEXT



1-5/8", 2-1/2", 3-5/8", 4" or 6"

Drawing not to scale



PART NUMBER: SEE TEXT

ViperTrack®

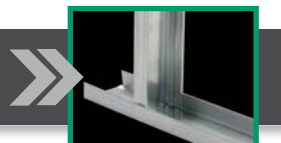
Phillips ViperTrack® is fastened at the floor and ceiling to support the steel studs. ViperTrack® features a knurled flange, which is the pattern of small ridges formed on the flange, to prevent screws from walking, without compromising the strength or thickness of the steel. ViperTrack® is fabricated from galvanized steel. ViperTrack25 has been extensively tested with Viper25 and Viper20 studs proving it is not necessary to use the same thickness track as stud. You can now submit a lighter gauge track with your Viper20 studs and reduce your cost. ViperTrack® is available in both 25 EQ and 20 EQ gauge steel. Hemmed track is available in 25 EQ gauge steel. The standard widths for metal tracks are 1-5/8" (16VT125), 2-1/2" (250VT125), 3-5/8" (362VT125), 4" (400VT125) and 6" (600VT125). Standard length is 10'.



1-5/8", 2-1/2", 3-5/8", 4" or 6"

Drawing not to scale

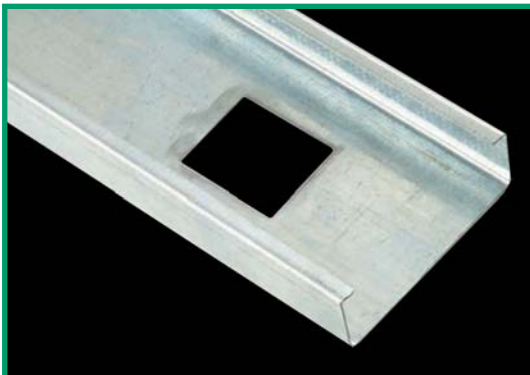
ViperStud® Drywall Framing System is available in regional markets. Ask your sales representative for more information.



"Engineered to Perform"

Phillips Conventional Interior Framing Products:

- » Roll-formed from corrosion resistant galvanized steel
- » Studs have pre-punched knockouts for easy installation
- » Available in regional markets



PART NUMBER: SEE TEXT

CONVENTIONAL METAL STUDS

Phillips conventional metal studs are "C" shaped metal studs fabricated from galvanized steel. The standard widths for drywall metal studs are 1-5/8" (162S125), 2-1/2" (250S125), 3-5/8" (362S125), 4" (400S125) and 6" (600S125). Standard lengths are 10', 12', 14', and 16'. Conventional metal studs are available in 25, 22, 20, 18 and 16* gauge steel. Packaging depends on your chosen length, width and gauge; ask your sales representative for more information. For Structural Studs, see page 37. Please visit Phillips website at www.phillipsmfg.com to download Phillips Conventional Metal Studs standard packaging sheets.

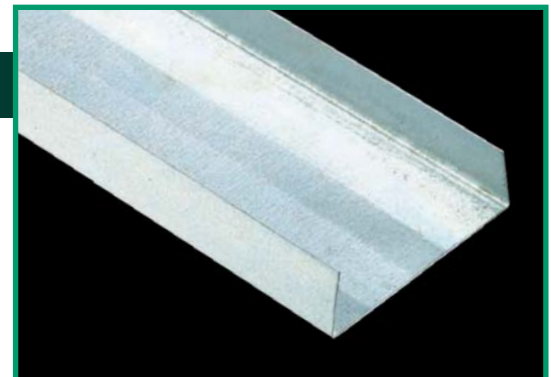


1-5/8", 2-1/2", 3-5/8", 4" or 6"

Drawing not to scale

CONVENTIONAL METAL TRACKS

Phillips conventional metal tracks are fastened at the floor and ceiling to support the steel studs. Metal tracks are channel shaped and fabricated from galvanized steel. Phillips offers conventional tracks in 25, 22, 20, 18 and 16* gauge steel. Hemmed track is available in 25 gauge steel. The standard widths for metal tracks are 1-5/8" (162T125), 2-1/2" (250T125), 3-5/8" (362T125), 4" (400T125) and 6" (600T125). Standard length is 10'. Packaging depends on your chosen length, width and gauge; please visit Phillips website at www.phillipsmfg.com to download Phillips Metal Tracks standard packaging sheets.



PART NUMBER: SEE TEXT



1-5/8", 2-1/2", 3-5/8", 4" or 6"

Drawing not to scale

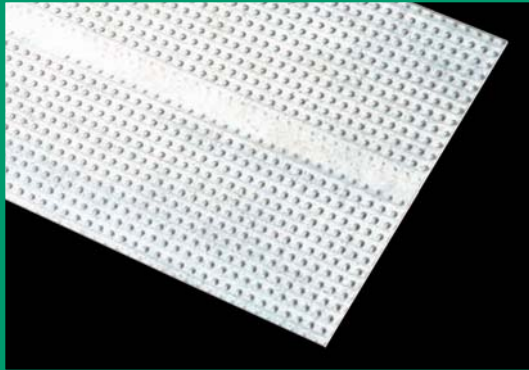
*1-5/8" available in 20, 22 and 25 gauge only

FLAT STRAP OR FLAT STOCK

"Engineered to Perform"

Phillips Flat Strap:

- » Deeply knurled to eliminate screw wandering
- » Variety of sizes to suit your needs



PART NUMBER: CUSTOM

FLAT STRAP (FLAT STOCK)

Phillips Flat Strap is a multi-purpose product used on a large number of applications. This product is commonly used as a backer plate to support shelves, cabinets, fixtures and handrails when installed to metal or wood framing. This product is deeply knurled for positive screw location and to eliminate wandering. Phillips offers this product in 25, 22, 20, 18 and 16 gauge steel. This product is readily available in a variety of widths and lengths; ask your sales representative for more information. Standard packaging is 250 pieces per pallet.

» **PHILLIPS TOP PRIORITY IS CUSTOMER SATISFACTION INCLUDING ON-TIME DELIVERIES**





"Engineered to Perform"

Phillips Structural Studs & Tracks:

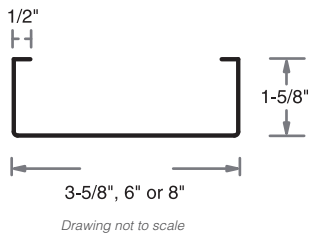
- » Stock stud program great for fill-ins
- » Call 800.822.5055 for more information



PART NUMBER: SEE TEXT

STRUCTURAL STUDS

Phillips Structural Studs are "C" shaped studs fabricated from galvanized steel. Phillips offers structural studs in 16, 18 and 20 gauge steel. The standard widths for these load bearing studs are 3-5/8" (362S162), 6" (600S162) and 8" (800S162). Stock stud lengths are 10', 12', 14', 20' and 24'. Packaging depends on your chosen length, width and gauge. Other stud sizes may be available than what is depicted below; ask your sales representative for more information. For non-load bearing interior studs, please see pages 34-35 for more information.

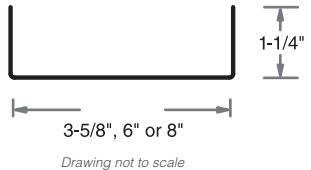


STRUCTURAL TRACKS

Phillips Structural Tracks are channel shaped and fabricated from galvanized steel. Phillips offers tracks in 16, 18 and 20 gauge steel. The standard widths for structural tracks are 3-5/8" (362T125), 6" (600T125) and 8" (800T125). Stock track length is 10'. Packaging depends on your chosen length, width and gauge. Other track leg sizes are available; ask your sales representative for more information. Metal Tracks for interior light-gauge framing are also available; see pages 34-35 for more information.



PART NUMBER: SEE TEXT

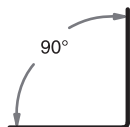




PART NUMBER: SEE TEXT

HEAVY GAUGE ANGLE RUNNER 90° (UTILITY ANGLE)

Phillips Heavy Gauge Angle 90° or Utility Angle is used in a variety of applications including corner reinforcement, connection strut or angle, concrete pour stop, roof ridge angles and others. Phillips offers this product in 20, 18, 16 and 14 gauge steel. The standard sizes for this product are 2" x 2" (200A200) and 3" x 3" (300A300); however, Phillips provides other custom sizes including uneven legs to suit all needs. Standard length is 10'. Most available custom sizes of 20 and 18 gauge angle feature knurling as pictured. For lighter gauge angle products, please see Phillips Knurled Angle Runner 90° on page 33. For standard packaging information, please visit Phillips website at www.phillipsmfg.com.



Drawing not to scale

COLD ROLLED CHANNEL

Phillips Cold Rolled Channel is a superior channel used for ceilings and laterally bracing studs. Also utilized for suspended ceilings and partition construction. Features tightly formed corners and consistent equal height legs to facilitate ease of installation. Phillips provides this product in both primed and hot-dipped galvanized to suit all needs. Phillips Cold Rolled Channel is manufactured from 16 gauge steel and is available in 3/4" (075U50) and 1-1/2" (150U50).



PART NUMBER: SEE TEXT



3/4" or 1-1/2"
Drawing not to scale

SIZES AND PACKAGING

Cold Rolled Channel

Length	Pieces Per Bundle	Bundles Per Pallet	Feet Per Bundle
10'	10	40	100
16'	10	40	160
20'	10	40	200

UPC labeling available upon request



PART NUMBER: CUSTOM

Examples pictured; other shapes available

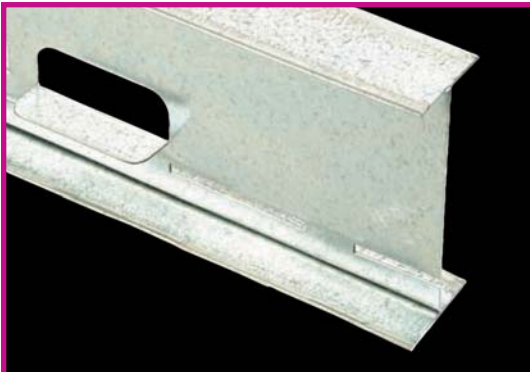
CUSTOM FABRICATED SHAPES

Phillips custom fabricates nearly every shape, bend, angle or specialty framing component to your exact specification. Custom parts include corner angles, long and uneven leg tracks, furring channels and more. To ensure proper fabrication, Phillips requires a detailed, fully dimensioned part drawing at time of order placement. Standard length is 10'. Packaging depends on custom size, gauge and length.

"Engineered to Perform"

Phillips I-Stud for Fire Rated Cavity Shaftwall/Stairwell Assemblies:

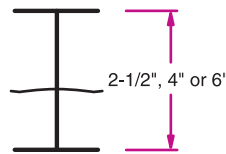
- » Simple 2-piece system (unlike competitors 3-piece system)
- » Tested in accordance with following ASTM standards:
 - » ASTM E-119 Fire Endurance Ratings
 - » ASTM E-90 Sound Transmission Loss
 - » ASTM E-72 Transverse Load Test
- » Listed with following nationally recognized evaluation services:
 - » ICC ES, Inc. Legacy Reports: 89-35.01, 95-25B, ER-3579, ER-4924
 - » UL Designs: U497, U498, U499, V433
 - » Intertek (Warnock Hersey) Designs: PMC/WA 60-01, PMC/WA 120-01, PMC/WA 120-02, PMC/WA 180-01
- » Additional designs and test results available at:
 - » www.PHILLIPSmfg.com
 - » GA-600 Gypsum Association Fire Resistance Design Manual



PART NUMBER: SEE TEXT

I-STUD

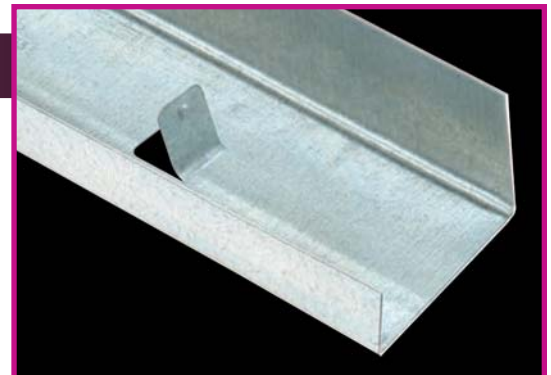
Phillips exclusive I-Stud is used with Tabbed J-Track for framing cavity shaftwalls, vertical chases and area separation walls. The tabs retain 1" shaftliner. This simplified assembly is manufactured from galvanized steel providing a lightweight advantage over masonry systems. This cost saving system is a proven performer. The available widths are 2-1/2" (25I-PHS), 4" (4I-PHS) and 6" (6I-PHS). Phillips offers this product in both 25 and 20 gauge steel for your convenience.* Packaging depends on your chosen length, width and gauge; ask your sales representative for more information. For standard packaging information, please visit Phillips website at www.phillipsmfg.com.



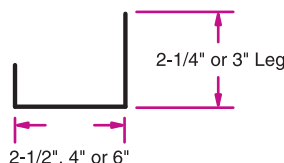
Drawing not to scale

TABBED J-TRACK

Phillips Tabbed J-Track is used with Phillips I-Stud at floor and ceiling cavity shaftwalls, vertical chases and area separation walls. The tabs retain a 1" shaftliner. J-Track is manufactured with galvanized steel. Phillips Tabbed J-Track is available with either a 2-1/4" or 3" leg. 2-1/4" leg is available in both 25 and 20 gauge steel and 3" leg is available in 20 gauge steel. Phillips provides widths of 2-1/2" (250J), 4" (400J) and 6" (600J) to suit all needs.* Packaging depends on your chosen length, width, leg size and gauge; ask your sales representative for more information. For standard packaging information, please visit Phillips website at www.phillipsmfg.com.



PART NUMBER: SEE TEXT



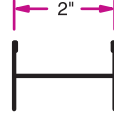
Drawing not to scale

*6" available in 20 gauge only

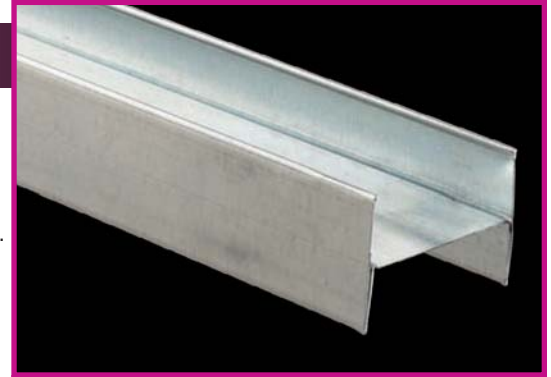
AREA SEPARATION WALL

HEMMED H-STUD

Phillips Hemmed H-Stud is a key framing component and adds structural integrity to area separation wall assemblies. This product features 2" wide vertical members which are inserted into the U-Track for framing solid partition separation walls. This product is manufactured to length for your convenience. Phillips Hemmed H-Stud follows nationally recognized evaluation service ICC ES, Inc. Legacy Report 90-26.01.



Drawing not to scale



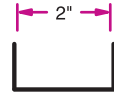
PART NUMBER: 2HH-25HDG



PART NUMBER: 2U-25HDG

U-TRACK

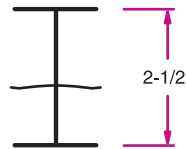
Phillips U-Track is used at the top and bottom of vertical panels to secure shaftliner panels and H-Studs in area separation wall assemblies. U-Track is fastened at the floor and ceiling to support the H-Studs. This product has a 2" width.



Drawing not to scale

ASW I-STUD

Phillips ASW I-Studs are a cost effective alternative to other shaftwall systems in non-specified applications. For cavity shaftwall systems see Phillips I-Stud on page 39. ASW I-Studs are an easy-to-assemble area separation wall used in non-load bearing applications. This product features a 2-1/2" width and is manufactured from 25 gauge galvanized steel. Phillips ASW I-Studs are used with Phillips Tabbed J-Track; see page 39 for details.



Drawing not to scale



PART NUMBER: 25ASW25HDG



PART NUMBER: ASWCLIP

ASW CLIPS

Phillips ASW Clips are attached to the wood or steel framing at vertical steel framing stud/ wood framing intersections. ASW Clips are 2" wide with 2" x 2-1/2" legs. Packaging is 500 pieces per carton.

SIZES AND PACKAGING

Hemmed H-Stud

Length	Pieces Per Bundle	Bundles Per Pallet	Feet Per Bundle
8'	10	55	80
10'	10	55	100
12'	10	55	120

U-Track

10'	10	54	100
-----	----	----	-----

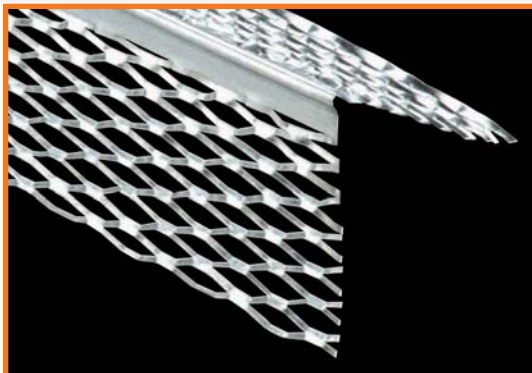
UPC labeling available upon request

SIZES AND PACKAGING

ASW I-Stud

Length	Pieces Per Bundle	Bundles Per Pallet	Feet Per Bundle
8'	10	50	80
10'	10	50	100
12'	10	50	120

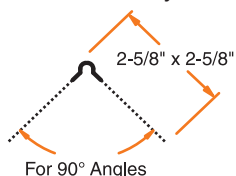
UPC labeling available upon request



PART NUMBER: 01ECB

#1 EXPANDED CORNER BEAD

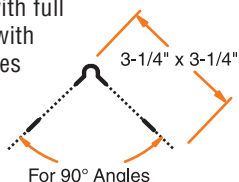
Phillips #1 Expanded Corner Bead is designed to provide strong corner reinforcement for conventional plaster applications. A solid metal nose provides a straight, rigid ground, and the 2-5/8" flanges can be easily flexed over irregular, uneven surfaces. Easily install using standard industry practice. Plaster keys near solid nose provide reinforcement where needed most to ensure straight corners. Phillips offers this product in both galvanized steel and zinc.



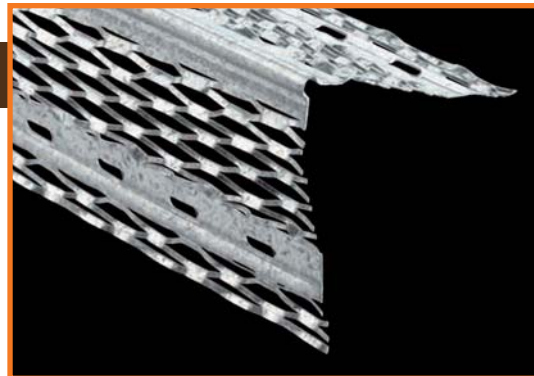
Drawing not to scale

#33 WIDE EXPANDED FLANGE BEAD

Phillips #33 Wide Expanded Flange Bead provides additional rigidity and strength with its reinforced flanges. This product is for use on masonry, beams and column fireproofing. Combination of expanded flanges and pronounced bead nose ensures successful corner alignment and efficient plaster keying from edge to nose. Manufactured with full stiffening ribs to enhance durability. This product is produced with galvanized steel (zinc available special order, minimum quantities may apply).



Drawing not to scale



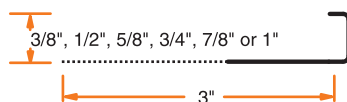
PART NUMBER: 33WFC



PART NUMBER: 66EFC

#66 EXPANDED FLANGE SQUARE CASING

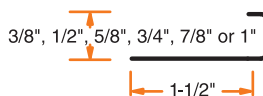
Phillips #66 Expanded Flange Square Casing is designed as a universal plaster stop used at wall terminations, door and window openings and intersections. This product protects edges from damage and helps cover shrinkage cracks. The expanded flange grounds 3/8", 1/2", 5/8", 3/4", 7/8" or 1" (1-1/4" and 1-1/2" special order, minimum quantities may apply). Phillips offers #66 Expanded Flange Square Casing in both galvanized steel or zinc. Also available with weep holes.



Drawing not to scale

#66 SHORT FLANGE SQUARE CASING

Phillips #66 Short Flange Square Casing provides a short 90° angle return at plaster surface which serves as a plastering stop to ensure a neat finish. Phillips #66 Short Flange Square Casing's perforated flanges aid attachment and plaster keying. This product features short and solid flanges for those who prefer it. This product is available with 3/8", 1/2", 5/8", 3/4", 7/8" or 1" grounds (1-1/4" and 1-1/2" special order, minimum quantities may apply). Available with either galvanized steel or zinc (minimum quantities may apply for zinc). Also available with weep holes.



Drawing not to scale



PART NUMBER: 66SFC

SIZES AND PACKAGING

#66 Short & Expanded Flange (Standard Sizes)

Length	Pieces Per Carton	Cartons Per Pallet	Feet Per Carton
10'	30	42	300

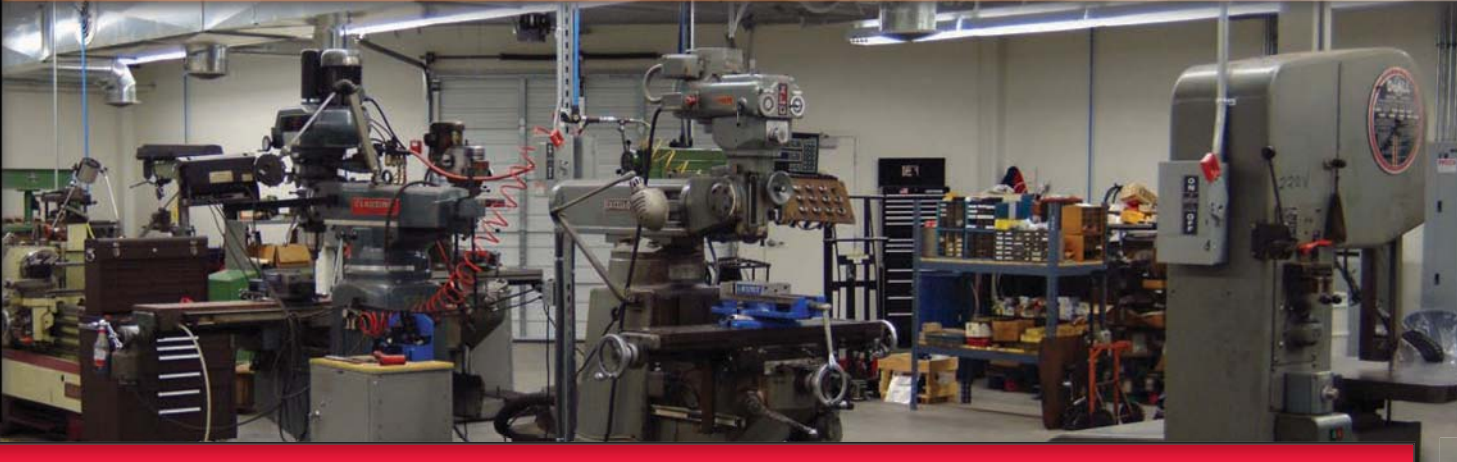
UPC labeling available upon request

SIZES AND PACKAGING

#1 & #33

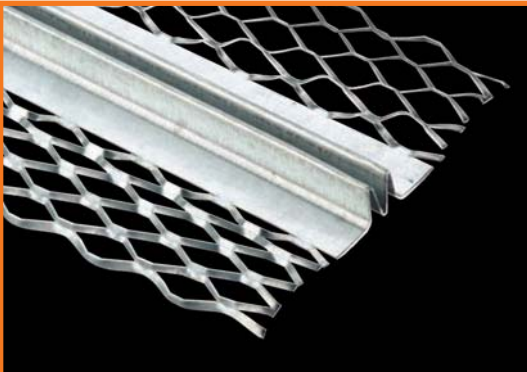
Length	Pieces Per Carton	Cartons Per Pallet	Feet Per Carton
8'	40	28	320
9'	30	28	270
10'	30	28	300
12'	30	28	360

UPC labeling available upon request



"Engineered to Perform"

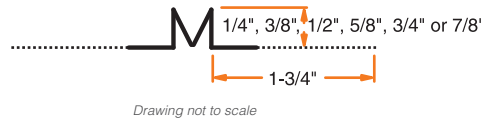
Phillips uses the latest technologies and equipment to ensure our products are "Engineered to Perform"



PART NUMBER: 15ECJ

#15 DOUBLE V EXPANSION JOINT

Phillips #15 Double V Expansion Joint relieves the stresses of expansion and contraction associated with natural shrinkage during stucco curing and basic thermal changes. Phillips #15 minimizes cracking in large plaster areas and provides ground to assure proper plaster or stucco thickness. Expanded flanges allow for quality keying. Phillips offers this product in 1/4", 3/8", 1/2", 5/8", 3/4" and 7/8". Phillips #15 is available in either galvanized steel or zinc.

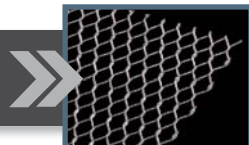


SIZES AND PACKAGING

#15 Double V (1/4", 3/8")			
Length	Pieces Per Carton	Cartons Per Pallet	Feet Per Carton
10'	24	42	240
#15 (1/2", 5/8", 3/4", 7/8")			
10'	24	40	240

UPC labeling available upon request

Phillips Metal Lath applications work great in stucco work. See page 47 for details.



"Engineered to Perform"

Phillips Stucco, Veneer & Plaster Accessories:

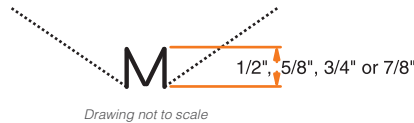
- » Strong, durable finishes resistant to dents, gouges, abrasions and scuffs
- » Expanded flanges and rigid pronounced edges provide quality keying, exacting grounds and superior bonding
- » Control joints minimize cracking



PART NUMBER: 30EJ

#30 DOUBLE V CORNER EXPANSION JOINT

Phillips #30 Double V Inside Corner Expansion Joint, similar in design to the #15 Double V, serves to relieve stress and control cracks at wall-to-wall junctions or where different planes abut. Expanded flanges allow for quality keying. Phillips #30 is available in 1/2", 5/8", 3/4" or 7/8" with your choice of galvanized steel or zinc.



SIZES AND PACKAGING

#30 (All Sizes)

Length	Pieces Per Carton	Cartons Per Pallet	Feet Per Carton
10'	24	40	240

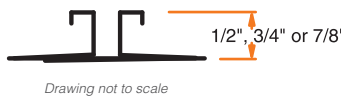
UPC labeling available upon request

#40 EXPANSION JOINT

Phillips #40 Expansion Joint controls stresses in walls, ceilings, abutments, columns and partitions. Material will expand and contract from 1/4" to 5/8" openings. This two-piece versatile product works great with a variety of applications. Phillips offers this product in 1/2", 3/4" and 7/8" ground heights for your convenience with your choice of galvanized steel or zinc.



PART NUMBER: 40ECJ



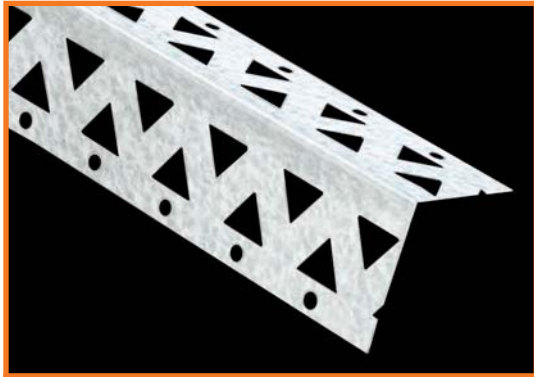
SIZES AND PACKAGING

#40 (All Sizes)

Length	Pieces Per Carton	Cartons Per Pallet	Feet Per Carton
10'	15	25	150

UPC labeling available upon request

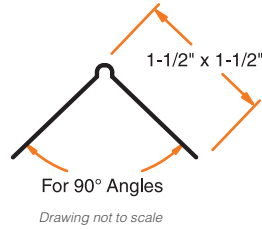
VENEER BEADS AND TRIMS



PART NUMBER: KALZRC

Kal-Korner® BEAD

Phillips Kal-Korner® bead is formed of galvanized steel to protect exterior corners with veneer plastering. Install using standard industry practice. This product is an alternative to the mini veneer bead. Kal-Korner® is a proven durable performer and can also be used in interior plaster applications.



SIZES AND PACKAGING

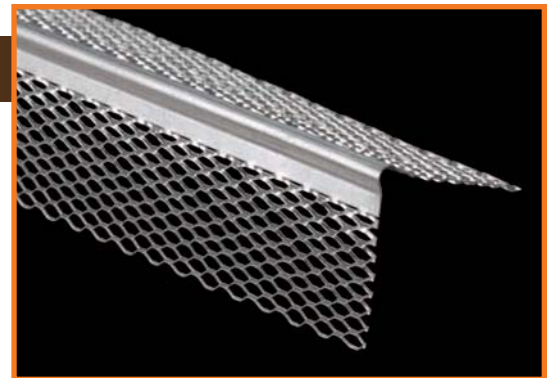
Kal-Korner® Bead

Length	Pieces Per Carton	Cartons Per Pallet	Feet Per Carton
8'	80	28	640
9'	60	28	540
10'	60	28	600
12'	60	28	720

UPC labeling available upon request

MINI VENEER BEAD

Phillips Mini Veneer Bead features fine mesh formed from hot-dipped galvanized steel to ensure clean, straight edges with veneer plastering. This product provides strong, durable finishes resistant to dents, gouges, abrasions and scuffs. Fully expanded flanges and rigid pronounced edges provide quality keying, superior bonding and eliminate shadowing. Install using standard industry practice.



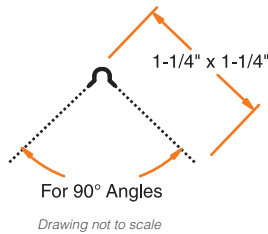
PART NUMBER: EVCHDG

SIZES AND PACKAGING

Mini Veneer Bead

Length	Pieces Per Carton	Cartons Per Pallet	Feet Per Carton
8'	60	25	480
10'	60	25	600

UPC labeling available upon request



"Engineered to Perform"

Phillips gripSTIK® vinyl products work great for interior veneer applications.

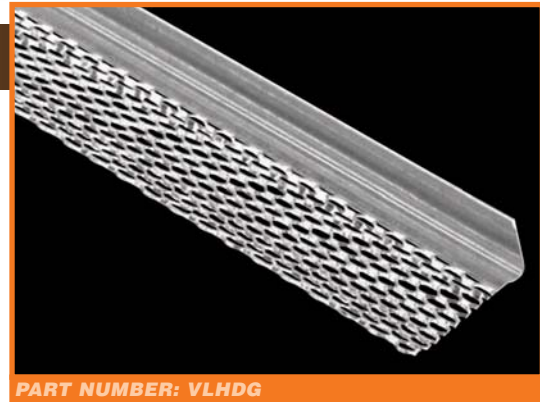
See pages 13-21 for available gripSTIK® vinyl products.



Vinyl Corner Bead

L-TRIM CASING BEAD

Phillips veneer L-Trim Casing Bead finishes edges at door and window jambs and features a hemmed edge for easy installation. This product features fully expanded mini-mesh for quality keying. Phillips offers this galvanized steel product in both 1/2" and 5/8" for your convenience.



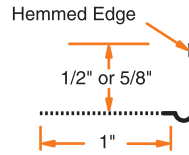
PART NUMBER: VLHDG

SIZES AND PACKAGING

L-Trim (All Sizes)

Length	Pieces Per Carton	Cartons Per Pallet	Feet Per Carton
10'	50	60	500

UPC labeling available upon request



Drawing not to scale



PART NUMBER: VJHDG

J-TRIM CASING BEAD

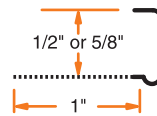
Phillips veneer J-Trim Casing Bead finishes edges at door and window jambs by slipping over the edge of plaster base. This galvanized steel product features a mini-mesh flange for plaster keying. Phillips offers this galvanized steel product in both 1/2" and 5/8" to suit many needs.

SIZES AND PACKAGING

J-Trim (All Sizes)

Length	Pieces Per Carton	Carton Per Pallet	Feet Per Carton
10'	50	63	500

UPC labeling available upon request



Drawing not to scale

093 EXPANSION CONTROL JOINT

Phillips 093 zinc expansion control joints are manufactured from the highest quality solid zinc coil stock for superior corrosion resistance. An excellent product for interior or exterior applications, Phillips 093 expansion control joints relieve stresses of expansion and contraction across ceilings and wall areas. The opening is protected by plastic tape which can be removed after joint compound or plaster has been applied. Perforated flanges provide for excellent joint compound adhesion as the joint compound penetrates through the flanges to the wallboard for long lasting adhesion. The perforated flanges also allow for faster drying. This product fits standard 1/4" openings.



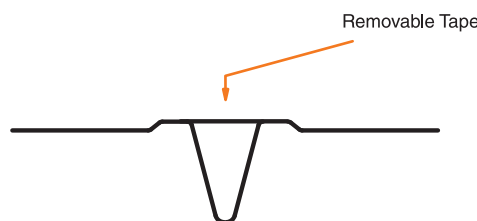
PART NUMBER: ECJ093ZNC

SIZES AND PACKAGING

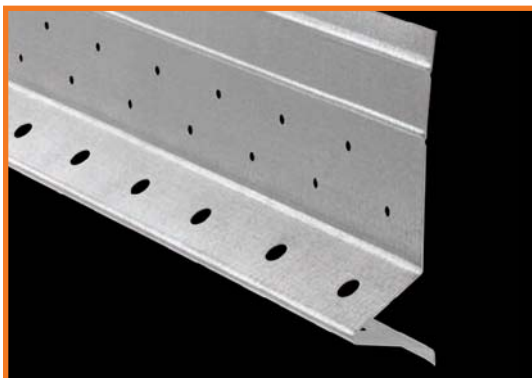
093 Expansion Control Joint

Length	Pieces Per Carton	Cartons Per Pallet	Feet Per Carton
10'	25	20	250

UPC labeling available upon request



Drawing not to scale



PART NUMBER: WSHDG

#7 FOUNDATION WEEP SCREED

Phillips #7 Foundation Weep Screed provides a stucco stop and screed for wood and masonry in exterior stucco applications. This product features a 3-1/2" nailing flange which serves as a straight-edge stop at the sill plate line and flashing when water-resistant paper or paperbacked lath is installed over flange. Phillips #7 Foundation Weep Screed is punched with holes which enable keying as well as moisture weeping. This galvanized steel product is available in 1/2" (WS5HDG), 7/8" (WS8HDG) and 1-3/8" (WS13HDG) grounds (5/8", 3/4" and 1" special order, minimum quantities may apply).* The 7/8" product is typically used with 7/8" three coat cement stucco systems while the 1-3/8" product is typically used with one inch foam on one coat plaster systems or in exterior insulation and finish systems.



1/2", 7/8" or 1-3/8"

Drawing not to scale

SIZES AND PACKAGING

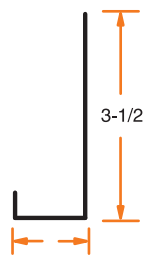
#7 Foundation Weep Screed*

Length	Pieces Per Bundle	Bundles Per Pallet	Feet Per Bundle
10'	10	50	100

UPC labeling available upon request

J-WEEP

Phillips J-Weep is a versatile product used in several applications. J-Weep is commonly used as a casing bead or plaster stop in stucco applications. The punched weep holes allow for usage as a sill weep screed in exterior stucco applications. This product features a 3-1/2" nailing flange meeting applicable code requirements. Perforated flanges aid attachment and plaster keying. This galvanized steel product is available in 3/8" (JW3HDG), 1/2" (JW5HDG), 7/8" (JW8HDG), and 1-3/8" (JW13HDG) grounds (3/4" special order, minimum quantities may apply).*



3/8", 1/2", 7/8" or 1-3/8"

Drawing not to scale



PART NUMBER: JWHDG

SIZES AND PACKAGING

J-Weep

Length	Pieces Per Bundle	Bundles Per Pallet	Feet Per Bundle
10'	10	50	100

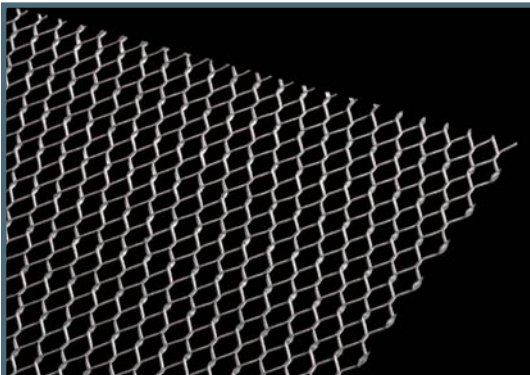
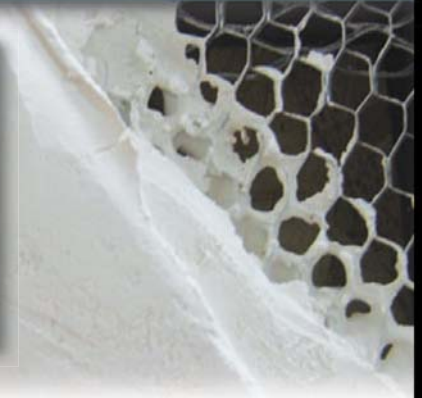
UPC labeling available upon request

*Packaging of special order grounds may vary

"Engineered to Perform"

Phillips Metal Lath:

- » Manufactured to specified weight with hot-dipped galvanized steel
- » Use with complete confidence in all applications



PART NUMBER: SEE TEXT

DIAMOND MESH LATH

Phillips Diamond Mesh Lath is used as a plaster base and reinforcement on almost all types of walls and ceilings, over wood or steel framing, flat or curved surfaces. The large number of openings provide for better stucco bonding in both pumped and troweled applications. This product is widely used as a reinforcement for base coat in ceramic tile work. This product is manufactured to specified weight with hot-dipped galvanized steel. Available in 1.75 (175GLHDG), 2.0 (20GLHDG), 2.5 (25GLHDG) and 3.4 (34GLHDG).

SIZES AND PACKAGING

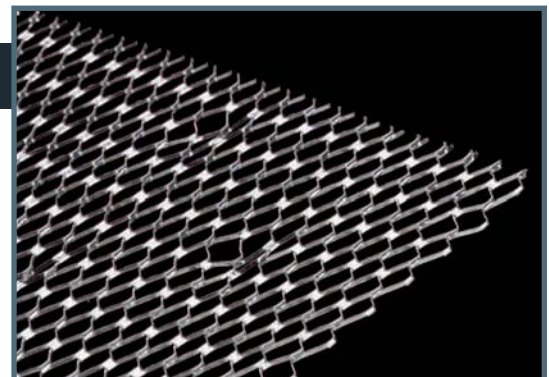
Diamond Mesh Lath

Std Wt./ Sq. Yd.	Sheet Size	Pieces Per Bundle	Bundles Per Pallet	Sq. Yds. Per Bundle
1.75	27" x 97"	10	50	20
2.00	27" x 97"	10	50	20
2.50	27" x 97"	10	50	20
3.40	27" x 97"	10	50	20

UPC labeling available upon request

SELF-FURRING DIAMOND MESH LATH

Phillips Self-Furring Diamond Mesh Lath is used extensively in stucco work as plaster reinforcement over interior masonry walls as well as in steel column fireproofing. It is also widely used as a reinforcement for base coat in ceramic tile work. Self-Furring Diamond Mesh Lath is used over solid surfaces like concrete, cement board, column fireproofing, masonry and replastering over old surfaces. The self-furring dimples hold the metal lath 1/4" away from the surface to be plastered. The dimpled raised lath substrate provides superior mechanical bond over solid surfaces. This product is easily shaped for curved or contoured surfaces. The self-furring nature of the product helps applicators maintain plaster depths. This product features a hot-dipped galvanized finish. To maintain the designed furring characteristics, fasteners must be applied within the dimple cavity. Available in 1.75 (175SLHDG), 2.0 (20SLHDG), 2.5 (25SLHDG) and 3.4 (34SLHDG).



PART NUMBER: SEE TEXT

SIZES AND PACKAGING

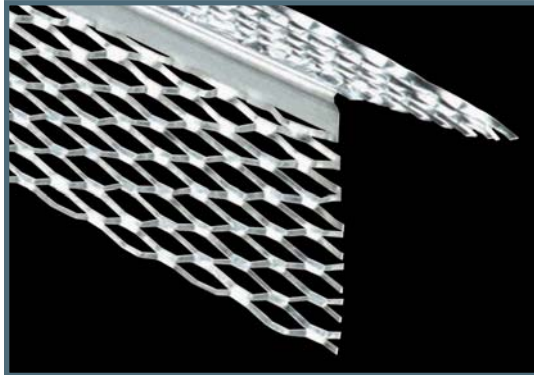
Self-Furring Mesh Lath

Std Wt./ Sq. Yd.	Sheet Size	Pieces Per Bundle	Bundles Per Pallet	Sq. Yds. Per Bundle
1.75	27" x 97"	10	25	20
2.00	27" x 97"	10	25	20
2.50	27" x 97"	10	25	20
3.40	27" x 97"	10	25	20

UPC labeling available upon request

"Engineered to Perform"

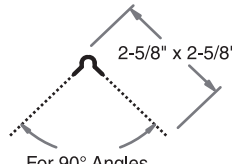
For complete offering of Stucco, Veneer & Plaster Beads & Trims see pages 41-46



PART NUMBER: 01ECB

#1 EXPANDED CORNER BEAD

Phillips #1 Expanded Corner Bead is designed to provide strong corner reinforcement for conventional plaster applications. A solid metal nose provides a straight, rigid ground, and the 2-5/8" flanges can be easily flexed over irregular, uneven surfaces. Easily install using standard industry practice. Plaster keys near solid nose provide reinforcement where needed most to ensure straight corners. Phillips offers this product in both galvanized steel and zinc.

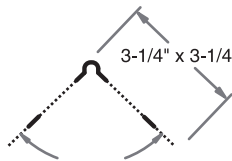


For 90° Angles

Drawing not to scale

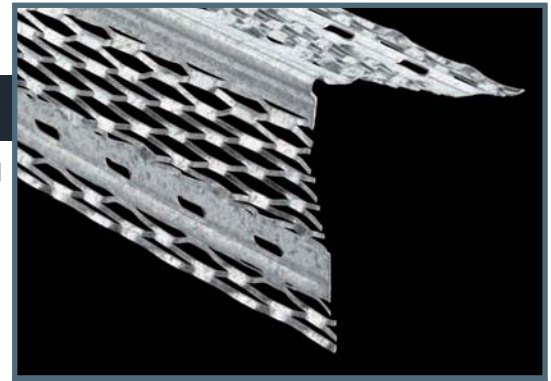
#33 WIDE EXPANDED FLANGE BEAD

Phillips #33 Wide Expanded Flange Bead provides additional rigidity and strength with its reinforced flanges. This product is for use on masonry, beams and column fireproofing. Combination of expanded flanges and pronounced bead nose ensures successful corner alignment and efficient plaster keying from edge to nose. Manufactured with full stiffening ribs to enhance durability. This product is produced with galvanized steel (zinc available special order, minimum quantities may apply).

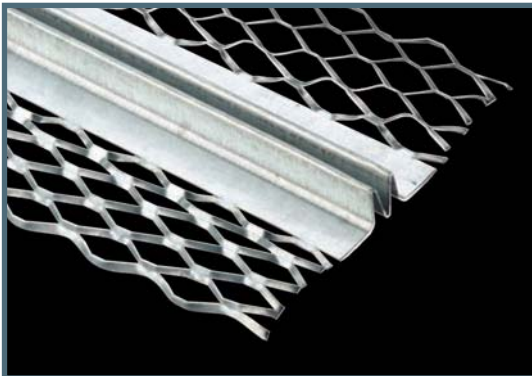


For 90° Angles

Drawing not to scale



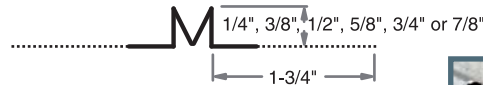
PART NUMBER: 33WFC



PART NUMBER: 15ECJ

#15 DOUBLE V EXPANSION JOINT

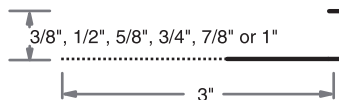
Phillips #15 Double V Expansion Joint relieves the stresses of expansion and contraction associated with natural shrinkage during stucco curing and basic thermal changes. Phillips #15 minimizes cracking in large plaster areas and provides ground to assure proper plaster or stucco thickness. Expanded flanges allow for quality keying. Phillips provides this product in 1/4", 3/8", 1/2", 5/8", 3/4" and 7/8". Phillips #15 is available in either galvanized steel or zinc.



Drawing not to scale

#66 EXPANDED FLANGE SQUARE CASING

Phillips #66 Expanded Flange Square Casing is designed as a universal plaster stop used at wall terminations, door and window openings and intersections. This product protects edges from damage and helps cover shrinkage cracks. The expanded flange grounds 3/8", 1/2", 5/8", 3/4", 7/8" or 1" (1-1/4" and 1-1/2" special order, minimum quantities may apply). Phillips offers #66 Expanded Flange in both galvanized steel or zinc. Also available with weep holes.

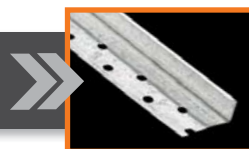


Drawing not to scale



PART NUMBER: 66EFC

#66 Short Flange Square Casing also available. See page 41 for details.



COLOR GUIDE

Galvanized

White

Brown

Bronze

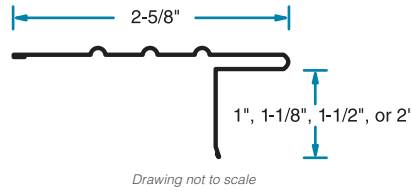
Black

Tan

Actual colors may vary

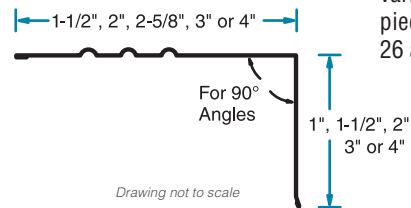
STYLE D ROOF EDGE

Phillips EDGEmaster® Style D Roof Edge is designed to protect and cover the exposed edge of the roof line. This product helps prevent water backup under the shingles and protects roofing from water damage along the entire eave. This product features hemmed edges for easy installation. Available in a variety of sizes and colors (see color guide). Packaging is 25 pieces per carton and 10' is standard length. Available in both 26 and 28 gauge.



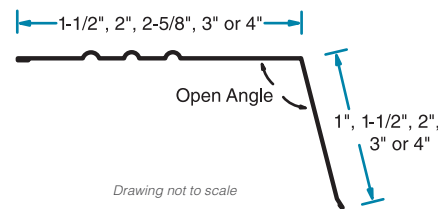
ROOF EDGE

Phillips EDGEmaster® Roof Edge is designed to protect and cover the exposed edge of the roof line. This product helps prevent water backup under the shingles and protects roofing from water damage along the entire eave. Available in a variety of sizes; visit www.phillipsmfg.com for a listing of part numbers. This product features hemmed edges for easy installation. Available in a variety of sizes and colors (see color guide). Packaging is 25 pieces per carton and 10' is standard length. Available in both 26 and 28 gauge.



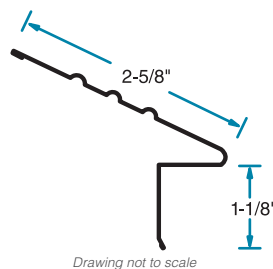
GUTTER APRON (OPEN ANGLE)

Phillips EDGEmaster® Gutter Apron (Open Angle) is used to direct water into the gutter system by directing rain water run-off to drip away from fascia. This product is installed over the roof edge and extends into the gutter. Phillips Gutter Apron is open angle or designed for roof edge angles greater than 90 degrees. Available in a variety of sizes; visit www.phillipsmfg.com for a listing of part numbers. This product features hemmed edges for easy installation. Available in a variety of sizes and colors (see color guide). Packaging is 25 pieces per carton and 10' is standard length. Available in both 26 and 28 gauge.



EAVE DRIP

Phillips EDGEmaster® Eave Drip is designed to direct water into the gutter system by directing rain water run-off to drip away from fascia. This product is installed over the roof edge and extends into the gutter. This product features hemmed edges for easy installation. Available in a variety of sizes and colors (see color guide). Packaging is 25 pieces per carton and 10' is standard length. Available in both 26 and 28 gauge.



ROOF FLASHING



ROLL FLASHING

Phillips EDGEmaster® Roll Flashing is used for custom flashing and do-it-yourself projects. This product adds a customized look to any dormer or flashing piece. Available in a variety of colors (see color guide). Up to 24" width available. Standard widths are 24" (RF2400), 20" (RF2000), 18" (RF1800), 16" (RF1600), 14" (RF1400), 12" (RF1200), 10" (RF1000), 8" (RF800), 6" (RF600) and 4" (RF400). 10', 25' and 50' length rolls available.



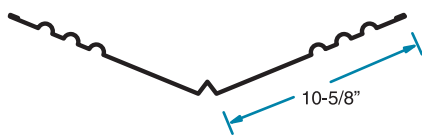
PART NUMBER: SEE TEXT



PART NUMBER: SEE TEXT

W-VALLEY

Phillips EDGEmaster® W-Valley is used in the roof valley area to channel water down into the gutters. This product features a small ridge in the middle to prevent run-off rain from running down one side of the roof and splashing up under shingles on the opposing side. This product is available in 24" width (WV24) as shown; standard width of 18" (WV18) and 20" (WV20) also available. Available in a variety of colors (see color guide). This product features hemmed edges for easy installation. Standard packaging is 250 pieces per pallet.

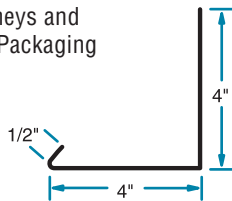


Drawing not to scale

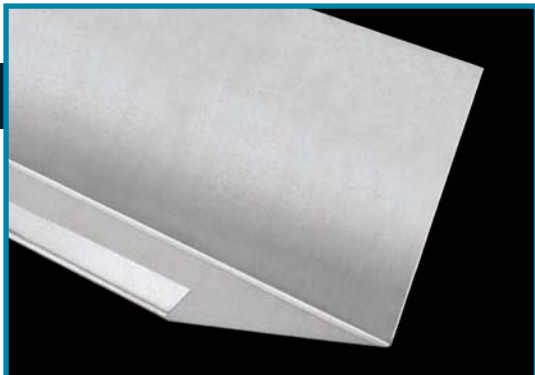
24" shown; other sizes available

TILE PAN (SIDEWALL FLASHING)

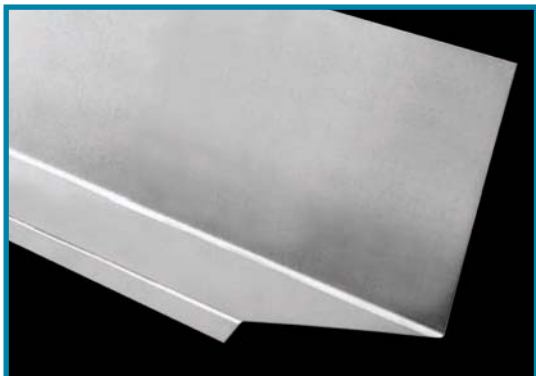
Phillips EDGEmaster® Tile Pan works great as flashing around chimneys and other applications. Available in a variety of colors (see color guide). Packaging is 10 pieces per bundle.



Drawing not to scale



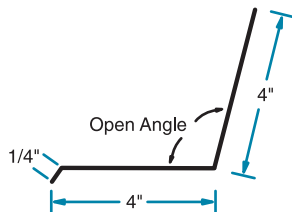
PART NUMBER: TP4X4



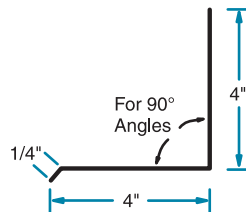
PART NUMBER: SEE TEXT

WALL (DORMER) FLASHING

Phillips EDGEmaster® Wall (Dormer) Flashing is designed to prevent the entry of water into the wall. Wall flashing is typically found at interruptions in the wall, such as windows and points of structural support. This product works great to prevent top edge of window or door openings from water infiltration. Wall (Dormer) Flashing is available in open angle (WF120) and regular (WF90 - for 90° angles). Available in a variety of sizes and colors (see color guide). Packaging is 10 pieces per bundle.

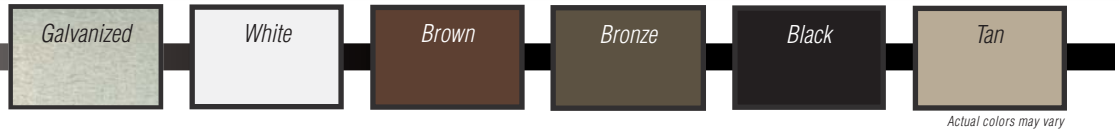


Drawing not to scale



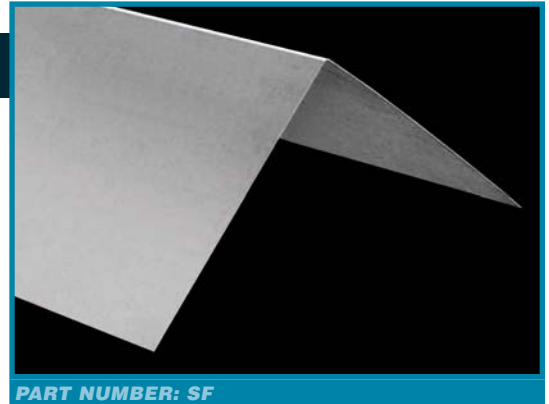
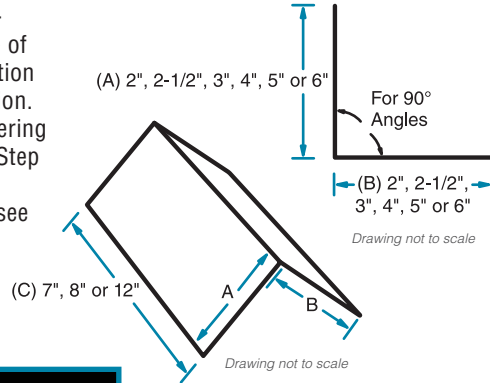
Drawing not to scale

COLOR GUIDE

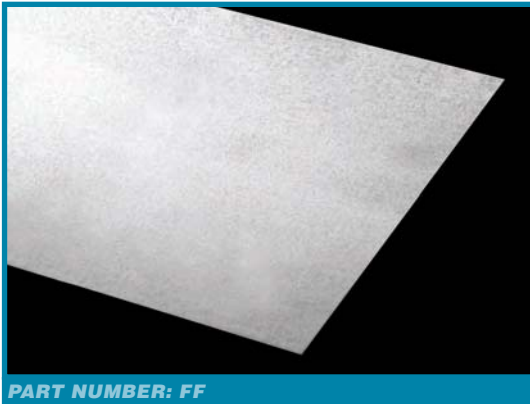


STEP FLASHING (PRE-BENT FLASHING SHINGLE)

Phillips EDGEmaster® Step Flashing (Pre-Bent Flashing Shingle) is used on the side of a shingle when it meets a vertical termination such as a wall, chimney or other termination. The product helps prevent water from entering between the shingle and the termination. Step Flashing is pre-bent for easy installation. Available in a variety of sizes and colors (see color guide). Packaging is 10 pieces per bundle and 100 per carton.



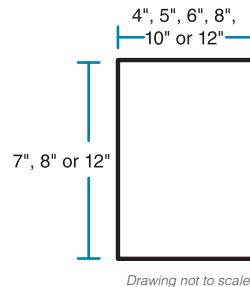
PART NUMBER: SF



PART NUMBER: FF

FLAT FLASHING SHINGLES

Phillips EDGEmaster® Flat Flashing Shingles are utility roofing metal products used in a variety of flashing applications. This product can be bent on the job to fit custom or fill in flashing requirements. Flat Flashing Shingles are available in a variety of sizes and colors (see color guide). Packaging is 10 pieces per bundle and 100 per carton.



Z-FLASHING

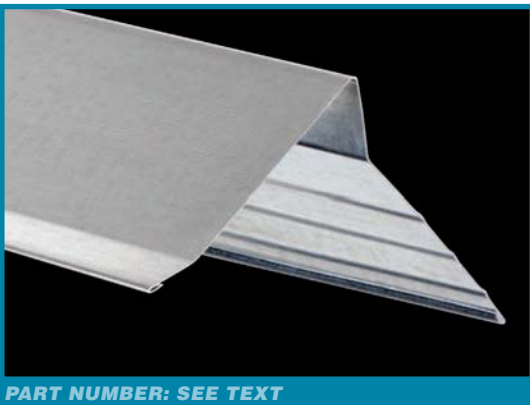
Phillips EDGEmaster® Z-Flashing is commonly used for preventing water penetration behind exterior siding and other residential applications. Available in a variety of colors (see color guide). Phillips offers this product in 7/16" and a variety of other sizes; ask your sales representative for details on sizes offered. Packaging is 10 pieces per bundle.



7/16" shown; other sizes available



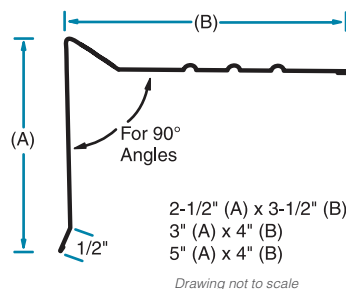
PART NUMBER: ZF



PART NUMBER: SEE TEXT

GRAVEL STOP

Phillips EDGEmaster® Gravel Stop is designed for commercial applications to seal the roof and prevent gravel and roof tar from washing over the roof line. It is manufactured in 10' lengths that provide fewer joints and seams with fewer pieces. This product is available in 2-1/2" x 3-1/2" (GS25X35), 3" x 4" (GS30X40) and 5" x 4" (GS50X40) and comes in a variety of colors (see color guide). Packaging is 10 pieces per bundle.



#1 Expanded Corner Bead	41,48
#7 Foundation Weep Screed	46
#15 Double V Expansion Joint	42,48
#30 Double V Corner Expansion Joint	43
#33 Wide Expanded Flange Bead	41,48
#40 Expansion Joint	43
#66 Expanded Flange Square Casing	41,48
#66 Short Flange Square Casing	41,48
093 Expansion Joint	12,45
2-Way Corner Cap	19
2-Way Splay Corner Cap	19
3-Way Corner Cap	18
3-Way Splay Corner	18

- A -

Adaptors	19
Adjustable Inside Corner	17
Angle Flashing	50-51
Archway Corner Bead (Arch Bead) & Trim	13,15,20
Area Separation Walls	40
ASTM	54
ASW I-Studs	40

- B -

Backing Plate	36
Base Flashing	51
Bullnose Corner Bead	
Metal	8-10
Paper Faced	26-29
Vinyl	14-16
Bullnose Corner & Transition Caps	18-19
Bullnose J-Round	10

- C -

C-Studs	35
Casing Bead	41, 45,48
Channels	31-33,38
Clips	40
Cold Rolled Channels	33,38
Control Joints	12,17, 42-43,45,48
Corner Beads	
Metal	6-10
Paper Faced	23-29
Stucco	41,48
Veneer	44-45
Vinyl	13-16
Corner Trim	22
Custom Fabricated Shapes	38
Customer Service and Care	2-4

- D -

Diamond Mesh Lath	47
Double V Corner Expansion Joint #30	43
Double V Expansion Joint #15	42,48
Drywall Furring Channel	32-33
Drywall Hemmed Track	35,39-40
Drywall Studs	35,39-40
Drywall Tape	22
Drywall Track	35,39-40

- E -

Eave Drip	49
EDGEmaster® Roofing Metals	49-51
E-Z Strip® Expansion Control Joint (Vinyl)	17
Expanded Corner Bead #1	41,48

Expanded Flange Square Casing #66	41,48
Expansion Joint #15	42,48
Expansion Joint #30	43
Expansion Joint #40	43
Expansion Joint 093	12,45
Expansion Control Joint E-Z Strip® (Vinyl)	17

- F -

Fire Rated Assemblies	39-40
First Choice Metal Corner Bead	6-7
Flashing	50-51
Flat Flashing Shingles	51
Flat L-Tear Strip	21
Flat Stock	36
Flat Strap	36
Foundation Weep Screed	46
Furring Channels	32-33

- G -

gripSTIK® Vinyl Products	13-21
Gravel Stop	51
Gutter Apron (Open Angle)	49

- H -

H-Stud	40
Hat Channel	32
Hemmed Furring Channel	32
Hemmed H-Stud	40
Hemmed Track	35,39-40
High Hat Channel	32
Hot-Dipped Galvanized Corner Bead	6-10

- I -

I-Studs	39-40
Inside Corner Adjustable	17
Inside Corner Bead	
Paper Faced	30
Vinyl	16-17
Installation Products	22
Interior Framing	31-36

- J -

J-Round	10
J-Track	39
J-Trim	12, 20,45
J-Weep	46

- K -

Kal-Korner® Bead	44
Kerfed Bullnose	
Metal	10
Vinyl	16
klinchSTIK® Metal Corner Bead	6
Knurled Angle Runner (Utility Angle)	33
kwikSTIK® Paper Faced Products	23-30

- L -

L-Tear Strip	21
L-Trim	
Metal	11
Paper Faced	30
Veneer	45
Vinyl	20
Lath	47-48
LEED® Certification	55

- M -

Masonry Screed46
 Material Certification54
 MAX-Flex® Archway 13,15,20
 Mesh Lath47
 Metal Angle Runner33
 Metal Beads & Trims 6-12
 Metal Corner Beads6-10
 Metal Framing35
 Metal Lath 47-48
 Metal Studs 35,39-40
 Metal Track 35,39-40
 Metal Trims 11-12
 Mini Bullnose 14-15
 Mini Veneer Bead44
 Mud Hopper22,25
 Mudable Trims 11

- N -

Nail-On Paper Faced Beads 28-29
 Nail-On Square Bead29
 No Bead Paper Faced Metal 23-24,30
 Nonload Bearing 35,39-40
 Nonstructural Framing 35,39-40
 Nonstructural Studs 35,39-40

- O -

Open Angle Splay Corner Bead
 Metal7,9
 Paper Faced 25-28,30
 Vinyl 13,15

- P -

Pan Flashing50
 Paper Faced Flexible Corner Trim22
 Paper Faced Metal Corner Beads 23-29
 Paper Faced Metal Products 23-30
 Paper Faced Metal Trims30
 Partition Angle33,38
 Phillips Advantage3
 Plant Locations 2-3
 Plaster Beads & Trims41-46
 Plaster Casing Beads41
 Plaster Control Joints 42-43
 Plaster Corner Beads 41,44-45
 Pre-Bent Flashing51
 Press Brakes Shapes38
 Product Specifications54

- R -

RC-1 and RC-231
 Reveal Trim12
 Res Bar30
 Resilient Sound Channel31
 Roll Flashing50
 RollPRO®22
 Roof Edge49
 Roofing Metals 49-51

- S -

Self-Furring Diamond Mesh Lath47
 ShadowFree® Metal Products 6-9
 Shaftwall/Stairwell39
 Short Flange Square Casing #6641,48

Splayed Corner Bead
 Metal7,9
 Paper Faced 25-28,30
 Vinyl 13,15
 Spray Adhesive21
 Standards54
 Step Flashing51
 Stucco Casing Beads41
 Stucco Control Joint 42-43
 Strap36
 Structural Accessories38
 Structural Framing37
 Structural Studs37
 Structural Tracks37
 Studs, Steel 35,37,39-40
 Style D Roof Edge49

- T -

Tabbed J-Track39
 Tape-On Paper Faced Beads 23-27
 Tape-On Paper Faced Trims30
 Tile Pan (Sidewall Flashing)50
 Tracks 35,39-40
 Transition Adaptors19
 Trim Products
 Metal 11-12
 Paper Faced Metal30
 Paper Faced Vinyl22
 Vinyl 20-21

- U -

U-Channel35,37-38,40
 U-Track40
 U-Trim11
 Uneven Leg Paper Bead25
 Utility Angle33,38

- V -

Veneer 44-45
 Veneer Beads & Trims 44-45
 Veneer Casing Beads 44-45
 Veneer Corner Beads 44-45
 Vinyl 13-21
 Vinyl Adaptors19
 Vinyl Beads & Trims 13-21
 Vinyl Finishing Products 20-21
 ViperStud®34
 ViperTrack®34

- W -

Wall (Dormer) Flashing50
 W-Valley50
 Weep Screed46
 Weep Hole Casing Bead41
 Wide Expanded Flange Bead #3341,48
 Wide Hat Channel32

- Z -

Z-Flashing51
 Z-Furring Channel33
 Zinc Control Joints12,45
 Zinc Veneer and Stucco Products41-46



CORPORATE OFFICE

4949 S. 30th Street
Omaha, NE 68107
800.822.5055 / 402.339.3800
402.339.0772 Fax

NILES PLANT

504 Walnut Street
Niles, OH 44446
800.348.4338 / 330.652.4335
800.252.7692 Fax

TAMPA PLANT

5820 West Linebaugh Avenue
Tampa, FL 33624
800.822.5055 / 813.319.0931
402.339.0772 Fax

CERTIFICATE OF COMPLIANCE

This certifies that the following products meet the applicable specifications for drywall products as designated herein and will perform equal to or better than comparable products when used as detailed and in accordance with our recommendations.

ASTM DESIGNATION FOR C1047

Standard Specification for Accessories Gypsum Wallboard and Gypsum Veneer Base

Drywall Metal Beads and Trims

Corner Bead
Bullnose Corner Bead
J-400, L-200, U-200

Conventional Plaster Accessories

#1 Expanded Corner Bead
#15 Double V Expanded Joint
#30 Double V Corner Expansion Joint
#33 Wide Flange Expanded Bead
#40 Expansion Joint
#66 Expanded Flange Square Casing
#66 Short Flange Square Casing

Veneer Beads and Trims

Mini Veneer Bead
Kal-Korner®
J-Trim Casing Bead
L-Trim Casing Bead

kwikSTIK® Paper Faced Metal Beads and Trims*

gripSTIK® Vinyl Corner Beads and Trims
093 Expansion Control Joint

*With exceptions as noted in product literature.

ASTM DESIGNATION FOR C645

Standard Specification for Nonstructural Steel Framing Members

Channels

Cold Rolled Channel (16 Gauge)
Standard Duty Resilient Channel (RC-1)
Tru-25® Gauge Resilient Channel (RC-1)
Weath-Ex® Tru-25® Gauge Resilient Channel (RC-1)
2 Legged Expanded Resilient Channel (RC-2)
Z-Furring Channel

Metal Angle

Knurled Angle Runner 90°
Weath-Ex® Knurled Angle Runner 90°

Metal Flat Stock

Knurled Cabinet Backing (Flat Strap)

Studs and Tracks

25 and 20 Gauge Studs and Tracks
H-Studs and U-Tracks
I-Studs and J-Tracks
ViperStud® and ViperTrack®

ASTM DESIGNATION FOR C955

Standard Specification for Load Bearing Steel Studs, Runners and Bracing or Bridging for Screw Application of Gypsum Panel Products and Metal Plaster Bases

Structural Framing Products

Structural Studs & Tracks

ASTM DESIGNATION FOR A653

Standard Specification for Steel Sheet, Zinc-Coated (Galvanized) or Zinc-Iron Alloy Coated (Galvannealed) by the Hot-Dip Process

Coatings

Galvannealed
Hot-Dip Galvanized



» LEED® Certification

Phillips Manufacturing Co. understands the importance of recycling and manufactures all of its products utilizing materials with recycled content. Phillips Manufacturing's products contain a minimum of **30% total recycled content** (25% post-consumer and 5% pre-consumer). Using Phillips products can contribute to several LEED® points under the Materials and Resources category.

- » **MR Credits 2.1 & 2.2 Construction Waste Management. Recycling construction waste contributes to LEED® credits MR 2.1 & 2.2 and cold formed steel is 100% recyclable.**
- » **MR Credits 4.1 & 4.2 Recycled Content**
- » **MR Credits 5.1 and 5.2 Regional Materials**

To request a project specific LEED® letter, please visit our website at PHILLIPSmfg.com

» Additional Information Available at:

www.PHILLIPSmfg.com

Phillips is dedicated to providing you the most up to date information on our website including:

- » PDF Product Catalog
- » Interactive Digital Catalog
- » Packaging Sheets
- » Submittals
- » Assembly Drawings
- » Material Certifications
- » Spanish-English Product Guide
- » 3-Part Specifications
- » Installation Recommendations
- » LEED® Form
- » MSDS Sheets
- » Fire Ratings
- » Press Releases
- » Sound Transmission Control



CONNECT WITH PHILLIPS



Headquarters & Manufacturing Plant:
Omaha, Nebraska

Office and Manufacturing Plant:
Niles, Ohio

Distribution Warehouse:
Phoenix, Arizona

Manufacturing Plant:
Tampa, Florida

PHILLIPSMFG.COM
800.822.5055

Printed in USA.

Copyright © 2012 Phillips Manufacturing Co.
All rights reserved.

REG08/12

The ViperStud® Logo, "ViperStud®", "ViperTrack®", and "ViperRib®" are registered trademarks of Ware Industries Inc. and are used by Phillips Manufacturing Co. under license from Ware Industries Inc.