



BUILD IT BEAUTIFULLY

ARCHITECTURAL
MASONRY
PRODUCTS



Building the future™



Gatewood Memo

175

You may already know that CEMEX is one of the leading producers of cement, aggregate and ready-mix concrete in the United States. You may not know that we also produce a wide variety of building materials including architectural masonry products and hardscapes. CEMEX does more than supply materials, we provide solutions. From technical advice to custom tailored products, the people of CEMEX lead the way by helping you Build It better.



CHOOSE EXPERIENCE

For more than 100 years the people of CEMEX have been hard at work turning visions into realities. It takes the combined efforts of the best people coming together to rise to the level of industry leader. At CEMEX, we constantly strive to find better ways to manufacture and deliver high quality products, while maintaining a responsibility to environmental stewardship.

With the knowledge gained from producing a wide range of products we are able to anticipate requirements and provide solutions that work. Plus, all of your architectural block, hardscape and other cementitious product needs can be met from a single source, a source you can trust. To the people of CEMEX, you are a partner, not just a customer. That's one advantage of working with CEMEX.

CHOOSE VARIETY

CEMEX architectural masonry products are available in a wide assortment of surface textures, sizes, styles and colors. Now you can select a product that enhances your design instead of building around product limitations. Best of all, CEMEX architectural block delivers durability, efficiency and affordability.



CEMEX Polished Designer Stone™ is engineered and manufactured to exacting standards to give the look, feel and durability of expensive granite or tile at a much lower cost. Whether you are using it in a veneer application or as a single-wythe wall system, you can be assured of a beautiful interior or exterior surface. When your design calls for a sleek, smooth surface, consider using CEMEX Polished Designer Stone™.

POLISHED DESIGNER STONE™

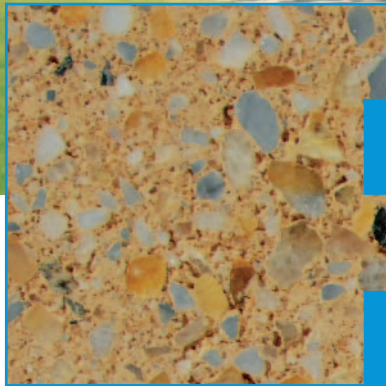
GROUND FACE UNITS



When variety in texture and color is integral to your design, CEMEX ground face units may provide the solution you need. Ground face units allow you to bring distinct architectural elements that will enhance the beauty and durability of your design; giving you the freedom to be creative while staying within your budget. You set the parameters, we'll deliver.



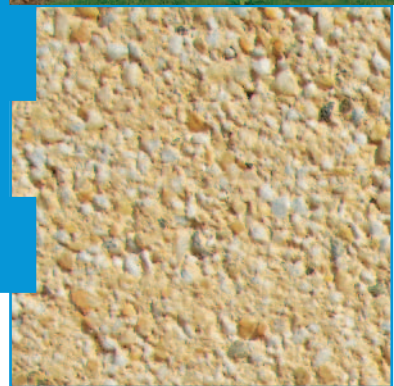
DRESSED STONE



CEMEX Dressed Stone is available in larger sizes than traditional block and you can choose from two finishes, shot blast and polished face. The colors and textures of Dressed Stone were inspired by natural stone. The wide assortment of shapes and sizes provides designers and architects the ability to create a variety of wall patterns and the flexibility to create designs that make a lasting statement. Larger-scaled units add strength and durability, making Dressed Stone ideal for creating beautiful and unique building facades.



Add the appearance of architecturally exposed aggregate to your design by specifying CEMEX Shot Blast masonry units. CEMEX takes great care to ensure that the surface of our Shot Blast masonry units is uniform and consistent so that it doesn't detract from the naturally colored aggregates and pigments. Depending on your design intent, it can be specified with either fine or coarse texture. When color is a critical design element, CEMEX will create custom colors to your specifications, bringing your design to life.



SHOT BLAST MASONRY UNITS



When you want to include the definition and appearance of chiseled stone, CEMEX Split Face units may be just the solution you need. With a pre-finished texture, quick installation is possible, saving both time and money. Strict quality control standards provide consistent color and texture time after time. You can order Split Face units with ribs or scores to add vertical lines to your design.

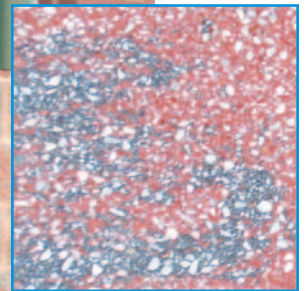
Ribbed units can be aligned to form continuous vertical patterns in your wall. The combinations of colors and ribs available through CEMEX can open the door to your creativity.

SPLIT FACE AND RIBBED UNITS

COLORCAST™ MASONRY UNITS

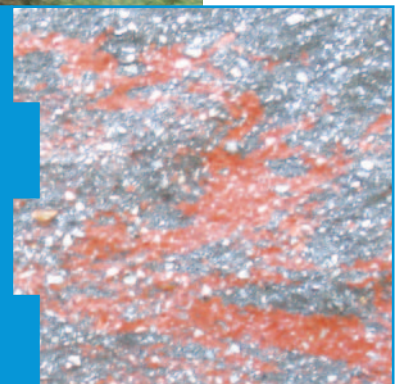


Smooth



Polished

The ability to blend two colors to create a unique look sets CEMEX Colorcast™ apart. The different colors are integral throughout each unit providing additional opportunities to be creative with color. Colorcast™ masonry units come in four finishes, split face, polished, shot blast and smooth. An extremely versatile building material, Colorcast™ gives architects the flexibility to blend surfaces, textures and colors without sacrificing longevity. CEMEX Colorcast™ delivers lasting beauty that requires little maintenance. Colorcast™ allows you to easily blend function with beauty and create structures that are both smart and beautiful.



Split Face

WALL BRICK™



CEMEX Wall Brick™ is a structural architectural unit with the color-blending characteristics of utility brick. When used as single-wythe walls with two finished sides, CEMEX Wall Brick™ can substantially reduce construction time and cost. Consider incorporating CEMEX Wall Brick™ into your plans when you need to minimize construction time and cost without sacrificing durability or quality. If you are considering utilizing utility brick, discover the difference CEMEX Wall Brick™ can make.

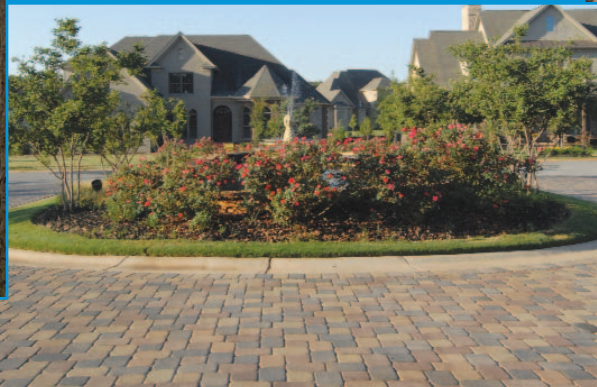
rial Hospital

AND MORE....

CEMEX is uniquely positioned to be your building supply partner. In addition to cement, concrete, aggregates and masonry products we also manufacture and distribute numerous complementary products that will put the finishing touches on your project. Our goal is to be your single source for building materials. Ask your local CEMEX representative for information regarding our selection of the following products:

- Segmental Retaining Wall Blocks,
- Concrete Pavers,
- Decorative Landscape Aggregates, and more!

Design and creativity have no bounds when surface textures are combined with CEMEX's wide selection of sizes, shapes and colors. Because architectural masonry units are modular, combining different colors and textures can provide an interesting contrast in both visual and textural characteristics. It is one of the most versatile and durable building materials available. In addition to the design flexibility, it also possesses strength, efficiency and affordability. We invite you to explore the ways CEMEX can help you with your next project. Call your CEMEX representative or visit us online at www.cemex.com today.





Building the future™

www.cemexusa.com

North & South Carolina (800) 786-5620 ■ Florida (888) 279-1654

North & South Carolina Color Guides

Architectural Masonry Units



CAROLINAS SPLIT FACE COLORS

Although some variation may have occurred during printing, colors are shown as accurately as possible. Final selection should be made from actual samples whenever possible. Please contact your local CEMEX representative or call 800-786-5620 for samples.



80 Pure White



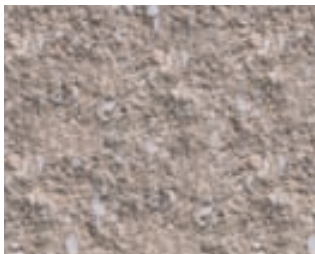
81 Cameo White



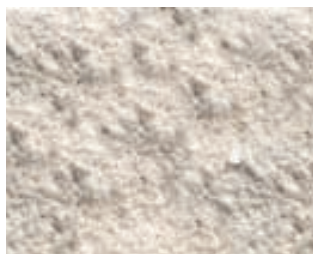
861 Soft Ivory



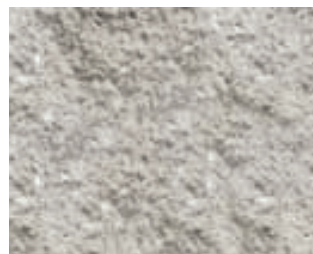
871 Almond



94 Buckskin



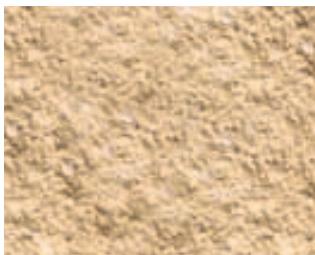
98 Manilla Tan



99 Pearl



402 Burnt Orange



403 Butterscotch



404 Coral Red



821 Blue Steel



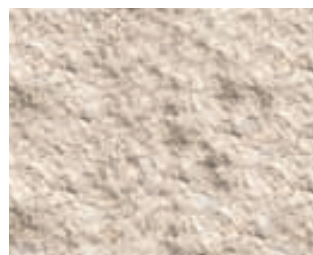
831 Salt & Pepper



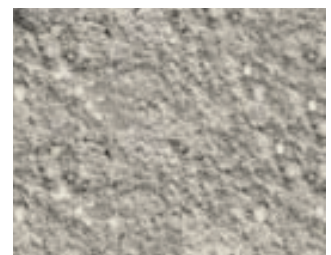
841 Sandstone



851 Natural Beige



881 Sandpebble



931 Antique Gray

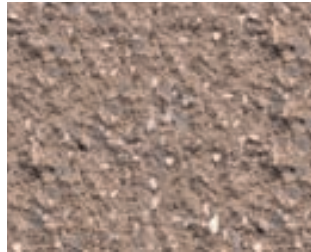
For more information or to request samples, please call us toll free at 800-786-5620 or locally at 828-253-9383.
190 Meadow Road, Asheville, NC 28803

CAROLINAS SPLIT FACE COLORS

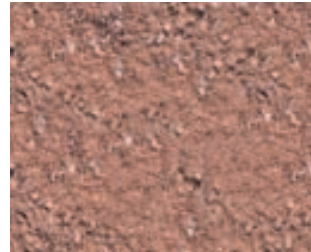
Although some variation may have occurred during printing, colors are shown as accurately as possible. Final selection should be made from actual samples whenever possible. Please contact your local CEMEX representative or call 800-786-5620 for samples.



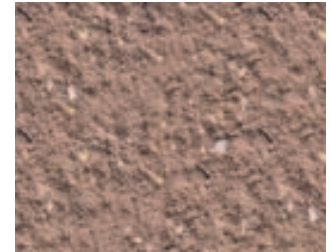
41A Colorado Sand



44 Cinnamon



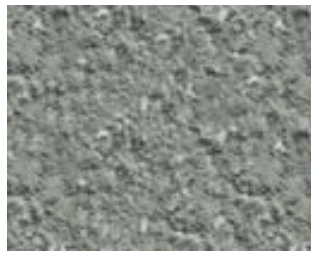
45 Terra Cotta



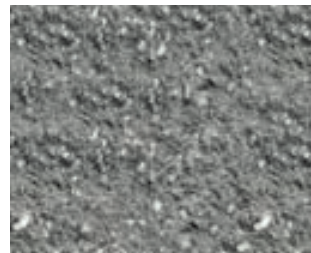
46 Rustic Red



48 Granite



50 Winter Gray



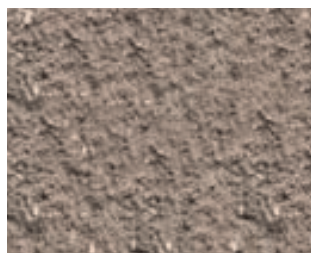
52 Slate Gray



55A Chestnut Red



56 Chestnut



60A Rosewood



61 Country Stone



63 Redwood



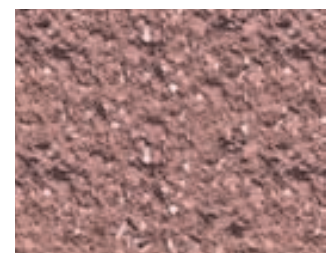
64 Autumn Wood



65 Mountain Fog



66 Suede



67 Indigo Red

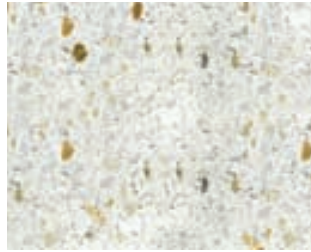
For more information or to request samples, please call us toll free at 800-786-5620 or locally at 828-253-9383.
190 Meadow Road, Asheville, NC 28803

CAROLINAS POLISHED DESIGNER STONE COLORS

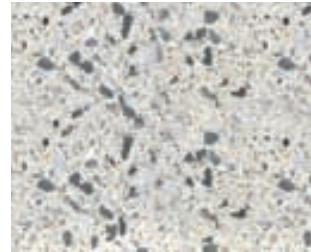
Although some variation may have occurred during printing, colors are shown as accurately as possible. Final selection should be made from actual samples whenever possible. Please contact your local CEMEX representative or call 800-786-5620 for samples.



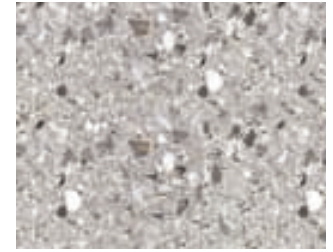
301 Crystal White



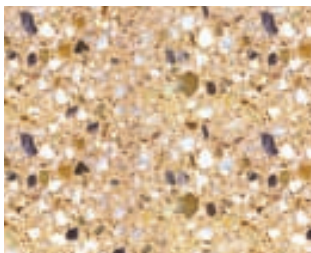
302 Winter White



303 Salt & Pepper



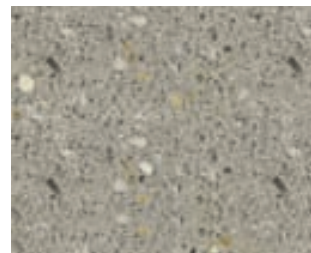
304 Blue Steel



305A Windrift



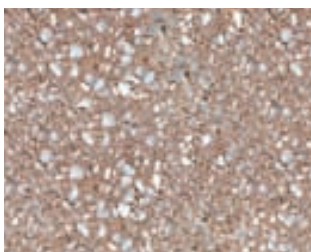
306A Natural Beige



307 Antique Gray



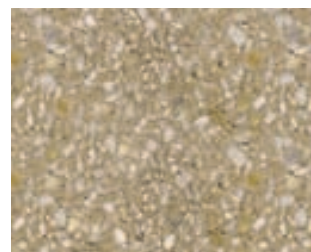
308A Mountain Sand



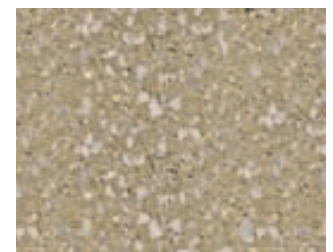
309 Medium Plum



310 Carolina Clay



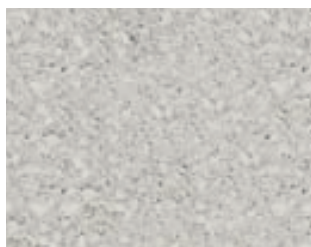
311A Sandlewood



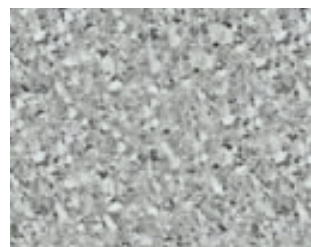
312A Woodhaven



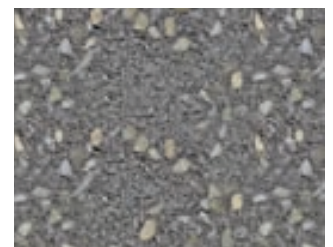
313 Walnut



314 Grand South



315 Stone Crest



316 Blue Stone

For more information or to request samples, please call us toll free at 800-786-5620 or locally at 828-253-9383.
190 Meadow Road, Asheville, NC 28803

CAROLINAS SHOT BLAST COLORS

Although some variation may have occurred during printing, colors are shown as accurately as possible. Final selection should be made from actual samples whenever possible. Please contact your local CEMEX representative or call 800-786-5620 for samples.



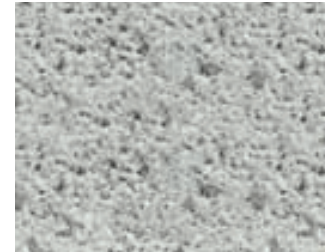
301 Crystal White



302 Winter White



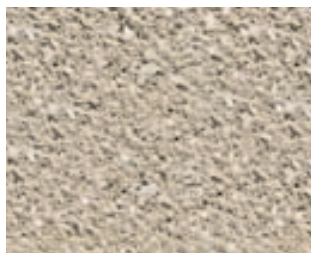
303 Salt & Pepper



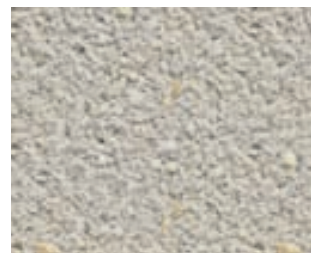
304 Blue Steel



305A Windrift



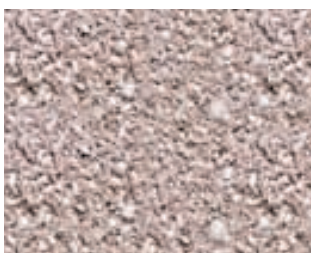
306A Natural Beige



307 Antique Gray



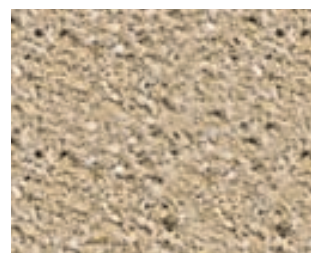
308A Mountain Sand



309 Medium Plum



310 Carolina Clay



311A Sandlewood



312A Woodhaven



313 Walnut



314 Grand South



315 Stone Crest

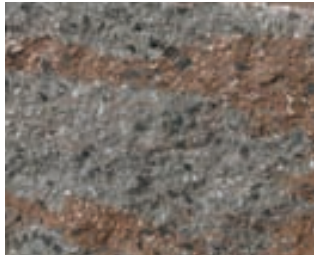


316 Blue Stone

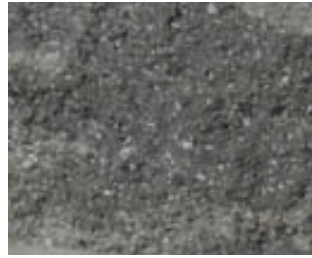
For more information or to request samples, please call us toll free at 800-786-5620 or locally at 828-253-9383.
190 Meadow Road, Asheville, NC 28803

CAROLINAS COLORCAST™ SPLIT FACE COLORS

Although some variation may have occurred during printing, colors are shown as accurately as possible. Final selection should be made from actual samples whenever possible. Please contact your local CEMEX representative or call 800-786-5620 for samples.



CC1 Cherokee Redstone



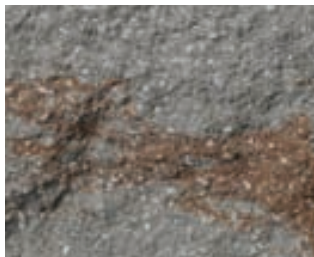
CC5 Blue Ridge Graystone



CC2 Blowing Rock Brownstone



CC6 Albermarle Sandstone



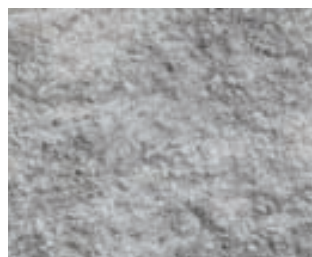
CC3 Queen City Light Stone



CC7 Yadkin Yellowstone



CC4 King's Mountain Dark Stone



CC8 Piedmont Limestone

For more information or to request samples, please call us toll free at 800-786-5620 or locally at 828-253-9383.
190 Meadow Road, Asheville, NC 28803

Florida Color Guides

Architectural Masonry Units



SPLIT FACE COLORS

Although some variation may have occurred during printing, colors are shown as accurately as possible. Final selection should be made from actual samples whenever possible. Please contact your local CEMEX representative or call 888-279-1654 for samples.



Light Plum



Camel



Pink Cream



Brownstone



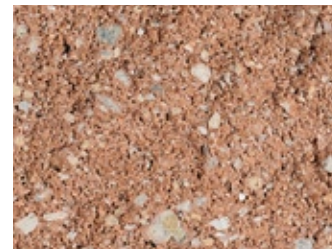
Nutmeg



Winter White



Buff



Walnut



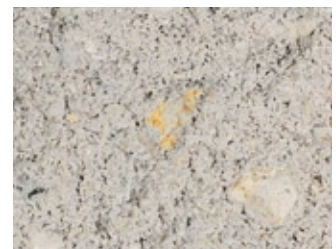
Terra-Cotta



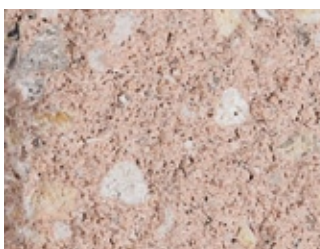
Black Charcoal



Saffron



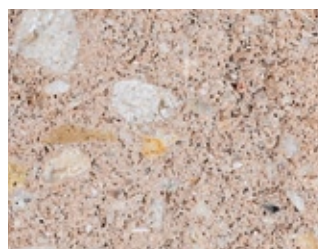
Putty



Sandpebble



Brick



Chestnut

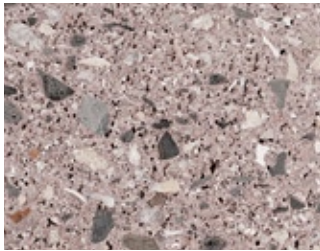


Brown

For more information or to request samples, please call us toll free at: 888-279-1654.

GROUND FACE COLORS

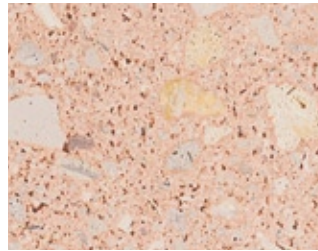
Although some variation may have occurred during printing, colors are shown as accurately as possible. Final selection should be made from actual samples whenever possible. Please contact your local CEMEX representative or call 888-279-1654 for samples.



Charcola



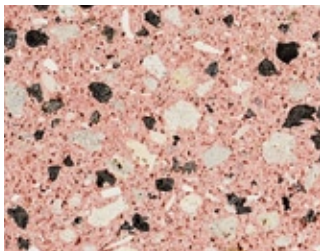
Salt & Pepper



Pink Cream



Mesquite



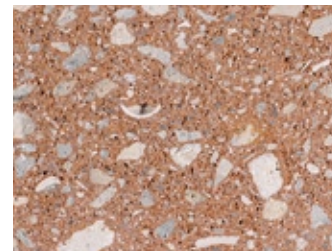
Watermelon



Sea-View



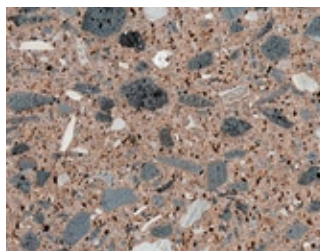
Buff



Buckskin



Natural Gray



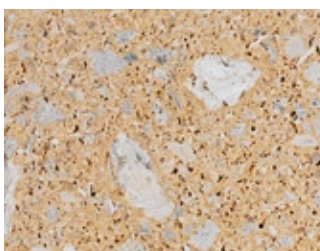
Brownstone



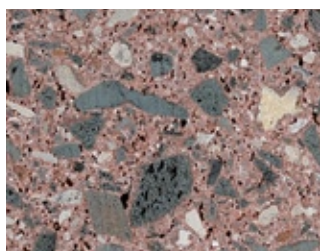
Saffron



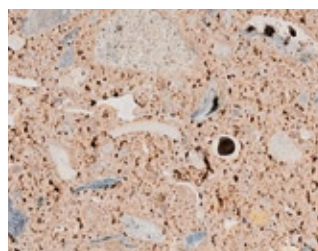
White



Suntan Yellow



Redstone



Sand Dune



Black Pearl

For more information or to request samples, please call us toll free at: 888-279-1654.