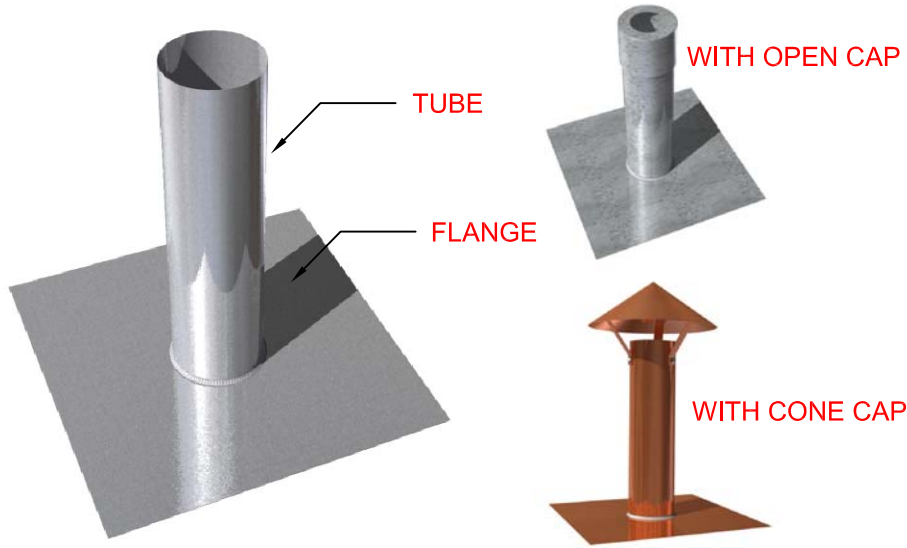


# FLAT FLANGE METAL TUBE



## STANDARD SIZE:

TUBE:

DIA. H  
 4 3/4" X 18"  
 5" X 18"

FLANGE:

L1 L2  
 18" X 18"

## MATERIAL:

[ ] COPPER [ ] 16 [ ] 20  
 [ ] STAINLESS STEEL 26  
 [ ] LEAD COATED COPPER [ ] 16 [ ] 20

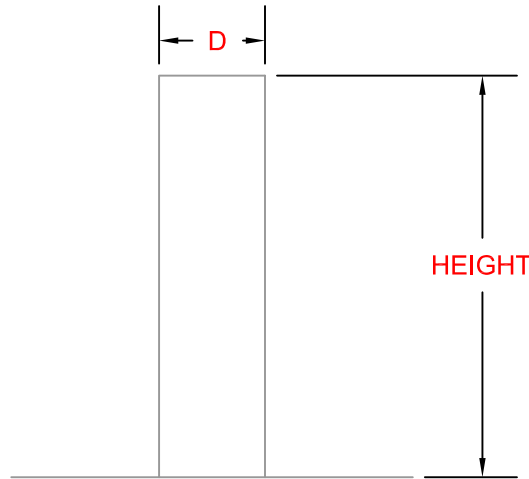
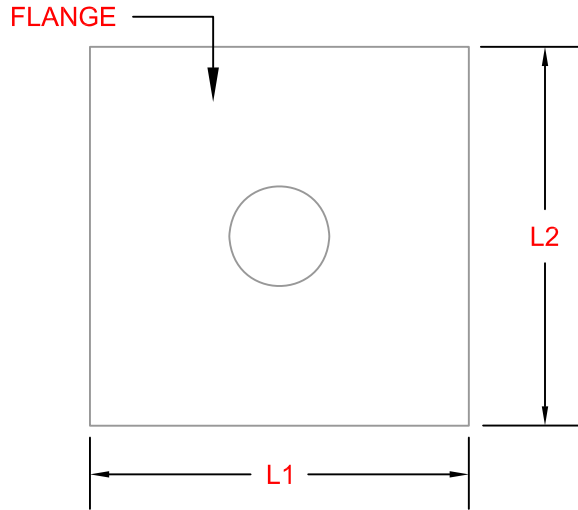
## DIMENSION:

[ ] D  
 [ ] HEIGHT

FLANGE:

[ ] L1  
 [ ] L2

QUANTITY [ ]



ONCE THE FABRICATION BEGINS, ITEMS CANNOT BE RETURNED. THE DETAILS FOR THIS JOB WERE CHECKED AND APPROVED BY: \_\_\_\_\_

B & B SALES REP

NAME: \_\_\_\_\_ SIGN: X \_\_\_\_\_

DATE: \_\_ / \_\_ / \_\_



25-40 50 TH AVE.  
 LIC, NY 11101  
 P 718 433 2501  
 F 718 433 2709  
 info@bbsheetmetal.com  
 www.bbsheetmetal.com

COMPANY:

INVOICE:

PROJECT:

INSTALLATION INSTRUCTION:

OTHER:

DATE:

DRAWING #:

FRMFT01

PAGE(S):

1 OF 1

DRAWING BY:

NELSON SUT HO

APPROVED BY:

CHRIS PERO