

Sound-Isolated Practice Rooms

Modular, relocatable practice rooms with superior sound isolation.



SOUND-ISOLATED PRACTICE ROOMS

Wenger pioneered sound-isolation in practice rooms, and we continue to use the most advanced technologies to set new standards. More often than not, the built-in practice rooms we see simply do not work. They leak sound in and out, and the internal acoustics are often among the worst in the entire building. For built-in rooms to work, the high level of detail in the design leaves too many areas to chance during the construction phase. Often a small compromise or cut corner can render these rooms unusable for practice.

Wenger guarantees the performance of our sound-isolated practice rooms. Wenger rooms also offer a clean, attractive look that you can match to your space. And each room is modular – so it can be moved down the hall or across town with little trouble and no effect on performance.

PRODUCT DETAILS

- Clean, attractive 4" (10cm) thick steel wall and ceiling panels are filled with high-grade acoustical insulation.
- Rails, channels, and corner pieces interlock panels at the floor and ceiling with double-sealed, IsoLoss™-gasketed seams.
- Glass-panel door allows easy monitoring, inviting ambience and personal security.
- Advanced ventilation system supplies complete fresh air exchange every two minutes.
- Special electronic ballasts lower power consumption of lighting and prevent fluorescent hum.
- UL®-classified room electrical system.
- Freestanding modular rooms are installed under the supervision of Wenger technicians.
- Five-year warranty.



OPTIONS

- 15" (38cm) and 30" (76cm) height extensions add cubic volume to accommodate larger groups.
- Special door options include a 4' (122cm) door for large instruments, a double door for grand piano and a fire-rated door.
- Vertical window panels in two sizes.
- Horizontal broadcast window.
- Closure panels create a complete built-in look for side-by-side installations.
- Direct heat/air connection to building ventilation system.
- Extra-capacity raceway for communications and network cabling.
- Floating floor for even greater sound isolation.
- Integral fans that use ambient air.
- Virtual Acoustic Environments technology.

Strong, clean lines and neutral colors enhance the decor of any facility.



Door Accents: Pebble Mix, Raspberry, Wedgewood, Charcoal, Oyster, Black or Gray Primer



Charcoal Frames and Door



Oyster Sides



SOUND-ISOLATED PRACTICE ROOMS

Application Information

General Information

- Practice rooms are pre-wired to easily upgrade to Virtual Acoustic Environments™ (VAE) (see pages 6-7).
- The modular design allows easy relocation, size changes and reconfiguring as needs change.

General Specifications

- Many size options accommodate one performer or ensembles up to 15 performers.
- Sizes range from 5'8" x 4'5" to 14'5" x 25'8". (173 x 135 cm to 439 x 782 cm) (SPIR 6-7). Upgrade is possible on practice rooms with areas up to 125 square feet (38 square meters).
- Interior ceiling height is 7'6" (229 cm).
- UL®-Classified room wiring system.
- Surfaces: powder-coat paint. Color: Oyster with charcoal trim.
- Sound isolation: NIC = 40.
- Sound-isolating door: STC = 43, with a full window.
- Sound-isolating ventilation: Acoustically isolated HVAC connection of STC 45.

Sound-Isolation and Internal Acoustics

- Ideal acoustical environment for uninterrupted instruction, rehearsal, recording, etc.
- Acoustically dry environment accurately reflects sound.
- Rated: NIC 40 exterior to interior; NIC 60 interior to interior of adjacent module.
- Ambient noise at center of module: NIC 25 with lighting and ventilation systems "on" (with built-in fans).
- Acoustically seals to floor without attachments, adhesives, or caulking.

Construction

- Wall and ceiling panels UL Class 1 classification for flame spread and smoke developed.
- Wall and ceiling panels feature oyster-colored, epoxy powder-baked finish with charcoal trim.
- Hardware and electrical trim finish is stain chrome.
- Wall and ceiling frames are 16-gauge steel channels.
- Frame compensates for up to $\frac{3}{4}$ " (2 cm) variation in floor surface.
- Includes $1\frac{1}{4}$ " (3 cm) neoprene pad to isolate floor vibration.
- Interior surfaces are 22-gauge perforated or solid steel; exterior surface is 16-gauge solid steel.
- Panel perimeters feature continuous acoustical gaskets and alignment locks.
- STC 43 rated doors are pre-hung on 36" (91 cm) frame for either right- or left-hand swing, can open either in or out.
- Doors feature a double acoustical seal and an acoustically engineered window.
- Corner sections with built-in speaker enclosures and wiring for practice rooms.
- Wall panels with built-in microphone mounts with wiring for practice rooms.

Mechanical Systems

- Built-in components and wiring to allow for easy upgrade to practice rooms without module disassembly.
- Built-in fluorescent lighting with electronic ballasts to minimize fluorescent hum and power consumption. Provides 80 fc at 36" (91 cm) above the floor.
- Room has a UL®-Classified electrical system. Features one quad receptacle, light, air, and system switches and 20' (6 m) power cable. Requires wiring a Wenger supplied connector by a local electrician.
- Two quad boxes for customer installed fire alarms, phone lines, data ports, etc.
- Built-in fan system typically exchanges ambient surrounding air every 1.5 to 2 minutes. For direct connect HVAC Mechanical Systems contact your Wenger Representative.
- Module Plenum and ducts feature acoustically isolating construction.

SOUND-ISOLATED PRACTICE ROOMS

Application Information

Layout Requirements

This information should help you incorporate sound-isolated practice rooms with or without VAE Technology into your plans. If you have questions or require additional information, please call us.

- For practice rooms with fans, building ceiling height of 8'1" (246 cm) is required. For larger modules with a ceiling beam, 8'8" (104 cm) is required. For easy upgrade to practice room with VAE technology, allow for 9' of clearance. Models with direct connection to HVAC require a minimum of 10'7" (323 cm) clearance.
- 12" (30 cm) of space is recommended between walls and/or building structure for ventilation and acoustical performance.
- Provide dedicated 20 amp electrical service within 20' (610 cm) of module's power panel.
- Installations not on grade level or less than 5" (13 cm) of concrete floor that is above ground level should include optional floor system to control structure-borne sound. When floors are used, contact Wenger regarding ADA compliance.
- Refer to unit weights for structural requirements.
- Floor must be level to $\frac{3}{4}$ " (2 cm) over the entire perimeter of the room.

Flexibility Factors

- The base has $\frac{3}{4}$ " (2 cm) of adjustability for irregularities in the floor.
- Panel changeability:
The panel arrangements shown in the typical layout drawings are for normal music practice usage. Because of the component design, each panel (i.e., door, power, vent) can be positioned at any point around the perimeter of the room. The unit can be ordered with any optional combination of panels.
- Door available with right-hand (RH)/right-hand reverse (RHR) or left-hand (LH)/left-hand reverse (LHR) swings.
- Ceiling height extensions of 15" (38 cm) or 30" (76 cm) are available for V-Ready practice rooms only. Rooms with ceiling height extensions cannot be upgraded to active acoustics.

Site Prep Requirements

- Wall and floor finishes completed to specification by others.
- Electrical system complete connection to building service by others.
- Two ventilation options:
 - a. Self contained exhaust fans and vent intake panels circulate ambient air.
 - b. Direct-connect to building HVAC system. Connection to building system with 8" (20 cm) Flexduct by others.

Installation Requirements

- Closure panels required for improved security.
- Electrical requirements: 120V, 20A, 60Hz for each room. Dedicated circuit required.
- Ambient temperature for electronics 32°F to 95°F (0° to 35°C).
- Installation by Wenger service technicians is standard.
- See pages 4-5 for clearance requirements.

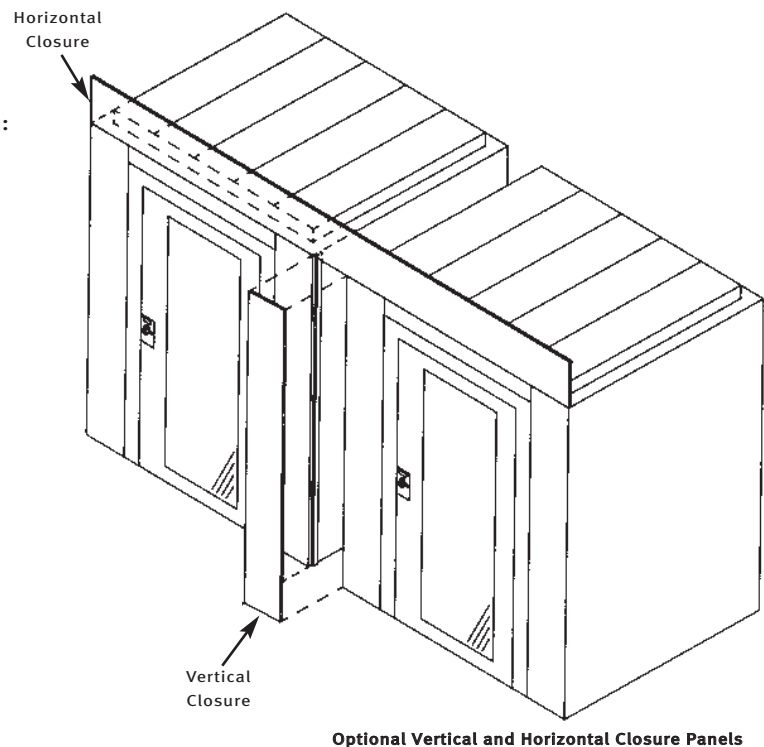
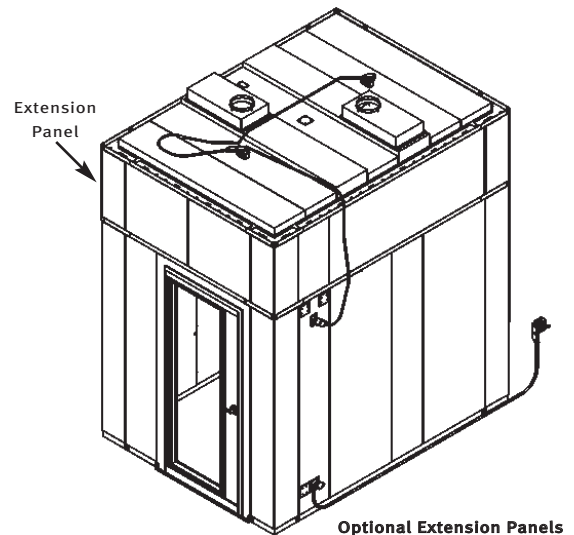
Wenger sound-isolated practice rooms and practice rooms with VAE Technology feature UL®-classified electrical systems.

SOUND-ISOLATED PRACTICE ROOMS

Application Information

Options

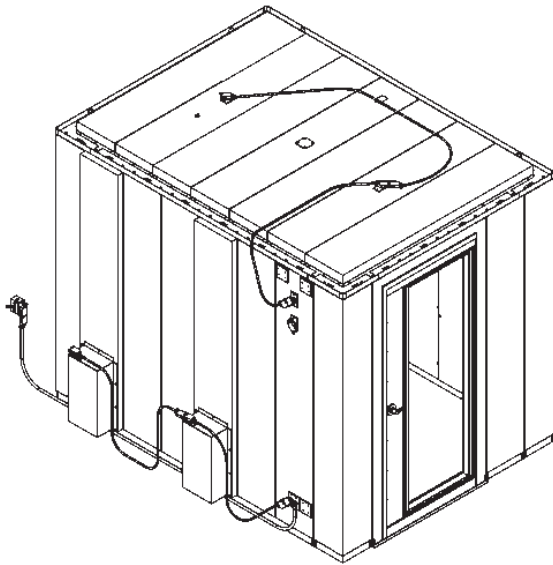
- Communication panel and large box communication panel provide junction boxes for customer installed phone lines, data connections, additional electrical outlets and low-voltage studio communications, etc.
- Sound-isolating floating floor system.
- Extension panels increase module height by 15" or 30" (38 or 76 cm). (Cannot be used with practice rooms that have VAE technology).
- Custom options include the following: one-way glass, 20-minute UL®-Classified fire-rated doors, double doors and track ready light panels.
- Closure panels provide a clean, built-in look for side-by-side practice room installations. Maximum 24" (61 cm) vertical width and maximum 24" (61 cm) horizontal height (horizontal closures are required for practice rooms that have VAE technology).
- 4' (122 cm) door to accommodate percussion instruments as large as a timpani.
- Window panels viewable window area:
 - 15" panel 8 ⁵/₈" wide x 75 ⁵/₈" high (38 cm panel 22 x 192 cm)
 - and
 - 30" panel 23 ⁵/₈" wide x 75 ⁵/₈" high (76 cm panel 60 x 192 cm).
- Horizontal broadcast viewable window area:
 - 32 ¹/₄" wide x 66 ⁵/₈" wide (82 x 169 cm).
- VAE Technology.



SOUND-ISOLATED PRACTICE ROOMS

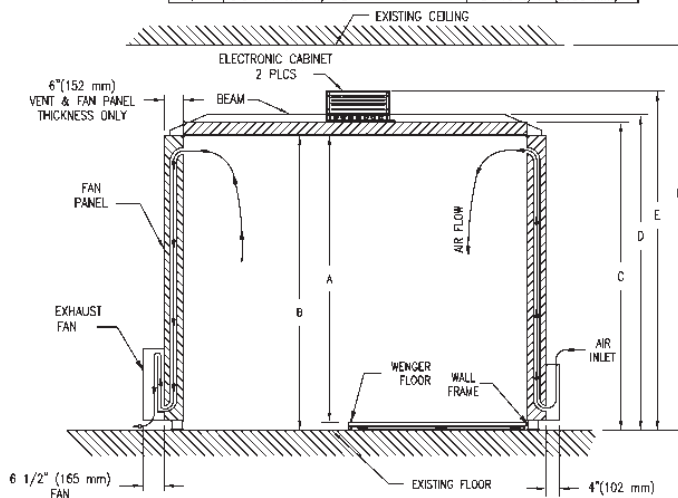
Application Information

Typical Module — with built-in fans



- Wenger employs a modular concept in room design. Walls are constructed from interchangeable 15" (381 mm) and 30" (762 mm) wide panels. Room layout can vary from the view shown. Wall, door, window, electrical and other optional panels can be arranged to customize the room.
- Wenger will design each room for optional placement of doors, windows, electrical panels, lights and fan/vent panels.
- Wenger's size numbering system refers to the number of 15" (381 mm) panels used to create a wall. A 0507 sized room is 5 - 15" (1905 mm) panels wide by 7 - 15" (2515 mm) panels long. The resulting interior dimensions of a 0507 is 75" x 105" (1905 x 2667 mm).
- Recommended room to room or room to wall spacing is 12" (305 mm). Some wall panels require exterior access or may be deeper than the typical 4" (102 mm) thick panel. Closer spacing may be possible but must be reviewed by Wenger for interference, access and ventilation issues.
- Windows in adjacent rooms can be protected from glare and dust by an optional resilient shadow box installed around the periphery of the windows.

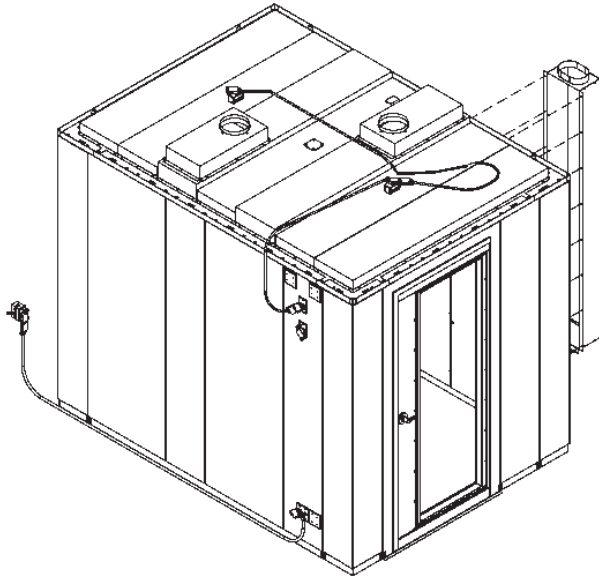
	STANDARD ROOMS	HEIGHTS DIMENSIONS
A	CEILING HEIGHT W/ FLOOR OPTION	7'-3 3/8" (2219 mm)
B	CEILING HEIGHT W/O FLOOR OPTION	7'-6 1/8" (2289 mm)
C	HEIGHT V-ROOM W/OUT BEAM	7'-10 1/2" (2400 mm)
D	HEIGHT V-ROOM W/B EAM	8'-3/4" (2448 mm)
E	TOP OF VAE	8'-6 3/4" (2610 mm)
F	MIN. CLEARANCE REQUIRED W/OUT BEAM	8'-1" (2464 mm)
F	MIN. CLEARANCE REQUIRED W/B EAM	8'-8" (2642 mm)
F	STD. HT. UNIT W/VAE	8'-10 1/4" (2699 mm)



SOUND-ISOLATED PRACTICE ROOMS

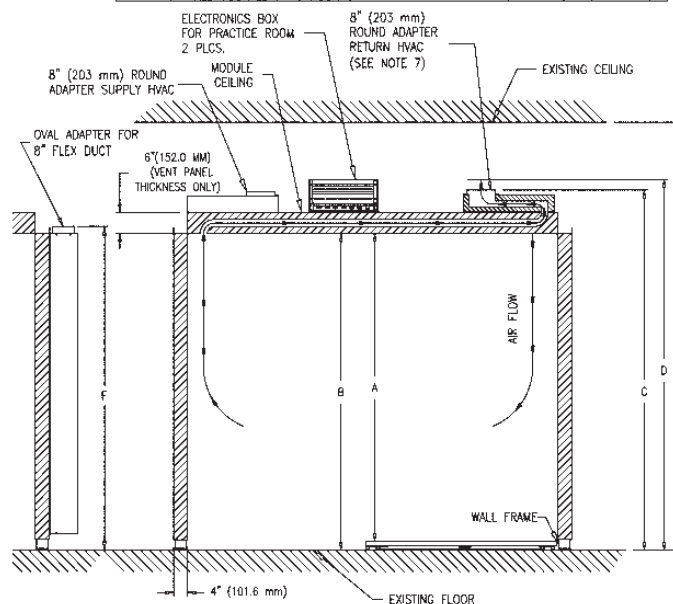
Application Information

Typical Module — with direct connect HVAC



- Wenger employs a modular concept in room design. Walls are constructed from interchangeable 15" (381 mm) and 30" (762 mm) wide panels. Room layout can vary from the view shown. Wall, door, window, electrical and other optional panels can be arranged to customize the room.
- Wenger will design each room for optional placement of doors, windows, electrical panels, lights and ceiling HVAC panels.
- Wenger's size numbering system refers to the number of 15" (381 mm) panels used to create a wall. A 0507 sized room is 5 - 15" (1905 mm) panels wide by 7 - 15" (2515 mm) panels long. The resulting interior dimensions of a 0507 is 75" x 105" (1905 x 2667 mm).
- Recommended room to room or room to wall spacing is 12" (305 mm). Some wall panels require exterior access or may be deeper than the typical 4" (102 mm) thick panel. Closer spacing may be possible but must be reviewed by Wenger for interference, access and ventilation issues.
- Windows in adjacent rooms can be protected from glare and dust by an optional resilient shadow box installed around the periphery of the windows.
- Larger rooms will have ceiling-mounted HVAC vents used in pairs. Due to space limitations, smaller rooms may have one or two HVAC vents located in the wall.

STANDARD ROOMS		HEIGHTS DIMENSIONS
A	CEILING HEIGHT W/FLOOR OPTION	7'-3 3/8" (2219 mm)
B	CEILING HEIGHT W/O FLOOR OPTION	7'-6 1/8" (2289 mm)
C	HEIGHT TO TOP LIP OF HVAC ADAPTER (8" ROUND)	8'-6 1/2" (2604 mm)
D	HEIGHT TO THE TOP OF VAE	8'-6 3/4" (2610 mm)
E	RECOMMENDED MIN CLEARANCE FOR HOOK UP HVAC	10'-7" (3226 mm)
F	WALL MOUNTED HVAC HOOK UP	7'-8 1/2" (2342 mm)



SOUND-ISOLATED PRACTICE ROOMS

Application Information

Recommended Group Size	Model Number	Outside Dimensions	Interior Floor Area (Sq. Ft.)	Approximate Weight w/o Floor	Fan Ventilated Rooms		HVAC Connected Rooms	
					Total Room Current Draw + (Amps)	Air Exchanges per Hour *	Total Room Current Draw + (Amps)	Required Total Supply Air Flow ✓ (CFM)
1-2 Musicians	0403*	5'8" x 4'5" (173 x 135 cm)	18.8 (1.75 m ²)	1377 lbs (625 kg)	5.5	51	3.6	53
	0503*	6'11" x 4'5" (211 x 135 cm)	23.4 (2.17 m ²)	1514 lbs (687 kg)	5.5	41	3.6	53
	0404*	5'8" x 5'8" (173 x 173 cm)	25 (2.32 m ²)	1560 lbs (708 kg)	6.5	38	4.6	53
	0504*	6'11" x 5'8" (211 x 173 cm)	31.3 (2.91 m ²)	1714 lbs (777 kg)	6.5	31	4.6	53
	0406*	5'8" x 8'2" (173 x 249 cm)	37.5 (3.48 m ²)	1777 lbs (806 kg)	6.5	26	4.6	53
	0505*	6'11" x 6'11" (211 x 211 cm)	39.1 (3.63 m ²)	1898 lbs (861 kg)	6.5	25	4.6	53
	0704*	9'5" x 5'8" (287 x 173 cm)	43.8 (4.07 m ²)	2072 lbs (940 kg)	7	22	5.1	65
	0506*	6'11" x 8'2" (211 x 249 cm)	46.9 (4.36 m ²)	2094 lbs (950 kg)	7.1	21	5.2	65
	0408*	5'8" x 10'8" (173 x 325 cm)	50 (4.65 m ²)	2329 lbs (1056 kg)	9	39	5.2	65
Upright Piano or 3-4 Musicians	0507*	6'11" x 9'5" (211 x 287 cm)	54.7 (5.08 m ²)	2363 lbs (1072 kg)	9	35	5.2	105
	0409	5'8" x 11'11" (173 x 363 cm)	56.3 (5.23 m ²)	2491 lbs (1130 kg)	9	34	5.2	105
	0508*	6'11" x 10'8" (211 x 325 cm)	62.5 (5.81 m ²)	2569 lbs (1165 kg)	9	31	5.2	105
	0706*	9'5" x 8'2" (287 x 249 cm)	65.6 (6.09 m ²)	2532 lbs (1148 kg)	8.9	29	6.2	105
	0509*	6'11" x 11'11" (211 x 363 cm)	70.3 (6.53 m ²)	2721 lbs (1234 kg)	9	27	5.2	105
	0806*	10'8" x 8'2" (325 x 249 cm)	75 (6.97 m ²)	2700 lbs (1225 kg)	10.2	26	6.4	129
	0707*	9'5" x 9'5" (287 x 287 cm)	76.6 (7.12 m ²)	2743 lbs (1244 kg)	10	25	6.2	129
	0906*	11'11" x 8'2" (363 x 249 cm)	84.4 (7.84 m ²)	3032 lbs (1375 kg)	10.2	23	6.4	129
	0708*	9'5" x 10'8" (287 x 325 cm)	87.5 (8.13 m ²)	3023 lbs (1371 kg)	11.9	33	6.2	129
Grand Piano or 5-6 Musicians	1006	13'2" x 8'2" (401 x 249 cm)	93.8 (8.71 m ²)	3292 lbs (1493 kg)	12.1	31	6.4	170
	0709*	9'5" x 11'11" (287 x 363 cm)	98.4 (9.14 m ²)	3214 lbs (1458 kg)	11.9	29	6.2	170
	0808	10'8" x 10'8" (325 x 325 cm)	100 (9.29 m ²)	3320 lbs (1506 kg)	12.1	29	6.4	170
	1106	14'5" x 8'2" (439 x 249 cm)	103.1 (9.58 m ²)	3439 lbs (1560 kg)	10.4	28	6.4	158
	0710*	9'5" x 13'2" (287 x 401 cm)	109.4 (10.16 m ²)	3405 lbs (1544 kg)	11.9	26	6.2	170
	0809*	10'8" x 11'11" (325 x 363 cm)	112.5 (10.45 m ²)	3525 lbs (1599 kg)	12.1	26	6.4	170
	1206	15'8" x 8'2" (478 x 249 cm)	112.5 (10.45 m ²)	3667 lbs (1663 kg)	12.1	26	6.4	194
	0711	9'5" x 14'5" (287 x 439 cm)	120.3 (11.18 m ²)	3613 lbs (1639 kg)	11.9	24	6.2	170
	1008*	13'2" x 10'8" (401 x 325 cm)	125 (11.61 m ²)	3738 lbs (1696 kg)	12.1	23	6.4	170
Percussion or 7-8 Musicians	0909	11'11" x 11'11" (363 x 363 cm)	126.6 (11.76 m ²)	3780 lbs (1715 kg)	12.1	23	6.4	210
	0712	9'5" x 15'8" (287 x 478 cm)	131.3 (12.2 m ²)	3804 lbs (1725 kg)	10.9	22	5.2	210
	0811	10'8" x 14'5" (325 x 439 cm)	137.5 (12.77 m ²)	3986 lbs (1808 kg)	11.1	21	5.4	210
	1009	13'2" x 11'11" (401 x 363 cm)	140.6 (13.06 m ²)	4013 lbs (1820 kg)	11.1	21	5.4	210
	0713	9'5" x 16'11" (287 x 516 cm)	142.2 (13.21 m ²)	4030 lbs (1828 kg)	12	20	7.4	234
	1213	15'8" x 16'11" (478 x 516 cm)	243.8 (22.65 m ²)	5583 lbs (2532 kg)	18.7	18	11.1	352
	1208	15'8" x 10'8" (478 x 325 cm)	150 (13.94 m ²)	4177 lbs (1895 kg)	12.1	19	6.4	234
	0911	11'11" x 14'5" (363 x 439 cm)	154.7 (14.37 m ²)	4260 lbs (1932 kg)	11.1	19	5.4	210
	1010	13'2" x 13'2" (401 x 401 cm)	156.3 (14.52 m ²)	4259 lbs (1932 kg)	15.3	18	9.6	234

SOUND-ISOLATED PRACTICE ROOMS

Application Information

Recommended Group Size	Model Number	Outside Dimensions (Feet/Inches)	Interior Floor Area (Sq. Ft.)	Approximate Weight w/o Floor	Fan Ventilated Rooms		HVAC Connected Rooms	
					Total Room Current Draw + (Amps)	Air Exchanges per Hour *	Total Room Current Draw + (Amps)	Required Total Supply Air Flow ✓ (CFM)
9-10 Musicians	0813†	10'8" x 16' 11" (325 x 516 cm)	162.5 (15.10 m ²)	4442 lbs (2015 kg)	15.3	18	9.6	275
	0715†	9'5" x 19'5" (287 x 592 cm)	164.1 (15.25 m ²)	4444 lbs (2016 kg)	13.1	18	7.4	299
	1209†	15'8" x 11'11" (478 x 363 cm)	168.8 (15.68 m ²)	4435 lbs (2012 kg)	12.1	17	8.1	275
	1011*†	13'2" x 14'5" (401 x 439 cm)	171.9 (15.97 m ²)	4544 lbs (2061 kg)	15.3	17	9.6	275
	1408†	18'2" x 10'8" (554 x 325 cm)	175 (16.26 m ²)	4587 lbs (2081 kg)	13.1	17	12.6	299
	0913†	11'11" x 16'11" (363 x 516 cm)	182.8 (16.98 m ²)	4730 lbs (2145 kg)	15.3	16	9.6	275
	1012*†	13'2" x 15'8" (401 x 478 cm)	187.5 (17.42 m ²)	4774 lbs (2165 kg)	15.3	15	9.6	275
	1111†	14'5" x 14'5" (439 x 439 cm)	189.1 (17.57 m ²)	4671 lbs (2119 kg)	12.1	15	11.1	275
	1409†	18'2" x 11'11" (554 x 363 cm)	196.9 (18.29 m ²)	4856 lbs (2203 kg)	13.1	15	12.6	299
11-12 Musicians	1013*†	13'2" x 16'11" (401 x 516 cm)	203.1 (18.87 m ²)	5109 lbs (2317 kg)	17.2	19	9.6	315
	1211†	15'8" x 15'5" (478 x 470 cm)	206.3 (19.17 m ²)	5027 lbs (2280 kg)	18.7	19	11.1	352
	0915†	11'11" x 19'5" (363 x 592 cm)	210.9 (19.59 m ²)	5239 lbs (2376 kg)	17.2	18	9.6	315
	1410†	18'2" x 13'2" (554 x 401 cm)	218.8 (20.33 m ²)	5190 lbs (2354 kg)	15	18	12.6	340
	1113*†	14'5" x 16'11" (439 x 516 cm)	223.4 (20.75 m ²)	5278 lbs (2394 kg)	18.7	17	11.1	352
	1212†	15'8" x 15'8" (478 x 478 cm)	225 (20.90 m ²)	5313 lbs (2410 kg)	18.7	17	11.1	352
	1015†	13'2" x 19.5" (401 x 592 cm)	234.4 (21.78 m ²)	5604 lbs (2542 kg)	18.4	16	7.8	340
	1908†	24'5" x 10'8" (744 x 325 cm)	237.5 (22.06 m ²)	5748 lbs (2607 kg)	22.2	16	14.6	340
	1411*†	18'2" x 14'5" (554 x 439 cm)	240.6 (22.35 m ²)	5376 lbs (2439 kg)	15	16	14.8	340
Ensembles of 13-15 Musicians	2008†	25'8" x 10'8" (782 x 325 cm)	250 (23.23 m ²)	6121 lbs (2776 kg)	21.4	15	13.8	412
	1115†	14'5" x 19'5" (439 x 592 cm)	257.8 (23.95 m ²)	5775 lbs (2619 kg)	18.7	15	12.8	412
	1412†	18'2" x 15'8" (554 x 478 cm)	262.5 (24.39 m ²)	5712 lbs (2591 kg)	15	15	14.8	400
	1313*†	16'11" x 16'11" (516 x 516 cm)	264.1 (24.54 m ²)	5979 lbs (2712 kg)	22	15	14.4	412
	1215†	15'8" x 19'5" (478 x 592 cm)	281.3 (26.13 m ²)	6057 lbs (2747 kg)	18.7	14	12.8	412
	1810†	23'2" x 13'2" (706 x 401 cm)	281.3 (26.13 m ²)	6215 lbs (2819 kg)	25	14	17.4	449
	1413†	18'2" x 16'11" (554 x 516 cm)	284.4 (26.42 m ²)	6083 lbs (2759 kg)	20.2	14	14.8	449
	1315*	16'11" x 19'5" (516 x 592 cm)	304.7 (28.31 m ²)	6554 lbs (2973 kg)	22.6	13	15	424
	1414†	18'2" x 18'2" (554 x 554 cm)	306.3 (28.46 m ²)	6359 lbs (2884 kg)	20.2	13	14.8	449
	1415†	18'2" x 19'5" (554 x 592 cm)	328.1 (30.48 m ²)	6674 lbs (3027 kg)	22.1	15	14.8	449
	2011†	25'8" x 14'5" (782 x 439 cm)	343.8 (31.94 m ²)	7380 lbs (3348 kg)	21.4	11	13.8	449

All values are for standard height rooms. (no extensions)

* Most frequently chosen models

† Indicates room sizes that cannot accommodate practice rooms with VAE technology.

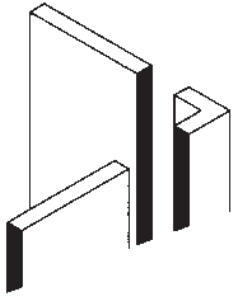
+ Includes lights, fans (if applicable), virtual acoustics (1-amp if applicable) and 3-amp ancillary load. Each power panel is to have its own dedicated 20 amp circuit. Larger rooms will have more than one power panel.

★ Integral fan panel and vent panel pairs provide approximately 120 CFM airflow, each. Supply air is drawn at ambient conditions from the exterior of the room. Larger rooms will have more than one fan/vent pair.

✓ Air flow requirement based on occupancy, room volume and electrical heat load. Cooling airflow to be 55°F (13°C). Room exterior ambient to be maintained at 75°F (24°C). In larger rooms, airflow will be divided between multiple supply and exhaust pairs. Pressure drop per supply/exhaust pair: 0.30" WG at 120 CFM maximum. For additional electrical devices, add 15 CFM for each 100 watts of power dissipated in the room. Individual room thermostatic control is recommended.

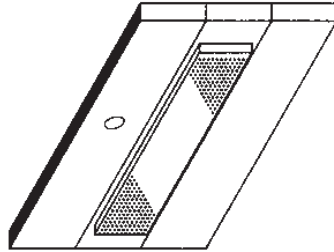
SOUND-ISOLATED PRACTICE ROOMS

Application Information



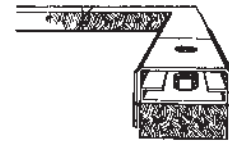
Wall Panels

4" and 6" (102 and 152 mm) thick by 15" or 30" (381 or 762 mm) wide, and filled with sound-absorbing material. Interior surfaces are perforated or sound-reflecting.



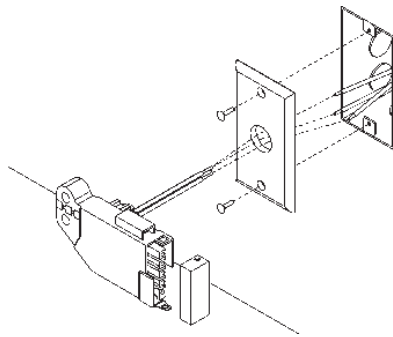
Ceiling Panels

4" and 6" (102 and 152 mm) thick by 15" (381 mm) wide in modular lengths. Panels are shipped with light fixtures attached and wired. Sprinkler system knock-out holes standard in all rooms.



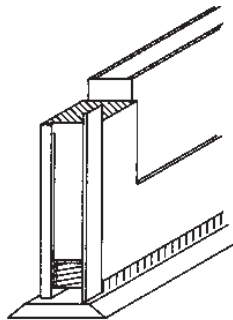
Adjustable Wall Frame

2 3/4" by 3 5/8" (70 by 92 mm) in modular lengths. A 1 1/4" (32 mm) thick neoprene pad isolates the module from the floor, thereby reducing sound transmission through the building structure. Frame allows for up to 3/4" (19 mm) adjustment for uneven floors.



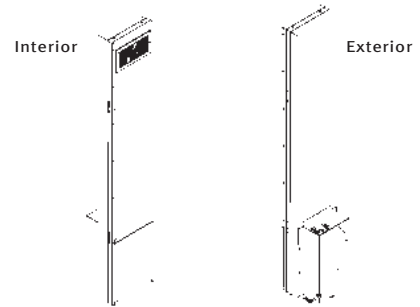
20-amp Electrical Service

The rooms are designed with an integrated UL®-Classified electrical wiring system. Distribution connector supplied by Wenger. Connector to be installed by a certified electrician.



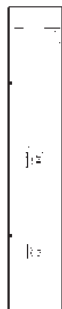
Adjustable Sweep Seal

Located at the door base to provide a positive sound barrier. Low profile threshold 1/2" (13 mm) allows easy access. Double gasket (compression and magnetic) at head and side jambs.



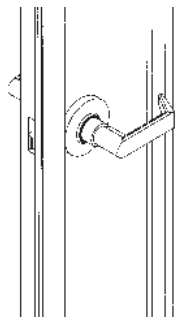
Built-in Fans

Accessible from inside practice rooms through a removable panel cover for cleaning or replacement.



Power Panel

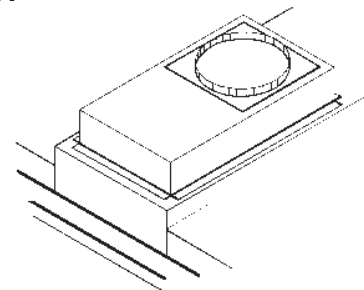
The power panel can be configured to include outlets, VAE Technology controls, controls for lights and fans. **Optional Communications Panel available.** Contact Wenger for details.



Classroom-Function Door Lever Set

Contact Wenger for detailed lever set information.

Or



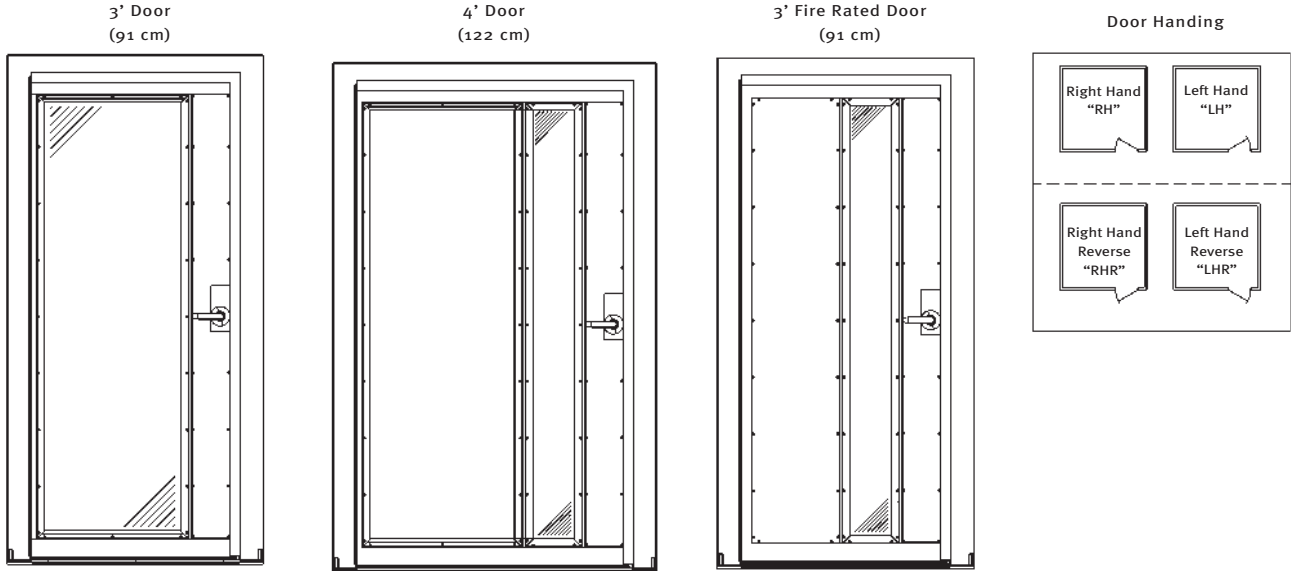
HVAC Direct connection

Acoustically isolated HVAC connections.

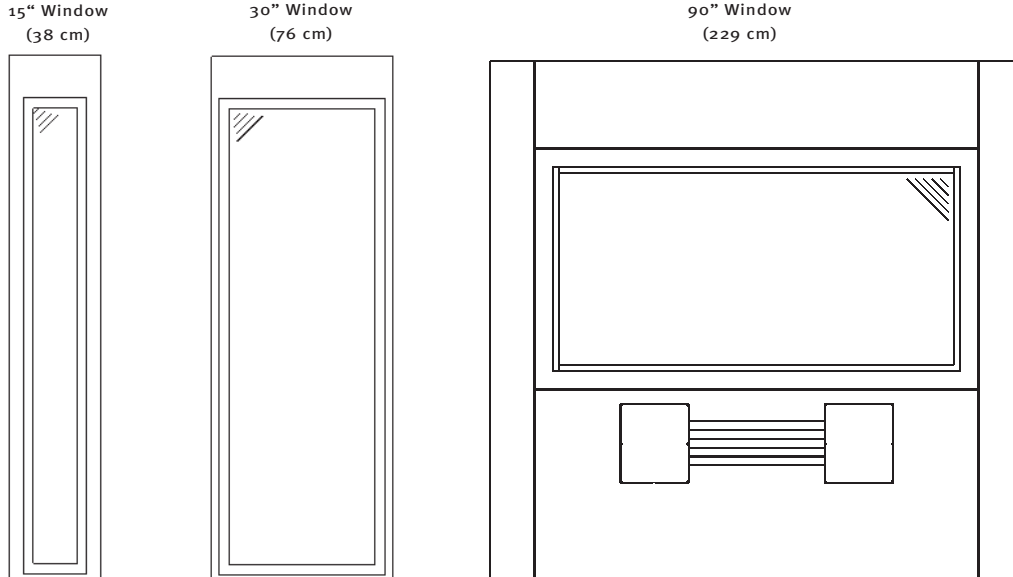
SOUND-ISOLATED PRACTICE ROOMS

Application Information

Doors



Windows

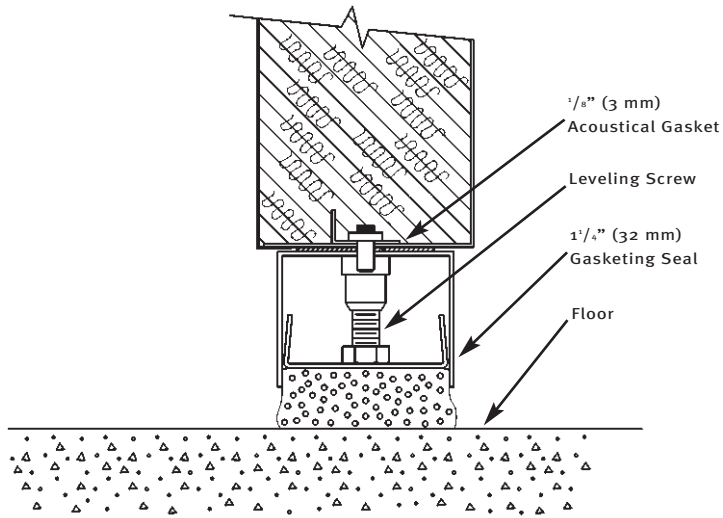


NOTE: Cable raceways are available in an offset or straight feed through for back-to-back installations.

SOUND-ISOLATED PRACTICE ROOMS

Application Information

Typical wall cross section of module on existing floor finished by others

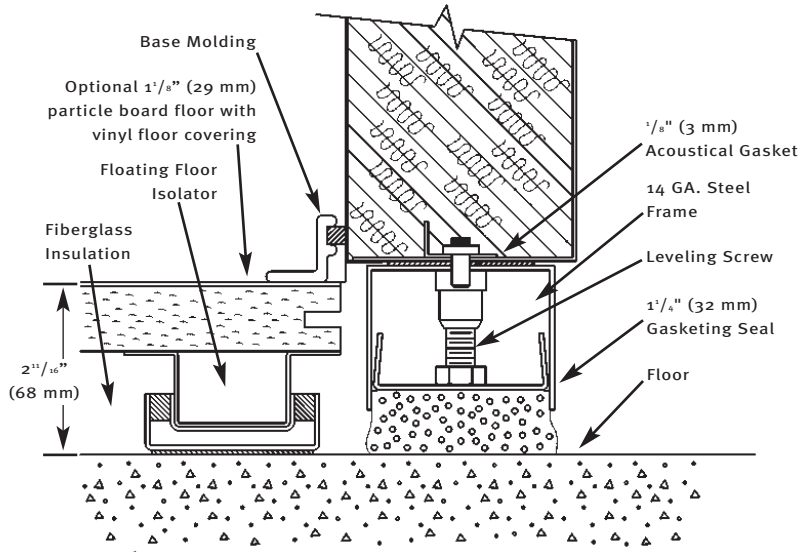


NOTE: Floor needs to be level within $3/4$ " (19 mm) over the area of the room.

SOUND-ISOLATED PRACTICE ROOMS

Application Information

Typical wall cross section of optional floating floor

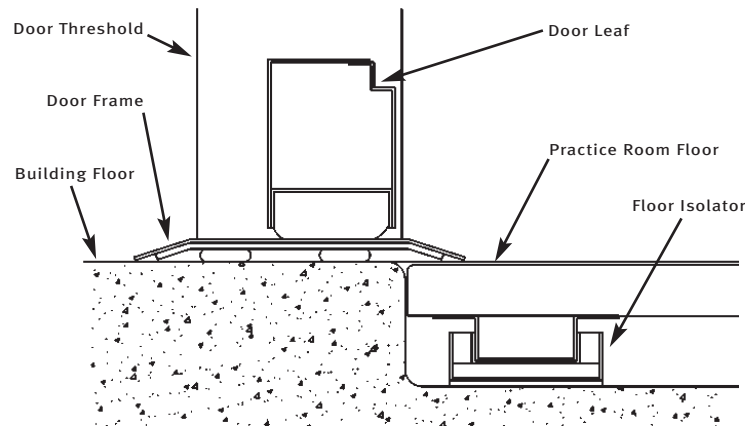


NOTE: If optional Wenger floor is required, a recessed subfloor is required to meet ADA requirements.

Notes

1. Wenger floors are recommended for installations where the host building floor may not provide adequate sound-isolation:
 - Host buildings concrete floor is less than 5" (127 mm) thick
 - Above grade installations
 - Low mass flooring systems
 - Applications desiring additional sound-reduction through the floor
2. Floor system consists of Armstrong Seagate (smoke) vinyl flooring over 1 1/8" (29 mm) particleboard subfloor floating on resilient insulators.
3. Sectional design uses both interlocking supports and mechanical locks to create a monolithic subfloor. A base molding and gasket system seals the floor to the rooms walls.
4. Fits standard rooms with RHR or LHR (outswing) doors only. LH or RH (inswing) doors can be used if Wenger floor is recessed into host building subfloor.
5. Floor is 2 3/4" (70 mm) thick creating a step up at the door threshold and a reduction of ceiling clearance of that value. If Wenger floor is recessed into host buildings subfloor, this situation is eliminated.

Typical wall cross section of recessed floor



NOTE: Optional Wenger recessed subfloor may be required to meet ADA requirements.

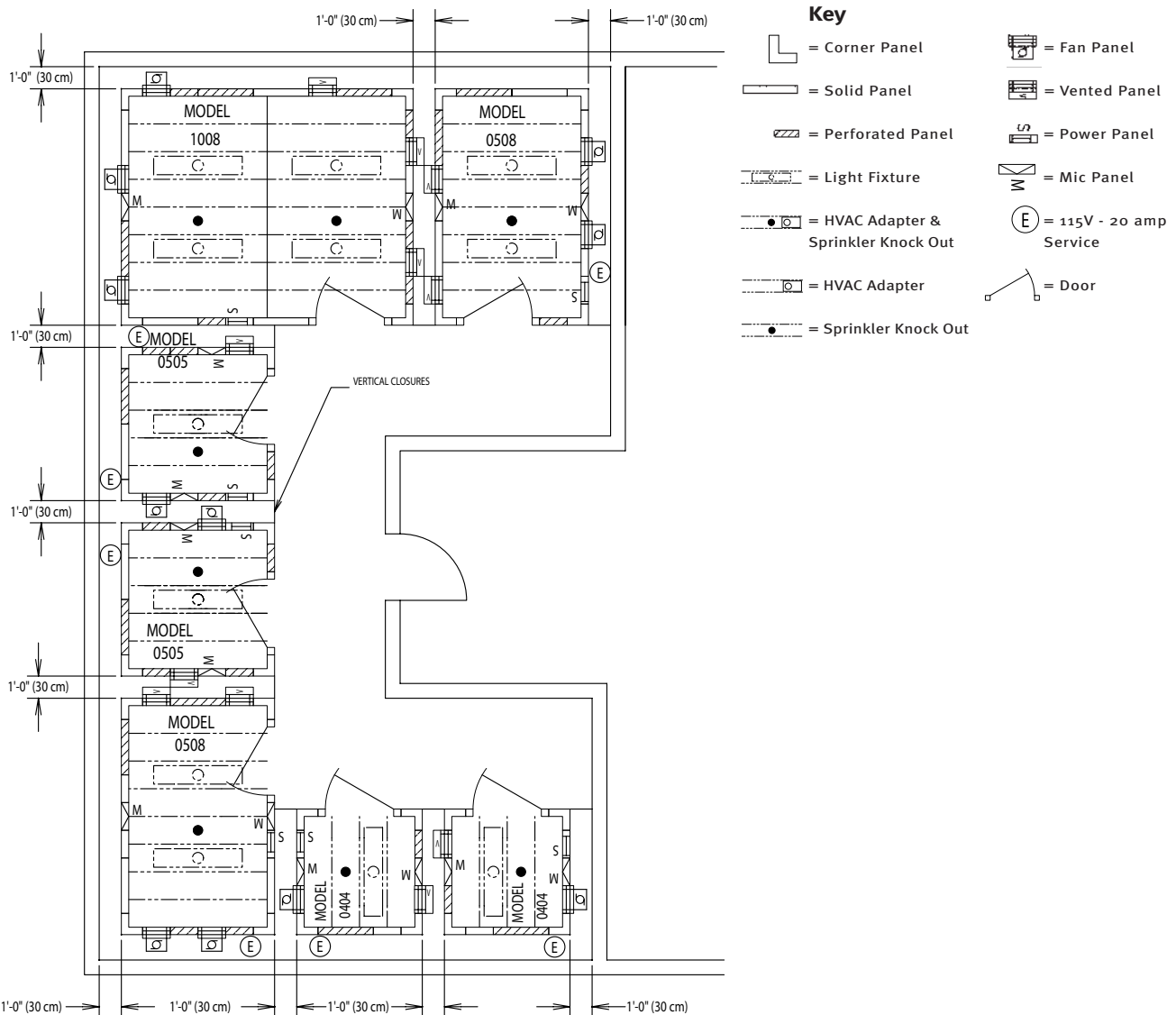
Contact Wenger for more information on optional floor applications.

SOUND-ISOLATED PRACTICE ROOMS

Typical Drawings

Practice Area Layout

- Wenger practice rooms can be configured in a number of sizes.
- Most musicians practice alone, so there should be a number of smaller practice rooms.
- There should also be a variety of practice rooms sized for pianos, small groups, and ensembles.
- The central hallway should be large enough to let musicians carrying instruments easily pass each other and also accommodate larger instruments like a piano or timpani.
- 1'-0" is required between rooms to accommodate ventilation systems.



Sample practice area layout.

SOUND-ISOLATED PRACTICE ROOMS

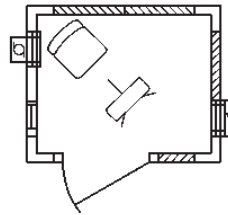
Typical Drawings

Practice Area Layout

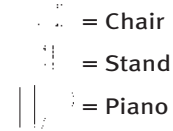
- Dimensions do not include fan and vent panels.

Individual Practice

Model 0504
Outside dimensions
6'11" x 5'8" (211 x 173 cm)

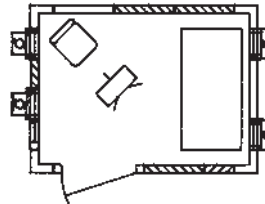


Key



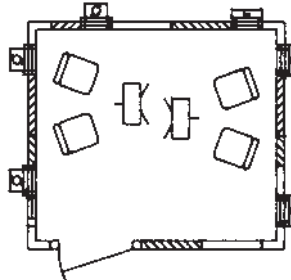
1-2 Students

Model 0507
Outside dimensions
6'11" x 9'5" (211 x 113 cm)



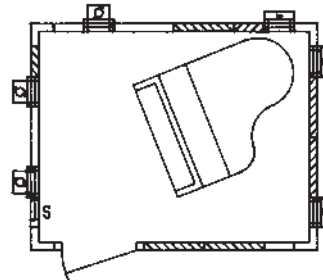
Upright Piano or 3-4 Students

Model 0708
Outside dimensions
9'5" x 10'8" (113 x 325 cm)



Grand Piano or 5-6 Students

Model 0709
Outside dimensions
9'5" x 11'11" (113 x 363 cm)



Grand Piano or 5-6 Students

Model 0710
Outside dimensions
9'5" x 13'2" (113 x 401 cm)

