

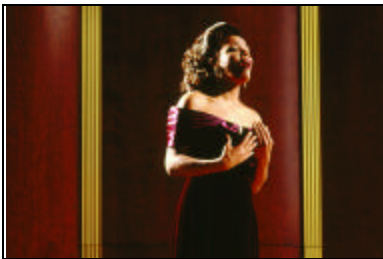


DIVA[®] ACOUSTICAL SHELL

FEATURES AND BENEFITS

Features

Benefits



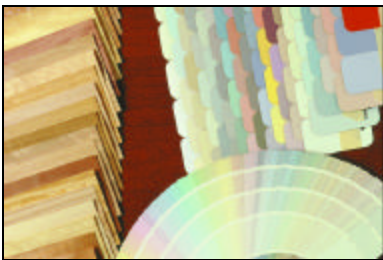
Complete Acoustical Enclosure

Superior acoustical environment for performances. Musicians hear broader, more balanced sound; conductors accurately hear whole ensemble; and audience receives full energy of performance.



Composite Panel Construction

Provides acoustically reflective surface with lightweight rigidity. Excellent sound reflection at all frequencies.



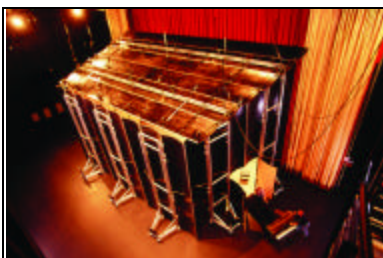
Wide Variety of Finish Options

Extensive selection of paint, wood veneer or laminate finishes. Custom appearance cost-effectively compliments auditorium aesthetics. Matching or accenting trim available.



All-Aluminum Frame

Provides lightweight strength and maneuverability. Attractive, clean design.

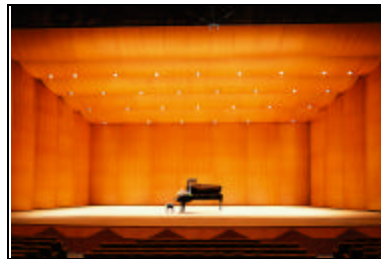


Convenient Doors

Access panels on side-by-side towers create a double door that accommodates a grand piano.

Features

Benefits



High End Aesthetics

Visually stunning background for any event: concerts, recitals, speeches, award ceremonies, etc.



Optional Integrated Lighting

Integrated into the ceiling panels to provide even light levels. Saves time in set-up. No need to rig and re-focus lights.



Air Transporter

Easily move towers on a cushion of air, saving crew time with fast set-ups (usually one hour or less) and take-downs. Protects stage floor from damage.



Nesting Towers

Offers compact storage with minimal footprint - in alcove, stage wing or backstage.



More Than 40 Years of Experience

Knowledge of customer needs building full-stage acoustical shells. Proven expertise in variety of applications. Excellent track record for after-sale service.

Wenger Corporation 555 Park Drive, P.O. Box 448, Owatonna, MN 55060-0448

United States Phone: 1-800-733-0393 / Fax: 1-507-455-4258 / Customer Service: 1-800-887-7145

Canada Phone: 1-800-268-0148 / Fax: 1-416-754-3996 Quebec Phone: 1-800-411-5600 / Fax: 1-416-754-3996

Worldwide Phone: 1-507-455-4100 / Fax: 1-507-444-0685

Web Site www.wengercorp.com